

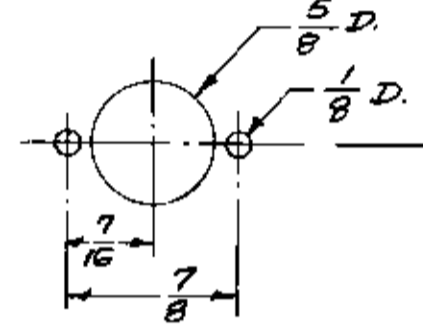
IF IT IS FOUND DESIRABLE TO CHANGE ANY TOLERANCE OR OTHER DETAIL, SPECIFIED ON THIS DRAWING NOTIFY THE PURCHASER PROMPTLY.

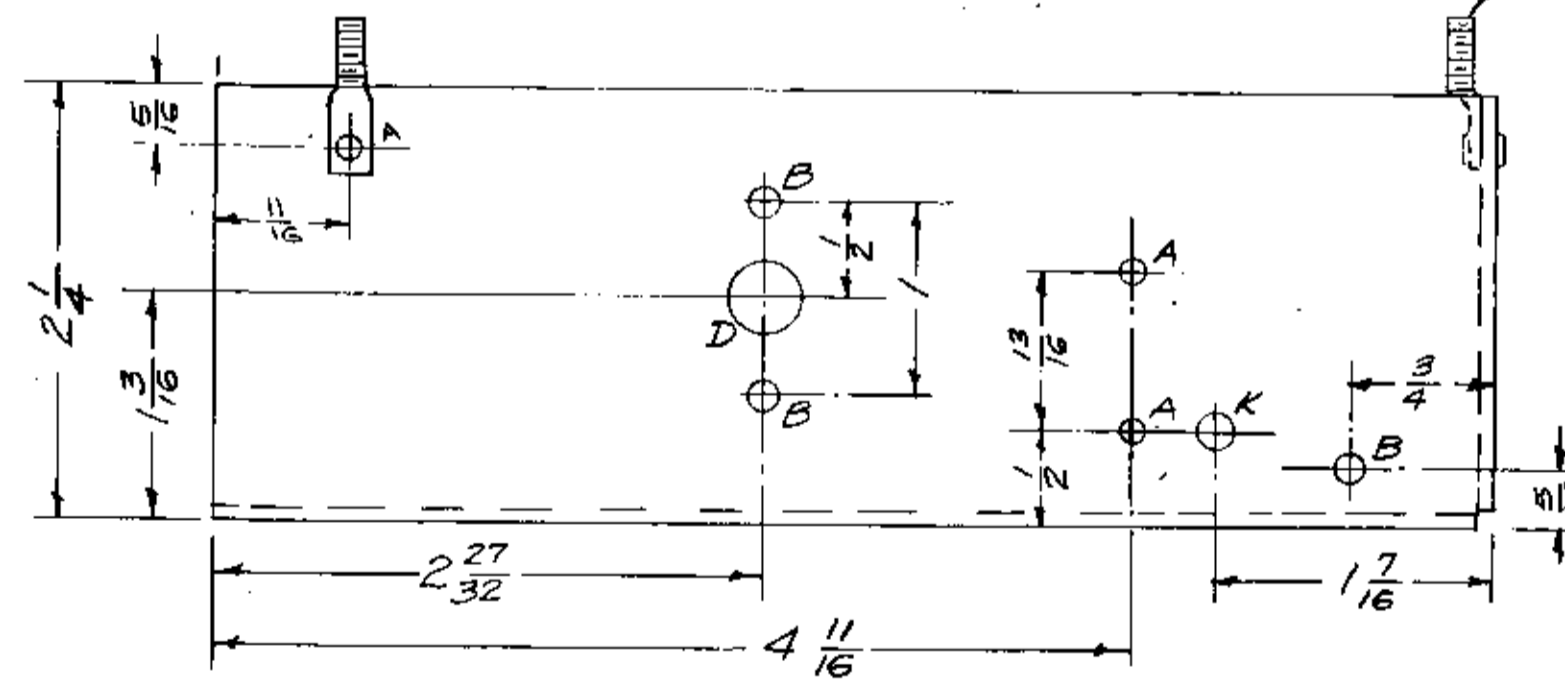
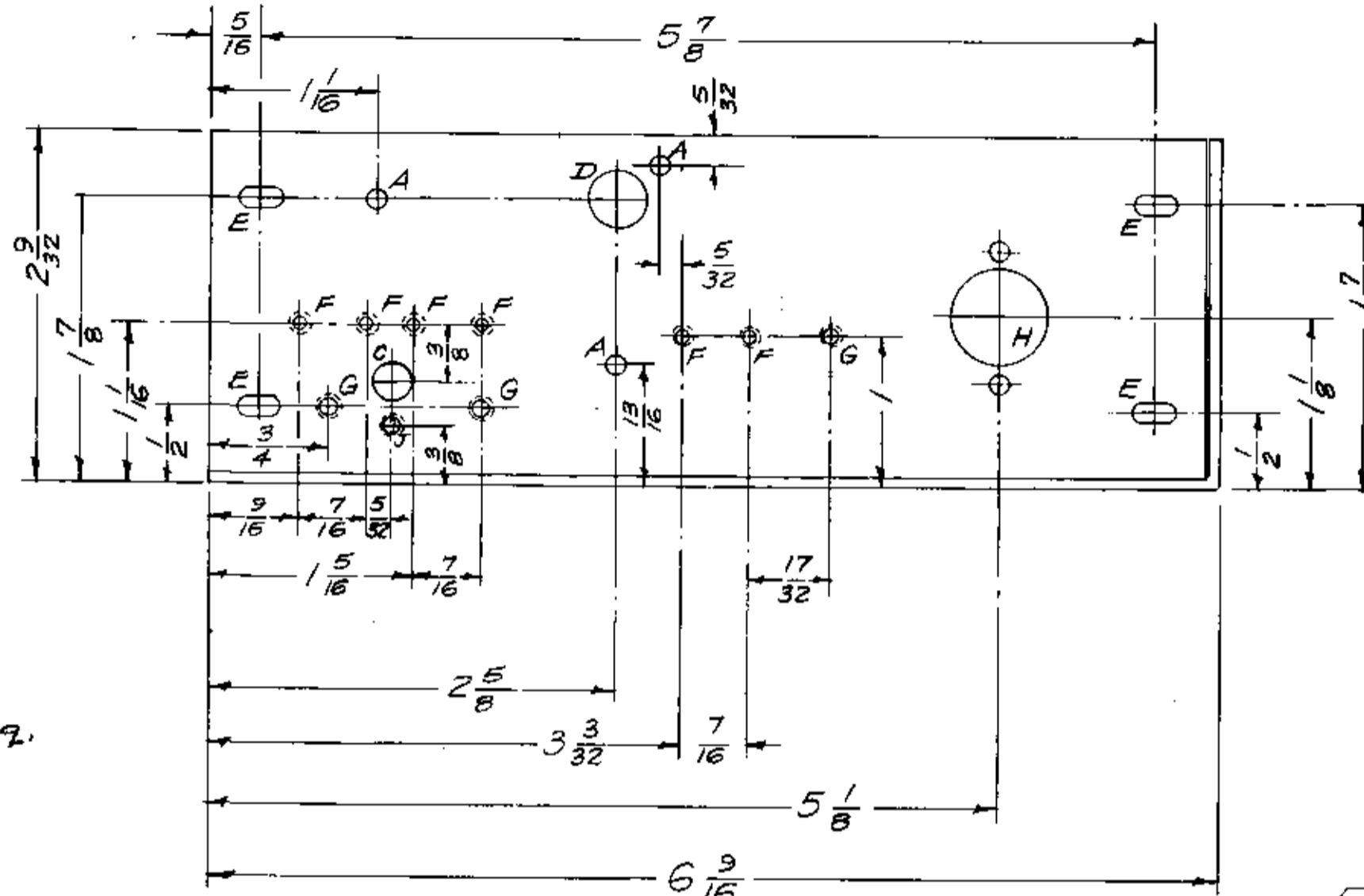
MAXIMUM ALLOWABLE TOLERANCES HAVE BEEN DETERMINED AND DEVIATIONS WILL BE CAUSE FOR REJECTION. REMOVE ALL BURRS AND SHARP EDGES

NOTICE TO PERSONS RECEIVING THIS DRAWING

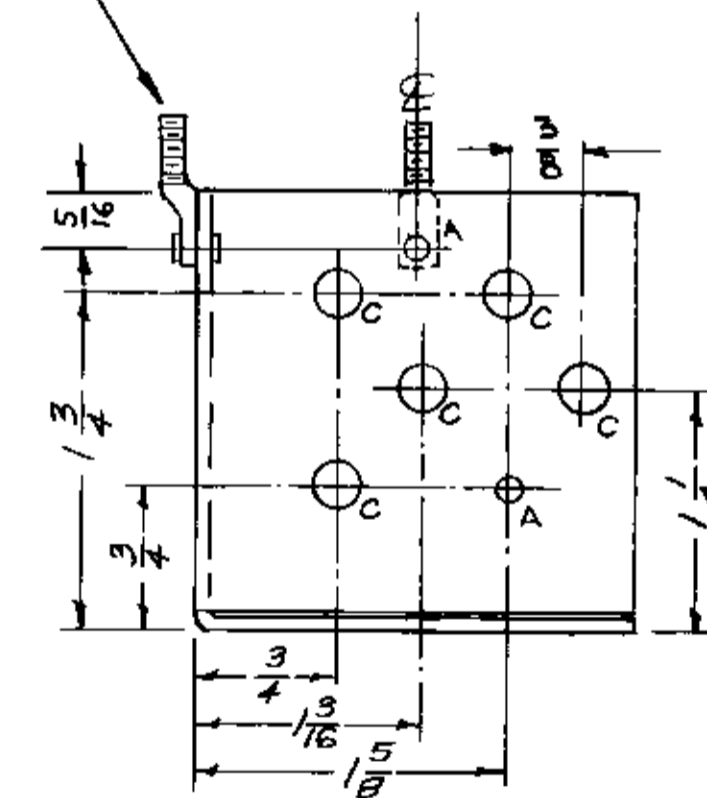
THE TECHNICAL MATERIEL CORPORATION claims proprietary right in the material disclosed hereon. This drawing is issued in confidence for engineering information only and may not be reproduced or used to manufacture anything shown hereon without permission from THE TECHNICAL MATERIEL CORPORATION to the user. This drawing is loaned for mutual assistance and is subject to recall at any time.

Property of:
THE TECHNICAL MATERIEL CORPORATION
MAMARONECK, NEW YORK

- A — $\frac{1}{8}$ (.125) D. — 8 Req.
- B — $\frac{5}{32}$ (.156) D. — 3 Req.
- C — $\frac{1}{4}$ (.250) D. — 6 Req.
- D — $\frac{3}{8}$ (.375) D. — 2 Req.
- E — $\frac{5}{32} \times \frac{5}{16}$ SLOTS — 4 Req.
- F — Drill & Tap for 4-40 Screw — 6 Req.
- G — Drill & Tap for 6-32 Screw — 3 Req.
- H —  — 1 Req.
- J — Drill & Tap for 2-56 Screw — 1 Req.
- K — $\frac{3}{16}$ (.187) D. — 1 Req.



Mount Spade Lug (SC-1074) and Eyelet (EY-100-2) in "A" Holes as shown. 2 Req.



MS-1087 F

ISSUE	ITEM	CHANGED FROM	DATE	EN. NO.	DRAFTS	CHECKER	ENG. APP.
F	1	1" SPADE LUG RELOCATED	11/16/59	1072	J.C.B.	J.C.B.	J.C.B.
E	1	5404-TRIDITE WAS 510 CAUSTIC D.P.	5/27/59	1001	J.C.B.	J.C.B.	J.C.B.
D	2	1 "A" Hole added	5/27/59	1071	J.C.B.	J.C.B.	J.C.B.
C	2	1 "C" Hole Relocated 2 Spade Lugs & Eyelets Added	3/19/59	3	J.C.B.	J.C.B.	J.C.B.
B	1	1 Two "A" Holes Added	1/22/59	2	J.C.B.	J.C.B.	J.C.B.
A	1	1 "J" Hole was 7/16 D. 1 "A" hole Relocated	2/11/59	1	J.C.B.	J.C.B.	J.C.B.

TOLERANCES		SCALE: FULL
ALL OTHERS	DEC. DIM. ± 1/64 FRAC. DIM. ± 1/64 ANGULAR DIM. ±	DRILL PUNCH, COMMERCIAL STOCK SIZES AND MANUFACTURERS TOLERANCES ARE NOT INCLUDED.

REQ. PER UNIT	MODEL	PROJECT NO.	ASBY. NO.	DATE
1	SBE-3	AX-204		11-30-59
1	SBE-2		A-1316	5-2-58
1	SBE-1-2			6-27-57

REQ.	ITEM	PART NO.	DESCRIPTION	SYMBOL
		.064 THK.	THE TECHNICAL MATERIEL CORP. MAMARONECK, NEW YORK	
		STOCK SIZE	CHASSIS, 1 1/2 R.F.	
		ALUMINUM		
		MATERIAL	WEIGHT PER PC.	
		5052-H32	SBE-1, 2	
		TYPE & TEMPER	166-27-57	
		HEAT TREAT. SPEC.	5404-YEL-IRIDITE	
		FINISH & SPEC. NO.		