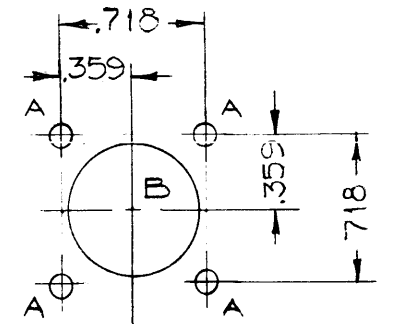


- A - 1/8 (.125) D. 8 REQ.
- B - 11/16 (.687) D. 2 REQ.
- C - 11/64 (.171) D. 4 REQ.
- D - 13/64 X 13/32 SLOTS 2 REQ.



DETAIL A-A
2 REQ.

NOTICE TO PERSONS RECEIVING THIS DRAWING

THE TECHNICAL MATERIEL CORPORATION claims proprietary right in the material disclosed hereon. This drawing is issued in confidence for engineering information only and may not be reproduced or used to manufacture anything shown hereon without permission from THE TECHNICAL MATERIEL CORPORATION to the user. This drawing is loaned for mutual assistance and is subject to recall at any time.

Property of:
THE TECHNICAL MATERIEL CORPORATION
MAMARONECK, NEW YORK

REF. LD-356

ISSUE	ITEM	CHANGED FROM	DATE	CH. NO.	DRAFTS	CHECKER	ENG. APP.
A	1	S-404 WAS S-101	12/14/59	1001	AB		EMN
TOLERANCES		SCALE: <i>(handwritten symbol)</i>					
DEC. DIM. ±		MAXIMUM ALLOWABLE TOLERANCES HAVE BEEN DETERMINED AND ANY DEVIATIONS WILL BE CAUSE FOR REJECTION.					
FRAC. DIM. ± 1/64		REMOVE ALL BURRS AND SHARP EDGES					
ANGULAR DIM. ±							

REQ. PER UNIT	MODEL	PROJECT NO.	ASS'Y. NO.	DATE
1	A-1279			6-28-57
USED ON				

REQ. ITEM	PART NO.	DESCRIPTION	SYMBOL
	.064	THE TECHNICAL MATERIEL CORP.	
	STOCK SIZE	MAMARONECK, NEW YORK	
	ALUMINUM	CHASSIS, CONNECTOR	
	MATERIAL	A-1279	
5652-H32		<i>(handwritten initials)</i>	<i>(handwritten initials)</i>
		6.28.57	<i>(handwritten initials)</i>
		DRAWN	CHECKED
		FINAL APPROVAL	
	S-404 YELLOW IRIDITE		MS-1085 A
	FINISH & SPEC. NO.	ELEC. DES. APP.	MECH. DES. APP.