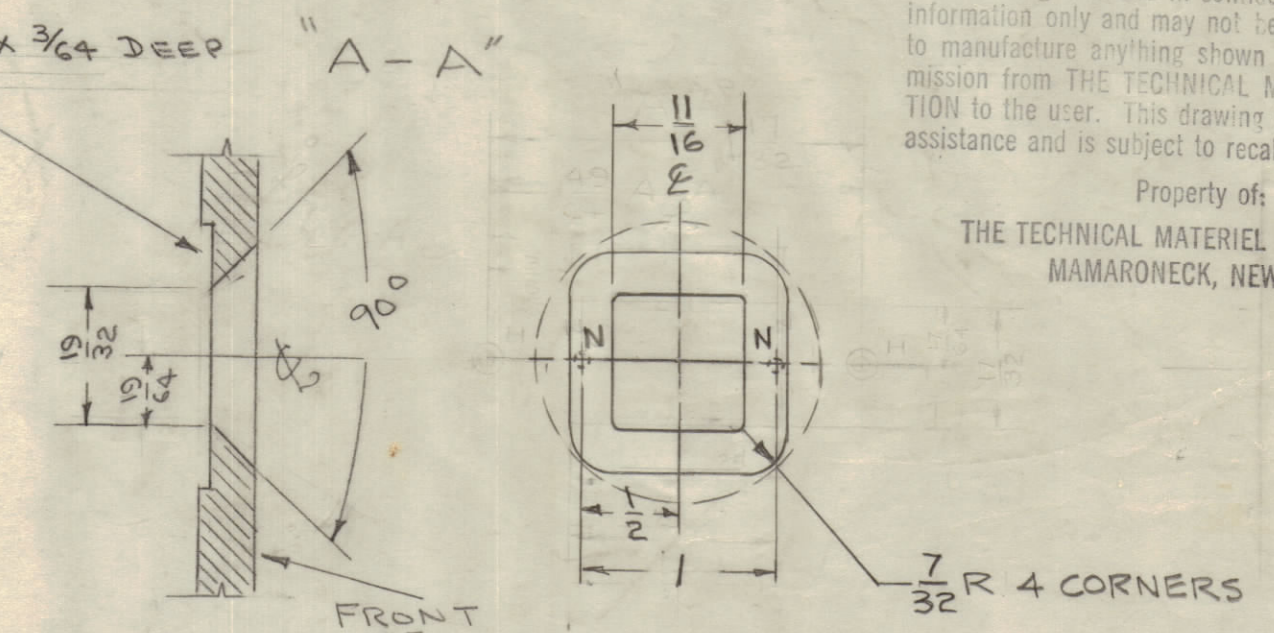
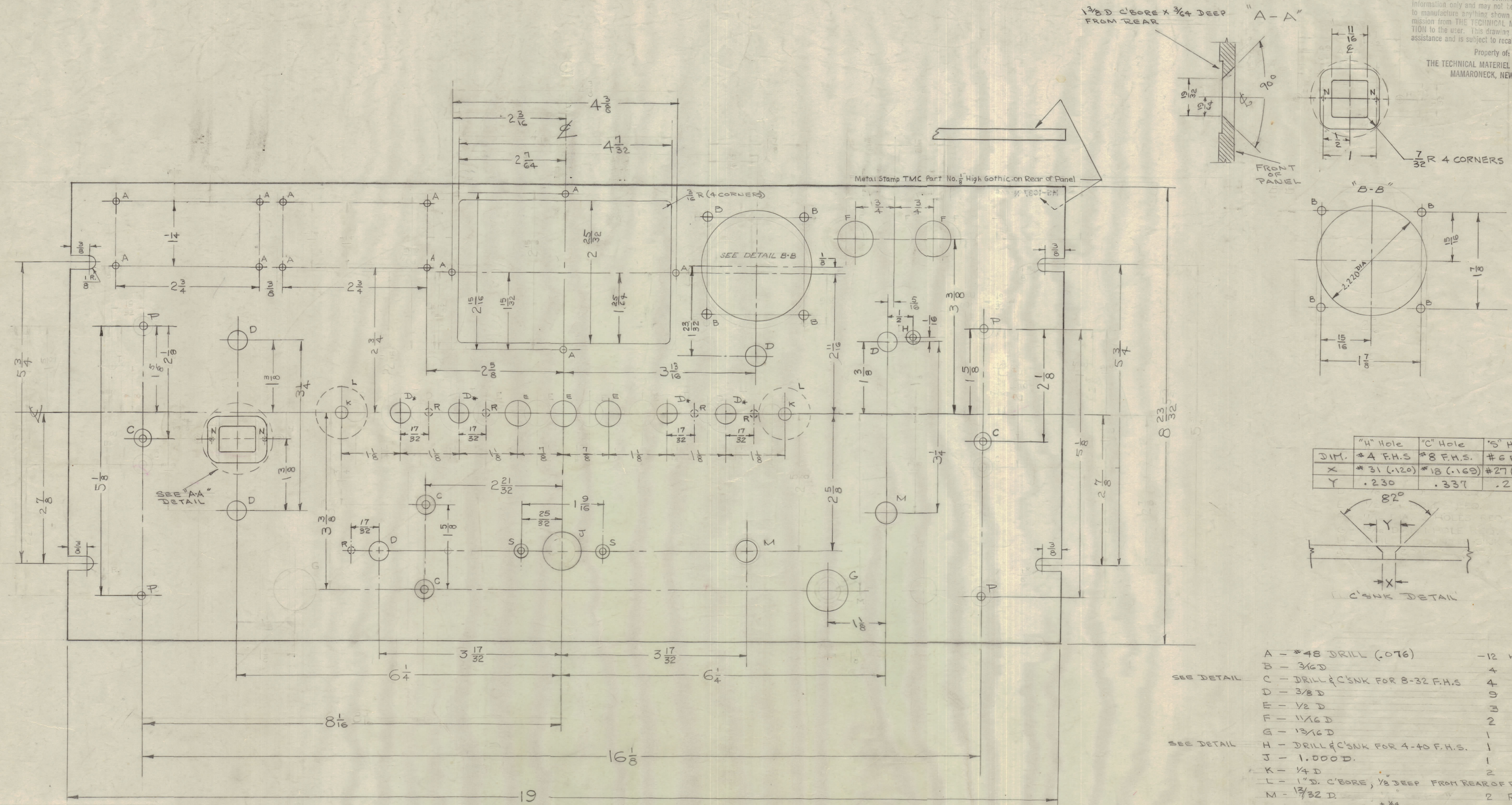
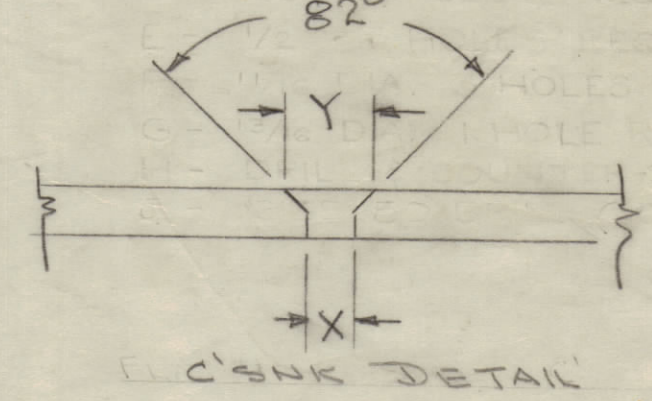


IF IT IS FOUND DESIRABLE TO CHANGE ANY TOLERANCE OR OTHER DETAIL SPECIFIED ON THIS DRAWING NOTIFY THE PURCHASER PROMPTLY.
 MAXIMUM ALLOWABLE TOLERANCES HAVE BEEN DETERMINED AND DEVIATIONS WILL BE CAUSE FOR REJECTION. REMOVE ALL BURRS AND SHARP EDGES

NOTICE TO PERSONS RECEIVING THIS DRAWING
 THE TECHNICAL MATERIEL CORPORATION claims proprietary right in the material disclosed herein. This drawing is issued in confidence for engineering information only and may not be reproduced or used to manufacture anything shown hereon without permission from THE TECHNICAL MATERIEL CORPORATION to the user. This drawing is loaned for mutual assistance and is subject to recall at any time.
 Property of:
 THE TECHNICAL MATERIEL CORPORATION
 MAMARONECK, NEW YORK



	"H" HOLE	"C" HOLE	"S" HOLE
DIM.	#4 F.H.S	#8 F.H.S	#6 F.H.S
X	#31 (.120)	#18 (.160)	#27 (.144)
Y	.230	.337	.284



- A - #48 DRILL (.076) - 12 HOLES
- B - 3/16 D - 4 "
- SEE DETAIL C - DRILL & C'SNK FOR 8-32 F.H.S - 4 "
- D - 3/8 D - 9 "
- E - 1/2 D - 3 "
- F - 1 1/16 D - 2 "
- SEE DETAIL G - 1 3/16 D - 1 "
- H - DRILL & C'SNK FOR 4-40 F.H.S. - 1 "
- J - 1.000 D. - 1 "
- K - 1/4 D - 2 "
- L - 1" D. C'BORE, 1/8 DEEP FROM REAR OF PANEL 2 REQ.
- M - 1 3/32 D - 2 REQ.
- N - #6 SS DRILL X 1/4" + .003 FROM REAR AFTER C'BORE 2 REQ.
- P - SEE CHART - 4 REQ.
- R - 9/64 D. X 1/8 DEEP FROM REAR - 5 REQ.
- SEE DETAIL - S - DRILL & C'SNK FOR 6-32 F.H.S - 2 REQ.

TMC NO.	"P" HOLE	USE
M5-1037-1	1/4 D. AS SHOWN Dr. & C'snk from Front	RACK MOUNTING
M5-1037-2	82° +.390 ± (10-32) +.196 (#9)	CABINET MOUNTING

NOTE: FINISH
 S-404 YEL. IRIDITE
 S-114 - ZINC CHROMATE PRIMER
 S-115 - SMOOTH GREY ENAMEL
 OR
 PRIME & PAINT ACCORDING TO CUSTOMER'S SPECIFICATIONS

ISSUE	ITEM	CHANGED FROM	DATE	EN. NO.	DRAFTS	CHECKER	ENG. APP.
R	1	DELE. "T" HOLES (3/64) 2 EA	1-24-66	15580	HLA		
P	1	DETAIL B-B: 2.220 DIA. WAS 2.316	2-16-65	13489	32		
N	0	DETAIL A-A CLARIFIED	5-21-63	30022			
	1	PART NO. STAMPING NOTE CORRECTED					

TOLERANCES FROM
 DEC. DIM. ± .015
 FRAC. DIM. ± 1/64
 ANGULAR DIM. ±
 DRILL PUNCH, COMMERCIAL STOCK SIZES AND MANUFACTURERS TOLERANCES ARE NOT INCLUDED.

REQ. PER UNIT	MODEL	PROJECT NO.	ASSY. NO.	DATE
1	SBE-3			AD-101
1	SBE-2			AD-1516
1	SBE-1	300		5-2-58
				4-15-57

REQ. ITEM	PART NO.	DESCRIPTION	SYMBOL
	3/16 THK	THE TECHNICAL MATERIEL CORP. MAMARONECK, NEW YORK	
	ALUMINUM	FRONT PANEL	
	2024-T3		
	TYPE & TEMPER		
	HEAT TREAT. SPEC.		
	FINISH & SPEC. NO.		

M5-1037 R