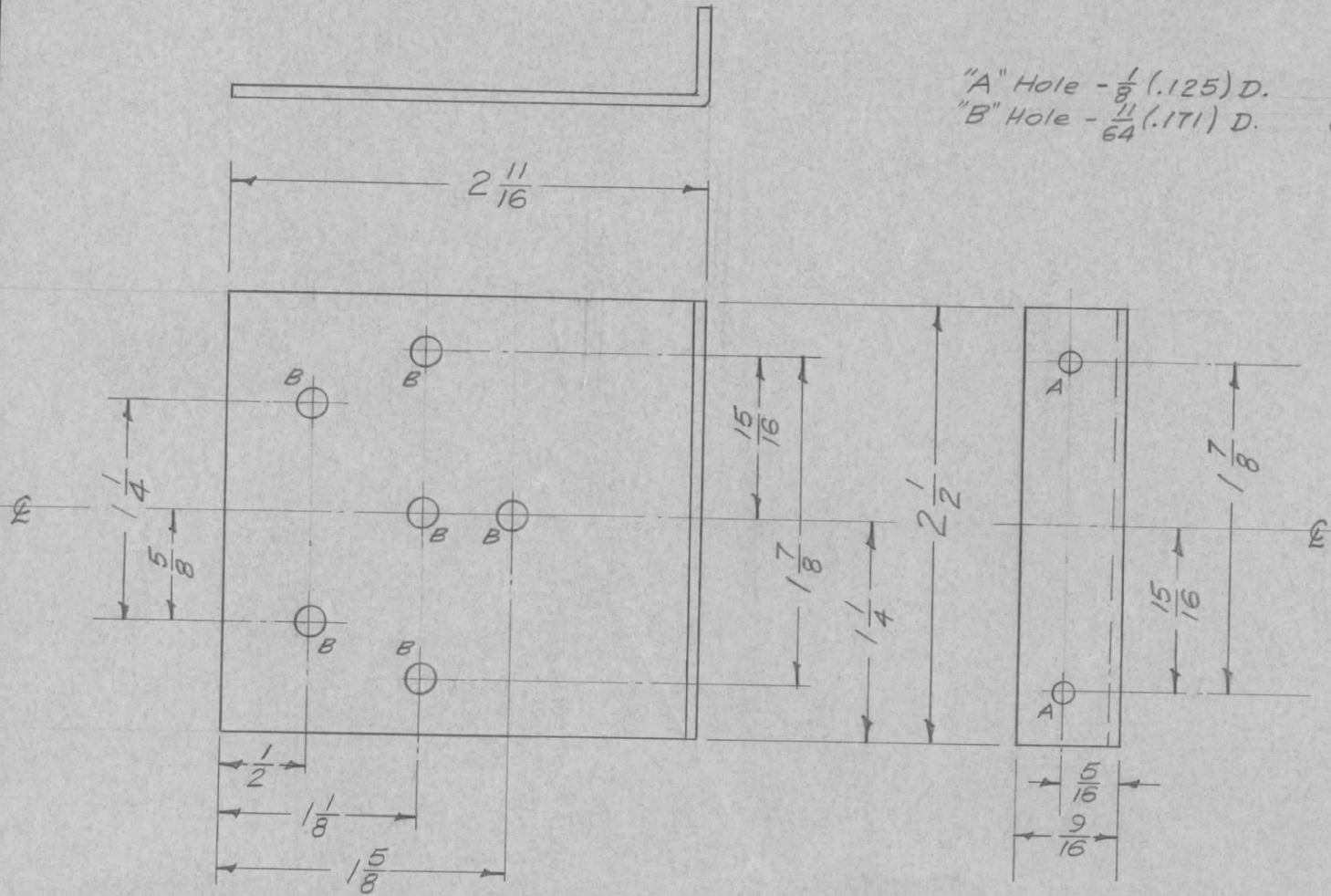


REQ. PER UNIT	USED ON			MS-1036	A
	MODEL	ASS'Y. NO.	DATE		
1	FX-153	A-140B	3-27-57		

"A" Hole - $\frac{1}{8}$ (.125) D. 2 Req.
 "B" Hole - $\frac{1}{64}$ (.0156) D. 6 Req.



REQ.	ITEM	PART NO.	DESCRIPTION				SYMBOL
		.064 THK.	THE TECHNICAL MATERIEL CORP.				
		STOCK SIZE	MAMARONECK, NEW YORK				
A	1	5404-IRIDITE WAS S101-CAUSTIC DIP	12-B 59	1001	P	EMN	BRACKET, FILTER
ISSUE	ITEM	CHANGED FROM	DATE	CH. NO.	DRAFTS	CHECKER	ENG. APP.
TOLERANCES			SCALE: #				
DEC. DIM. \pm			MAXIMUM ALLOWABLE TOLERANCES HAVE BEEN DETERMINED AND ANY DEVIATIONS WILL BE CAUSE FOR REJECTION. REMOVE ALL BURRS AND SHARP EDGES				
FRAC. DIM. $\pm \frac{1}{64}$							
ANGULAR DIM. \pm							
5052-H32		#	43-27-57	Jade	A. J. J.		
TYPE & TEMPER		HEAT TREAT. SPEC.	DRAWN	CHECKED	FINAL APPROVAL		
S404 IRIDITE		PLX			MS-1036 A		
FINISH & SPEC. NO.		ELEC. DES. APP.	MECH. DES. APP.				