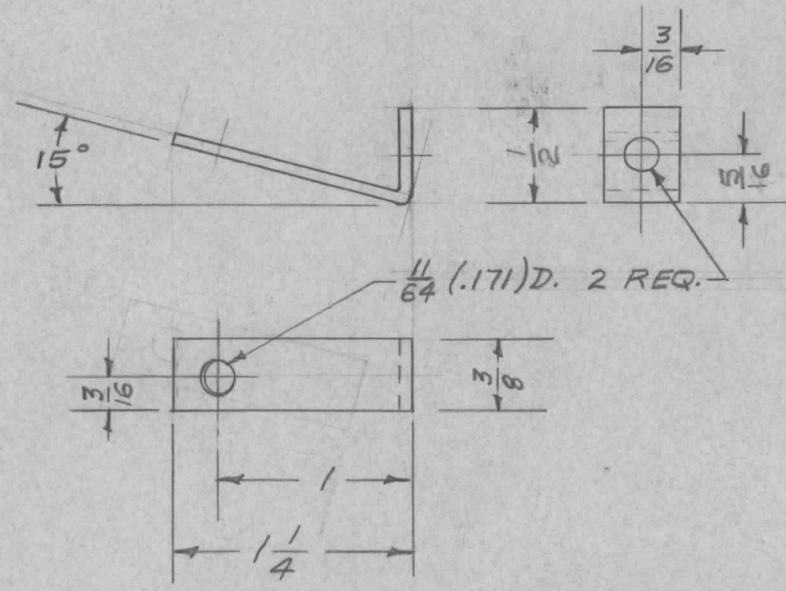


REQ. PER UNIT	USED ON		
	MODEL	ASS'Y. NO.	DATE
3		A-1389	
3	MSR-1	A-1390	3-5-57
2		A-1392	
8	MSR-3		6-24-58

MS-1027 C



UNLESS OTHERWISE SPECIFIED
DIMENSIONS ARE IN INCHES AND INCLUDE
CHEMICALLY APPLIED OR PLATED FINISHES

DECIMALS	TOLERANCES	FRACTIONS
.X ± .05		± 1/64
.XX ± .01		ANGLES
.XXX ± .005		± 0° 30'

CUT HERE
GUARANTEED
2-56

ISSUE	ITEM	CHANGED FROM	DATE	CH. NO.	DRAFTS	CHECKER	ENG. APP.	REQ. ITEM	PART NO.	DESCRIPTION	SYMBOL	
C	1	S404-IRIDITE WAS S101 CAUSTIC DIP	12-8 59	1001	P		EMN		.064 THK.	THE TECHNICAL MATERIEL CORP. MAMARONECK, NEW YORK BRACKET, ANGLE, TERMINAL BOARD		
B	1	5/16 WAS 1/4 1/2 WAS 3/8	8/27/58	2	H.R.	P.T.K.	all		STOCK SIZE			
A	1	3/8 BASE WAS 1/2	4/15/57	1	16	H.H.S.	AMP		ALUMINUM			
									MATERIAL			
TOLERANCES			SCALE:					525-H32	— H —	62-19-57	H.S.	all
DEC. DIM. ± FRAC. DIM. ± ANGULAR DIM. ±			MAXIMUM ALLOWABLE TOLERANCES HAVE BEEN DETERMINED AND ANY DEVIATIONS WILL BE CAUSE FOR REJECTION. REMOVE ALL BURRS AND SHARP EDGES					TYPE & TEMPER HEAT TREAT. SPEC.		DRAWN	CHECKED	FINAL APPROVAL
								S404 IRIDITE				MS-1027 C
								FINISH & SPEC. NO.		ELEC. DES. APP.	MECH. DES. APP.	