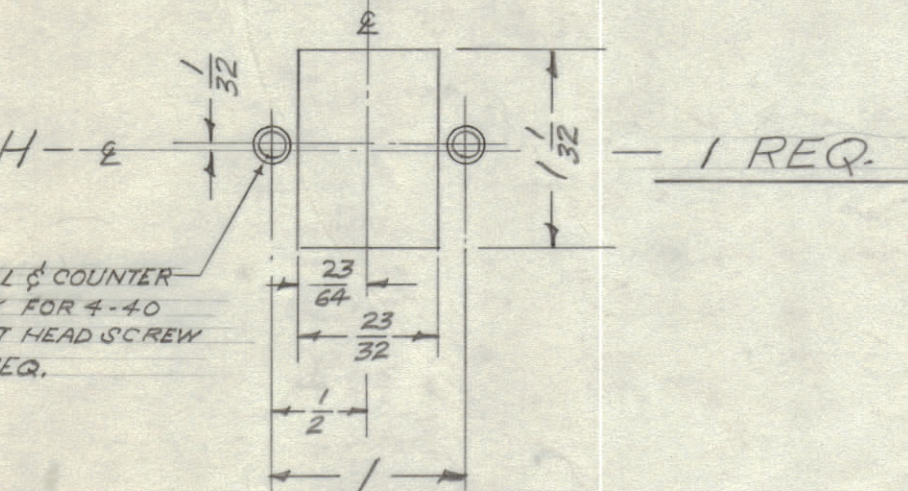
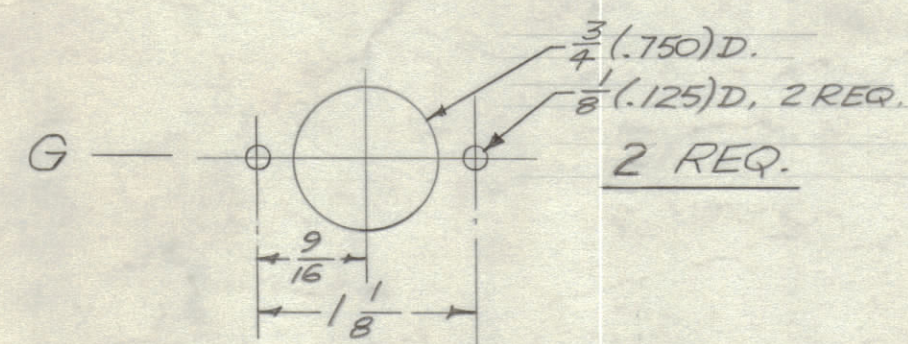
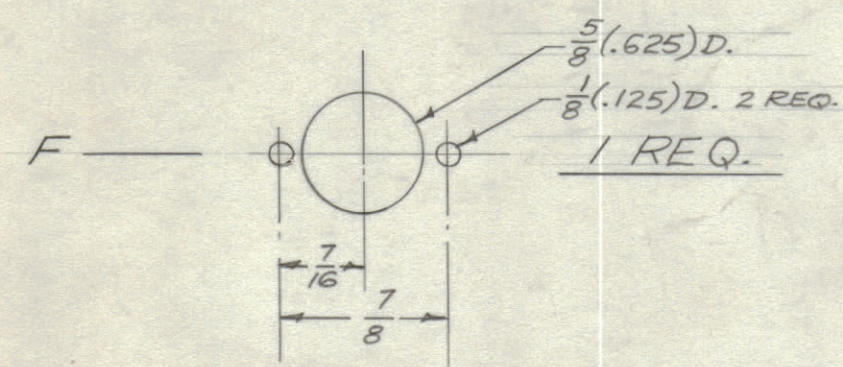
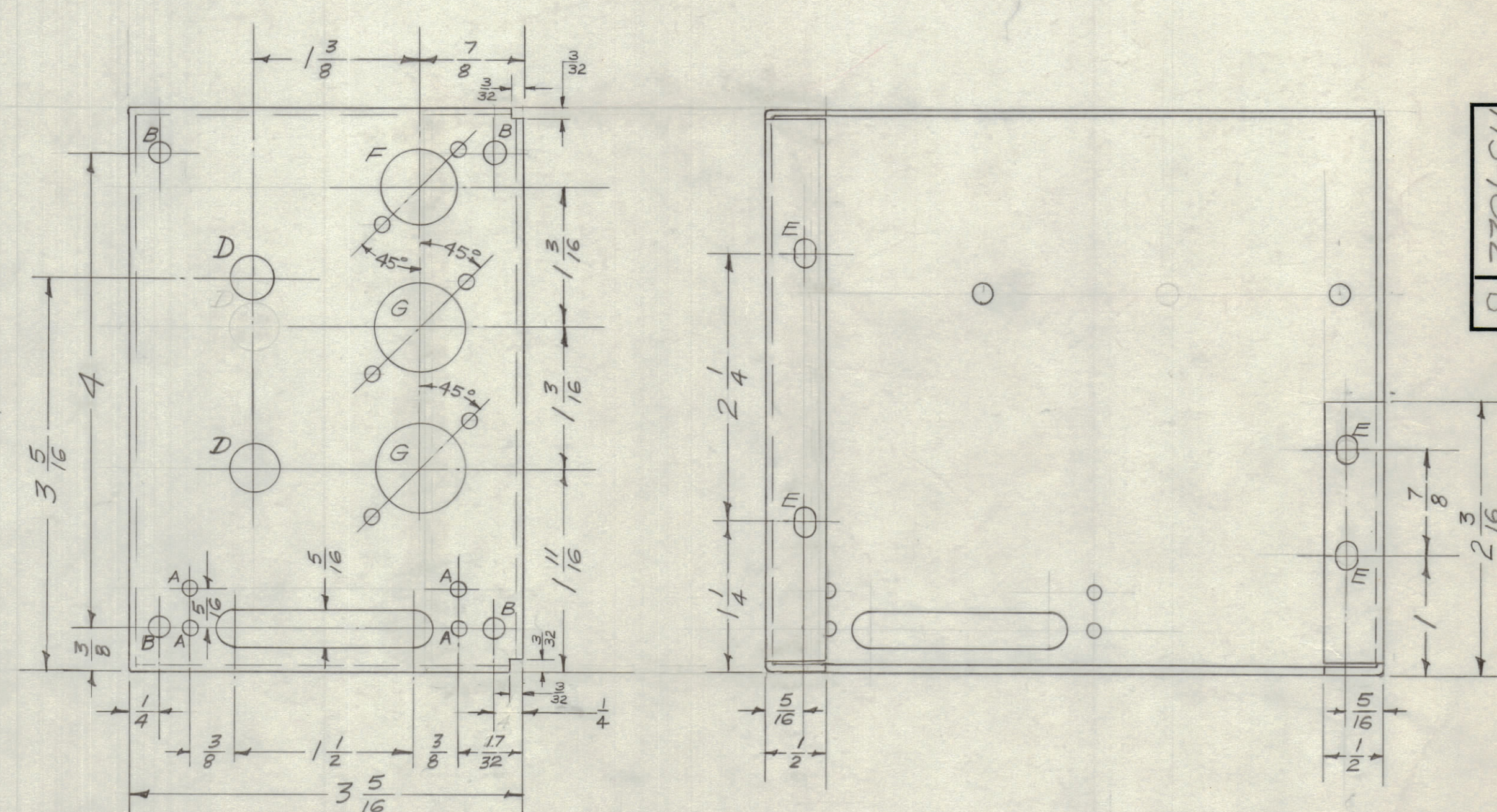
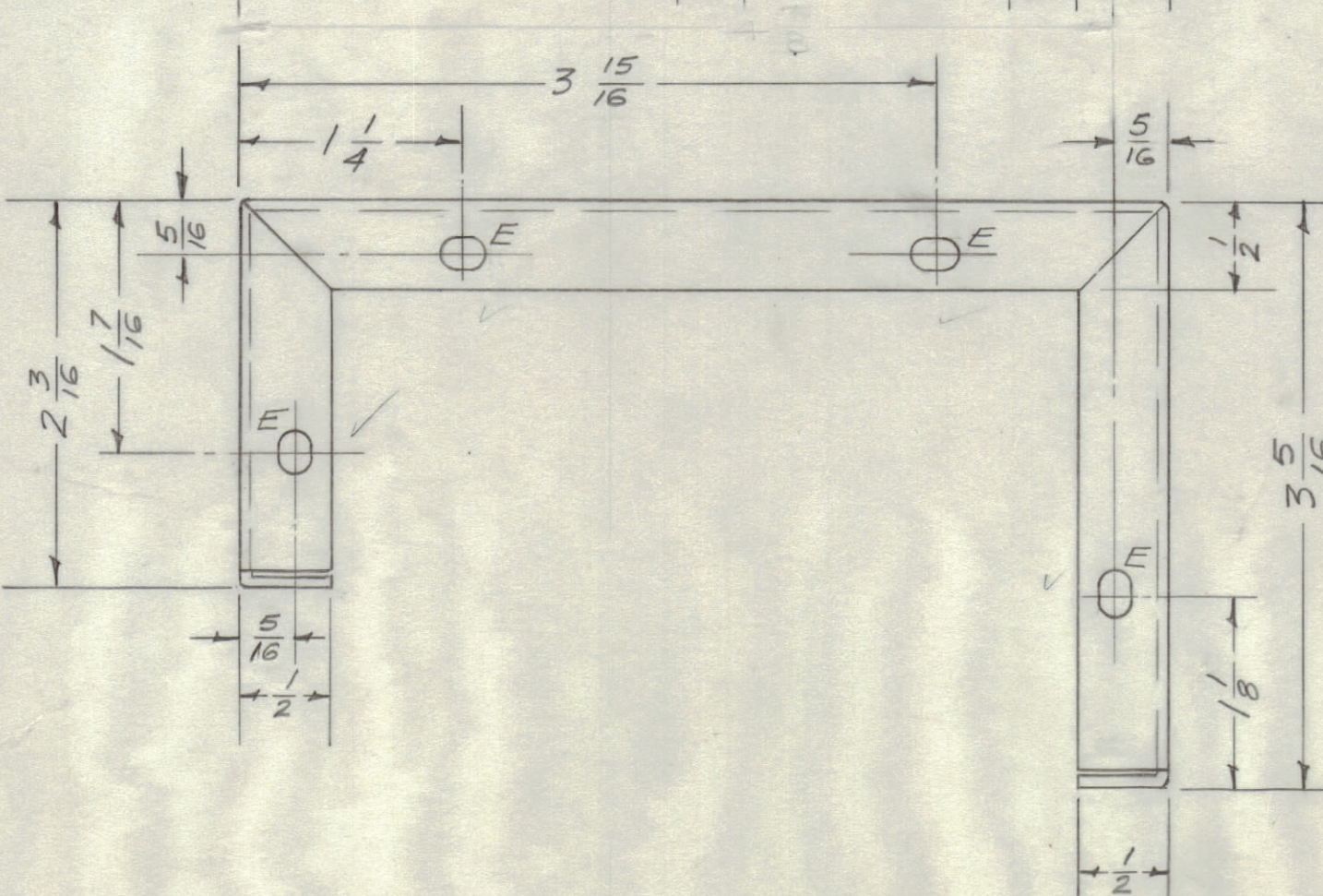
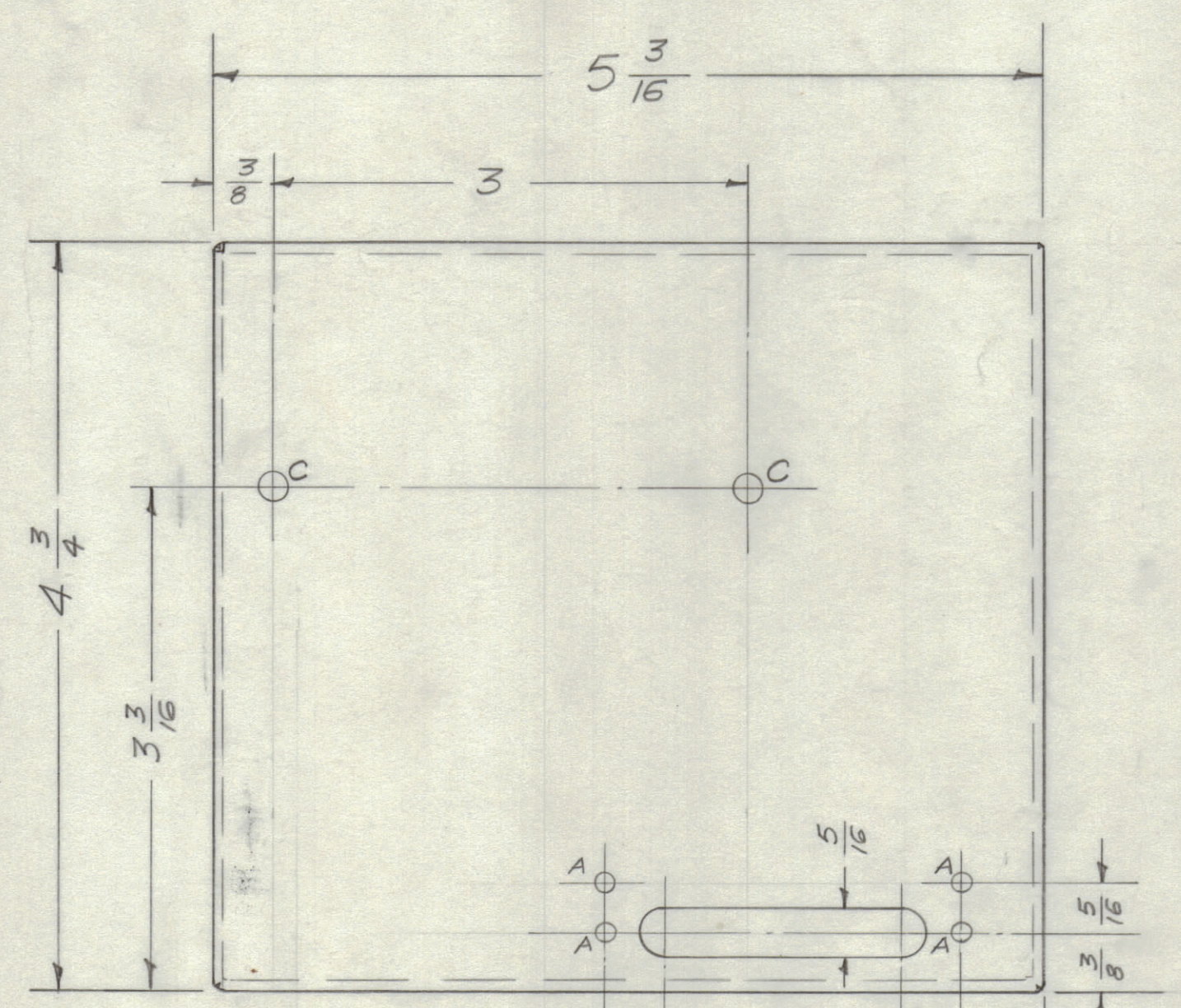
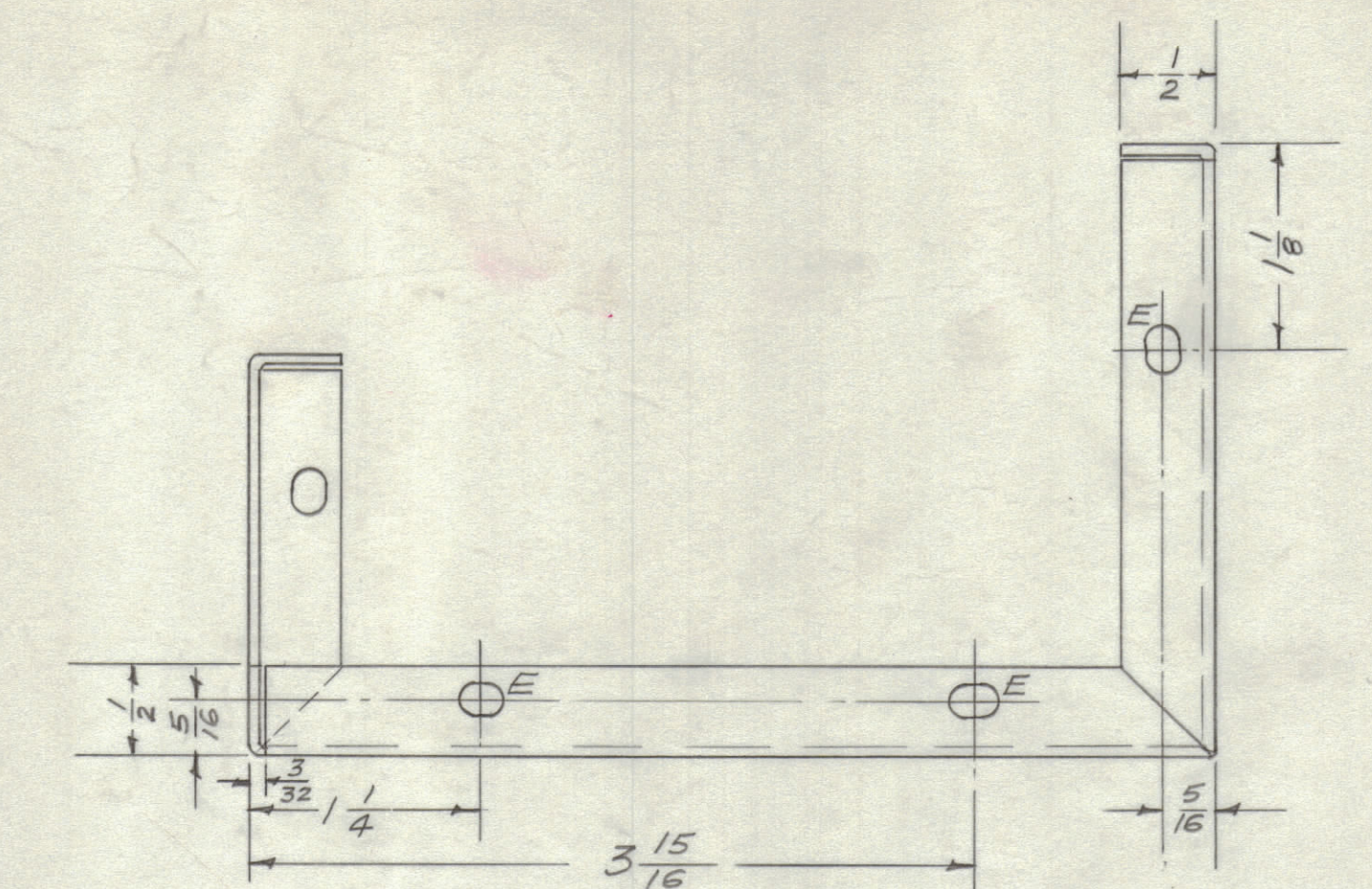
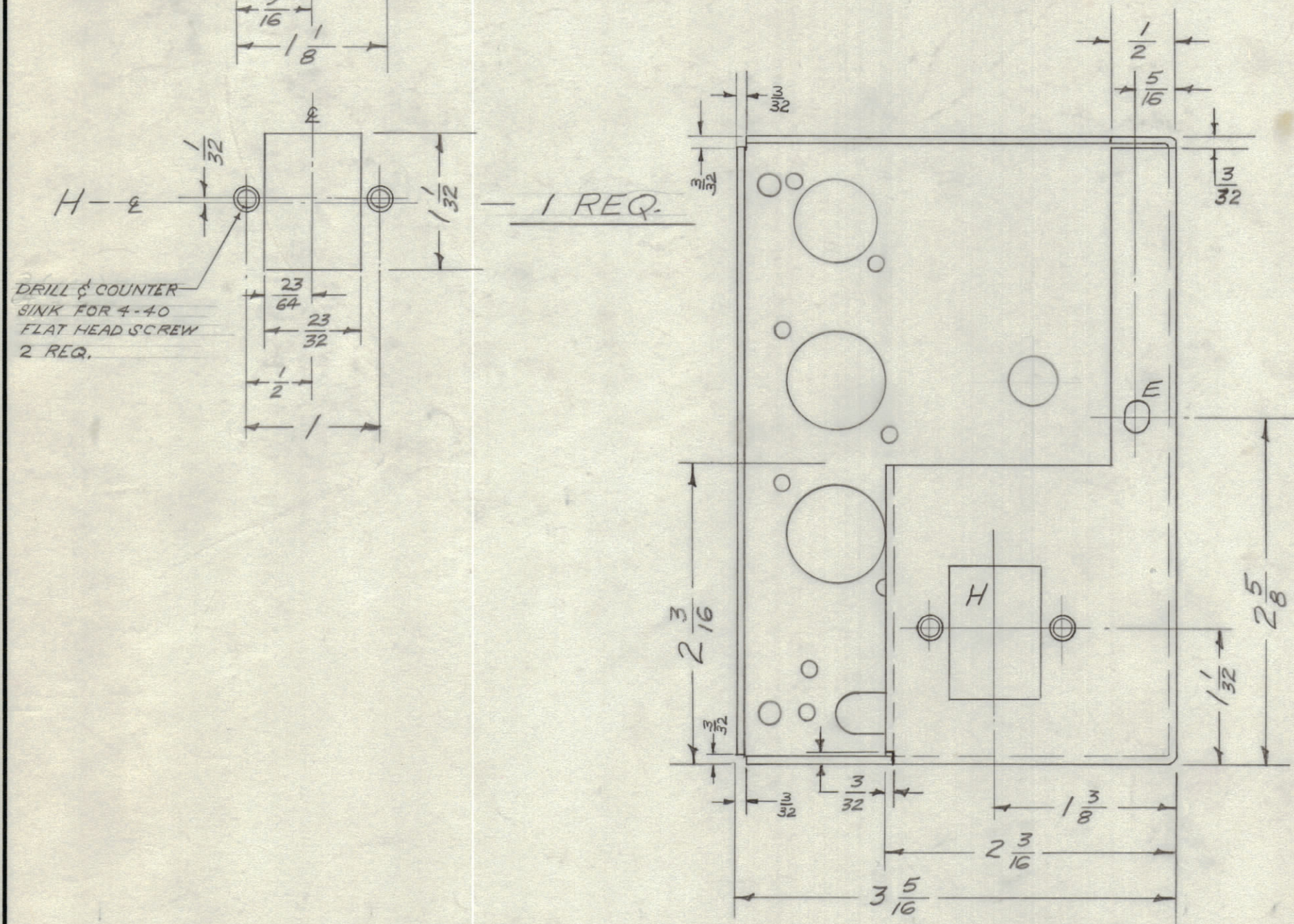


IF IT IS FOUND DESIRABLE TO CHANGE ANY TOLERANCE OR OTHER DETAIL SPECIFIED ON THIS DRAWING NOTIFY THE PURCHASER PROMPTLY.
 MAXIMUM ALLOWABLE TOLERANCES HAVE BEEN DETERMINED AND DEVIATIONS WILL BE CAUSE FOR REJECTION. REMOVE ALL BURRS AND SHARP EDGES.

- A - $\frac{1}{8}$ (.125) D. 8 REQ.
- B - $\frac{1}{64}$ (.0156) D. 4 REQ.
- C - $\frac{3}{16}$ (.1875) D. 2 REQ.
- D - $\frac{13}{32}$ (.4062) D. 2 REQ.
- E - $\frac{3}{16} \times \frac{1}{4}$ SLOT. 12 REQ.



DRILL & COUNTER SINK FOR #40 FLAT HEAD SCREW 2 REQ.



NOTICE TO PERSONS RECEIVING THIS DRAWING
 THE TECHNICAL MATERIEL CORPORATION claims proprietary right in the material disclosed herein. This drawing is issued in confidence for engineering information only and may not be re-produced or used to manufacture anything shown herein without permission from THE TECHNICAL MATERIEL CORPORATION to the user. This drawing is loaned for mutual assistance and is subject to recall at any time.
 Property of:
 THE TECHNICAL MATERIEL CORPORATION
 MAMARONECK, NEW YORK

BLANK SIZE 11 5/16 x 5 9/16

REV	DESCRIPTION	DATE	BY	CHECKED	ENG. APP.
B	S-404 YEL TRIDITE WAS S-101 CAUSTIC DIP	12/9/54	1001	AG	EMN
3	3/32 Notches added				
A	17/32 WAS 27/32				
1	"H" HOLES COUNTER SUNK	2-7-51		EC	6

ALL DIMENSIONS DEC. DIM. ± .001
 FRACTIONAL DIM. ± .001
 ANGULAR DIM. ± .001

DRILL PUNCH, COMMERCIAL STOCK SIZES AND MANUFACTURERS TOLERANCES ARE NOT INCLUDED.

REQ. PER UNIT	ITEM	MODEL	PROJECT NO.	ASS'Y. NO.	DATE	DESCRIPTION	SYMBOL
1	TTU	638			1-18-57	THE TECHNICAL MATERIEL CORP. MAMARONECK, NEW YORK MAIN CHASSIS, Model TTU	MS-1022 B
						5052-H32	
						HEAT TREAT. SPEC.	
						FINISH & SPEC. NO.	

MS-1022 B

A2

A2

A2