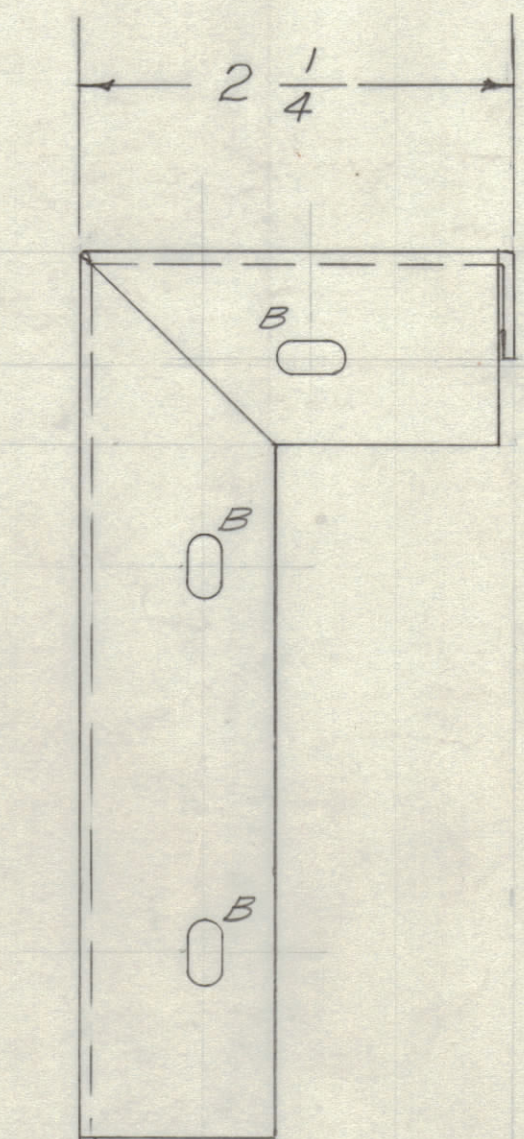
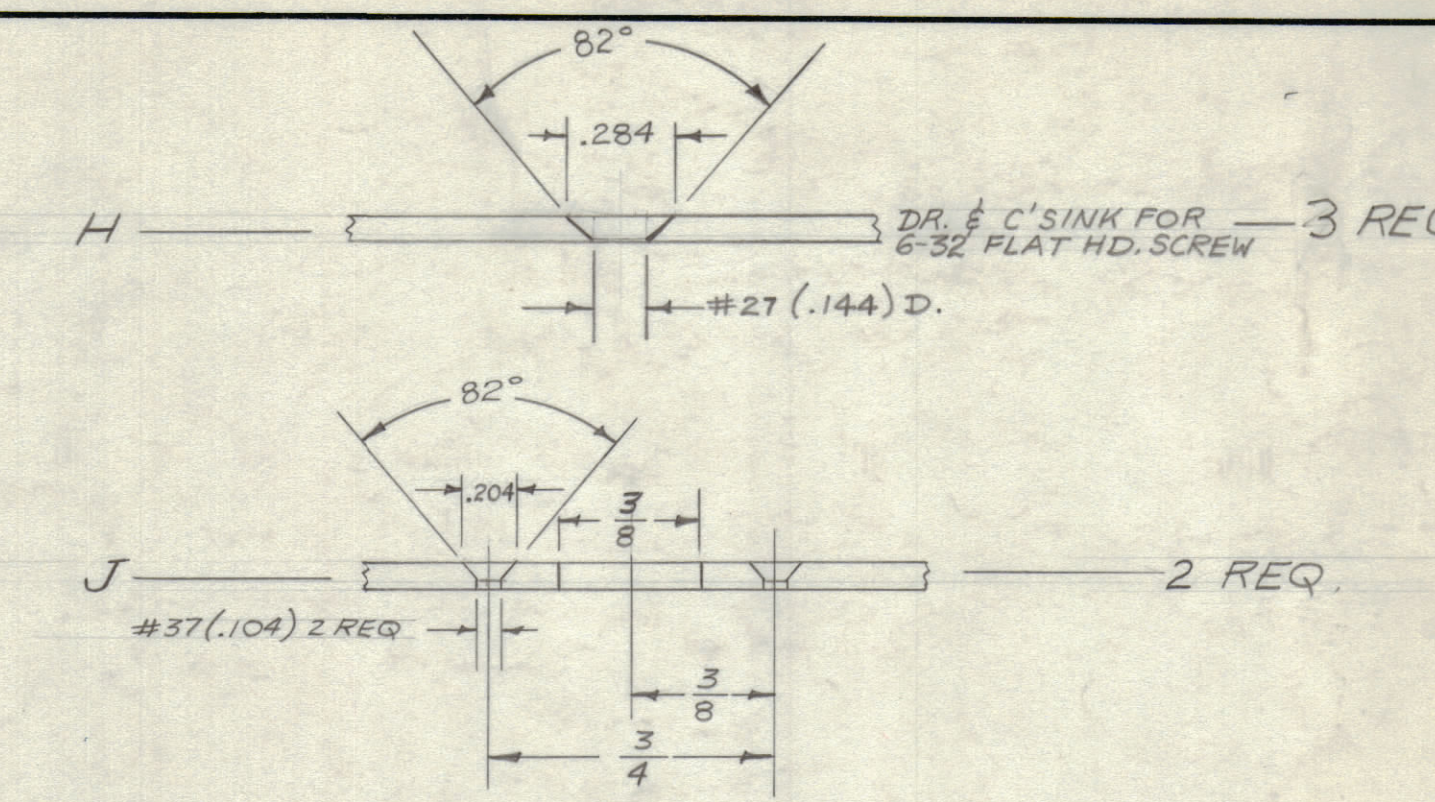
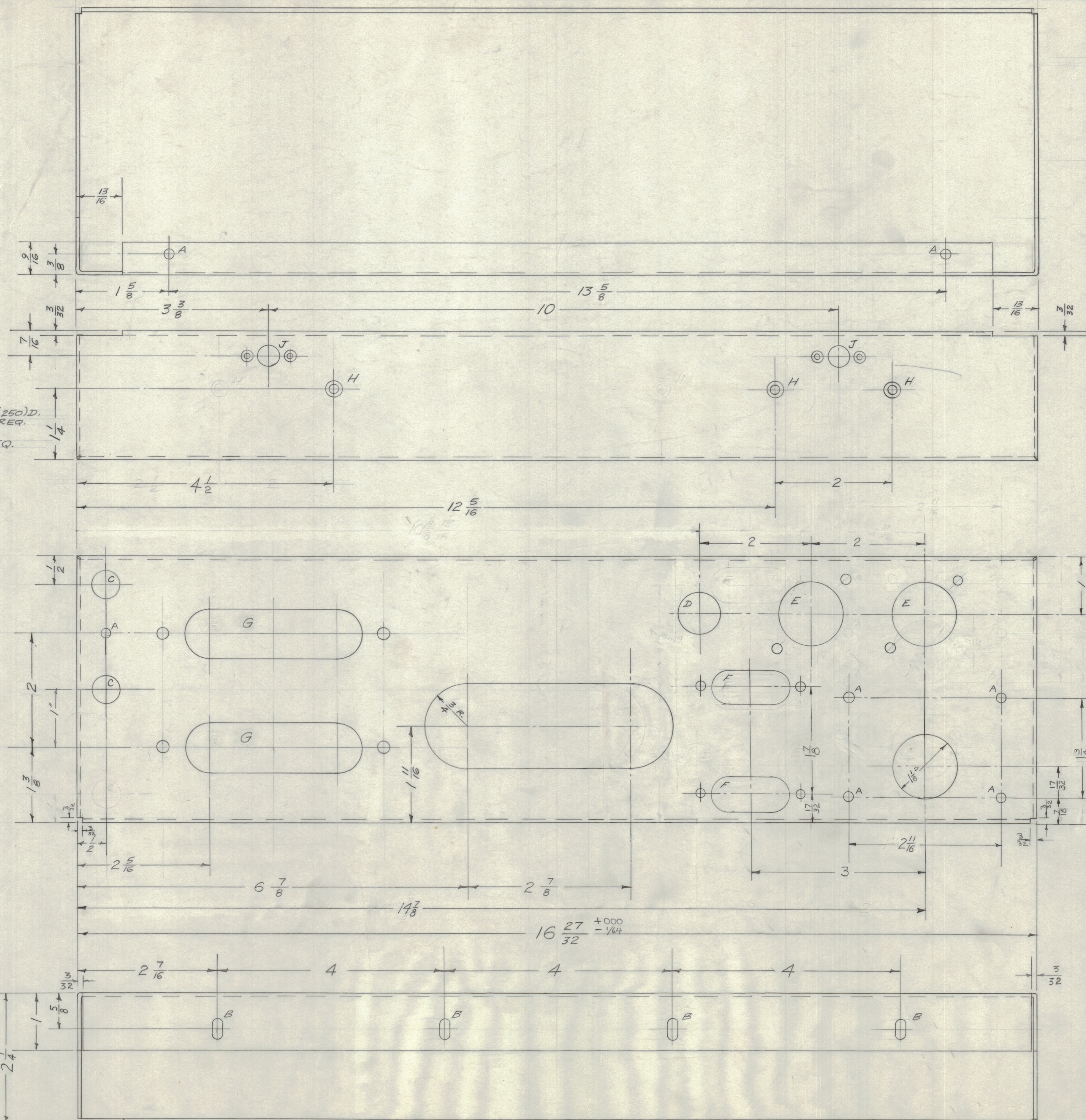
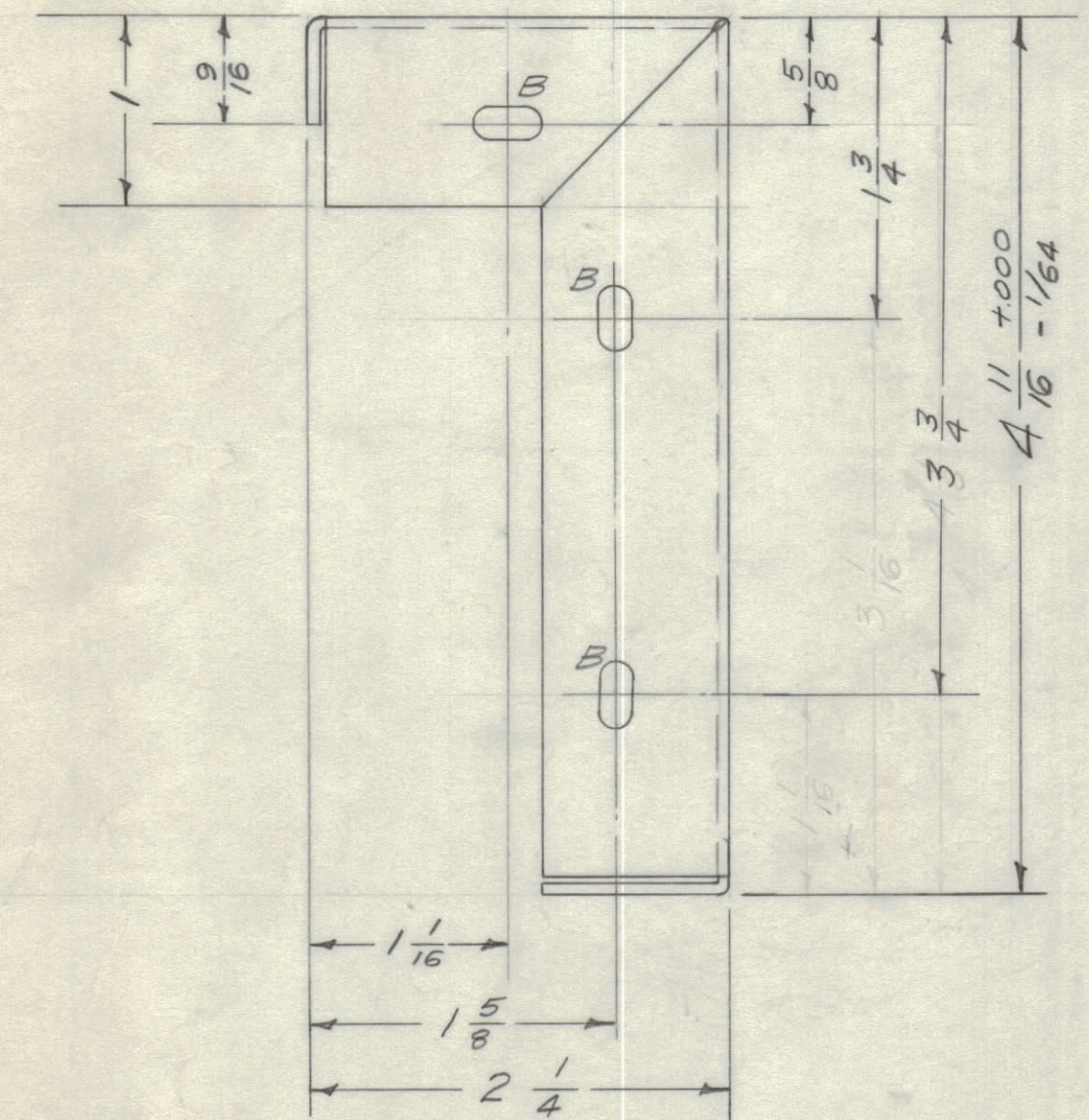
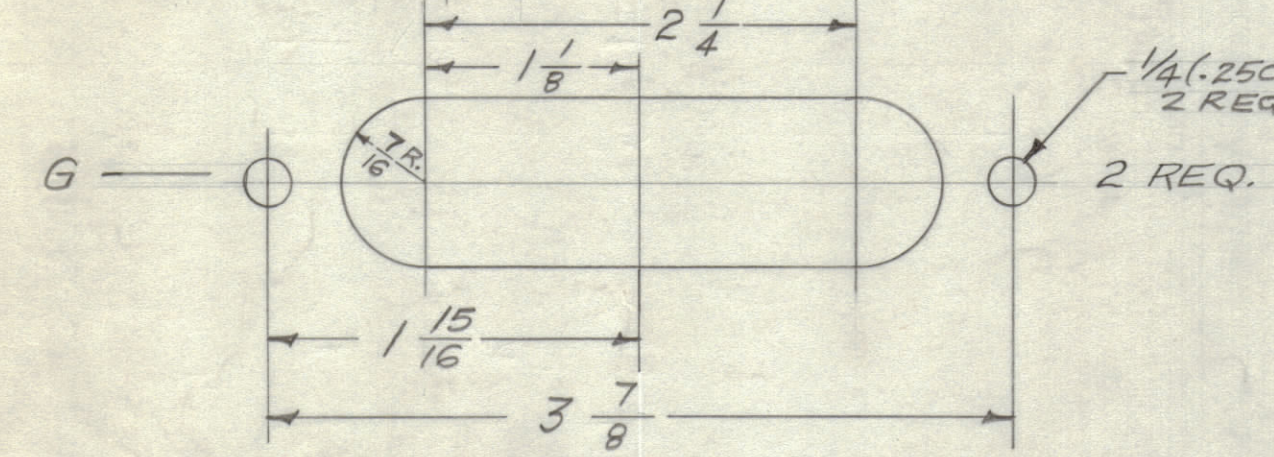
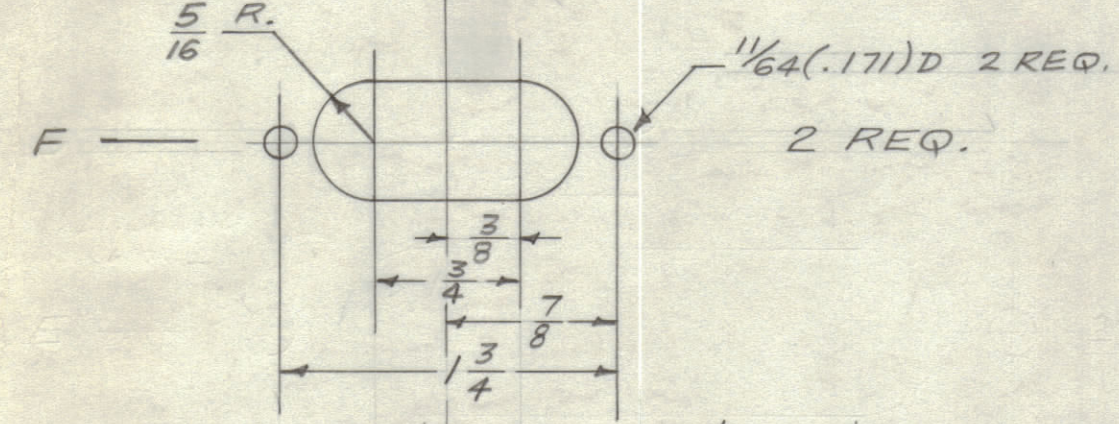
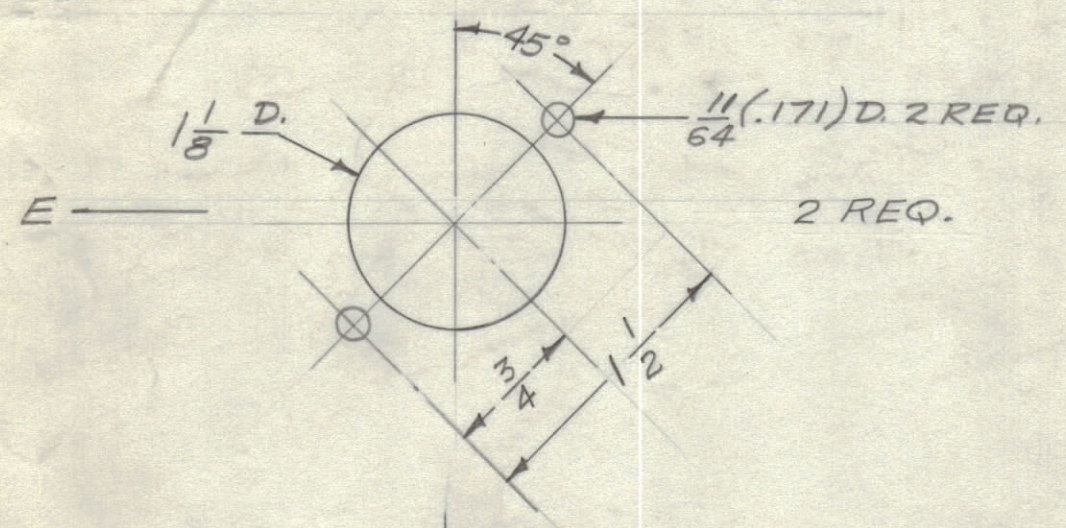


IF IT IS FOUND DESIRABLE TO CHANGE ANY TOLERANCE OR OTHER DETAIL SPECIFIED ON THIS DRAWING NOTIFY THE PURCHASER PROMPTLY.
 MAXIMUM ALLOWABLE TOLERANCES HAVE BEEN DETERMINED AND DEVIATIONS WILL BE CAUSE FOR REJECTION.
 REMOVE ALL BURRS AND SHARP EDGES

- A - $\frac{1}{64}$ (.171) D. 7 REQ.
- B - $\frac{1}{64} \times \frac{1}{32}$ SLOT 10 REQ.
- C - $\frac{1}{2}$ (.500) D. 2 REQ.
- D - $\frac{3}{4}$ (.750) D. 1 REQ.



ALL DIMENSIONS, HOLE SIZES, ETC. SAME AS OPPOSITE SIDE

NOTICE TO PERSONS RECEIVING THIS DRAWING

THE TECHNICAL MATERIEL CORPORATION claims proprietary right in the material disclosed herein. This drawing is issued in confidence for engineering information only and may not be reproduced or used to manufacture anything shown herein without permission from THE TECHNICAL MATERIEL CORPORATION to the user. This drawing is loaned for mutual assistance and is subject to recall at any time.

Property of:
 THE TECHNICAL MATERIEL CORPORATION
 MAMARONECK, NEW YORK

1	5-404 YEL. IRIDITE WAS	10/6/59	1001	AB	EMN
2	S-101 CAUSTIC DIB	2-8-57	1	EC	16
3	TWO A HOLES DELETED				
4	D, E, F HOLES RE-DRILLED				

FORM - 111

1	TSR	638	1-15-57
REQ PER UNIT	MODEL	PROJECT NO.	DATE

REQ. ITEM	PART NO.	DESCRIPTION	SYMBOL
.064 THK.		THE TECHNICAL MATERIEL CORP.	
STOCK SIZE		MAMARONECK, NEW YORK	
ALUMINUM		MAIN CHASSIS,	
MATERIAL	WEIGHT PER PC.	MODEL TSR	
6052-H32			
TYPE & TEMPER	151-15-57	DRAWN	ELEC. DES. APP. MECH. DES. APP.
HEAT TREAT. SPEC.	CHECKED	FINAL APPROVAL	
5-404 YEL. IRIDITE			
FINISH & SPEC. NO.			

MS-1020 B

MS-1020 B