

IF IT IS FOUND DESIRABLE TO CHANGE ANY TOLERANCE OR OTHER DETAIL SPECIFIED ON THIS DRAWING NOTIFY THE PURCHASER PROMPTLY.

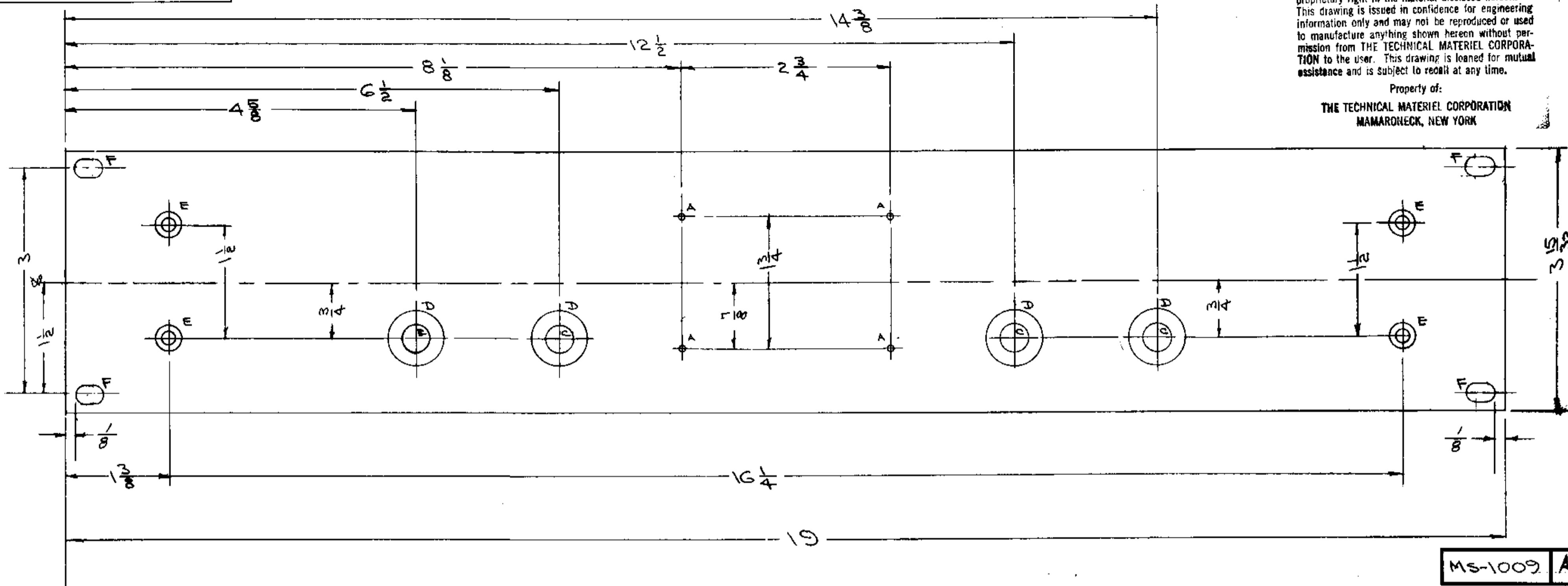
MAXIMUM ALLOWABLE TOLERANCES HAVE BEEN DETERMINED AND DEVIATIONS WILL BE CAUSE FOR REJECTION. REMOVE ALL BURRS AND SHARP EDGES

NOTICE TO PERSONS RECEIVING THIS DRAWING

THE TECHNICAL MATERIEL CORPORATION claims proprietary right in the material disclosed hereon. This drawing is issued in confidence for engineering information only and may not be reproduced or used to manufacture anything shown herein without permission from THE TECHNICAL MATERIEL CORPORATION to the user. This drawing is loaned for mutual assistance and is subject to recall at any time.

Property of:

THE TECHNICAL MATERIEL CORPORATION
MAMARONECK, NEW YORK

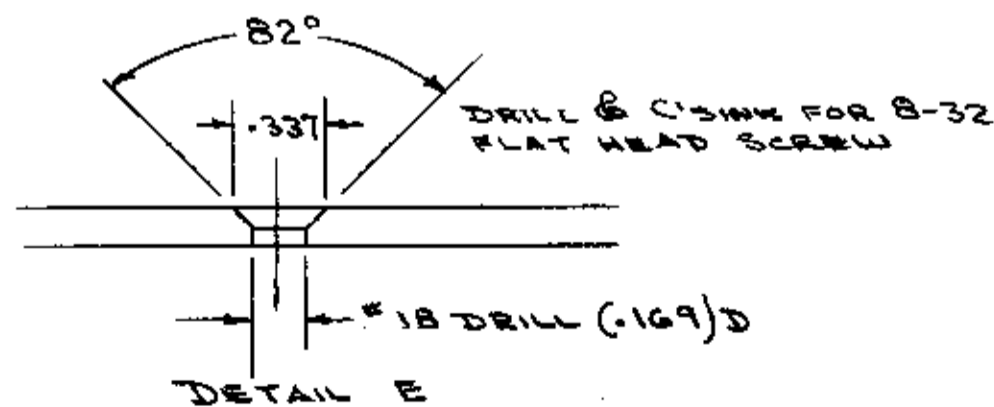


MS-1009 A

- A = #47 DRILL - 5/64" 4 HOLES
- C = 3/8 (.375)" 4 REQ.
- D = 3/4 (.750)" X 1/16 DEEP C-BORE 4 REQ.
- E = SEE DETAIL 4 REQ.

FRONT & EDGES ONLY

FINISH:
S-104 - VEL 120178
S-114 - ZINC CHROMATE PRIMER
S-115 - TMC SMOOTH GREEK ENAMEL
OR
PRIME & PAINT ACCORDING TO CUSTOMER'S REQUEST



F - 1/4 X 13/32 SLOT - 4 REQ.

REF: LD-320 (4 size) Engraving
LD-328 (4 size) Stamping

1	5604 - IR/10/17 WAS S/D - CAUSTIC DIP	12-9-57	104	P	JMN	
ISSUE	CHANGED FROM	DATE	CH. NO.	DRAFTS	CHECKER	ENG. APP.
TOLERANCES		SCALE:				
ALL OTHERS	DEC. DIM. ± FRAC. DIM. ± ANGULAR DIM. ±	DRILL, PUNCH, COMMERCIAL STOCK SIZES AND MANUFACTURERS TOLERANCES ARE NOT INCLUDED.				

1	TTF	638		1-10-57
REQ PER UNIT	MODEL	PROJECT NO.	ASBY. NO.	DATE
USED ON				

REQ. ITEM	PART NO.	DESCRIPTION	SYMBOL
3/16 THICK		THE TECHNICAL MATERIEL CORP. MAMARONECK, NEW YORK	
ALUMINUM		FRONT PANEL MACH.	
MATERIAL	WEIGHT PER PC.	MODEL TTF	
2024-T3			
TYPE & TEMPER			
HEAT TREAT. SPEC.			
NOTE			
FINISH & SPEC. NO.			

MS-1009 A