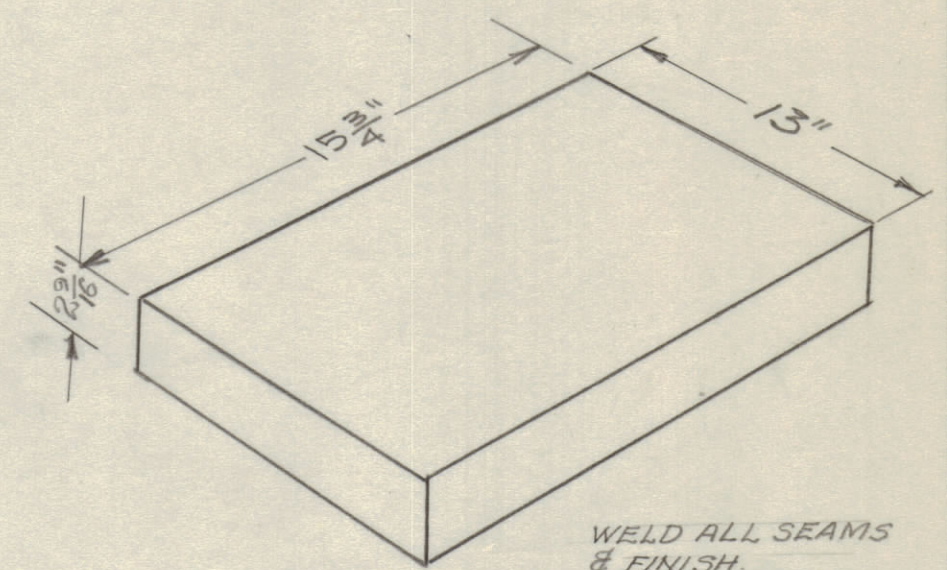
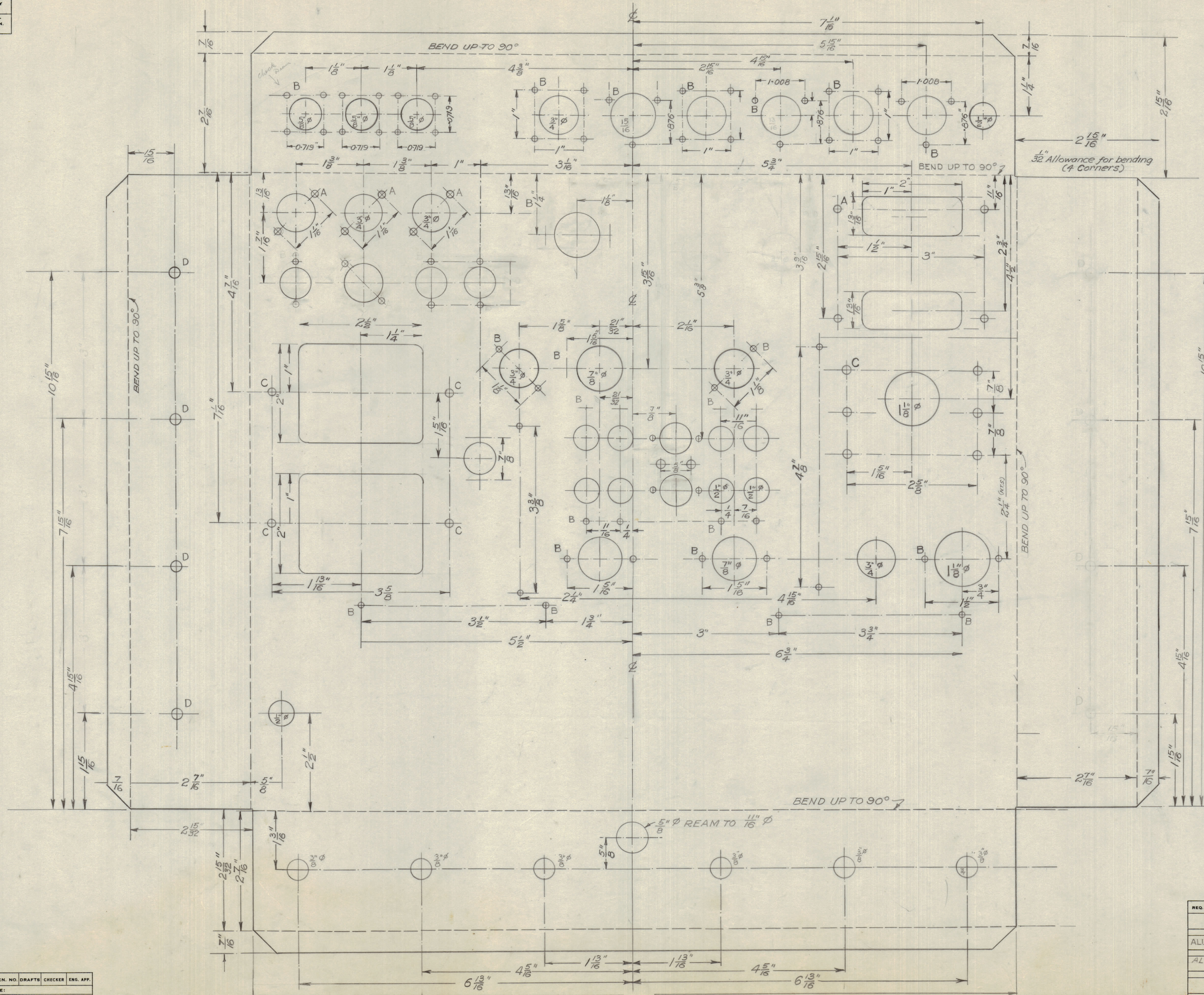


IF IT IS FOUND DESIRABLE TO CHANGE ANY TOLERANCE OR OTHER DETAIL, SPECIFIED ON THIS DRAWING NOTIFY THE PURCHASER PROMPTLY.
MAXIMUM ALLOWABLE TOLERANCES HAVE BEEN DETERMINED AND DEVIATIONS WILL BE CAUSE FOR REJECTION. REMOVE ALL BURRS AND SHARP EDGES

NOTICE TO PUR. D.S RECEIVING THIS DRAWING

THE TECHNICAL MATERIEL CORPORATION claims proprietary right in the material disclosed herein. This drawing is issued in confidence for engineering information only and may not be reproduced or used to manufacture anything shown hereon without permission from THE TECHNICAL MATERIEL CORPORATION to the user. This drawing is loaned for mutual assistance and is subject to recall at any time.

Property of:
THE TECHNICAL MATERIEL CORPORATION
MAMARONECK, NEW YORK



SKETCH SHOWING OVERALL SIZE OF FINISHED CHASSIS

MOUNTING HOLES

A	DRILL TO CLEAR	6-32 M.S
B	"	4-40 M.S
C	"	10-32 M.S
D	"	8-32 M.S

ISSUE	ITEM	CHANGED FROM	DATE	CN. NO.	DRAFTS	CHECKER	ENG. APP.
ALL OTHERS							

TOLERANCES: DEC. DIM. ±, FRAC. DIM. ±, ANGULAR DIM. ±

SCALE: DRILL, PUNCH, COMMERCIAL STOCK SIZES AND MANUFACTURERS TOLERANCES ARE NOT INCLUDED.

BCP-1	10028	MAY 19 TH 54
MODEL	PROJECT NO.	DATE
	ASSY. NO.	

REQ. ITEM	PART NO.	DESCRIPTION	SYMBOL
0.064 SHEET		TMC (Canada) LIMITED OTTAWA ONTARIO	
ALUMINUM		CHASSIS DRILLING	
MATERIAL WEIGHT PER FC.		CONTROL UNIT CN/SIH 601/2	
ALCAN 4.57-0			
TYPE & TEMPER		E.W.B.G	
		DRAWN	ELEC. DES. APP. MECH. DES. APP.
HEAT TREAT. SPEC.		CHECKED	FINAL APPROVAL
			MS-10056
			TMC S-101 & S-107
			FINISH & SPEC. NO.

MS-10056