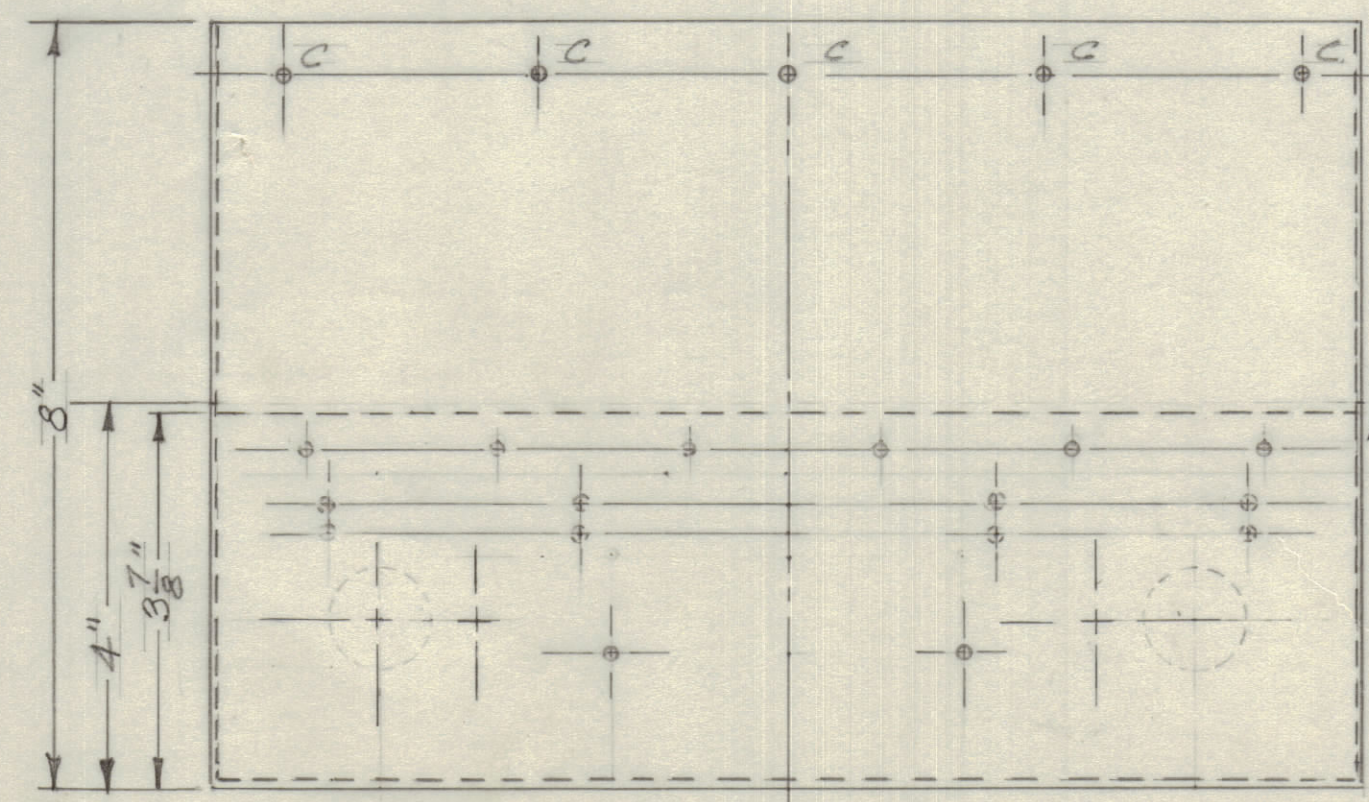
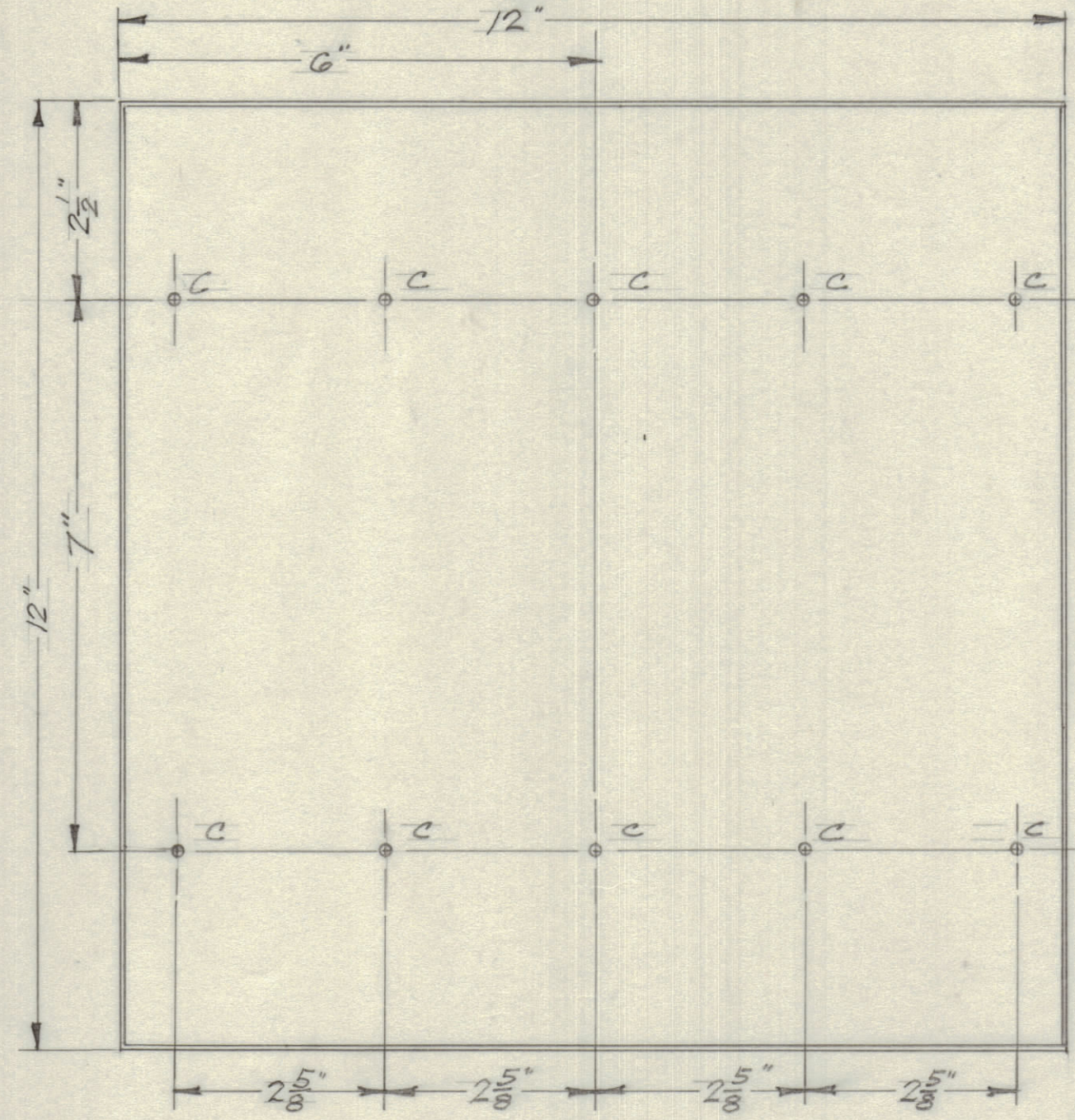
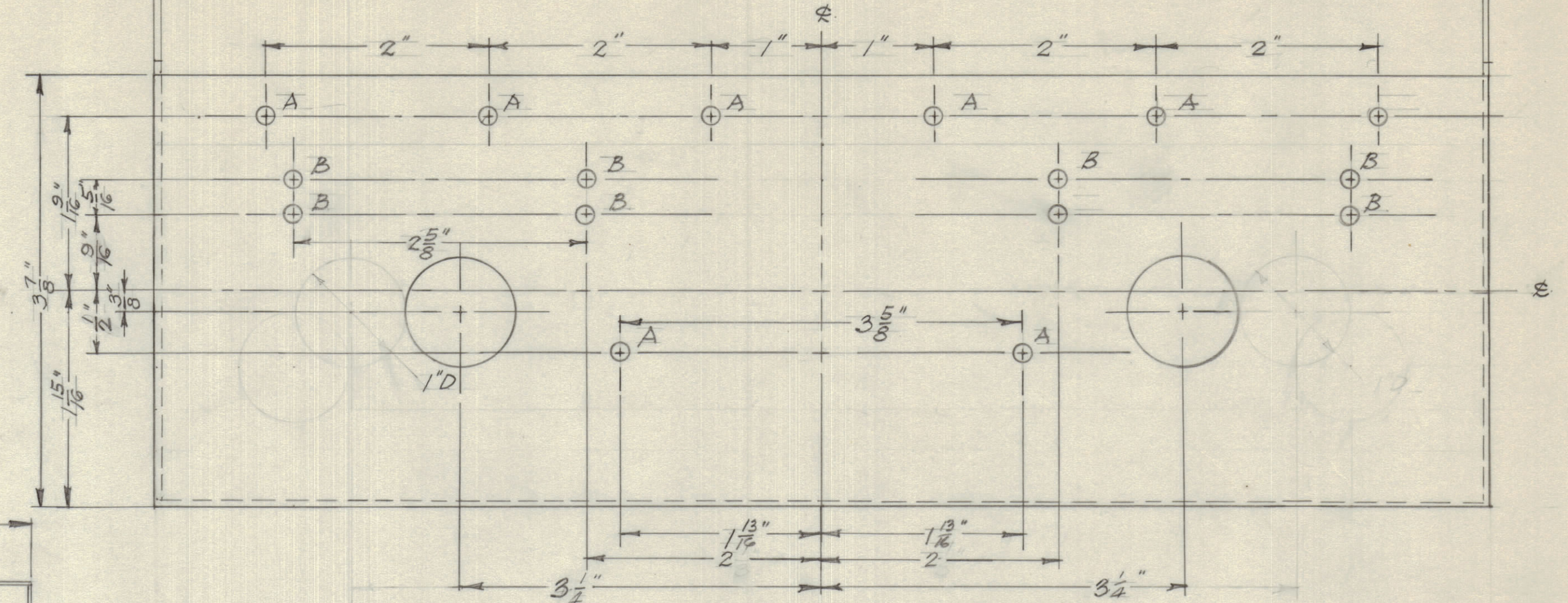


IF IT IS FOUND DESIRABLE TO CHANGE ANY TOLERANCE OR OTHER DETAIL SPECIFIED ON THIS DRAWING NOTIFY THE PURCHASER PROMPTLY.  
 MAXIMUM ALLOWABLE TOLERANCES HAVE BEEN DETERMINED AND DEVIATIONS WILL BE CAUSE FOR REJECTION. REMOVE ALL BURRS AND SHARP EDGES

**NOTICE TO PERSONS RECEIVING THIS DRAWING**

THE TECHNICAL MATERIEL CORPORATION claims proprietary right in the material disclosed hereon. This drawing is issued in confidence for engineering information only and may not be reproduced or used to manufacture anything shown hereon without permission from THE TECHNICAL MATERIEL CORPORATION to the user. This drawing is loaned for mutual assistance and is subject to recall at any time.

Property of:  
 THE TECHNICAL MATERIEL CORPORATION  
 MAMARONECK, NEW YORK



DRILLING PLAN SHOWN AT FULL SIZE

- A - #19 DRILL TO BE USED
- B - #28 " " " "
- C - #29 " " " "

MS-10052

ISSUE	ITEM	CHANGED FROM	DATE	CN. NO.	DRAFTS	CHECKER	ENG. APP.
TOLERANCES							
ALL		DEC. DIM. ±	DRILL, PUNCH, COMMERCIAL STOCK				
OTHERS		FRAC. DIM. ±	SIZES AND MANUFACTURERS				
		ANGULAR DIM. ±	TOLERANCES ARE NOT INCLUDED.				

MODEL	10028	ASS'Y. NO.	13-6-54
PROJECT NO.		DATE	
USED ON			

REQ. ITEM	PART NO.	DESCRIPTION	SYMBOL
0.004" SHEET		TMC (Canada) LIMITED	
STOCK SIZE		OTTAWA ONTARIO	
ALUMINUM		LOUDSPEAKER CABINET	
MATERIAL	WEIGHT PER PC.	CN/SIH 601/2	
CSA HMB7-0			
TYPE & TEMPER		JRH.	
		DRAWN	ELEC. DES. APP. MECH. DES. APP.
HEAT TREAT. SPEC.		CHECKED	FINAL APPROVAL
			MS-10052
FINISH & SPEC. NO.			