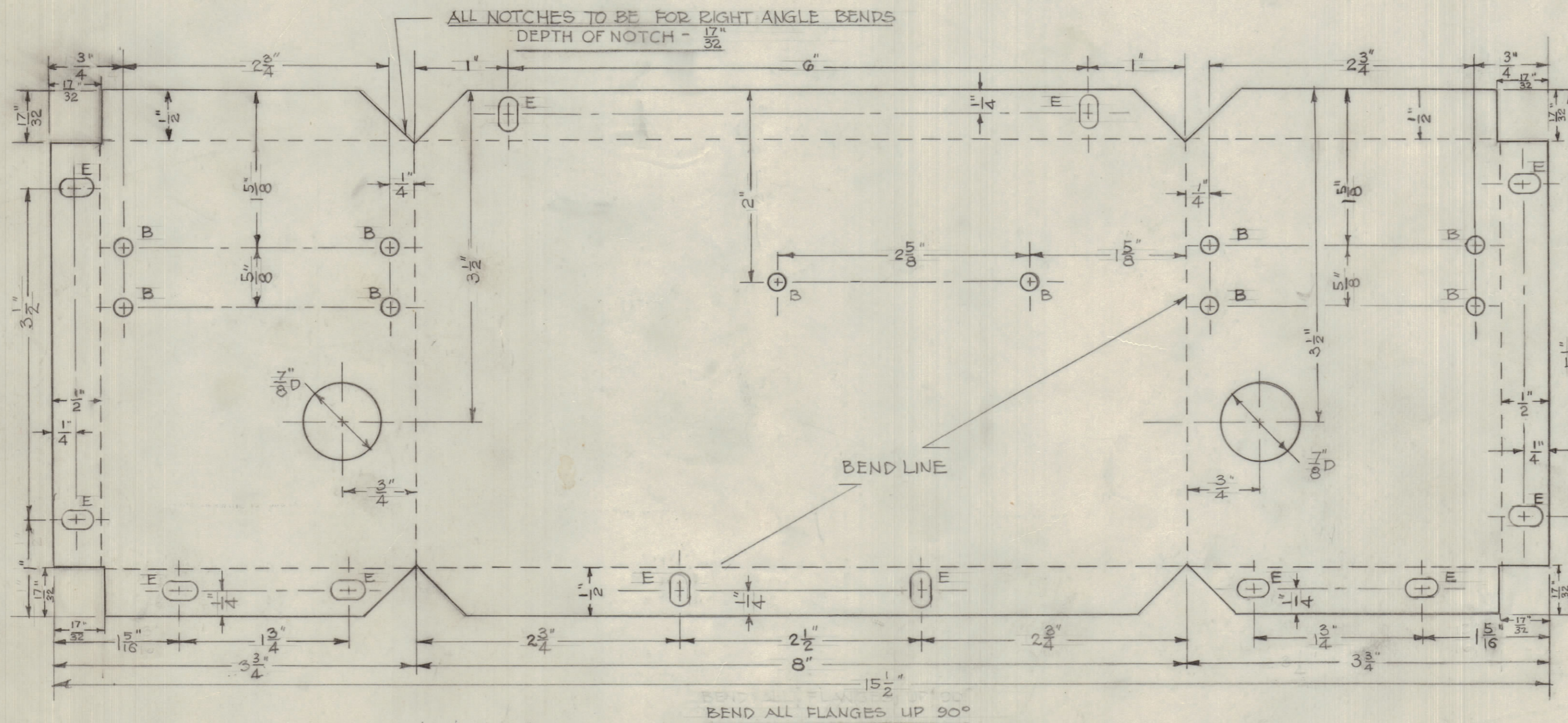


NOTICE TO PERSONS RECEIVING THIS DRAWING

THE TECHNICAL MATERIEL CORPORATION claims proprietary right in the material disclosed hereon. This drawing is issued in confidence for engineering information only and may not be reproduced or used to manufacture anything shown hereon without permission from THE TECHNICAL MATERIEL CORPORATION to the user. This drawing is loaned for mutual assistance and is subject to recall at any time.

Property of:
THE TECHNICAL MATERIEL CORPORATION
MAMARONECK, NEW YORK



MS-1002G

NOTICE TO PERSONS RECEIVING THIS DRAWING

THE TECHNICAL MATERIEL CORPORATION claims proprietary right in the material disclosed hereon. This drawing is issued in confidence for engineering information only and may not be reproduced or used to manufacture anything shown hereon without permission from THE TECHNICAL MATERIEL CORPORATION to the user. This drawing is loaned for mutual assistance and is subject to recall at any time.

Property of:
THE TECHNICAL MATERIEL CORPORATION
MAMARONECK, NEW YORK

- B - 11/64" DIA 10 HOLES PUNCHED
- D - 7/8" DIA 2 "
- E - 11/64" X 1/32" 12 SLOTS

SCALE FULL SIZE

DCP-2	10015		14-10-53
MODEL	PROJECT NO.	ASS'Y NO.	DATE
	USED ON		

15 1/2" x 5 1/2" x 0.051"		TMC(Canada) LTD	
STOCK SIZE		OTTAWA ONTARIO	
ALUMINUM		TEMPLATE FOR CONTROL	
MATERIAL W.T. PER PG.		BOX	
ALCAN 575-1 HARD		JRH	
ALCOA 525-H34		DRAWN	ELEC. DES. APP MECH. DES. APP
TYPE & TEMPER.			
HEAT TREAT SPEC		CHECKED	FINAL APPROVAL
FINISH & SPEC. NO.			MS-1002G