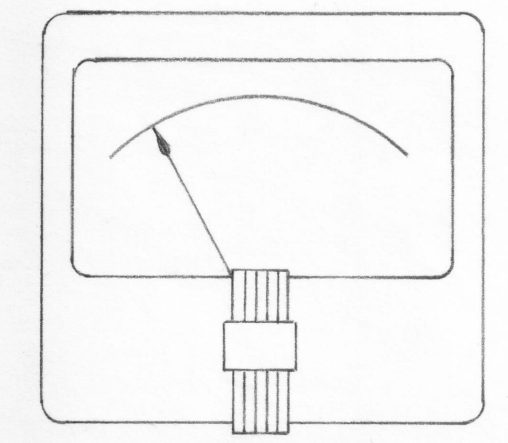
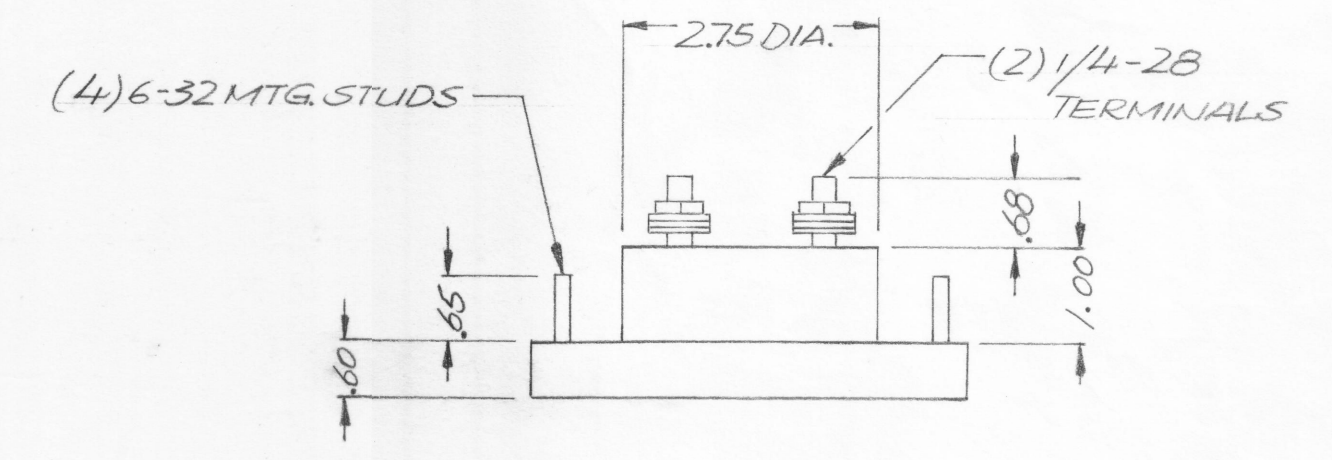
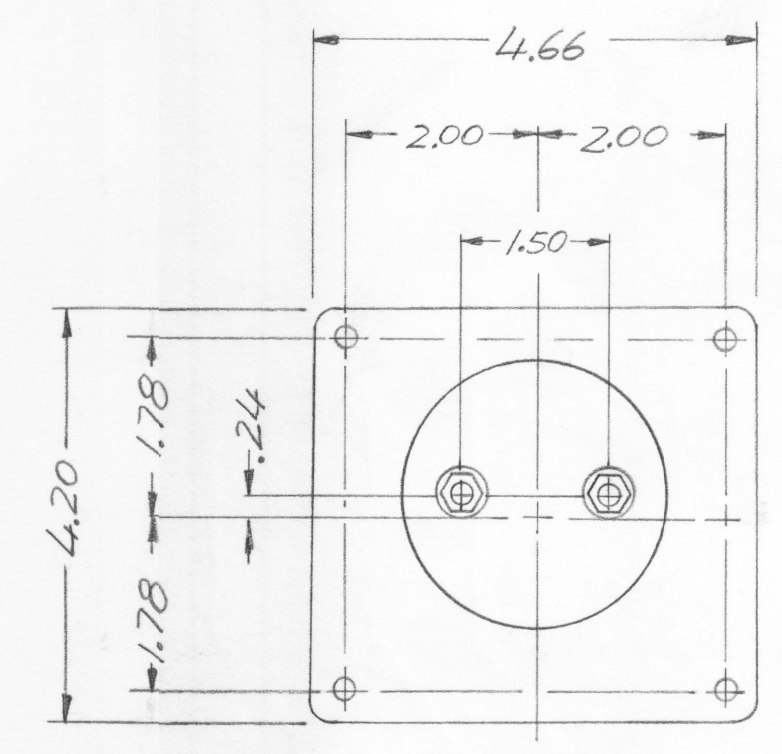
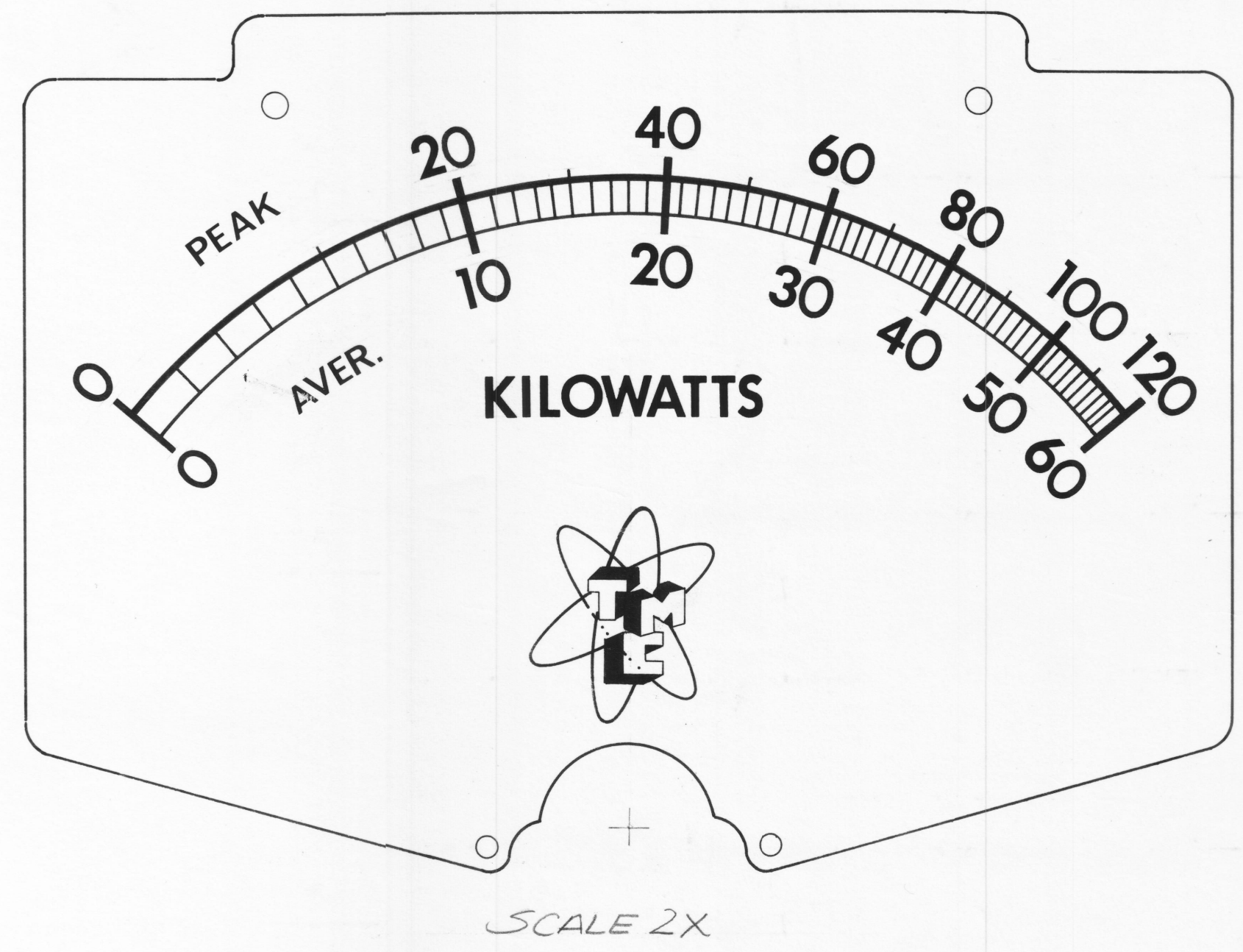


ENGINEERING SKETCH NOT FOR PRODUCTION

REVISIONS						
ZONE	LTR	DESCRIPTION	DATE	E.M.N.NO	DRAFT	CHKD APPD
	Ø	ORIGINAL RELEASE FOR PRODUCTION	12/14/72		CU	



NOTES

1. ALL NUMERALS, LETTERS, MAJOR AND MINOR CALIBRATION POINTS ARE TO BE IN BLACK.
2. CASE - STANDARD COMMERCIAL RECTANGULAR 4 1/2".
3. FINISH - GLOSSY BLACK
4. MOVEMENT - 0-100 MICROAMPS.
5. APPROX. RESISTANCE - 2000 Ω
6. POINTER - SPADE TYPE.
7. HARDWARE - (2) FLAT WASHERS, (2) 1/4-28 HEXAGON NUTS FOR TERMINALS (4) LOCKWASHERS, (4) 6-32 HEXAGON NUTS FOR MOUNTING, SUPPLIED BY MFR.
8. DESIGNED FOR USE W/THRULINE DIRECTIONAL WATTMETER TMC #DC-101-1

KIT 346-1A		
QTY / UNIT	MODEL USED ON	ASS'Y NO.
APPLICATION		
CODE		

NOTICE TO PERSONS RECEIVING THIS DRAWING
 THE TECHNICAL MATERIEL CORPORATION claims proprietary right in the material disclosed hereon. This drawing is issued in confidence for engineering information only and may not be reproduced or used to manufacture anything shown hereon without permission from THE TECHNICAL MATERIEL CORPORATION to the user. This drawing is loaned for mutual assistance and is subject to recall at any time.

UNLESS OTHERWISE SPECIFIED DIMENSIONS ARE IN INCHES AND INCLUDE CHEMICALLY APPLIED OR PLATED FINISHES

TOLERANCES ON	
DECIMALS	FRACTIONS
.X ± .05	± 1/64
.XX ± .01	ANGLES
.XXX ± .005	± 0° -30'

QTY. REQ.	ITEM	PART NO.	DESCRIPTION	SYMBOL
F. BUDETTI LIST OF MATERIAL				
FINAL APPROVAL		DATE	THE TECHNICAL MATERIEL CORP. MAMARONECK, NEW YORK METER, KILOWATTS	
MECH. DES.		DATE		
ELECT. DES.		DATE		
CHECKED		DATE		
DRAWN		DATE	SIZE CODE IDENT. NO. DWG NO. ISSUE C 82679 MR 234 Ø	
SCALE			SHEET	OF