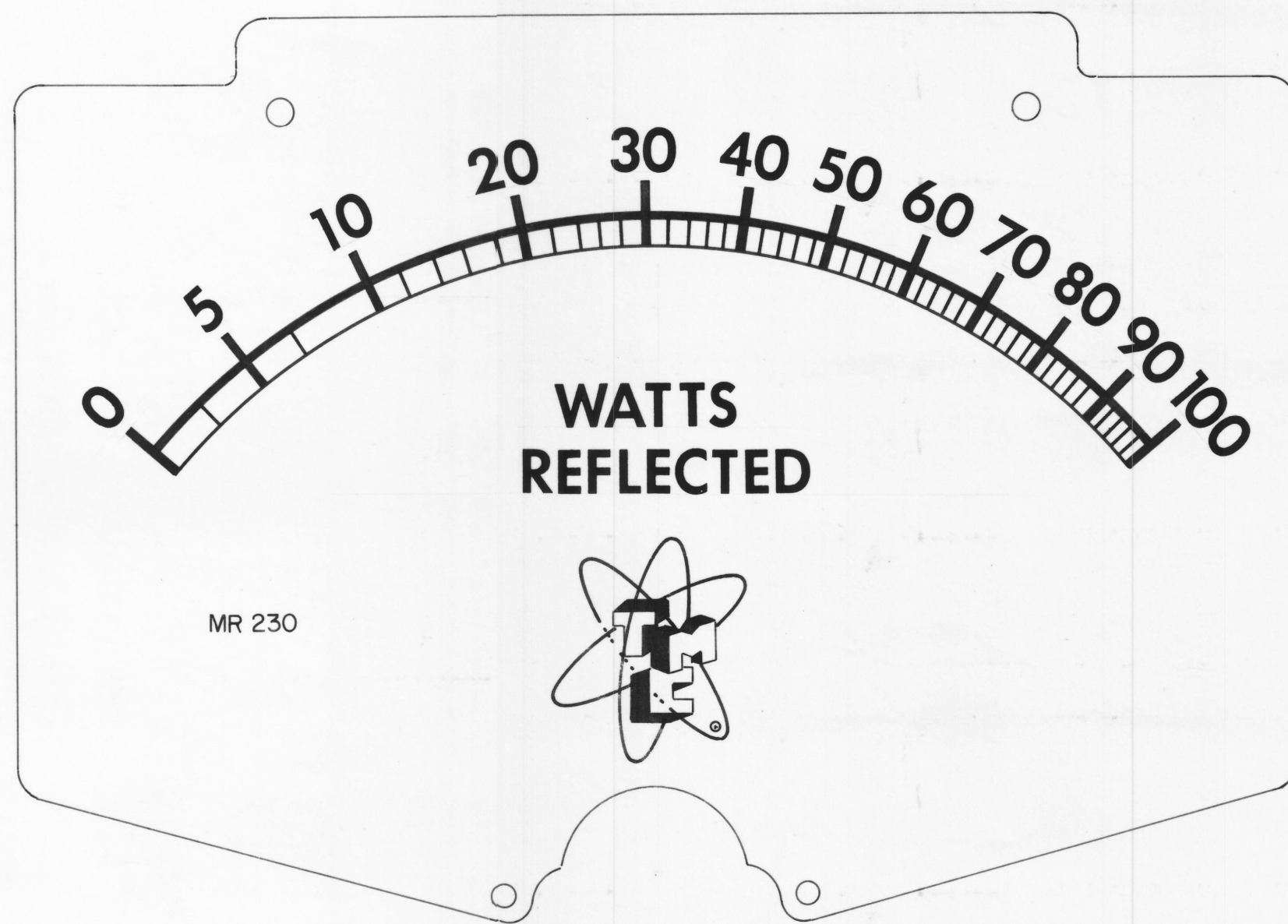
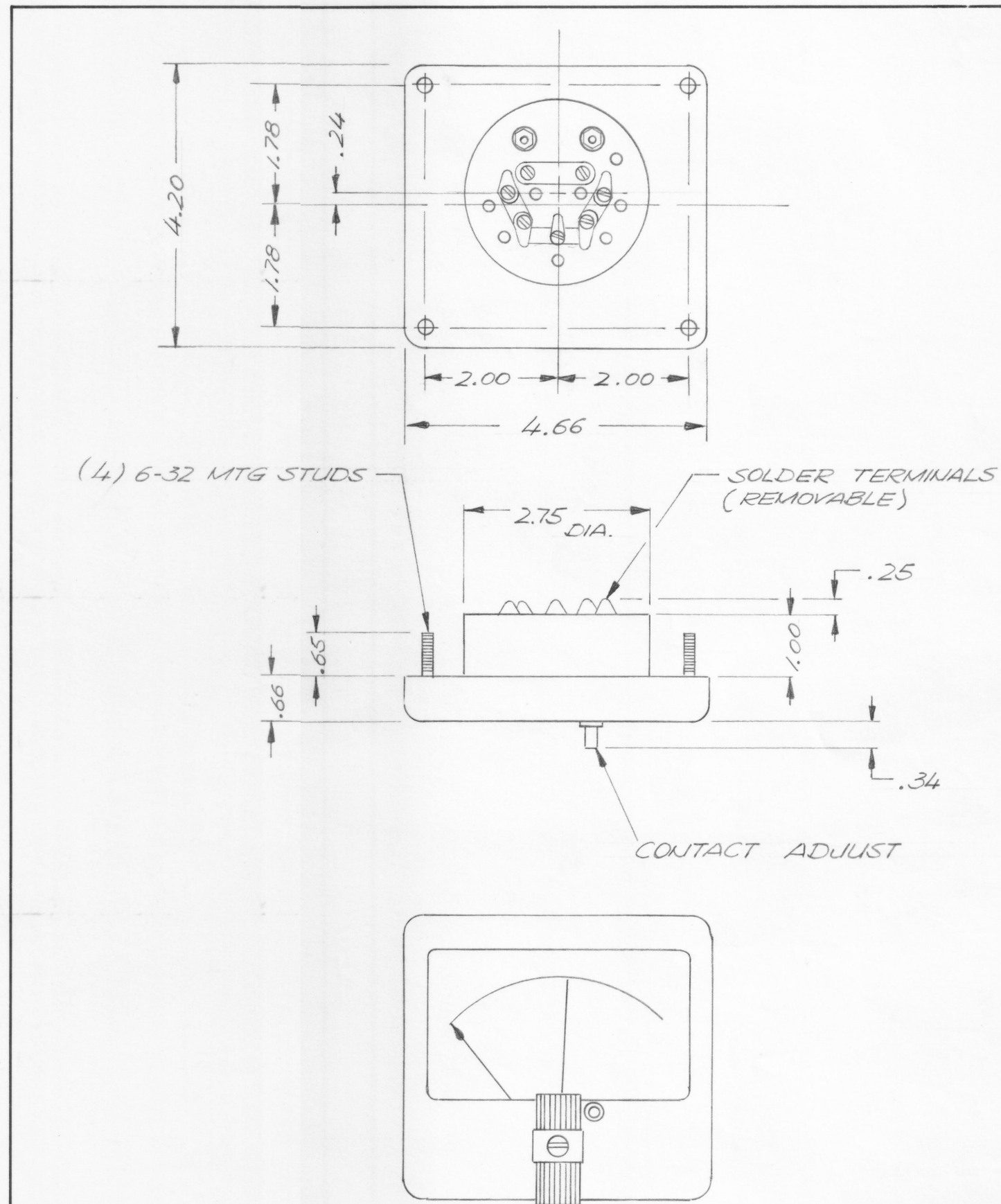


REVISIONS							
E.M.N.NO	DRAFT	CHKD	ZONE	LTR	DESCRIPTION	DATE	APPROVED
	W			Ø	ORIGINAL RELEASE FOR PRODUCTION	3/10/78	



SCALE 2:1



CASE - STANDARD COMMERCIAL RECTANGULAR 4- 1/2

FINISH - GLOSSY BLACK MODEL NO. 29XA

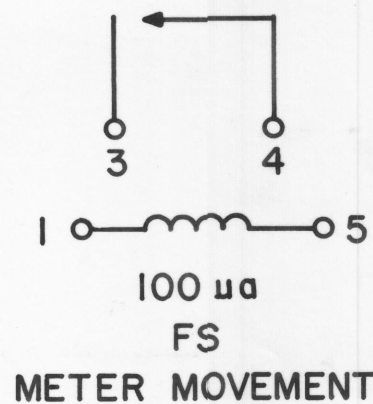
MOVEMENT - 0-100 MICROAMPS D.C.

APPROXIMATE RESISTANCE - 1800 Ω

POINTER - SPADE TYPE, KNIFE EDGE

ADJUSTMENT - UPPER CONTACT ADJUSTMENT

HARDWARE - (4) LOCKWASHERS,
(4) 6-32 HEXAGON NUTS
(SUPPLIED BY MFG.)



NOTE

1. CIRCUIT BETWEEN TERMINALS 3 & 4 SHOULD CLOSE WHEN BLACK POINTER TOUCHES RED POINTER, MAXIMUM CONTACT RATING: 15VDC (Q) 10MA RESISTIVE OR DIODE PROTECTED INDUCTIVE LOAD.
2. THERE SHOULD BE AN OPEN CIRCUIT BETWEEN TERMINALS 3 & 1 OR 5.

TPM-1K		
QTY / UNIT	MODEL USED ON	ASS'Y NO.
APPLICATION		
CODE		

NOTICE TO PERSONS RECEIVING THIS DRAWING
THE TECHNICAL MATERIEL CORPORATION claims proprietary right in the material disclosed herein. This drawing is issued in confidence for engineering information only and may not be reproduced or used to manufacture anything shown hereon without permission from THE TECHNICAL MATERIEL CORPORATION to the user. This drawing is loaned for mutual assistance and is subject to recall at any time.

UNLESS OTHERWISE SPECIFIED DIMENSIONS ARE IN INCHES AND INCLUDE CHEMICALLY APPLIED OR PLATED FINISHES

TOLERANCES ON

DECIMALS	FRACTIONS
.X ± .05	± 1/64
.XX ± .01	ANGLES
.XXX ± .005	± 0° -30'

MATERIAL

FINISH

QTY. REQ.	ITEM	PART NO.	DESCRIPTION	SYMBOL		
F.B. LIST OF MATERIAL						
FINAL APPROVAL		DATE	THE TECHNICAL MATERIEL CORP. MAMARONECK, NEW YORK METER, WATTS REFLECTED			
MECH. DES.		DATE				
ELECT. DES.		DATE				
CHECKED		DATE				
DRAWN		DATE	SIZE CODE IDENT NO. DWG NO. ISSUE			
G. EVANGELIST		10/20/71	C	82679	MR 230	Ø
SCALE			SHEET OF			