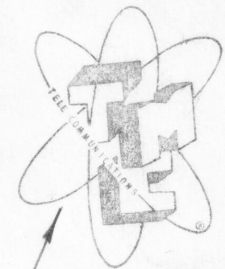
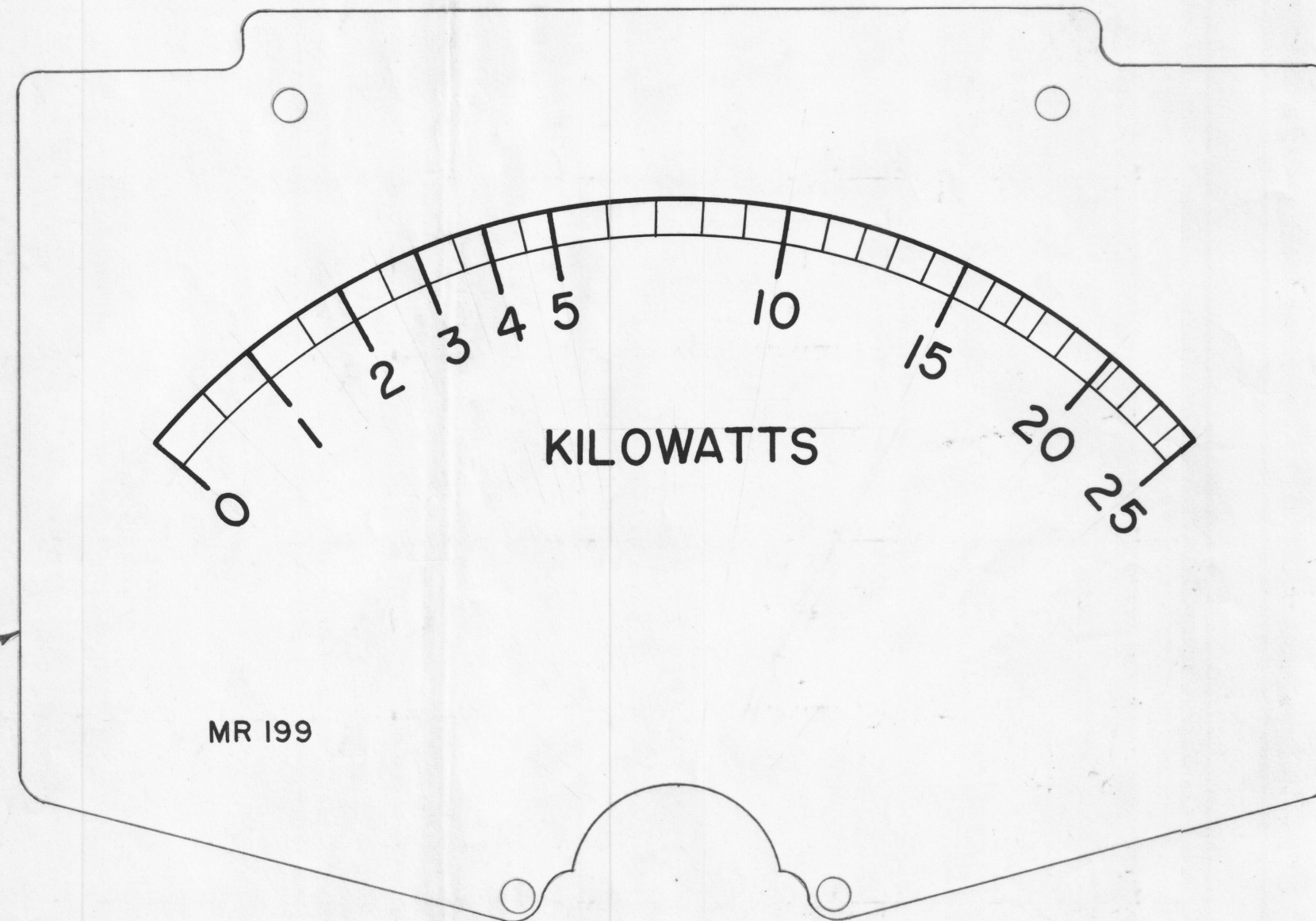
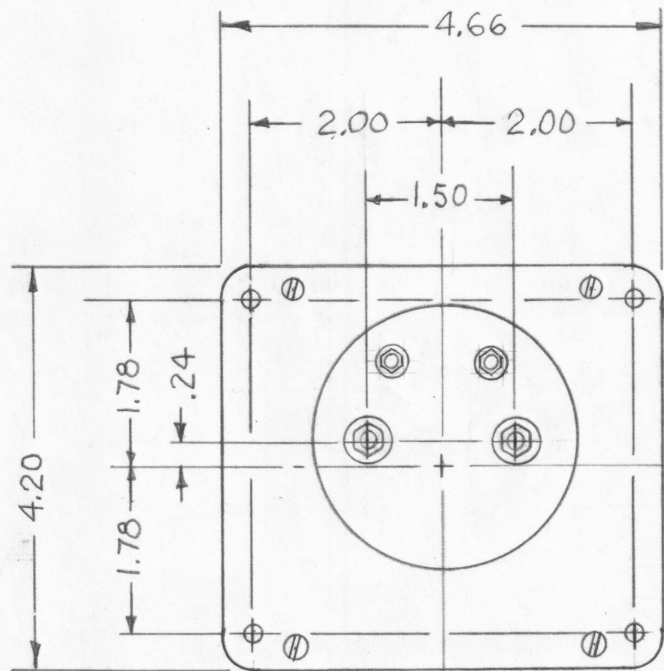
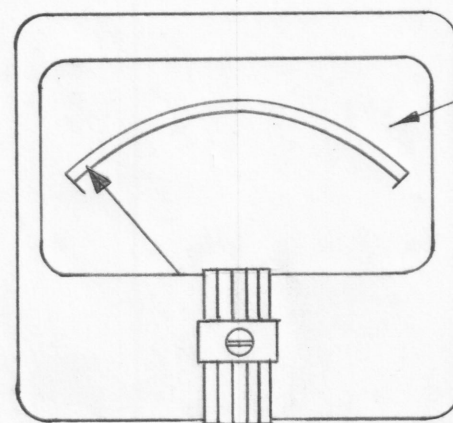
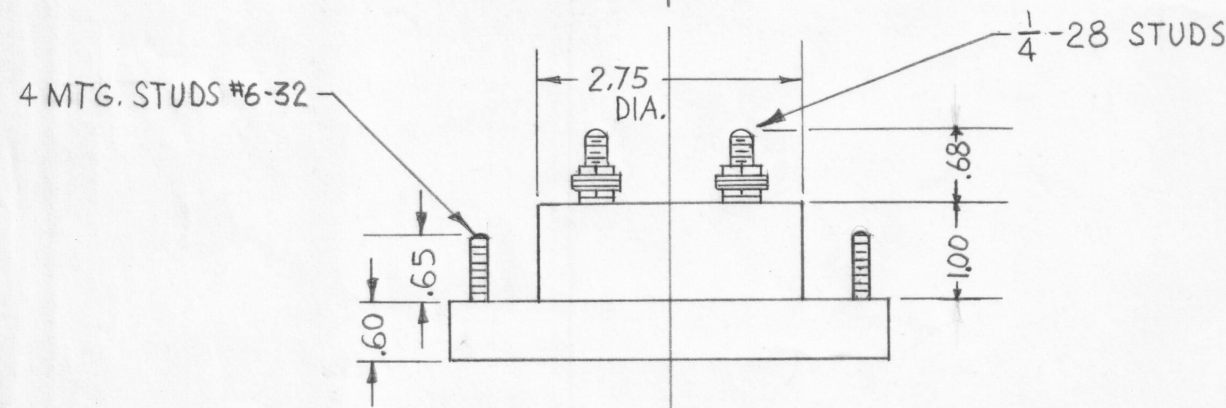


REVISIONS						
ZONE	LTR	DESCRIPTION	DATE	E.M.N.NO	DRAFT	CHKD APPD
	X	EXP. RELEASE	10-19-67		H.S.	[Signature]
	Ø	ORIGINAL RELEASE FOR PRODUCTION	4-16-68	Ø	H.S.	[Signature]



INSERT TMC INSIGNIA (NP117) BELOW THE WORD KILOWATTS CENTERED TO BOTTOM

ALL LETTERS, NUMERALS, MAJOR AND MINOR CALIBRATION POINTS, AND INSIGNIA ARE TO BE IN BLACK



NOTES:

- CASE: STANDARD COMMERCIAL 4-1/2 RECTANGULAR
- FINISH: GLOSSY BLACK
- MOVEMENT: 0-100 MICROAMPS
- APPROX. RESISTANCE: 1825 OHMS
- POINTER: SPADE TYPE
- HARDWARE: TWO FLAT WASHERS AND TWO 1/4-28 HEX NUTS FOR TERMINALS.
- FOUR LOCKWASHERS AND FOUR 6-32 HEX NUTS FOR MOUNTING, SUPPLIED BY MFG.

QTY. REQ.	ITEM	PART NO.	DESCRIPTION	SYMBOL
-----------	------	----------	-------------	--------

F. BUDETTI LIST OF MATERIAL

FINAL APPROVAL	DATE	THE TECHNICAL MATERIEL CORP. MAMARONECK, NEW YORK METER, MICRO AMP.
MECH. DES.	DATE	
ELECT. DES.	DATE	
CHECKED	DATE	
DRAWN	DATE	

1	BCT-10KA	AX682
QTY / UNIT	MODEL USED ON	ASS'Y NO.
APPLICATION		
CODE	S401-44 (17-29)	
NOTICE TO PERSONS RECEIVING THIS DRAWING THE TECHNICAL MATERIEL CORPORATION claims proprietary right in the material disclosed hereon. This drawing is issued in confidence for engineering information only and may not be reproduced or used to manufacture anything shown hereon without permission from THE TECHNICAL MATERIEL CORPORATION to the user. This drawing is loaned for mutual assistance and is subject to recall at any time.		

UNLESS OTHERWISE SPECIFIED DIMENSIONS ARE IN INCHES AND INCLUDE CHEMICALLY APPLIED OR PLATED FINISHES	
TOLERANCES ON	
DECIMALS	FRACTIONS
.X ± .05	± 1/64
.XX ± .015	ANGLES
.XXX ± .005	± 0° -30'
MATERIAL	
FINISH	SEE NOTES

SIZE	CODE IDENT. NO.	DWG NO.	ISSUE
C	82679	MR199	Ø
SCALE 2:1		SHEET	OF