

REVISIONS

ZONE	SYM	DESCRIPTION	DATE	E.M.N. NO.	DRAFT	CHKD	APPD
Ø		ORIGINAL RELEASE FOR PROD	5/6/66				
A		ADDED PURCHASE NOTE, REMOVED POWER REQ. NOTE PICTORIAL ADDED	3-7-67	17918	L.A.K.		

0-10 KW DIAL DATA FOR SIMPSON 3324XA METER
(METER IS 100 MICROAMPERES ±2% WITH 1825 OHMS RESISTANCE)

CALIBRATION CURVE

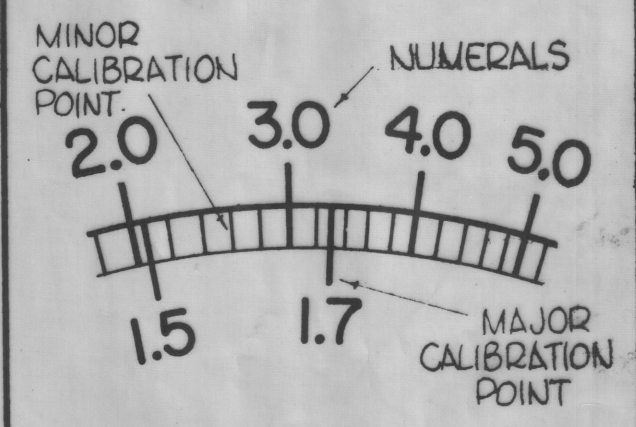
KILOWATTS	MICROAMPS	KILOWATTS	MICROAMPS
0	0	5.0	65.9
.2	6.0	.2	67.4
.4	11.2	.4	68.9
.6	15.9	.6	70.4
.8	20.1	.8	71.9
1.0	24.0	6.0	73.4
.2	27.3	.2	74.8
.4	30.3	.4	76.2
.6	33.1	.6	77.6
.8	35.8	.8	79.0
2.0	38.4	7.0	80.4
.2	40.8	.2	81.8
.4	43.1	.4	83.2
.6	45.2	.6	84.6
.8	47.2	.8	86.0
3.0	49.2	8.0	87.3
.2	51.1	.2	88.6
.4	52.9	.4	89.9
.6	54.7	.6	91.2
.8	56.4	.8	92.5
4.0	58.1	9.0	93.8
.2	59.7	.2	95.1
.4	61.3	.4	96.4
.6	62.9	.6	97.6
.8	64.4	.8	98.8
5.0	65.9	10.0	100

NOTE-

THE FOLLOWING NUMERALS LETTERS AND MAJOR CALIBRATION POINTS ARE TO BE IN RED (SEE DETAIL J)

NUMERALS - 1.2, 1.3, 1.4, 1.5
1.7, 2, 2.5

LETTERS - SWR

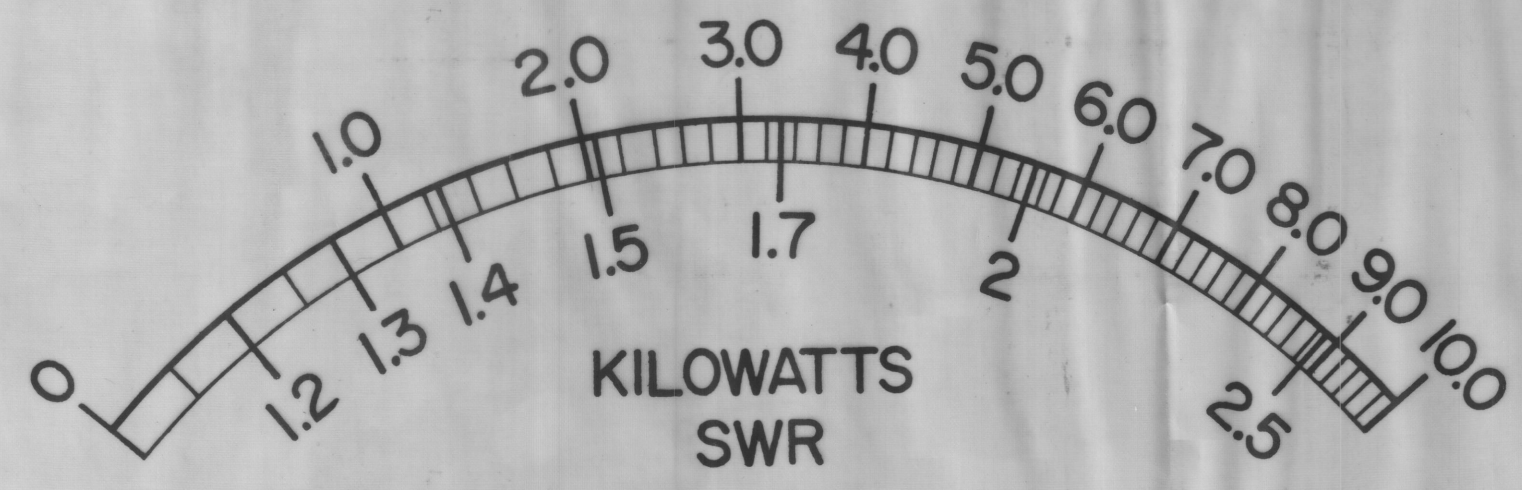


KILOWATTS
SWR

LETTERS
DETAIL "J"
(DO NOT SCALE)

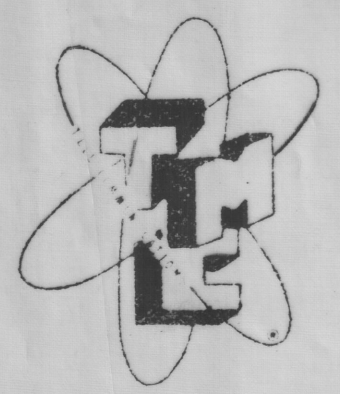
MAJOR CALIBRATION POINTS -
1.2, 1.3, 1.4, 1.5, 1.7, 2, 2.5

ALL OTHER NUMERALS, LETTERS, MAJOR AND MINOR CALIBRATION POINTS OTHER THAN NAMED ABOVE ARE TO BE IN BLACK.



SCALE = 2X

NOTE: THIS METER DIAL FACE HAS BEEN DRAWN TO SCALE (2X). THE ORIGINAL ART WORK SHOULD BE OBTAINED FROM TMC FOR PHOTOGRAPHING. METER MUST BE CALIBRATED TO CALIBRATION CURVE.



INSERT TMC INSIGNIA (NP-117) IN PLACE OF WORD SIMPSON, LOCATED ON FRONT GLASS OF METER. COLOR TO BE BLACK, INSIGNIA CENTERED.

SPECIFICATIONS

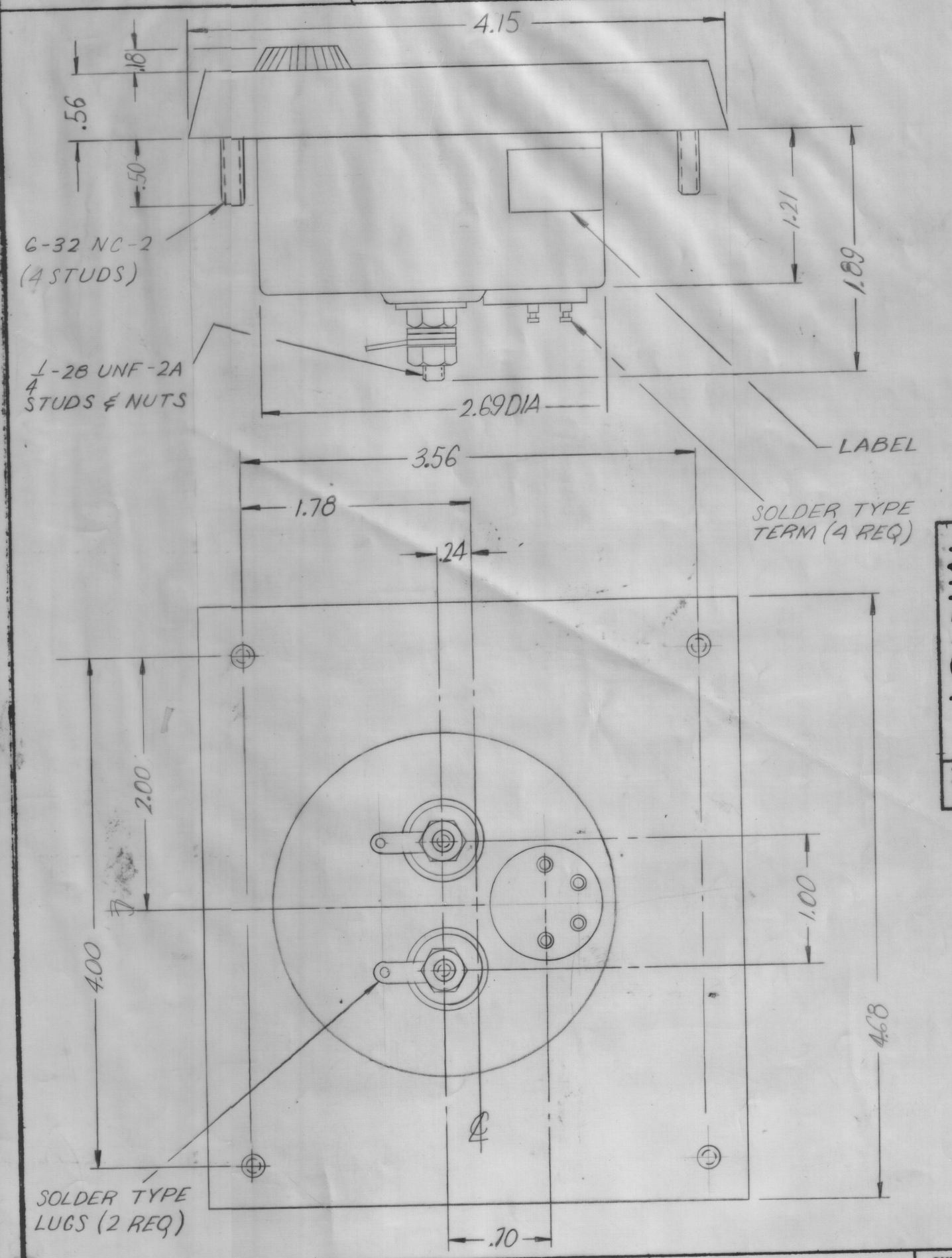
CASE - 4 1/2" RECTANGULAR, METAL DIE CAST.
FINISH - DULL, BLACK MATTE FINISH.
MOVEMENT - 0-100 MICROAMPS ± 2%
RESISTANCE - 1825Ω ± 2%
POINTER - KE - KNIFE EDGE
ACCURACY - 2% FULL SCALE.

CONTACTLESS TYPE - MODEL 3324 XA
DOUBLE CONTROL, SEPERATE METED AND CONTROL CIRCUITS.

THIS METER MUST BE PURCHASED AS A SET, WHICH INCLUDES TMC HW131 AND HW132, EXCEPT FOR SPARE PARTS.
HARDWARE (SUPPLIED BY MFG.) ② 1/4 LOCKWASHERS, ② 1/4 - 28 HEXAGON NUTS FOR TERMINALS. ④ 6-32 LOCKWASHERS, ④ 6-32 HEXAGON NUTS FOR MOUNTING.

1	TSTE-10K	AM126
QTY./UNIT	MODEL USED ON	ASSY. NO.
SCALE	CODE	S401-44

THE CONTENTS OF THIS DRAWING ARE THE EXCLUSIVE PROPERTY OF THE TECHNICAL MATERIEL CORP. ITS UNAUTHORIZED USE OR REPRODUCTION IN WHOLE OR IN PART IS STRICTLY FORBIDDEN.



REQ'D.	ITEM	PART NUMBER	DESCRIPTION	SYMBOL
F. BUDETTI LIST OF MATERIAL				
THE TECHNICAL MATERIEL CORP. MAMARONECK, NEW YORK				
TITLE: METER OUTPUT KW				
UNLESS OTHERWISE SPECIFIED DIMENSIONS ARE IN INCHES AND INCLUDE CHEMICALLY APPLIED OR PLATED FINISHES		DRAWN SG	DATE	FINAL APPROVAL
DECIMALS: X ± .05, XX ± .01, XXX ± .005		CHECKED	DATE	DATE
FRACTIONS: ± 1/64, ANGLES: ± 0° 30'		ELCC. REQ.	DATE	DATE
TOLERANCES		MECH. DEB.	DATE	DATE

MR187 A