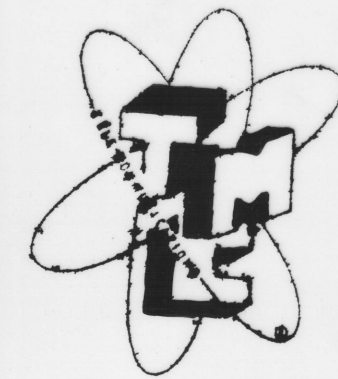
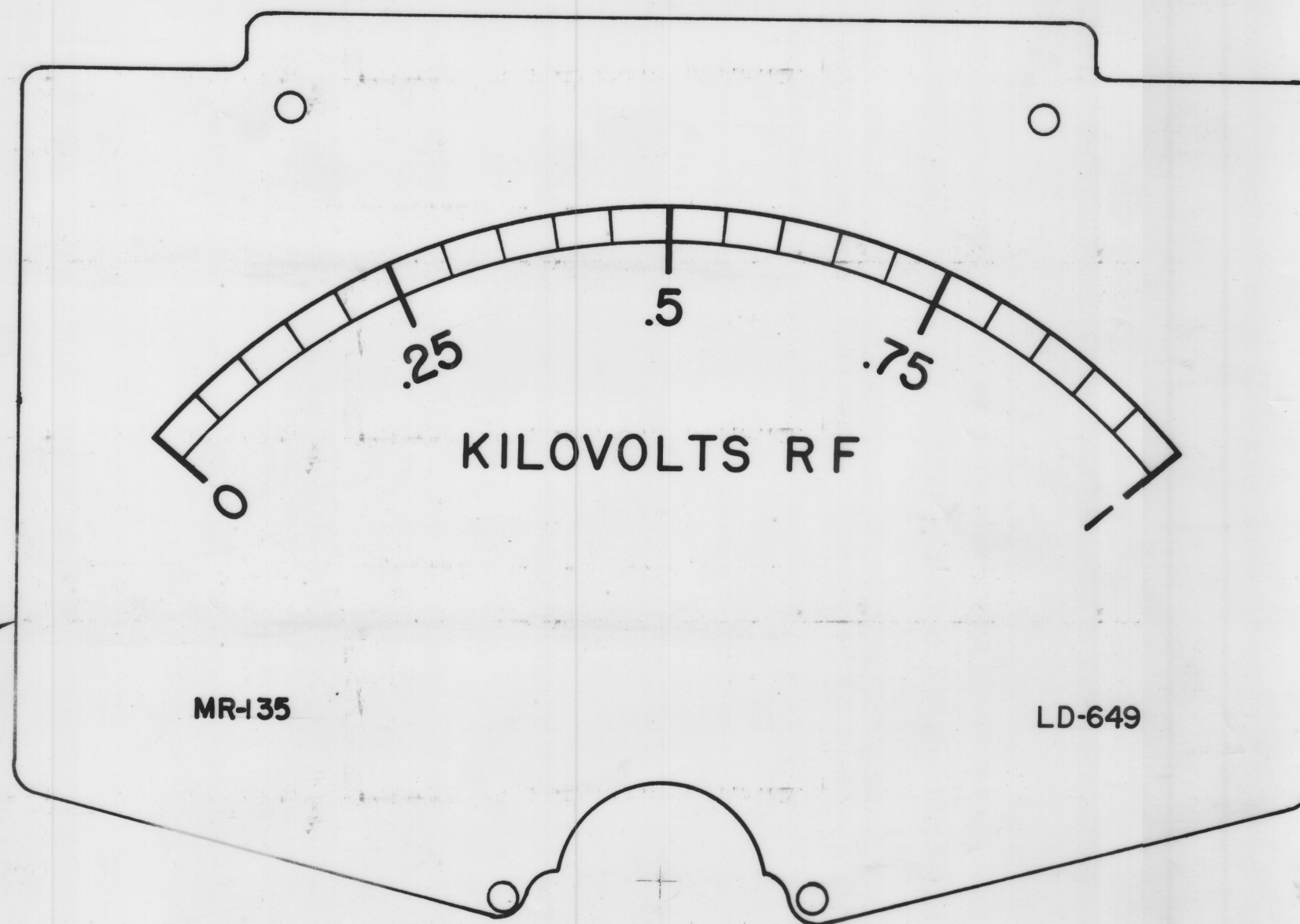
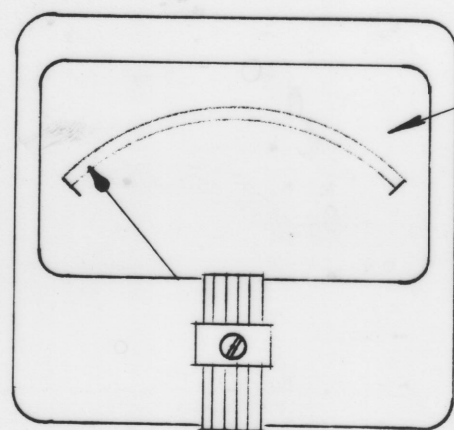
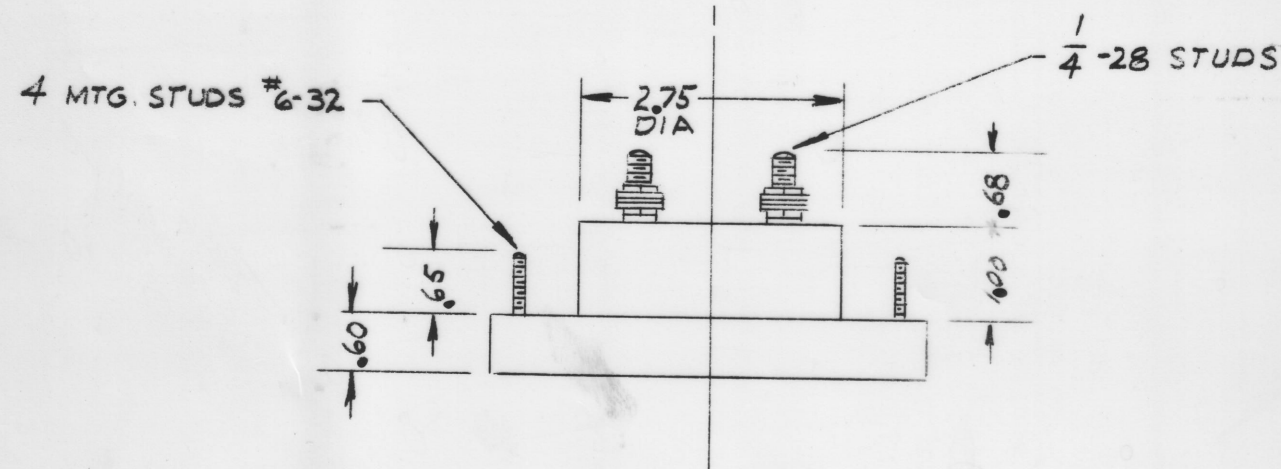
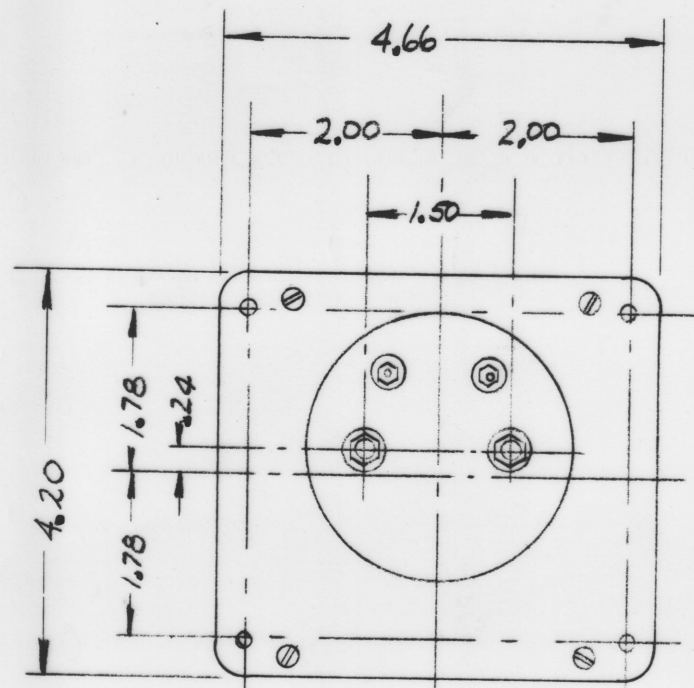


IF IT IS FOUND DESIRABLE TO CHANGE ANY TOLERANCE OR OTHER DETAIL SPECIFIED ON THIS DRAWING NOTIFY THE PURCHASER PROMPTLY.

MAXIMUM ALLOWABLE TOLERANCES HAVE BEEN DETERMINED AND DEVIATIONS WILL BE CAUSE FOR REJECTION. REMOVE ALL BURRS AND SHARP EDGES



"A"  
 INSERT TMC INSIGNIA  
 IMMEDIATELY BELOW WORD  
 "KILOVOLTS RF" CENTERED TO  
 BOTTOM.



SCALE 2X

MR-135

For Alternate Method of  
 Purchase & Assy See TMC  
 Spec. S-467.

**NOTES**

CASE - STANDARD COMMERCIAL RECTANGULAR 4 1/2.

FINISH - GLOSSY BLACK

MOVEMENT - 0-200 MICRO-AMPS

APPROX. RESISTANCE - 1000 OHMS

POINTER - SPADE TYPE

HARDWARE - TWO FLAT WASHERS AND TWO 1/4-28

HEX NUTS FOR TERMINALS

FOUR LOCKWASHERS AND FOUR #6-32 HEX NUTS

FOR MOUNTING SUPPLIED BY MFG.

**NOTICE TO PERSONS RECEIVING THIS DRAWING**

THE TECHNICAL MATERIEL CORPORATION claims  
 proprietary right in the material disclosed hereon.  
 This drawing is issued in confidence for engineering  
 information only and may not be reproduced or used  
 to manufacture any part shown hereon without per-  
 mission from THE TECHNICAL MATERIEL CORPORA-  
 TION to the user. This drawing is loaned for mutual  
 assistance and is subject to recall at any time.

Property of:

TECHNICAL MATERIEL CORPORATION  
 NEW YORK

ISSUE	ITEM	CHANGED FROM	DATE	CH. NO.	DRAFTS	CHECKER	ENG. APP.	
TOLERANCES								
ALL OTHERS		DEC. DIM. ± .015	DRILL, PUNCH, COMMERCIAL STOCK					SCALE: 6 1/2" = 1" (1:24)
		FRAC. DIM. ± 1/64	SIZES AND MANUFACTURERS					
		ANGULAR DIM. ±	TOLERANCES ARE NOT INCLUDED.					

REQ. PER UNIT	MODEL	PROJECT NO.	ASSY. NO.	DATE
1	GPT-40K			11-12-59
USED ON				

REQ. ITEM	PART NO.	DESCRIPTION	SYMBOL
THE TECHNICAL MATERIEL CORP. MAMARONECK, NEW YORK			
STOCK SIZE			
VOLTMETER, RF			
MATERIAL			
WEIGHT PER PC.			
DRIVE RF			
TYPE & TEMPER			
DRAWN		ELEC. DES. APP.	MECH. DES. APP.
CHECKED		FINAL APPROVAL	
HEAT TREAT. SPEC.			
FINISH & SPEC. NO.			
MR-135			