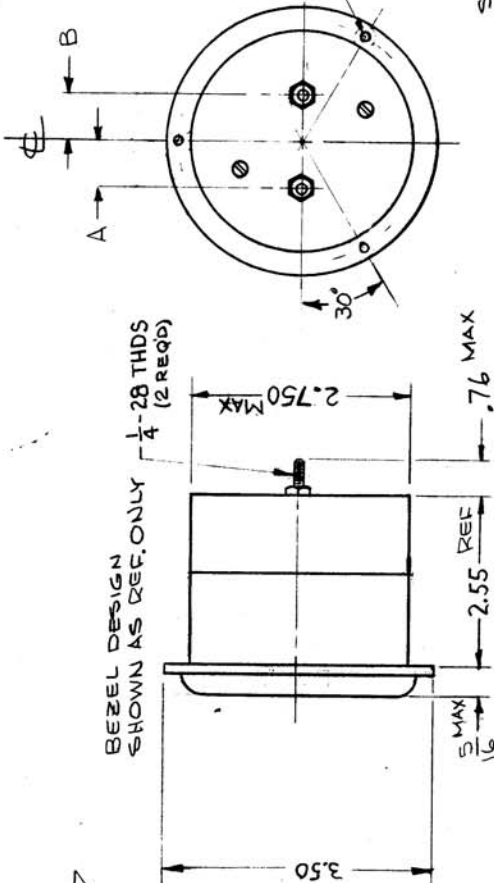
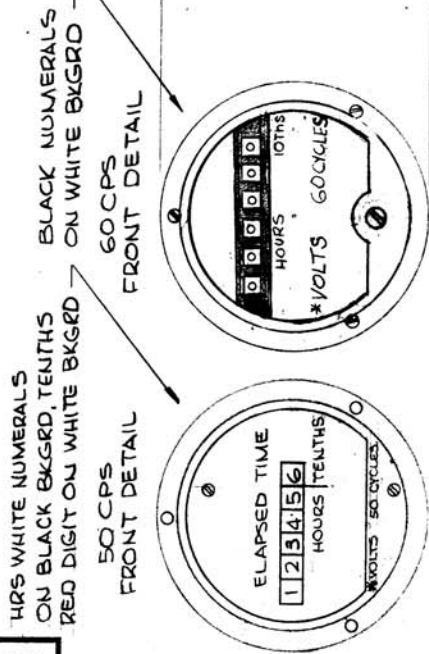


TMC PART NO. (SEE NOTE)	OPERATING VOLT. 50 OR 60 CYCLES AC
MR 125-1	110-125 (120)
MR 125-2	220-250 (240)

	A	B
50 CPS	.50	.50
60 CPS	.75	.75



* - INSERT NOMINAL OPERATING VOLTAGE

NOTICE TO PERSONS RECEIVING THIS DRAWING

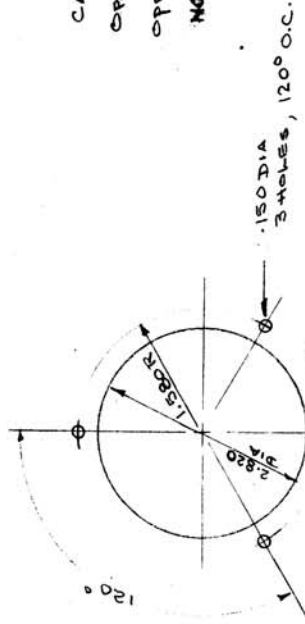
THE TECHNICAL MATERIEL CORPORATION claims proprietary right in the material disclosed hereon. This drawing is issued in confidence for engineering information only and may not be reproduced or used to manufacture anything shown herein without permission from THE TECHNICAL MATERIEL CORPORATION to the user. This drawing is loaned for assistance and is subject to recall at any time.

Property of:
THE TECHNICAL MATERIEL CORPORATION
MAMARONECK, NEW YORK

REGISTERS: 1/10 HOUR STEPS TO 99999.9

CASE TYPE: MOULDED BAKELITE
OPERATING TEMP.: -55°C TO +85°C.
OPERATING VOLTAGE: SEE CHART ABOVE.

NOTE: 15 50 CPS METERS ARE REQ. ADD SUFFIX -50 TO P/N. 18 MAY 25-2-56



MOUNTING DETAIL

ISSUE ITEM	CHANGED FROM	DATE	CH. NO.	DRAFTS	CHECKER	ENG. APP.
F	REVISED AND UPDATED	12-8-66	17421	440	J.P.B.	

TOLERANCES
DEC. DIM. ± .015
FRAC. DIM. ±
ANGULAR DIM. ±

MAXIMUM ALLOWABLE TOLERANCES HAVE BEEN DETERMINED AND ANY DEVIATIONS WILL BE CAUSE FOR REJECTION.
REMOVE ALL BURRS AND SHARP EDGES

REQ. ITEM	PART NO.	DESCRIPTION	SYMBOL
		THE TECHNICAL MATERIEL CORP. MAMARONECK, NEW YORK	
		METER, TIME TOTALIZING	
		MATERIAL	
		TYPE & TEMPER.	
		HEAT TREAT. SPEC.	
		FINISH & SPEC. N.	
		STOCK SIZE	
		DRAWN	
		CHECKED	
		DATE	
		PROJECT NO.	
		ASBY. NO.	
		USED ON	
		DATE	
		MR 125-2	
		60 CPS 5401-44 (5SET)	
		50 CPS 5401-444 (31 EXW)	
		APT-10K	
		MR 125-2	
		MR 125 F	