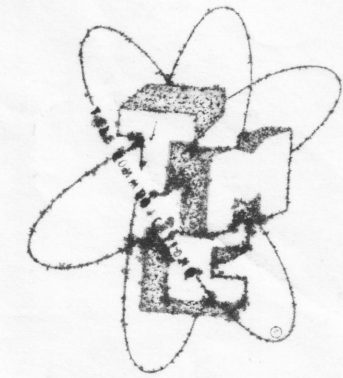


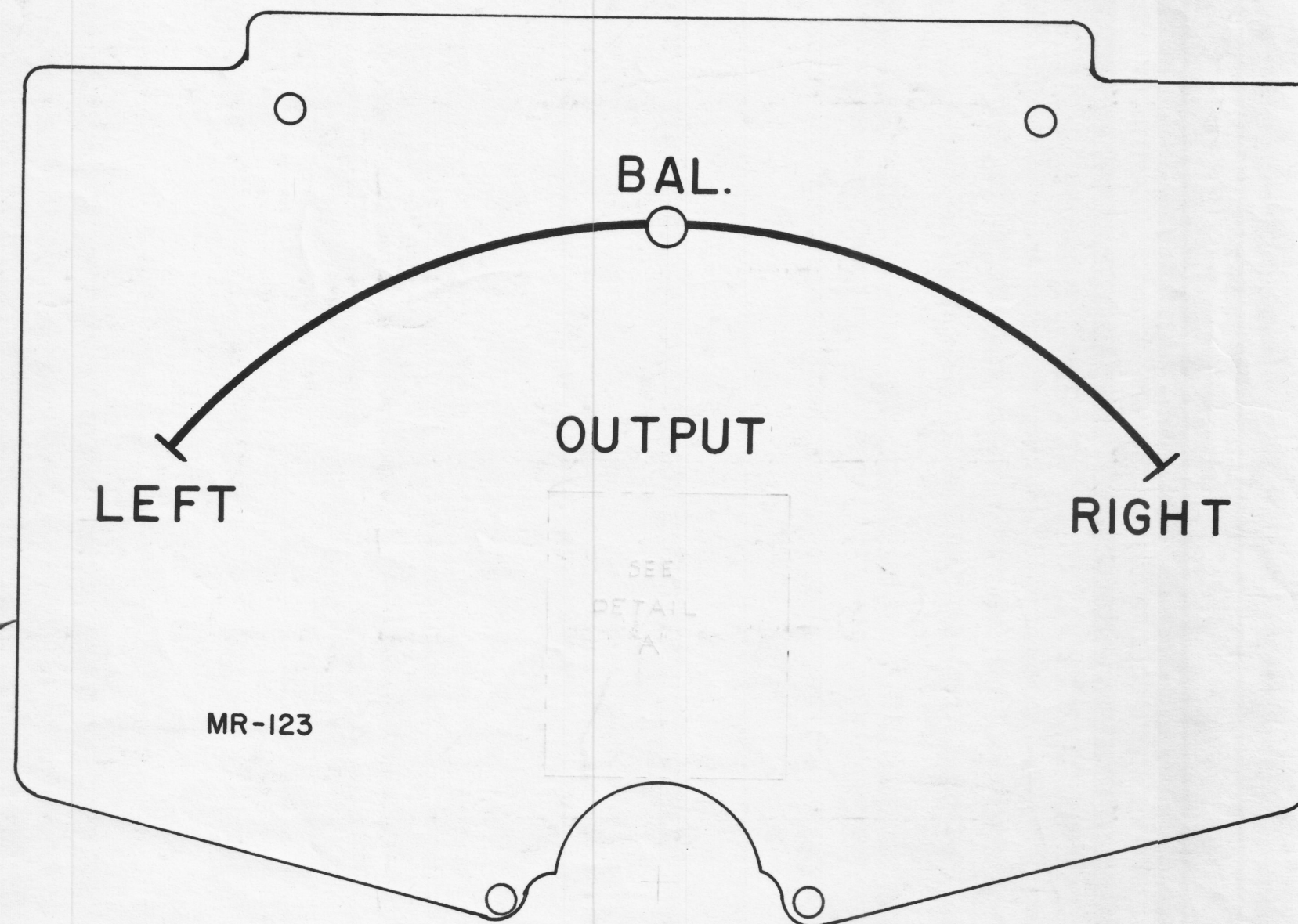
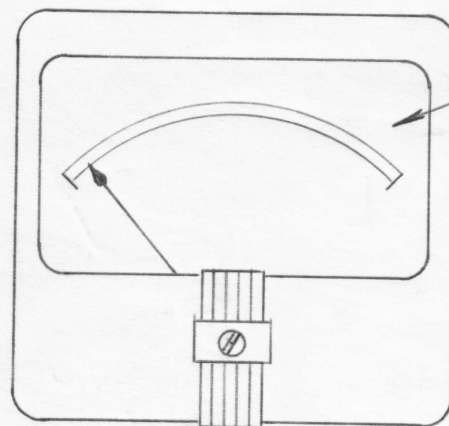
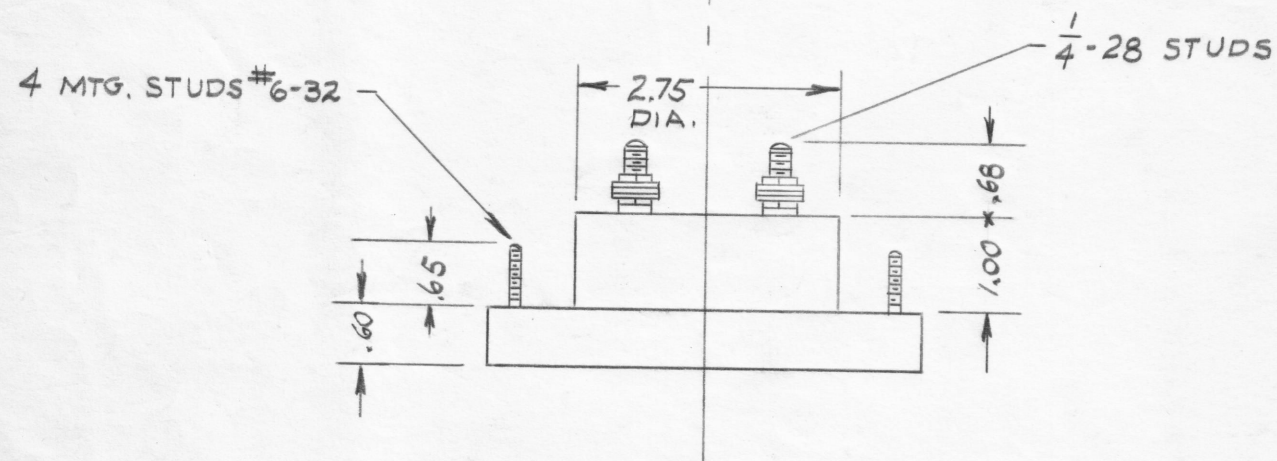
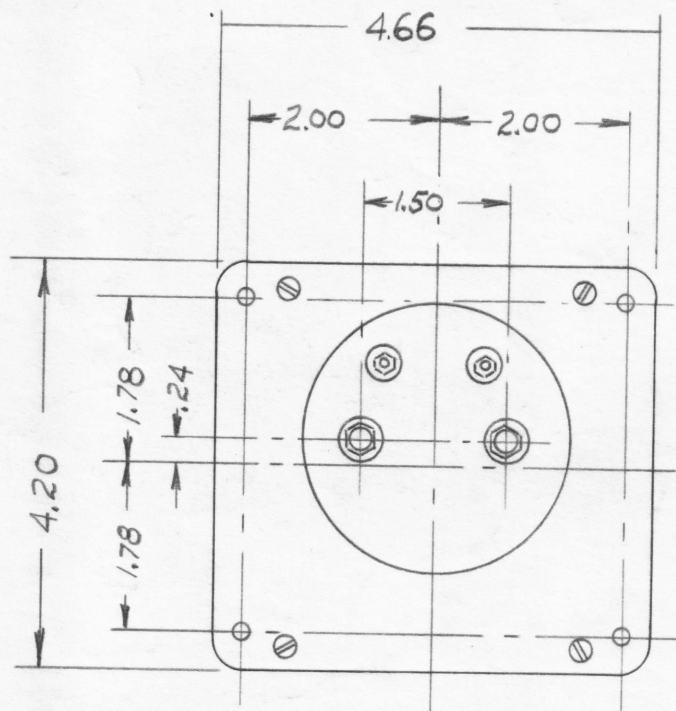
IF IT IS FOUND DESIRABLE TO CHANGE ANY TOLERANCE OR OTHER DETAIL SPECIFIED ON THIS DRAWING NOTIFY THE PURCHASER PROMPTLY.

MAXIMUM ALLOWABLE TOLERANCES HAVE BEEN DETERMINED AND DEVIATIONS WILL BE CAUSE FOR REJECTION. REMOVE ALL BURRS AND SHARP EDGES



"A"

INSERT TMC INSIGNIA IN SPACE DESIGNATED



SCALE 2X

MR-123

NOTES:

- CASE - STANDARD SIMPSON RECTANGULAR 4 1/2 CASE MODEL 29
- FINISH - GLOSSY BLACK
- MOVEMENT 100-0-100 MICROAMMETERS
- APPROX. RESISTANCE - 1000 OHMS
- POINTER - SPADE TYPE
- HARDWARE - TWO FLAT WASHERS AND TWO 1/4 - 28 HEX NUTS FOR TERMINALS.
- FOUR LOCKWASHERS AND FOUR 6-32 HEX NUTS FOR MOUNTING SUPPLIED BY MFG.

REF. SIMPSON CAT. NO. 17 MODEL 29

REQ. ITEM	PART NO.	DESCRIPTION	SYMBOL
STOCK SIZE		THE TECHNICAL MATERIEL CORP. MAMARONECK, NEW YORK	
MATERIAL		METER, FINAL OUTPUT BALANCE	
TYPE & TEMPER		70BULLO	F.F.G.
HEAT TREAT. SPEC.		DRAWN	ELEC. DES. APP. MECH. DES. APP.
FINISH & SPEC. NO.		CHECKED	FINAL APPROVAL
		MR-123	

ISSUE	ITEM	CHANGED FROM	DATE	CN. NO.	DRAFTS	CHECKER	ENG. APP.
TOLERANCES <td colspan="6">SCALE:</td>		SCALE:					
ALL	DEC. DIM.	± .015	DRILL, PUNCH, COMMERCIAL STOCK				
OTHERS	FRAC. DIM.	± 1/64	SIZES AND MANUFACTURERS				
	ANGULAR DIM.	±	TOLERANCES ARE NOT INCLUDED.				

1	GPT-5000			10-31-58
REQ PER UNIT	MODEL	PROJECT NO.	ASS'Y. NO.	DATE