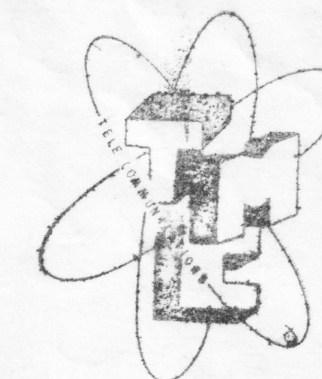


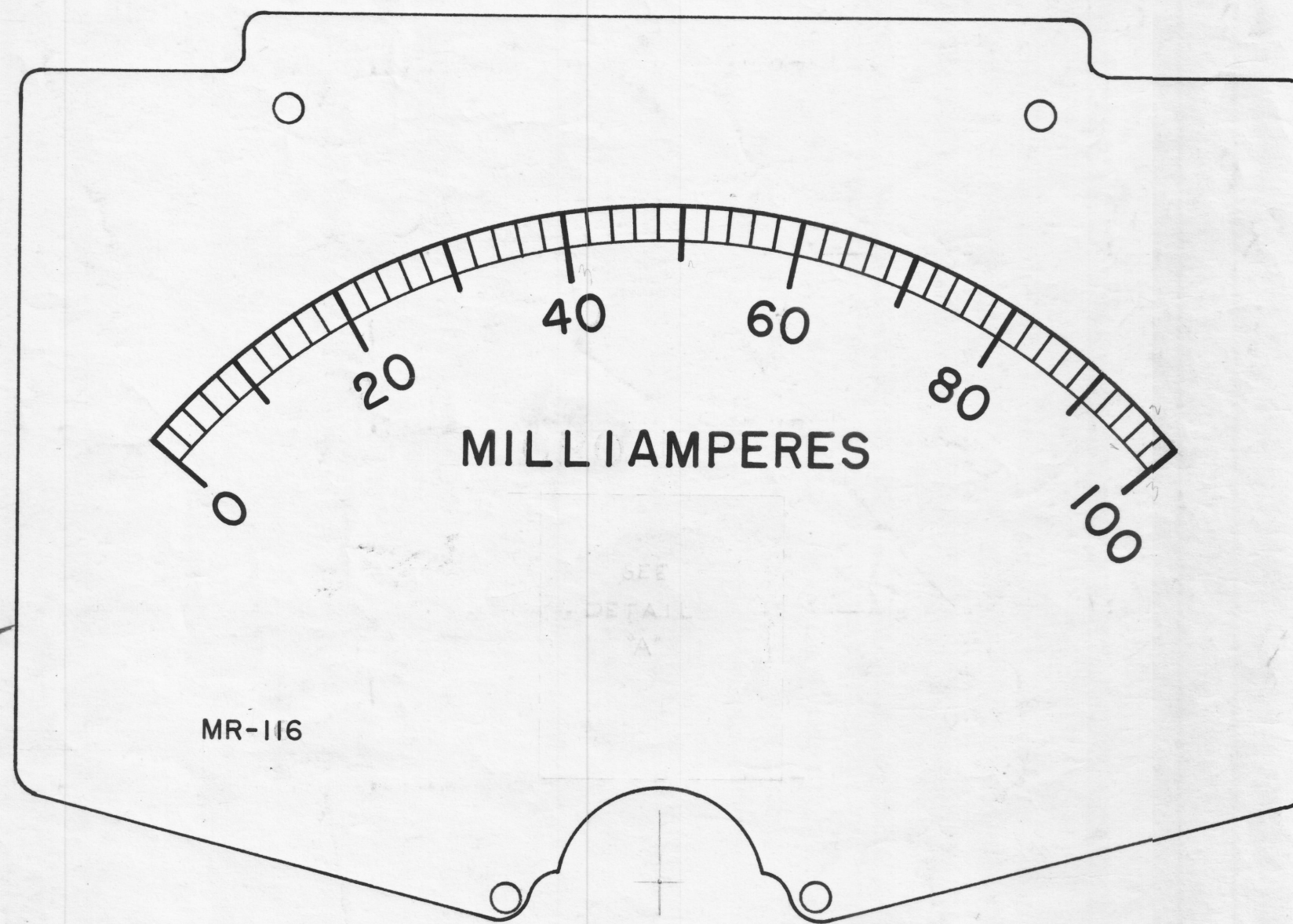
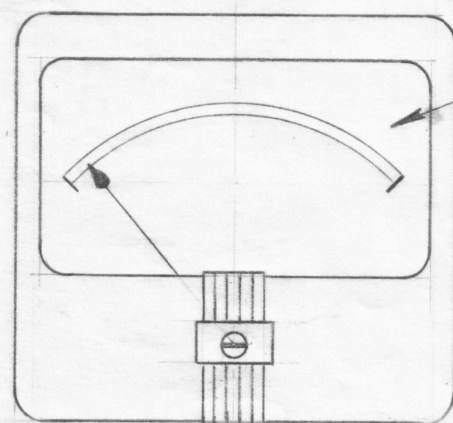
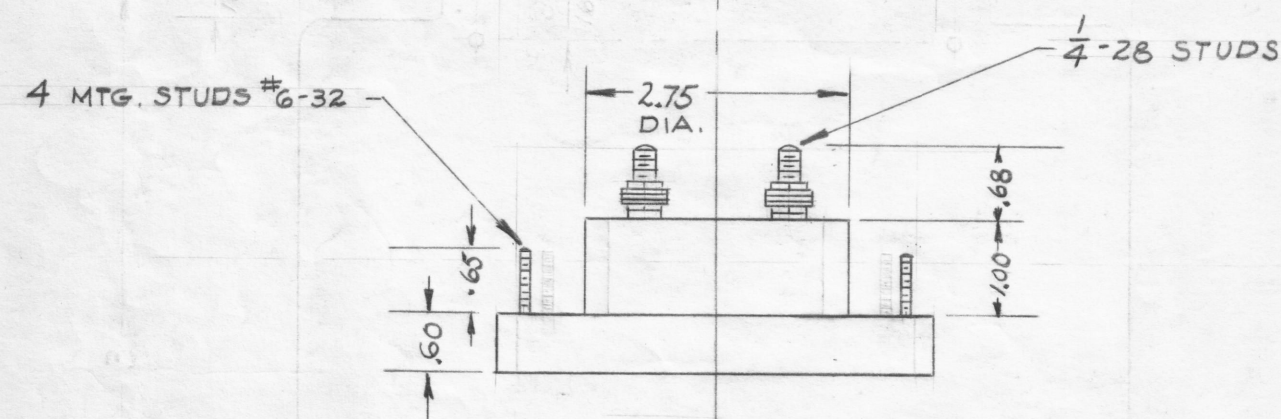
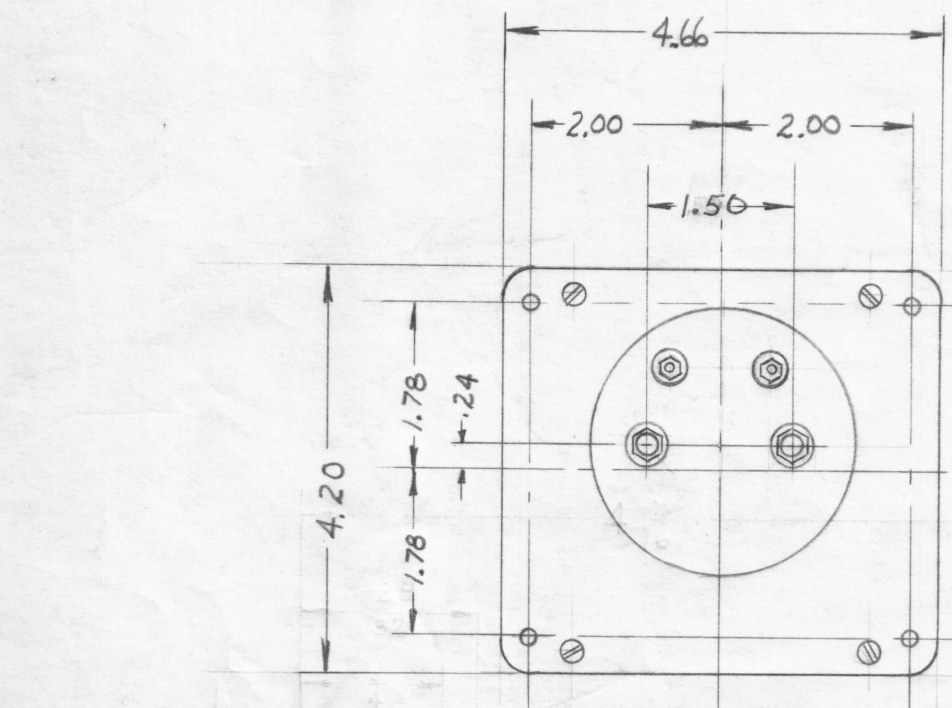
IF IT IS FOUND DESIRABLE TO CHANGE ANY TOLERANCE OR OTHER DETAIL SPECIFIED ON THIS DRAWING NOTIFY THE PURCHASER PROMPTLY.

MAXIMUM ALLOWABLE TOLERANCES HAVE BEEN DETERMINED AND DEVIATIONS WILL BE CAUSE FOR REJECTION. REMOVE ALL BURRS AND SHARP EDGES



"A"

INSERT TMC INSIGNIA IMMEDIATELY BELOW WORD MILLIAMPERES CENTERED TO BOTTOM



MR-116

**NOTES:**

- CASE - STANDARD COMMERCIAL 4 1/2" RECTANGULAR, MODEL 29
- FINISH - GLOSSY BLACK
- MOVEMENT - 0-100 MILLI-AMP
- APPROX. RESISTANCE - 1.5 OHMS
- POINTER - SPADE TYPE
- HARDWARE - TWO FLAT WASHERS AND TWO 1/4-28 HEX NUTS FOR TERMINALS.
- FOUR LOCKWASHERS AND FOUR 6-32 HEX NUTS FOR MOUNTING SUPPLIED BY MFG.

SEE SIMPSON CAT NO. 17 MODEL 29

ISSUE	ITEM	CHANGED FROM	DATE	CN. NO.	DRAFTS	CHECKER	ENG. APP.
TOLERANCES			SCALE: 5-401-44 (17-29)				
ALL OTHERS	DEC. DIM. ± .015	FRAC. DIM. ± 1/64	DRILL, PUNCH, COMMERCIAL STOCK SIZES AND MANUFACTURERS TOLERANCES ARE NOT INCLUDED.				

1	GPT-10K	AX-173		10-31-58
REQ PER UNIT	MODEL	PROJECT NO.	ASSY. NO.	DATE
USED ON				

REQ. ITEM	PART NO.	DESCRIPTION	SYMBOL
<b>THE TECHNICAL MATERIEL CORP.</b> MAMARONECK, NEW YORK			
STOCK SIZE			
MILLIAMETER			
MATERIAL		WEIGHT PER PC.	
TYPE & TEMPER		DRAWN	
HEAT TREAT. SPEC.		CHECKED	
FINISH & SPEC. NO.		FINAL APPROVAL	
		MR-116	