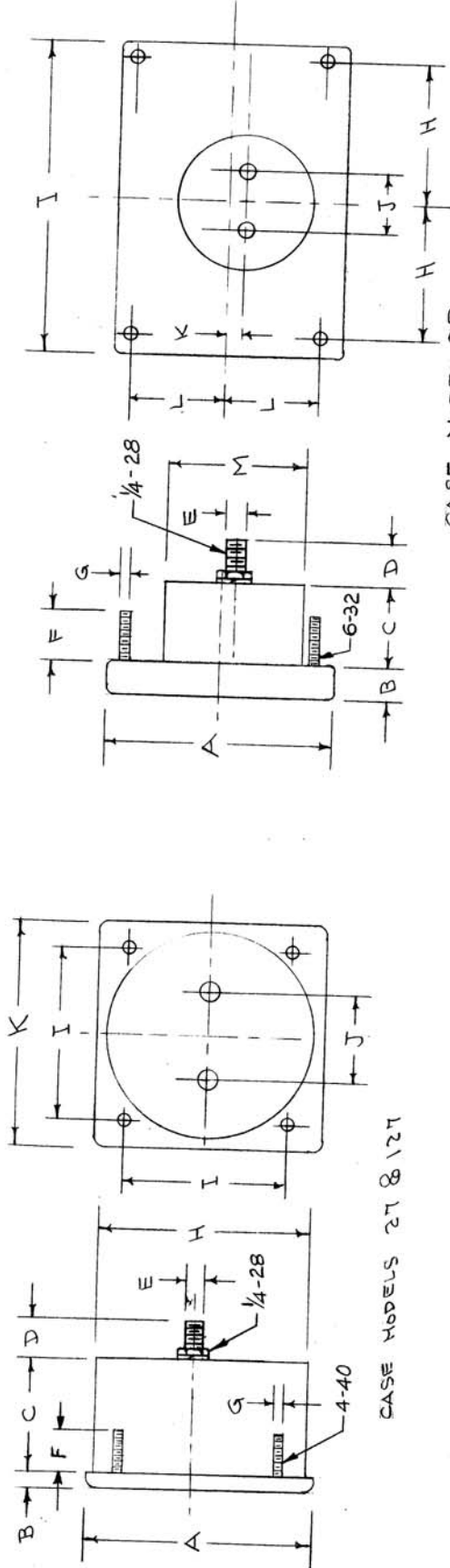


STANDARD DRAWING

MODEL	A	B	C	D	E	F	G	H	I	J	K	L	M
27	3.12	.20	1.36	.68	.25	.53	.11	2.73	2.25	1.50	3.00		
29	4.20	.60	1.00	.68	.25	.65	.14	2.00	4.66	1.50	.24	1.78	2.75
127	2.37	.20	1.45	.68	.25	.54	.11	2.17	1.87	1.00	2.37		



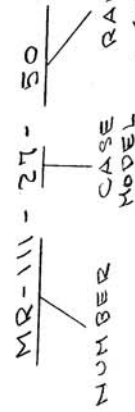
CASE MODELS 27 & 127

CASE MODEL 29

MICROAMPERE RANGE
0-25
0-50
0-100
0-200
0-500

ACCURACY AT FULL SCALE $\pm 2\%$
 CALIBRATED FOR NON-MAGNETIC PANEL
 CASE FRONT BLACK MATTE FINISH.
 SPADE TYPE POINTER

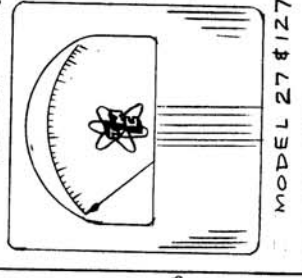
TYPE DESIGNATION TO BE IN FOLLOWING FORM.



NOTE: HARDWARE SUPPLIED BY MFR. FOR EACH MODEL:

- 4-MOUNTING NUTS & FLAT WASHERS
- 4-TERMINAL NUTS
- 2-TERMINAL SPLIT LOCKWASHERS
- 2-TERMINAL FLAT WASHERS

NOTE: TMC INSIGNIA TO BE PRINTED ON DIAL FACE AS SHOWN (REF-TMC DWG. NP-117)



ISSUE/ITEM	CHANGED FROM	DATE	CH. NO.	DRAFTS	CHECKER	ENG. APP.
C 1	1/4-28, 6-32, 4-40 NUTS & LOCKWASHERS ADDED TO PICTORIAL HARDWARE NOTE ADDED	1/23/64		AM	@	R
B 2	REMOVED NUTS & WASHERS 7-12-63	9563	AK		MF	RB
A 1	TMC INSTANTA INFO. ADDED	10/15/54	1413	16		AM

TOLERANCES
 DEC. DIM. \pm
 FRAC. DIM. \pm
 ANGULAR DIM. \pm

MAXIMUM ALLOWABLE TOLERANCES HAVE BEEN DETERMINED AND ANY DEVIATIONS WILL BE CAUGHT IN INSPECTION. REMOVE ALL BURRS AND SHARP EDGES

REQ. ITEM	PART NO.	DESCRIPTION	SYMBOL
		THE TECHNICAL MATERIEL CORP. MAMARONECK, NEW YORK	
		MICROAMPERE	
		TYPE & TEMPER. HEAT TREAT. SPEC.	
		MATERIAL	
		FINISH & SPEC. NO.	
		DRAWN	
		CHECKED	
		FINAL APPROVAL	

MR-111 C