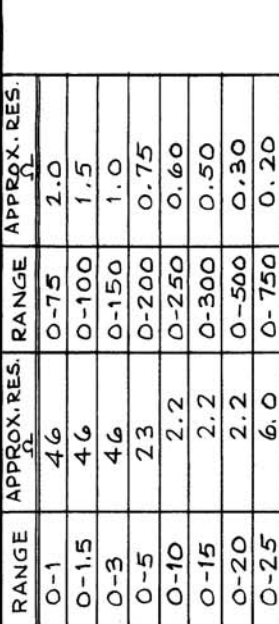


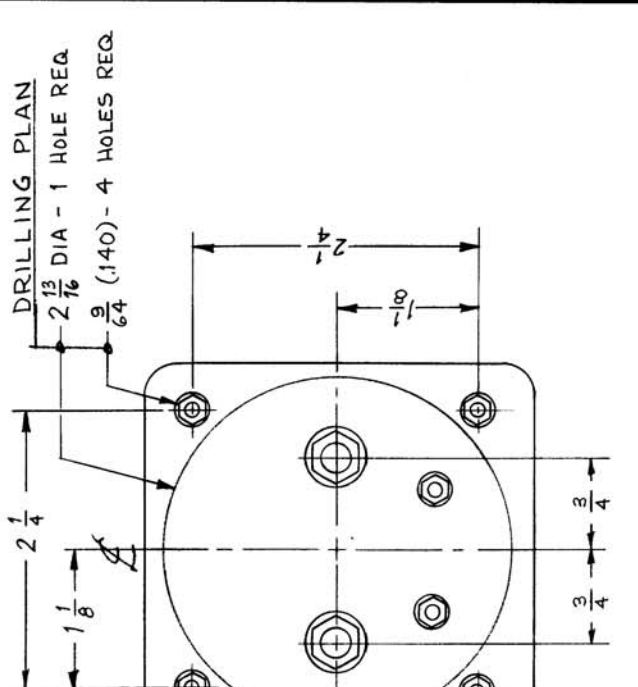
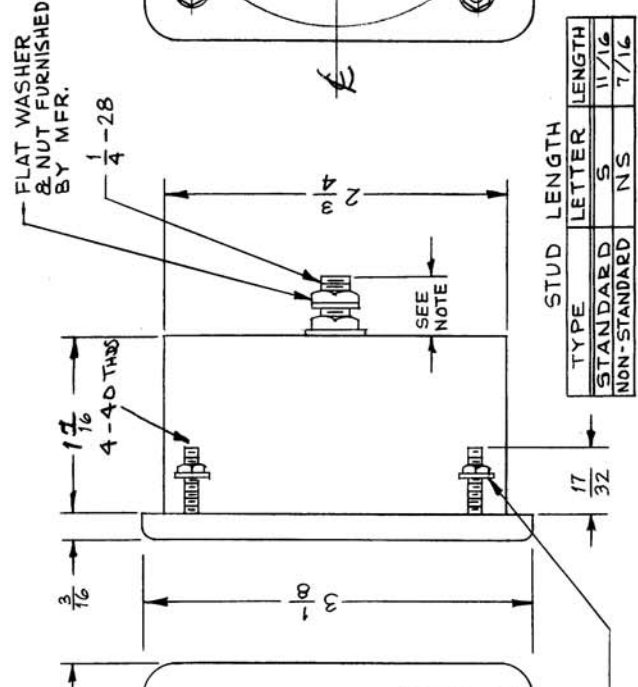
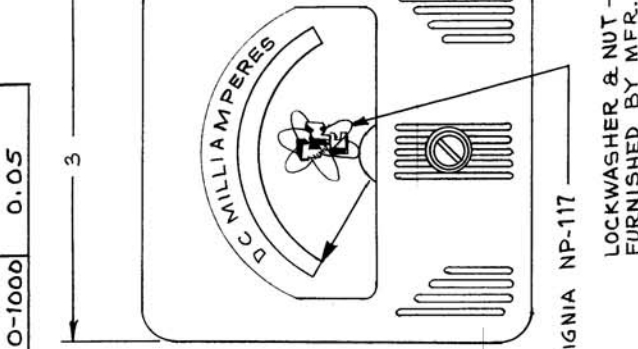
STANDARD DRAWING

REVISIONS		DATE	E.M.N. NO.	DRAFT	CHKD	APPD
DESCRIPTION		7-17-63	9259	MP	MP	MP
REF CODE & INSIGNIA ADDED						
RES. CHART ADDED & SPECS						
REBROWN W/D CHANGE LAST REV. W/AS		7-26-63	#			

RANGE	APPROX. RES.	RANGE	APPROX. RES.
0-1	4.6	0-75	2.0
0-1.5	4.6	0-100	1.5
0-3	4.6	0-150	1.0
0-5	2.3	0-200	0.75
0-10	2.2	0-250	0.60
0-15	2.2	0-300	0.50
0-20	2.2	0-500	0.30
0-25	6.0	0-750	0.20
0-50	3.0	0-1000	0.05



- SPECS:**
- 1- CASE:- MOLDED BLACK PHENOLIC METER FRONT MATTE FINISH
 - 2- ACCURACY AT FULL SCALE $\pm 2\%$
 - 3- CALIBRATED FOR NON-MAGNETIC PANEL. SPADE TYPE POINTER



STUD LENGTH	LETTER	LENGTH
STANDARD	S	11/16
NON-STANDARD	NS	7/16

NOTE:
INDICATE POSITIVE POLE NEAR THE APPROPRIATE TERMINAL.

TYPE DESIGNATION TO BE IN FOLLOWING FORM
MR - 110 - 150 - S
 TYPE NUMBER RANGE (MA) STUD LENGTH (TOP END SINCE LOWER END IS ALWAYS ZERO)
 R INDICATES DECIMAL POINT
 EXAMPLE - 1125 = 1.5

RECD.	ITEM	PART NUMBER	DESCRIPTION	SYMBOL
LIST OF MATERIAL				
MATERIAL				
FINISH				
UNLESS OTHERWISE SPECIFIED DIMENSIONS ARE IN INCHES AND INCLUDE CHEMICALLY APPLIED OR PLATED FINISHES				
DECIMALS .X.X ± .05 FRACTIONS 1/4 ± 1/4 1/8 ± 1/8 1/16 ± 1/16				
TOLERANCES ± .01 30'				
QTY./UNIT	SCALE	MODEL USED ON	CODE	ASBY. NO.
			S401-44	
THE CONTENTS OF THIS DRAWING ARE THE EXCLUSIVE PROPERTY OF THE TECHNICAL MATERIEL CORP. ITS UNAUTHORIZED USE OR REPRODUCTION IN WHOLE OR IN PART IS STRICTLY FORBIDDEN.				
NOTES				

THE TECHNICAL MATERIEL CORP.
 MAMARONECK, NEW YORK
 TITLE DC MILLIAMMETER

DATE	DATE	DATE	DATE
9-12-55	12-155		
FINAL APPROVAL			
A.J.J.			
DATE	DATE	DATE	DATE
MR-110			
SHEET			
REV. LTR.			