

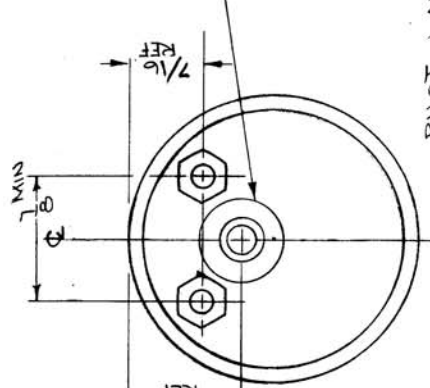
STANDARD DRAWING

IF IT IS FOUND DESIRABLE TO CHANGE ANY TOLERANCE OR OTHER DETAIL SPECIFIED ON THIS DRAWING NOTIFY THE PURCHASER PROMPTLY.
 MAXIMUM ALLOWABLE TOLERANCES HAVE BEEN DETERMINED AND DEVIATIONS WILL BE CAUSE FOR REJECTION. REMOVE ALL BURRS AND SHARP EDGES

MR-107

POINTER - WHITE
 ELECTRICAL SPECS
 CURRENT - 1 MA ± 2% FULL SCALE
 RESISTANCE - 125 Ω ± 10%
 RESPONSE TIME - 2 SEC.
 DAMPING FACTOR - 2.5

PLUG BUTTON

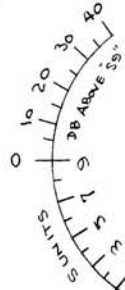


PILOT LAMP SOCKET ASSEMBLY
 NOT TO BE SUPPLIED BY METER MANUFACTURER
 (USE TMC SOCKET TS-127).

- 10-32 THD STUD -2 REQ
- 10-32 HEX NUT, 5/16 x 1/8 - 4 REQ
- SPLIT LOCKWASHER - 2 REQ

TMC No'S
 NTH103ZBN10 - NUT, HEX
 LWS10MRN - LOCKWASHER, SPLIT

THIS SECTION ILLUMINATED
 THIS SECTION ILLUMINATED
 THIS SECTION ILLUMINATED



BLACK BACKGROUND

FOR USE TO PERSONS RECEIVING THIS DRAWING

THE TECHNICAL MATERIEL CORPORATION claims proprietary right in the material disclosed hereon. This drawing is issued in confidence for engineering information only and may not be reproduced or used to manufacture anything shown hereon without permission from THE TECHNICAL MATERIEL CORPORATION to the user. This drawing is loaned for mutual assistance and is subject to recall at any time.

Property of:

THE TECHNICAL MATERIEL CORPORATION
 MAMARONECK, NEW YORK

REF: S40A-54
 TYPE 52 RM (DIAL FACE 52 RMS)

REQ. ITEM	PART NO.	DESCRIPTION	SYMBOL
#	#	THE TECHNICAL MATERIEL CORP. MAMARONECK, NEW YORK	
MATERIAL	WEIGHT PER PC.	METER, "S" TYPE G.P.R.	
TYPE & TEMPER		CON. 4-7-54 H.H.	
HEAT TREAT. SPEC.		DRAWN G.T.O.	
FINISH & SPEC. NO.		CHECKED G.T.O.	
		ELEC. DES. APP. MECH. DES. APP.	
		FINAL APPROVAL	
		MR-107	H.

ISSUE ITEM	CHANGED FROM	DATE	CH. NO.	DRAFTS	CHECKER	ENG. APP.
H	ELEC. DES. ADDED	4-12-54	16078	W.H.		
G	STUDS & NUTS CLARIFIED	5-22-54	9063			
	THIS DRAWING IS TO BE USED					

TOLERANCES
 DEC. DIM. ±
 FRAC. DIM. ±
 ALL OTHERS AN ULAR DIM. ±

DRILL, PUNCH, COMMERCIAL STOCK
 SIZES AND MANUFACTURERS
 TOLERANCES ARE NOT INCLUDED.

1	G.P.R.	257	PROJECT NO.	A-7-54	DATE
	MODEL		ABBY. NO.		
			USED ON		