

IF IT IS FOUND DESIRABLE TO CHANGE ANY TOLERANCE OR OTHER DETAIL SPECIFIED ON THIS DRAWING NOTIFY THE PURCHASER PROMPTLY.

# STANDARD DRAWING

MP-102



MAXIMUM ALLOWABLE TOLERANCES HAVE BEEN DETERMINED AND DEVIATIONS WILL BE CAUSE FOR REJECTION. REMOVE ALL BURRS AND SHARP EDGES

USED ON

MODEL

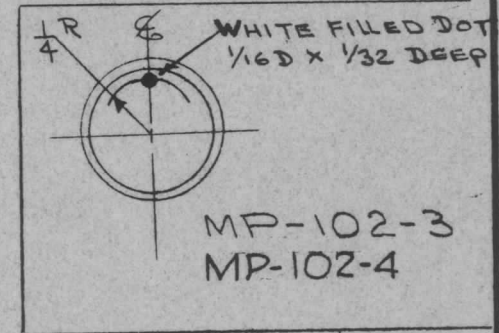
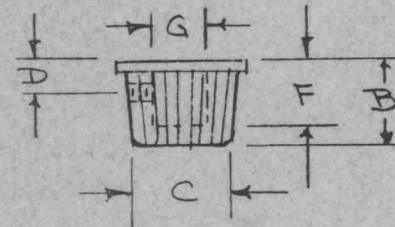
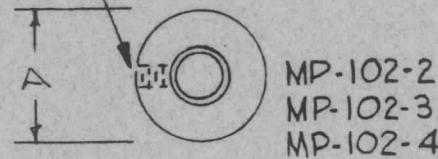
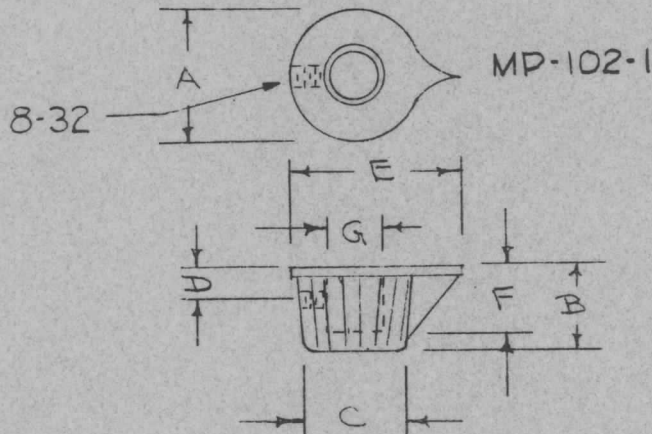
PROJECT NO.

ASS'Y. NO.

DATE

TMC NO.	CAT. NO.	A	B	C	D	E	F	G
MP-102-1	1400	1/16	13/32	5/8	3/16	29/32	11/32	1/4
MP-102-2	1450AJ	1/16	13/32	5/8	3/16		11/32	1/4
MP-102-3 See Dot Detail	1450G MODIFY AS SHOWN	1/16	13/32	5/8	3/16		11/32	.130
MP-102-4 SEE DOT DETAIL	1450AJ With Dot	1/16	13/32	5/8	3/16		11/32	1/4

DIMENSIONS FOR REFERENCE ONLY.



NOTE: COLOR - BLACK  
INSERT - BRASS

EACH KNOB SHALL BE DELIVERED WITH ONE ALLEN HEAD TYPE, CADMIUM PLATED, CUP POINT SET SCREW, INSTALLED.

REF HARRY DAVIS Moulding CO

REQ.	ITEM	PART NO.	DESCRIPTION	SYMBOL
			THE TECHNICAL MATERIEL CORP. MAMARONECK, NEW YORK	
		STOCK SIZE	KNOB, INSTRUMENT TYPE, ROUND	
		MATERIAL	SD 8/7/56	
		WEIGHT PER PC.		
		TYPE & TEMPER		
		HEAT TREAT, SPEC.		
		FINISH & SPEC. NO.		

C	1	MP-102-4 Added	12-13-61	6055	L.H.			
B	1	DOT DETAIL ADDED	6/12/57	2	M.H.			
		REDRAWN - NO CHANGE	8/7/56		C.S.			
ISSUE	ITEM	CHANGED FROM	DATE	CN. NO.	DRAFTS	CHECKER	ENG. APP.	
TOLERANCES			SCALE					
ALL OTHERS	DEC. DIM. ± FRAC. DIM. ± ANGULAR DIM. ±		DRILL, PUNCH, COMMERCIAL STOCK SIZES AND MANUFACTURERS TOLERANCES ARE NOT INCLUDED.					

MP-102



IF IT IS FOUND DESIRABLE TO CHANGE ANY TOLERANCE OR OTHER DETAIL SPECIFIED ON THIS DRAWING NOTIFY THE PURCHASER PROMPTLY.

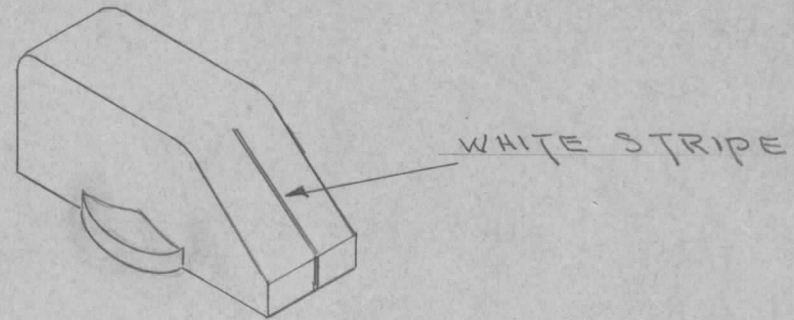
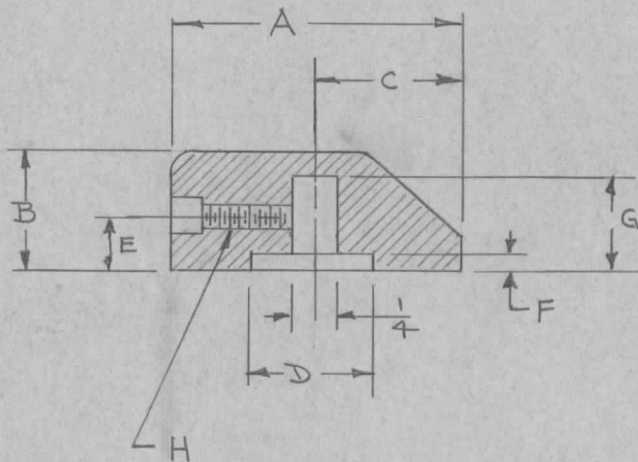
MP-103

MAXIMUM ALLOWABLE TOLERANCES HAVE BEEN DETERMINED AND DEVIATIONS WILL BE CAUSE FOR REJECTION. REMOVE ALL BURRS AND SHARP EDGES

USED ON

MODEL	PROJECT NO.	ASS'Y. NO.	DATE
TAC-1	132		7-30-53

TMC NO	KURZ-KASCH PART NO	A	B	C	D	E	F	G	H
MP-103-1	S-626-1L	1 1/2	5/8	3/4	5/8	9/32	3/32	1/2	8-32



NOTE:

Dimensions For REF. Only.

REF: KURZ-KASCH, INC.

REQ.	ITEM	PART NO.	DESCRIPTION	SYMBOL
			THE TECHNICAL MATERIEL CORP. MAMARONECK. NEW YORK	
		STOCK SIZE		
			KNOB, POINTER	
		MATERIAL	WEIGHT PER PC.	
		TYPE & TEMPER		
		HEAT TREAT. SPEC.		
		FINISH & SPEC. NO.		

ISSUE	ITEM	CHANGED FROM	DATE	CN. NO.	DRAFTS	CHECKER	ENG. APP.

TOLERANCES	SCALE
ALL OTHERS DEC. DIM. ± FRAC. DIM. ± ANGULAR DIM. ±	DRILL, PUNCH, COMMERCIAL STOCK SIZES AND MANUFACTURERS TOLERANCES ARE NOT INCLUDED.

DATE 7-30-53  
DRAWN [Signature]  
CHECKED [Signature]  
FINAL APPROVAL [Signature]  
MP-103

IF IT IS FOUND DESIRABLE TO CHANGE ANY TOLERANCE OR OTHER DETAIL SPECIFIED ON THIS DRAWING NOTIFY THE PURCHASER PROMPTLY.

MP-104

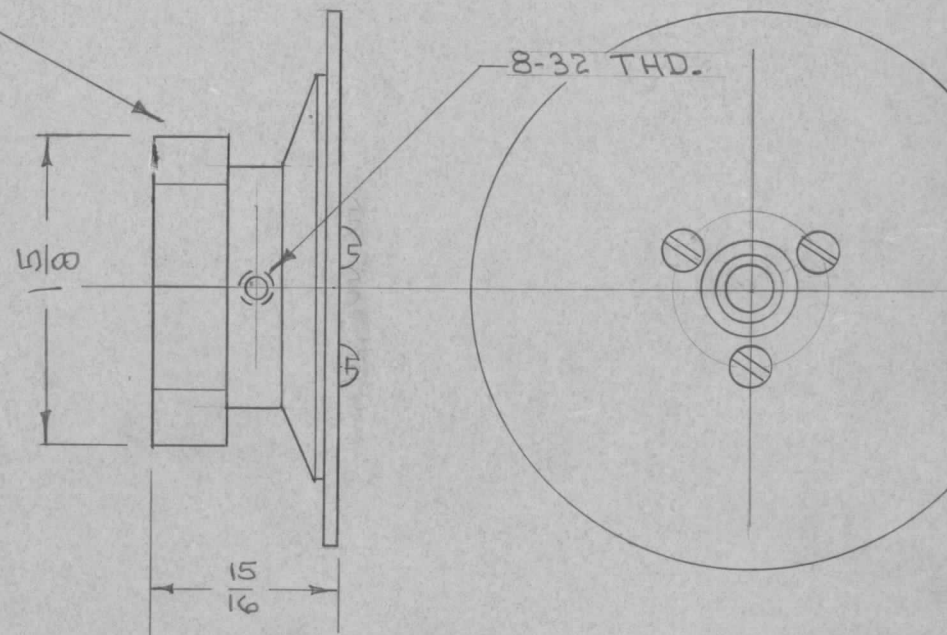
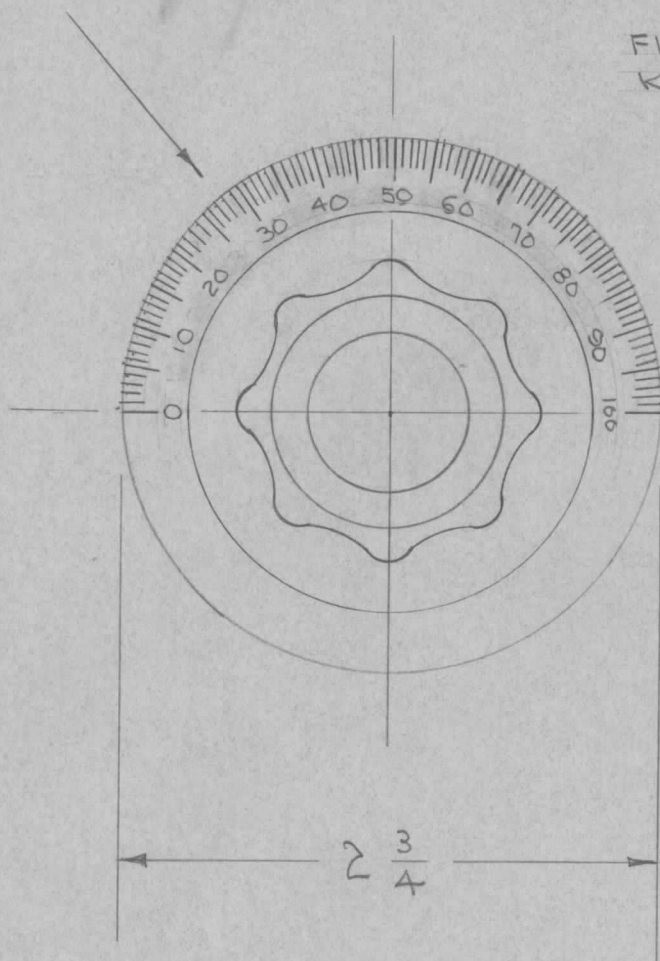
MAXIMUM ALLOWABLE TOLERANCES HAVE BEEN DETERMINED AND DEVIATIONS WILL BE CAUSE FOR REJECTION. REMOVE ALL BURRS AND SHARP EDGES

USED ON

MODEL	PROJECT NO.	ASS'Y. NO.	DATE
TAC-1	132		9-2-53

DIAL TO BE ETCHO-ENGRAVED. BLACK NUMERALS AND CALIBRATIONS

FINGER GRIP BLACK FLANGE KNOB WITH SKIRT



REQ.	ITEM	PART NO.	DESCRIPTION	SYMBOL
			<b>THE TECHNICAL MATERIEL CORP.</b> MAMARONECK. NEW YORK	
STOCK SIZE			DIAL KNOB	
MATERIAL		WEIGHT PER PC.		
TYPE & TEMPER			C.D.D. 9-2-53	
HEAT TREAT. SPEC.			DRAWN: <i>J.A.D.</i> ELEC. DES. APP. MECH. DES. APP.	
FINISH & SPEC. NO.			CHECKED: <i>J.A.D.</i> FINAL APPROVAL: <i>[Signature]</i>	
			MP-104	

ISSUE	ITEM	CHANGED FROM	DATE	CN. NO.	DRAFTS	CHECKER	ENG. APP.
TOLERANCES			SCALE				
ALL OTHERS	DEC. DIM. ±	FRAC. DIM. ±	DRILL, PUNCH, COMMERCIAL STOCK SIZES AND MANUFACTURERS TOLERANCES ARE NOT INCLUDED.				
	ANGULAR DIM. ±						



IF IT IS FOUND DESIRABLE TO CHANGE ANY TOLERANCE OR OTHER DETAIL SPECIFIED ON THIS DRAWING NOTIFY THE PURCHASER PROMPTLY.

# STANDARD DRAWING

MP-106 A

MAXIMUM ALLOWABLE TOLERANCES HAVE BEEN DETERMINED AND DEVIATIONS WILL BE CAUSE FOR REJECTION.  
REMOVE ALL BURRS AND SHARP EDGES

USED ON

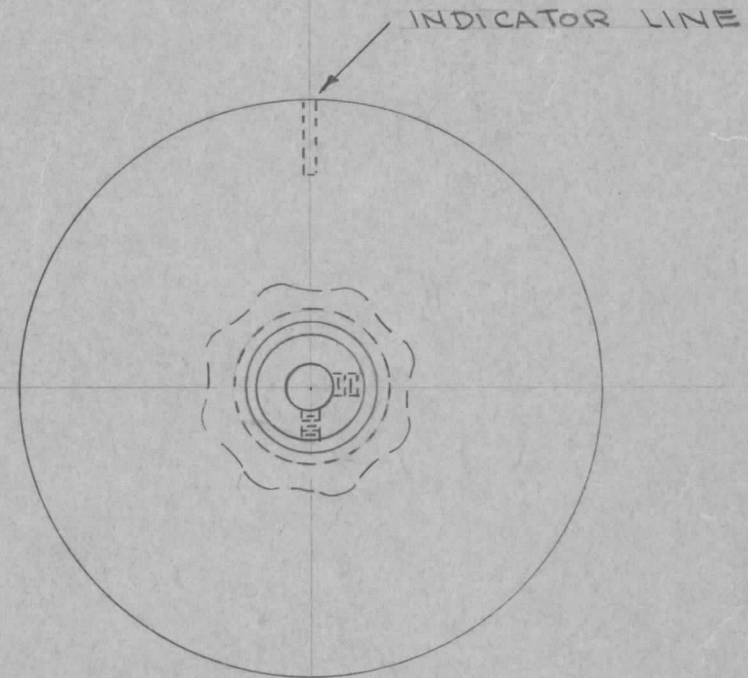
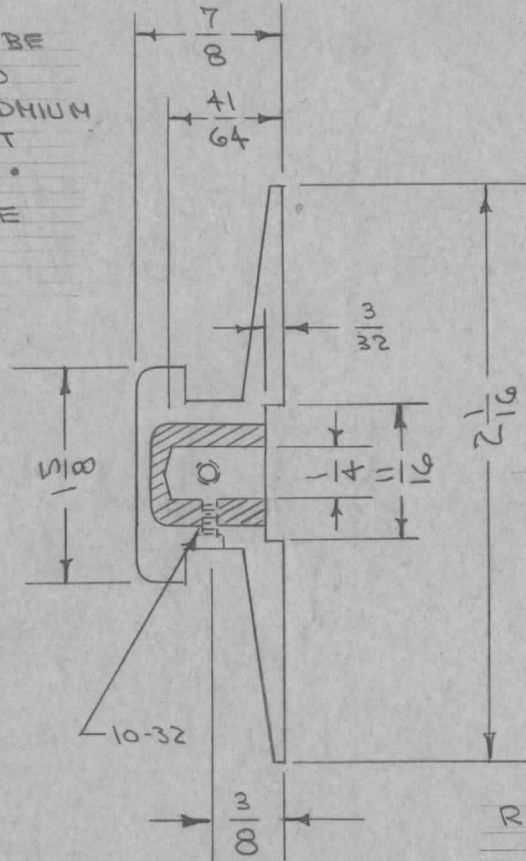
MODEL

PROJECT NO.

ASSY. NO.

DATE

NOTE. EACH KNOB SHALL BE DELIVERED WITH TWO ALLEN HEAD TYPE, CADMIUM PLATED, CUP POINT SET SCREWS, INSTALLED. THE INSERT SHALL BE BRASS.



REF: KURZ KASCH INC.  
HARRY DAVIES

MP-106-1 IND LINE UNFILLED  
CAT NO S-311-64-BB-DD

MP-106-2 IND LINE WHITE FILLED  
CAT NO S-311-64-BB-DD-L

REQ.	ITEM	PART NO.	DESCRIPTION	SYMBOL
			<b>THE TECHNICAL MATERIEL CORP.</b> MAMARONECK, NEW YORK	
		STOCK SIZE	KNOB, INSTRUMENT SKIRT TYPE	
		MATERIAL WEIGHT PER PC.		
			C.P.D. 3-8-54	G.T.O
		TYPE & TEMPER	DRAWN	ELEC. DES. APP.
			MECH. DES. APP.	
		HEAT TREAT. SPEC.	CHECKED	
			FINAL APPROVAL	
		FINISH & SPEC. NO.	MP-101	
			MP-106 A	

ISSUE	ITEM	CHANGED FROM	DATE	CN. NO.	DRAFTS	CHECKER	ENG. APP.
A	1	CAT NOS. ADDED	6/8/54	1	JAD	CAD	WDE

TOLERANCES		SCALE
ALL OTHERS	DEC. DIM. ± FRAC. DIM. ± ANGULAR DIM. ±	DRILL, PUNCH, COMMERCIAL STOCK SIZES AND MANUFACTURERS TOLERANCES ARE NOT INCLUDED.

IF IT IS FOUND DESIRABLE TO CHANGE ANY TOLERANCE OR OTHER DETAIL SPECIFIED ON THIS DRAWING NOTIFY THE PURCHASER PROMPTLY.

# STANDARD DRAWING

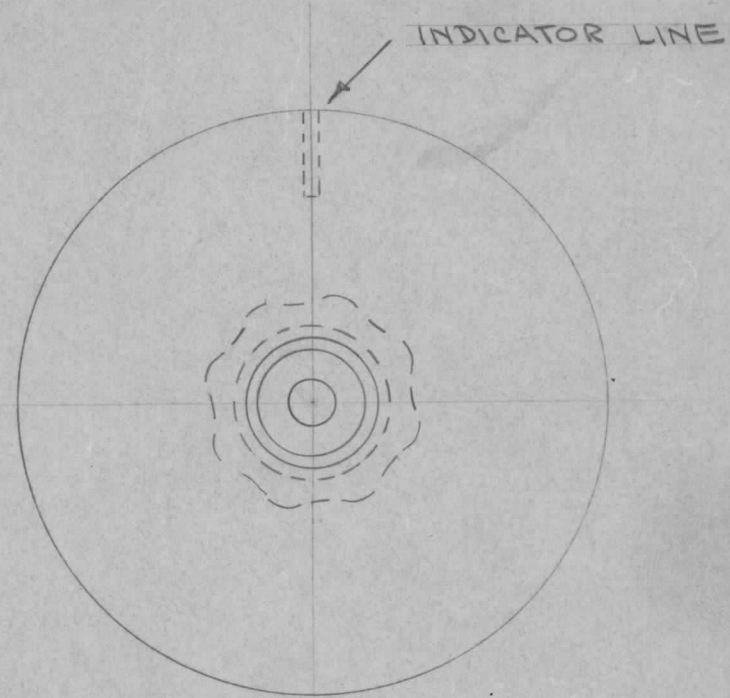
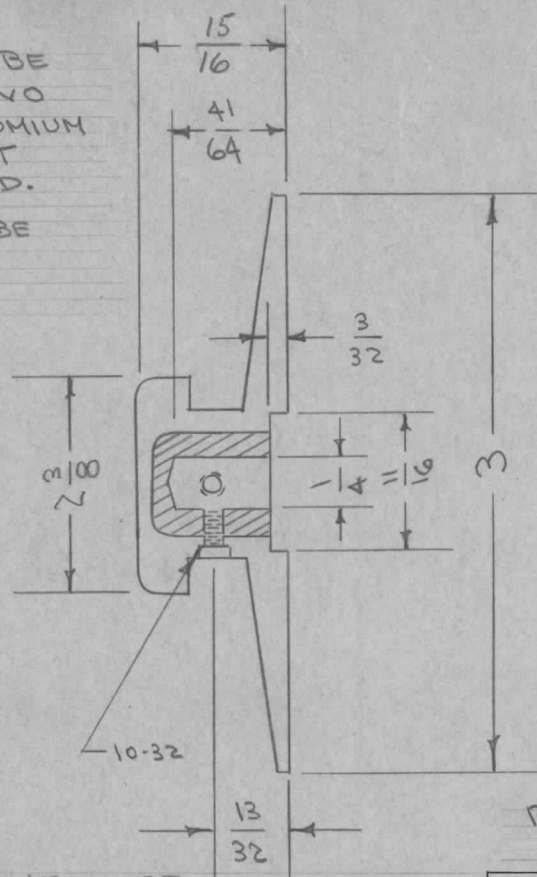
MP-107 B

MAXIMUM ALLOWABLE TOLERANCES HAVE BEEN DETERMINED AND DEVIATIONS WILL BE CAUSE FOR REJECTION. REMOVE ALL BURRS AND SHARP EDGES

USED ON

MODEL	PROJECT NO.	ASSY. NO.	DATE
-------	-------------	-----------	------

NOTE: EACH KNOB SHALL BE DELIVERED WITH TWO ALLEN HEAD TYPE, CADMIUM PLATED, CUP POINT SET SCREWS, INSTALLED. THE INSERT SHALL BE BRASS.



REF: KURZ KASCH INC.  
HARRY DAVIES

MP-107-1 IND LINE UNFILLED  
CAT NO S-312-64-BB-DD  
MP-107-2 IND LINE WHITE FILLED  
CAT NO S-312-64-BB-DD-L

REQ.	ITEM	PART NO.	DESCRIPTION	SYMBOL
		#	THE TECHNICAL MATERIEL CORP. MAMARONECK, NEW YORK	
		STOCK SIZE		
		#	KNOB, INSTRUMENT	
		MATERIAL	SKIRT TYPE	
		WEIGHT PER PC.		
			C.D.D. 3-8-54	
			G.T.O	
		TYPE & TEMPER	DRAWN	ELEC. DES. APP.
			HEAT TREAT. SPEC.	MECH. DES. APP.
			CHECKED	FINAL APPROVAL
		FINISH & SPEC. NO.	Supersedes MP-101	

B	1	1 5/16 DIM WAS 1-5/16	10-25-62	7522	af	JDe	
A	1	CAT NOS. ADDED	6/8/54	1	JDe		
ISSUE	ITEM	CHANGED FROM	DATE	CN. NO.	DRAFTS	CHECKER	ENG. APP.
TOLERANCES			SCALE				
ALL OTHERS	DEC. DIM. ± FRAC. DIM. ± ANGULAR DIM. ±		DRILL, PUNCH, COMMERCIAL STOCK SIZES AND MANUFACTURERS TOLERANCES ARE NOT INCLUDED.				

IF IT IS FOUND DESIRABLE TO CHANGE ANY TOLERANCE OR OTHER DETAIL SPECIFIED ON THIS DRAWING NOTIFY THE PURCHASER PROMPTLY.

# STANDARD DRAWING

MP-109 A

MAXIMUM ALLOWABLE TOLERANCES HAVE BEEN DETERMINED AND DEVIATIONS WILL BE CAUSE FOR REJECTION. REMOVE ALL BURRS AND SHARP EDGES

REQ. PER UNIT

USED ON

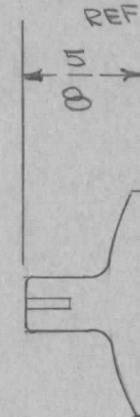
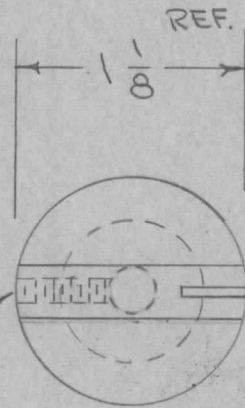
MODEL

PROJECT NO.

ASS'Y. NO.

DATE

TMC NO.	CAT. NO.	COLOR	WHITE FILLED POINTER LINE
MP-109-1	1500	RED	YES
MP-109-2	1500	BLACK	YES



NOTE:

TO BE SUPPLIED BY MFGR.  
HEX. SOCKET SET SCREWS  
8-32 x 3/8 LONG.

REF: HARRY DAVIS MOLDING CO. #1500

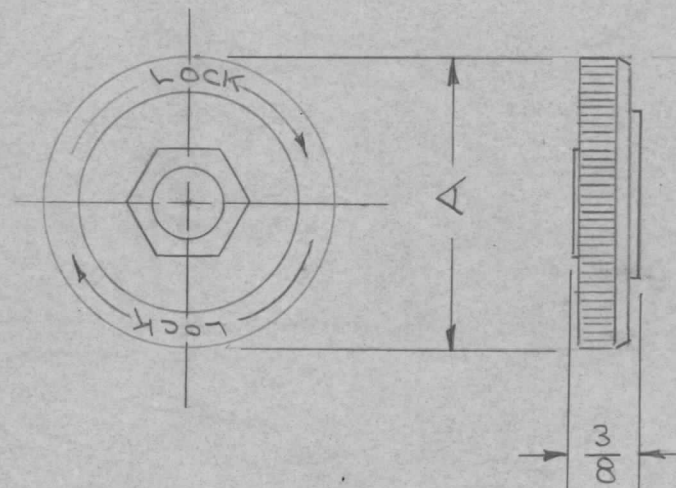
REQ.	ITEM	PART NO.	DESCRIPTION	SYMBOL
			THE TECHNICAL MATERIEL CORP. MAMARONECK, NEW YORK	
STOCK SIZE			KNOB, INSTRUMENT TYPE	
MATERIAL		WEIGHT PER PC.		
TYPE & TEMPER			CDP. 4-20-55	WDC
HEAT TREAT. SPEC.			DRAWN	ELEC. DES. APP. MECH. DES. APP.
FINISH & SPEC. NO.			CHECKED	FINAL APPROVAL

A	1	NOTE ADDED	4/30/56	1	face	CDP	WDC
ISSUE	ITEM	CHANGED FROM	DATE	CN. NO.	DRAFTS	CHECKER	ENG. APP.
TOLERANCES			SCALE				
ALL OTHERS	DEC. DIM. ± FRAC. DIM. ± ANGULAR DIM. ±		DRILL, PUNCH, COMMERCIAL STOCK SIZES AND MANUFACTURERS TOLERANCES ARE NOT INCLUDED.				

MP-109 A

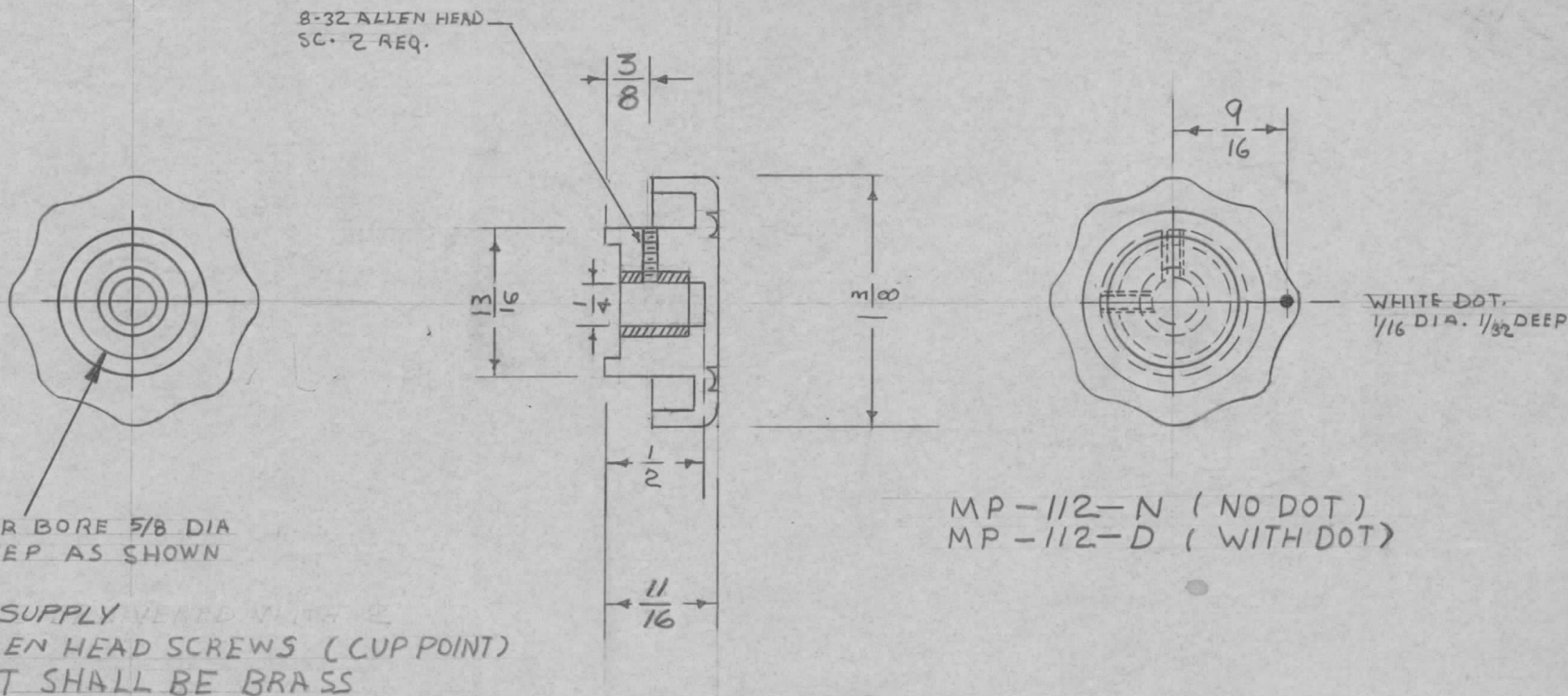


TMC NO	MFRS. NO.	FINISH	"A" DIM.	THREAD SIZE	REQ. PER UNIT	USED ON			MP-III	A
						MODEL	ASS'Y. NO.	DATE		
MP-III-1	KL701G	MATTE	1"	3/8-32	3	SBE-2		5-5-58		
-2	KL901G	"	1 5/16"	"	1	SBE-3	AD-101			
-3	KL1251G	"	1 5/8"	"						



REQ. ITEM	PART NO.	DESCRIPTION	SYMBOL	
		THE TECHNICAL MATERIEL CORP. MAMARONECK, NEW YORK		
	STOCK SIZE	KNOB, LOCK		
	MATERIAL			
A 1	MFRS. NOS. MODIFIED. MFRS. CODE NO. ADDED	8-15-63 9770 AK. Jony 46		
ISSUE ITEM	CHANGED FROM	DATE	CH. NO. DRAFTS CHECKER ENG. APP.	
TOLERANCES		SCALE: S401-99		
DEC. DIM. ±	MAXIMUM ALLOWABLE TOLERANCES HAVE BEEN DETERMINED AND ANY DEVIATIONS WILL BE CAUSE FOR REJECTION.			
FRAC. DIM. ±	REMOVE ALL BURRS AND SHARP EDGES			
ANGULAR DIM. ±	TYPE & TEMPER	HEAT TREAT. SPEC.	DRAWN	
			CHECKED	
	FINISH & SPEC. NO.	ELEC. DES. APP.	MECH. DES. APP.	
			MP-III	
			A	

REQ. PER UNIT	USED ON			MP-112	A
	MODEL	ASS'Y. NO.	DATE		
2	SBE-2		5-5-58		
1	SBE-3	AO-101	11-25-59		



MP-112-N (NO DOT)  
MP-112-D (WITH DOT)

MFG. TO SUPPLY VENTED WITH 2  
8-32 ALLEN HEAD SCREWS (CUP POINT)  
INSERT SHALL BE BRASS

REF. HARRY DAVIES' STYLE #4101

							REQ. ITEM	PART NO.	DESCRIPTION	SYMBOL	
							11		THE TECHNICAL MATERIEL CORP. MAMARONECK, NEW YORK		
							11		KNOB, INSTRUMENT		
							11				
A	-	3/8 WAS 1/4, 11/16 WAS 21/32, 5/64 WAS VB NOTE CHG	12/16/65	15359	A.V.V.	JOB					
ISSUE	ITEM	CHANGED FROM	DATE	CH. NO.	DRAFTS	CHECKER	ENG. APP.				
TOLERANCES			SCALE:								
DEC. DIM. ±			MAXIMUM ALLOWABLE TOLERANCES HAVE BEEN DETERMINED AND ANY DEVIATIONS WILL BE CAUSE FOR REJECTION.			TYPE & TEMPER		HEAT TREAT. SPEC.	DRAWN	CHECKED	FINAL APPROVAL
FRAC. DIM. ±			REMOVE ALL BURRS AND SHARP EDGES								
ANGULAR DIM. ±						FINISH & SPEC. NO.		ELEC. DES. APP.	MECH. DES. APP.		



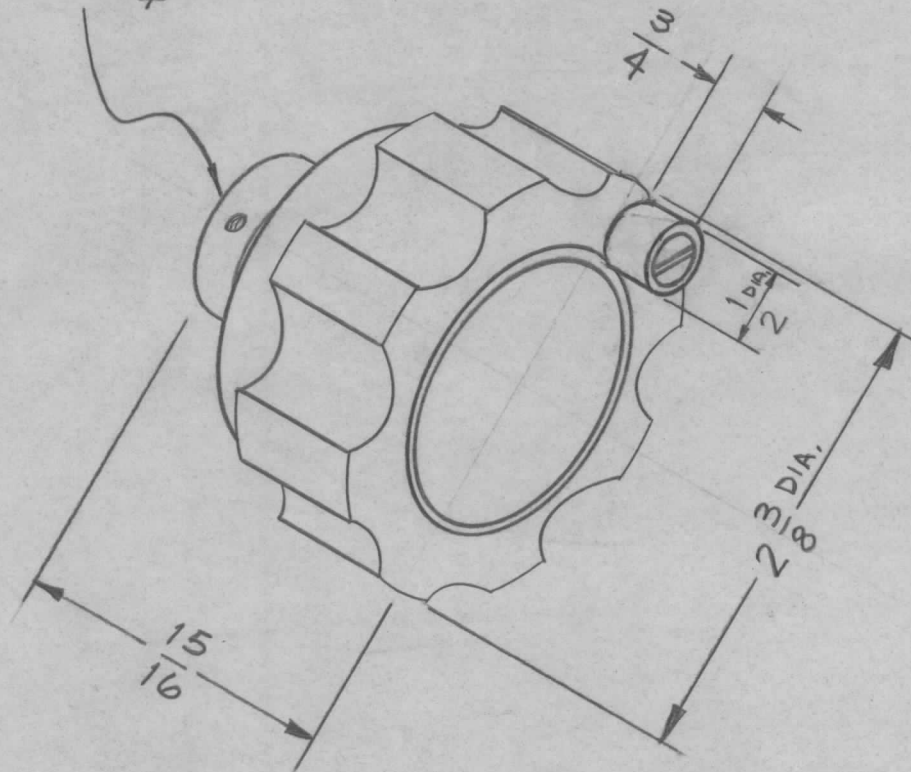
NOTICE TO PERSONS RECEIVING THIS DRAWING

THE TECHNICAL MATERIEL CORPORATION claims proprietary right in the material disclosed hereon. This drawing is issued in confidence for engineering information only and may not be reproduced or used to manufacture anything shown hereon without permission from THE TECHNICAL MATERIEL CORPORATION to the user. This drawing is loaned for mutual assistance and is subject to recall at any time.

Property of:

THE TECHNICAL MATERIEL CORPORATION  
MAMARONECK, NEW YORK

SHAFT HOLE  
.252 DIA. X  $\frac{1}{4}$  DEEP

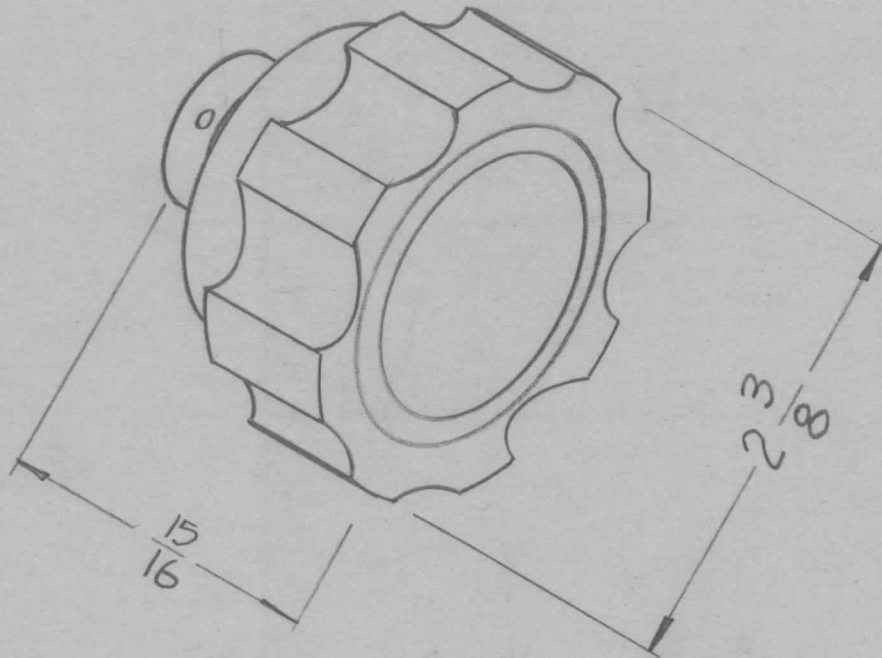


REQ. PER. UNIT	USED ON		
	MODEL	ASS'Y. NO.	DATE
2	GPT-750	RTF (F/P)	4-21-59
4	GPT-10KW		"
2	GPT-10KW	RFB-1	"

MP-113

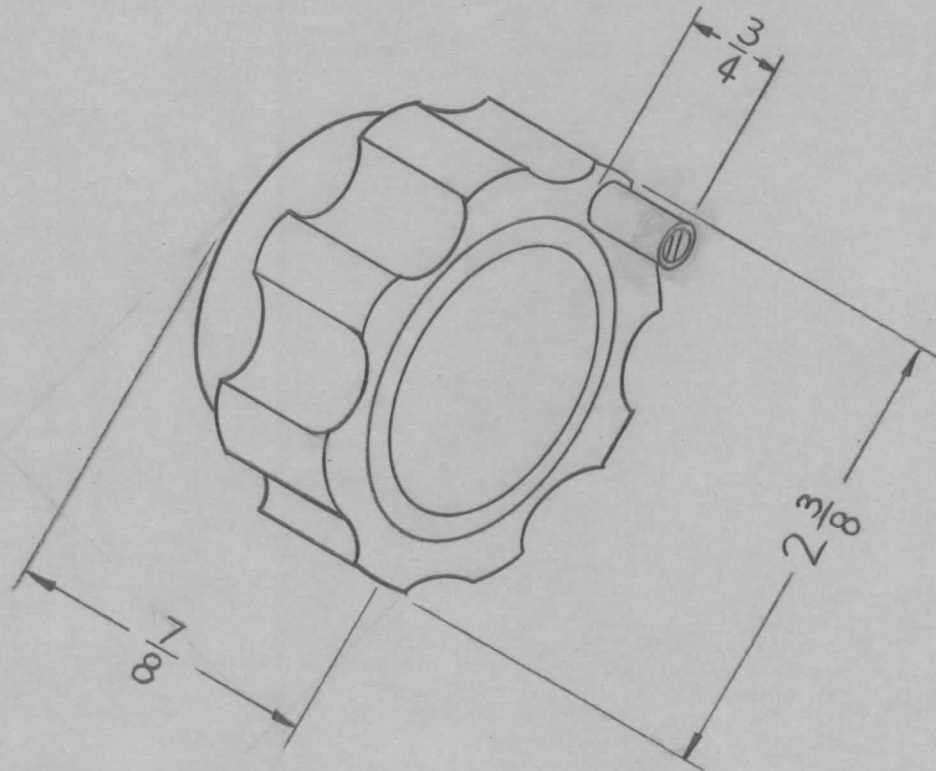
REQ.	ITEM	PART NO.	DESCRIPTION	SYMBOL							
			THE TECHNICAL MATERIEL CORP. MAMARONECK, NEW YORK								
			SLIP KNOB ASS'Y								
ISSUE	ITEM	CHANGED FROM	DATE	CH. NO.	DRAFTS	CHECKER	ENG. APP.	MATERIAL			
TOLERANCES			SCALE:		2A-1625				J.C. BIELE	<i>Hoe</i>	<i>AB</i>
DEC. DIM. ±			MAXIMUM ALLOWABLE TOLERANCES HAVE BEEN DETERMINED AND ANY DEVIATIONS WILL BE CAUSE FOR REJECTION. REMOVE ALL BURRS AND SHARP EDGES								
FRAC. DIM. ±											
ANGULAR DIM. ±											
TYPE & TEMPER		HEATTREAT. SPEC.		DRAWN		CHECKED		FINAL APPROVAL			
				<i>ATB</i>		<i>WJB</i>		MP-113			
FINISH & SPEC. NO.		ELEC. DES. APP		MECH. DES. APP							

REQ. PER UNIT	USED ON			MP-119
	MODEL	ASS'Y. NO.	DATE	
1	CHG-1		11-21-60	



								REQ. ITEM	PART NO.	DESCRIPTION	SYMBOL				
										THE TECHNICAL MATERIEL CORP.					
								STOCK SIZE		MAMARONECK, NEW YORK					
								MATERIAL		SLIP KNOB ASS'Y.					
ISSUE	ITEM	CHANGED FROM	DATE	CH. NO.	DRAFTS	CHECKER	ENG. APP.								
TOLERANCES			SCALE: 2A-2025							<i>D. J. [Signature]</i>	<i>[Signature]</i>				
DEC. DIM. ±			MAXIMUM ALLOWABLE TOLERANCES HAVE BEEN DETERMINED AND ANY DEVIATIONS WILL BE CAUSE FOR REJECTION. REMOVE ALL BURRS AND SHARP EDGES					TYPE & TEMPER	HEAT TREAT. SPEC.	DRAWN	CHECKED	FINAL APPROVAL			
FRAC. DIM. ±															
ANGULAR DIM. ±															
								FINISH & SPEC. NO.	ELEC. DES. APP	MECH. DES. APP	MP-119				

REQ. PER UNIT	USED ON			MP-120
	MODEL	ASS'Y. NO.	DATE	
1	RAK-7B		3-3-61	

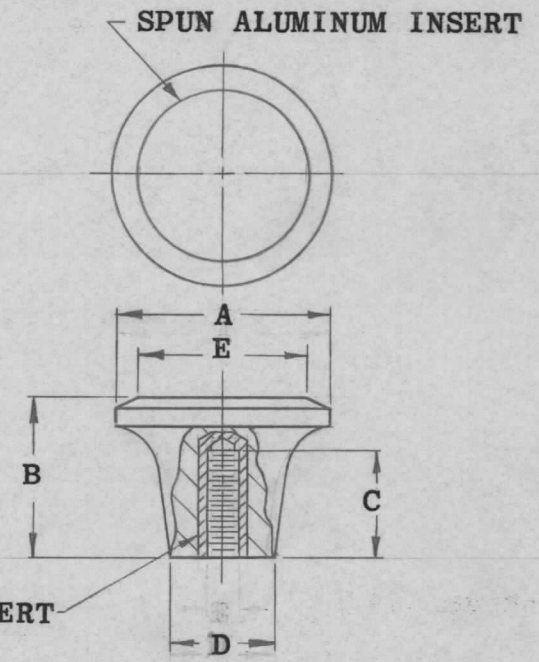


							REQ. ITEM	PART NO.	DESCRIPTION			SYMBOL				
									THE TECHNICAL MATERIEL CORP.							
									MAMARONECK, NEW YORK							
									SLIP KNOB ASS'Y							
ISSUE	ITEM	CHANGED FROM	DATE	CH. NO.	DRAFTS	CHECKER	ENG. APP.	MATERIAL								
TOLERANCES			SCALE: 1A-2068							R. UZZO	<i>[Signature]</i>	<i>[Signature]</i>				
DEC. DIM. ±			MAXIMUM ALLOWABLE TOLERANCES HAVE BEEN DETERMINED AND ANY DEVIATIONS WILL BE CAUSE FOR REJECTION. REMOVE ALL BURRS AND SHARP EDGES					TYPE & TEMPER		HEAT TREAT. SPEC.		DRAWN		CHECKED	FINAL APPROVAL	
FRAC. DIM. ±								FINISH & SPEC. NO.		ELEC. DES. APP		MECH. DES. APP		MP-120		
ANGULAR DIM. ±																



REQ. PER UNIT	USED ON			MP-126	A
	MODEL	ASS'Y. NO.	DATE		
	TTR-10		10-18-63		

TMC PART NO.	MFR. NO.	DIMENSIONS (REF)				
		A	B	C	D	E
MP-126-1	51379-3-40904	1-1/8	13/16	9/32	9/16	1"



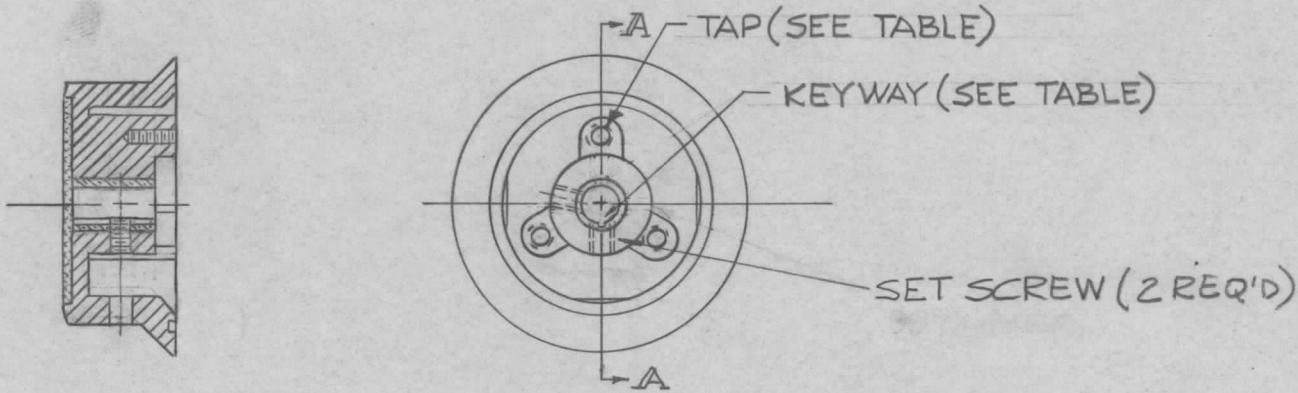
NOTE:  
 MATERIAL: MOLDED, THERMOSETTING PLASTIC BODY. (PHENOL RESIN OR MELAMINE PHENOL RESIN)

8-32 TAPPED BRASS INSERT

							REQ. ITEM	PART NO.	KOHN	DESCRIPTION	SYMBOL	
										THE TECHNICAL MATERIEL CORP. MAMARONECK. NEW YORK		
								STOCK SIZE				
A	MFG # WAS 5-379-3-40904 C WAS 9/16, E WAS 7/8	6/11/66	16333	WW				SEE NOTE		KNOB, UTILITY		
SYM	DESCRIPTION	DATE	CH. NO.	DRAFTS	CHECKER	ENG. APP.		MATERIAL				
UNLESS OTHERWISE SPECIFIED DIMENSIONS ARE IN INCHES AND INCLUDE CHEMICALLY APPLIED OR PLATED FINISHES		SCALE										
		S-401-155										
							TYPE & TEMPER		HEAT TREAT. SPEC.	DRAWN	CHECKED	FINAL APPROVAL
										R KOHN	W. JORDAN	MP-126
							FINISH & SPEC. NO.		ELEC. DES. APP.	MECH. DES. APP.		A

T.M.C. PART NO.	REF: T.M.C. PART NO.	TAP	KEYWAY	DRILL THRU CENTER HOLE
MP-128-1	MP-127-10	G-32 X 1/2 DP	1/16 X .070 DP	YES

REQ. PER UNIT	USED ON			MP-128 0
	MODEL	ASS'Y. NO.	DATE	
1	GPT-200K (AX-395)	A 3260	11-12-63	

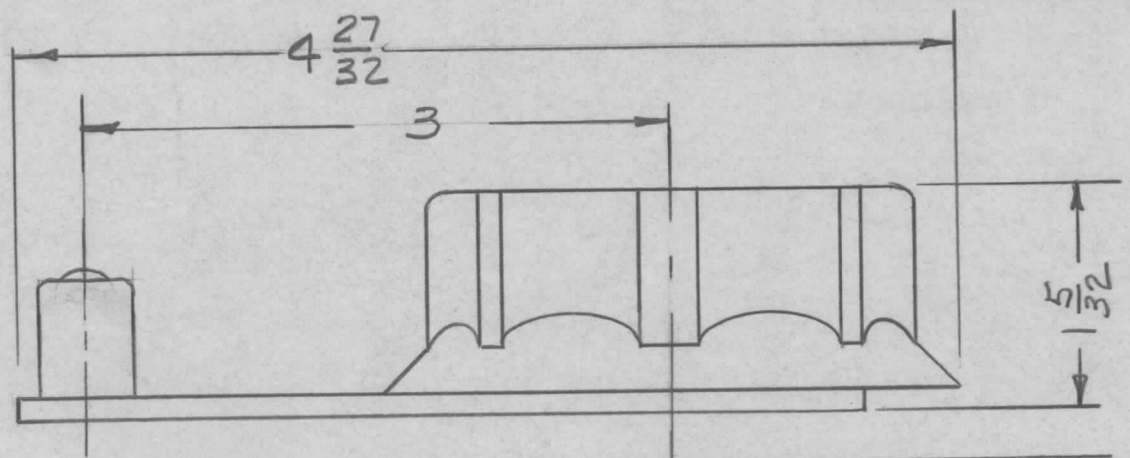


SECTION A-A

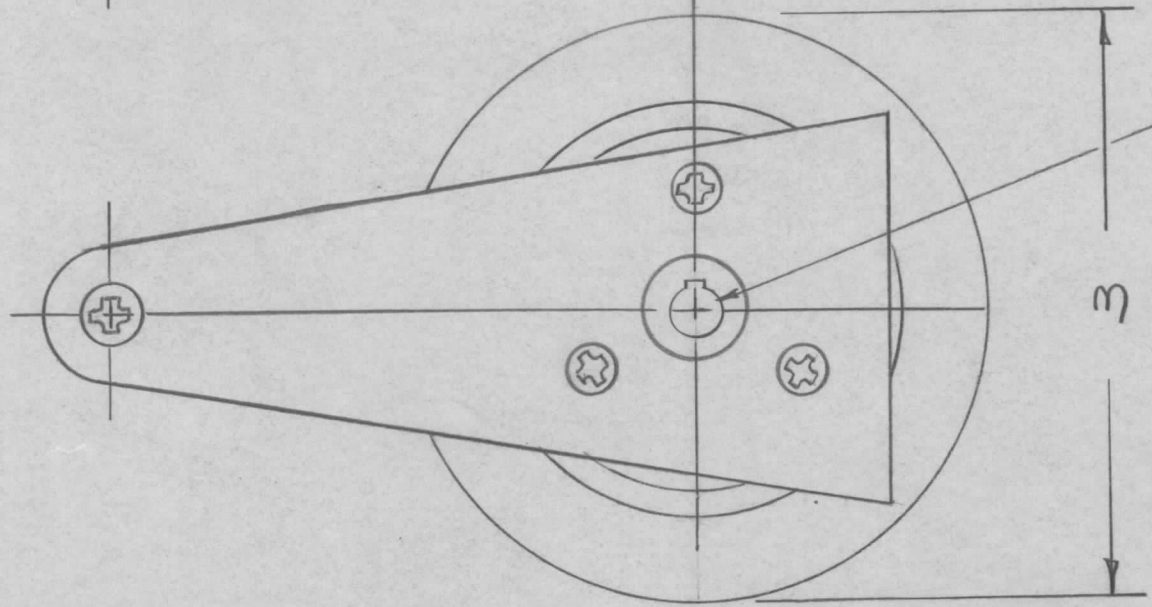
TO BE MODIFIED BY MANUFACTURER

REQ.	ITEM	PART NO.	DESCRIPTION				SYMBOL		
			THE TECHNICAL MATERIEL CORP. MAMARONECK. NEW YORK						
			STOCK SIZE						
0	ORIGINAL RELEASE FOR PRODUCTION	2-2564	MATERIAL				KNOB, MODIFIED		
SYM	DESCRIPTION	DATE	CH. NO.	DRAFTS	CHECKER	ENG. APP.			
UNLESS OTHERWISE SPECIFIED DIMENSIONS ARE IN INCHES AND INCLUDE CHEMICALLY APPLIED OR PLATED FINISHES		SCALE		A TURS1 aa gcs RJC 3-30-64					
DECIMALS .X ± .05 .XX ± .01 .XXX ± .005	FRACTIONS ± 1/64 ANGLES ± 0° 30'	CODE C	S401-155		TYPE & TEMPER	HEAT TREAT. SPEC.	DRAWN 2-2564	CHECKED RJC	FINAL APPROVAL MP-128 0
				FINISH & SPEC. NO.		ELEC. DES. APP.	MECH. DES. APP.		

REQ. PER UNIT	USED ON			MP-129	O
	MODEL	ASS'Y. NO.	DATE		
5	GPT-200K	AX-395	11-12-63		



NOTES:  
 1-BLACK KNOB WITH HANDLE AND SPUN ALUMINUM INSERT  
 2- ALL DIM. FOR REF. ONLY

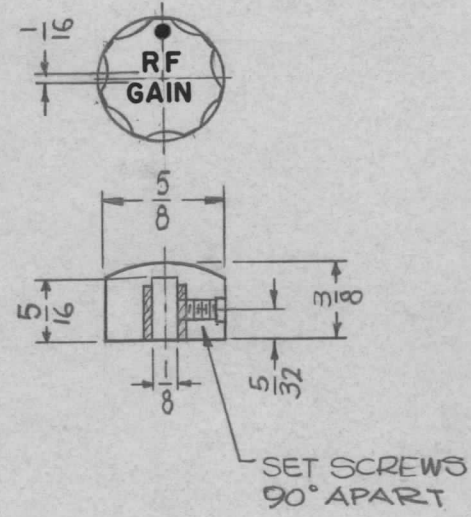


$\frac{1}{4}$  DIA SHAFT HOLE WITH 2 SET SCREWS AND  $\frac{1}{16}$  X .070 DEEP KEYWAY

							REQ. ITEM	PART NO.	F. BUDETTI	DESCRIPTION	SYMBOL
							STOCK SIZE		THE TECHNICAL MATERIEL CORP. MAMARONECK, NEW YORK		
									KNOB WITH HANDLE		
							MATERIAL				
UNLESS OTHERWISE SPECIFIED DIMENSIONS ARE IN INCHES AND INCLUDE CHEMICALLY APPLIED OR PLATED FINISHES							SCALE		A TURS I AA 9018 RJC 3-30-64		
DECIMALS .X ± .05 .XX ± .01 .XXX ± .005							TOLERANCES		DRAWN		
FRACTIONS ± 1/64 ANGLES ± 0° 30'							CODE A		CHECKED		
							A-3260		FINAL APPROVAL		
									ELEC. DES. APP.		
									MECH. DES. APP.		
									MP-129 O		



REQ. PER UNIT	USED ON			MP132	Q
	MODEL	ASS'Y. NO.	DATE		
1	SME-1		12-21-64		



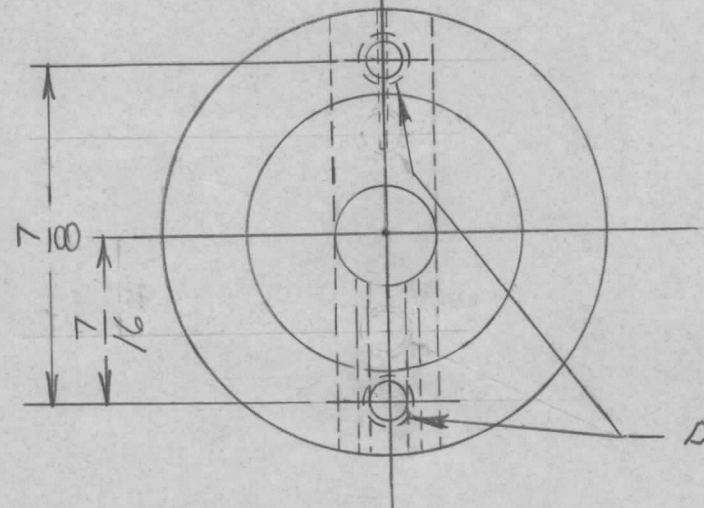
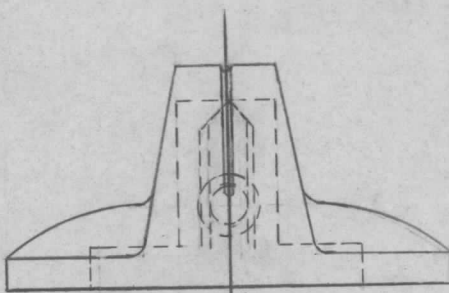
HEIGHT OF LETTERS	DEPTH OF STROKE	WIDTH OF STROKE
3/32	.010	.015
DOT	.010	1/16 DIA

- NOTE:
- ENGRAVING TO BE WHITE FILLED.
  - KNOB, BLACK

REF: MP 123-2 (MODIFIED.)

REQ.	ITEM	PART NO.	F. BUDETTI DESCRIPTION				SYMBOL
		— # —	THE TECHNICAL MATERIEL CORP. MAMARONECK, NEW YORK				
		— # —	KNOB INSTRUMENT				
		— # —	MATERIAL				
		— # —	TYPE & TEMPER	HEAT TREAT. SPEC.	DRAWN	CHECKED	FINAL APPROVAL
		— # —	FINISH & SPEC. NO.	ELEC. DES. APP.	MECH. DES. APP.		
Q	ORIGINAL RELEASE FOR PRODUCTION	12-22-64	Q	SRG			
X	EXP. RELEASE	12-21-64	X	SRG			
SYM	DESCRIPTION	DATE	CH. NO.	DRAFTS	CHECKER	ENG. APP.	
UNLESS OTHERWISE SPECIFIED DIMENSIONS ARE IN INCHES AND INCLUDE CHEMICALLY APPLIED OR PLATED FINISHES		SCALE					
		1:1					
DECIMALS	TOLERANCES	FRACTIONS	CODE				
.X ± .05		± 1/64	C				
.XX ± .01		ANGLES					
.XXX ± .005		± 0° 30'					
					SRG	@ 12-21-64	RAC
					SRG	aa	MP132 Q

REQ. PER UNIT	USED ON			MP133 $\emptyset$
	MODEL	ASS'Y. NO.	DATE	
	LRCC	AX567	3/19/65	
	LRCM	AX568		



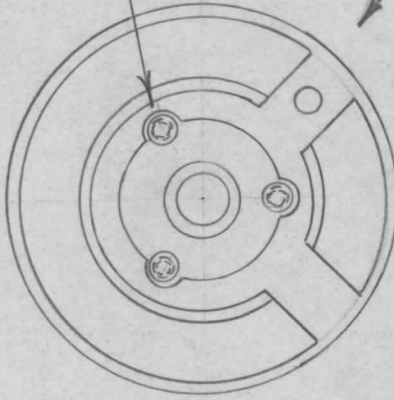
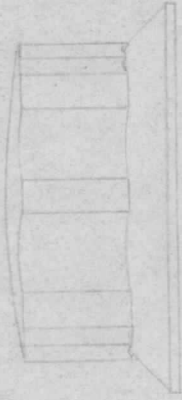
DR. & TAP #2-56 X 1/4 DEEP (2 HOLES)

				REQ. ITEM	PART NO.	DESCRIPTION		SYMBOL
					MP109-2	THE TECHNICAL MATERIEL CORP. MAMARONECK, NEW YORK E3185F		
					STOCK SIZE	KNOB, MODIFIED		
					MATERIAL			
Ø	ORIG. Release For Prod.					CLANZA	PH	FEESTON
X	EXP. RELEASE	3-27-65	1	CL	PH			
SYM	DESCRIPTION	DATE	CH. NO.	DRAFTS	CHECKER	ENG. APP.		
UNLESS OTHERWISE SPECIFIED DIMENSIONS ARE IN INCHES AND INCLUDE CHEMICALLY APPLIED OR PLATED FINISHES		SCALE		2:1		DRAWN		CHECKED
						HEAT TREAT. SPEC.		FINAL APPROVAL
DECIMALS		FRACTIONS		CODE				MP133 $\emptyset$
.X ± .05		± 1/64						
.XX ± .01		ANGLES						
.XXX ± .005		± 0° 30'						
TOLERANCES						FINISH & SPEC. NO.		ELEC. DES. APP. MECH. DES. APP.

APPLICATION

REVISIONS

QTY	MODEL USED ON	ASS'Y NO.	LTR	DESCRIPTION	DATE	E.M.N.NO	DRAFT	CHKD	APPD
1	BCTIOKA		X	EXP. RELEASE	10-31-67		R.G.		CA
			Ø	ORIG. RELEASE FOR PROD.	4-15-68				
			A	MP127-8UB OR MP127-9N8W/MP127-8N8	7-31-72	20803	GE	EP	EP



BOTTOM VIEW OF KNOB

MP127-9NB  
 MODIFIED } OR  
 MP127-8UB

REQ'D ITEM	PART NUMBER	DESCRIPTION	SYM.
BODETTI		LIST OF MATERIAL SK3290-MP2000	
FINAL APPROVAL	DATE	THE TECHNICAL MATERIEL CORP.	
MECH. DES.	DATE	MAMARONECK, NEW YORK	
ELECT. DES.	DATE	KNOB, INSTRUMENT (END)	
CHECKED	DATE	SIZE	CODE IDENT. NO.
DRAWN	DATE	A	82679
AL PETROCCA	10-16-67	DWG NO.	MP134
		SCALE	DO NOT SCALE
		SHEET	OF
		ISSUE	A

UNLESS OTHERWISE SPECIFIED DIMENSIONS ARE IN INCHES AND INCLUDE CHEMICALLY APPLIED OR PLATED FINISHES

DECIMALS 1/64  
 FRACTIONS 1/64  
 TOLS. ANGLES 0°-30'

MATERIAL

FINISH

S401-451

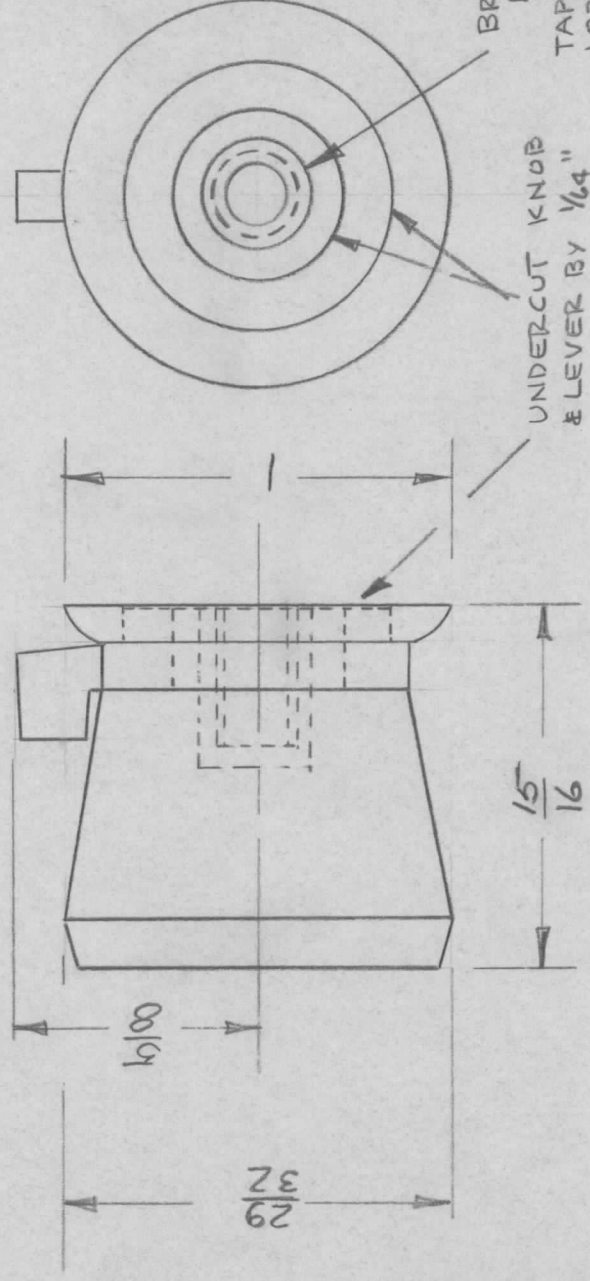
NOTICE TO PERSONS RECEIVING THIS DRAWING  
 THE TECHNICAL MATERIEL CORPORATION claims proprietary right in the material disclosed hereon. This drawing is issued in confidence for engineering information only and may not be reproduced or used to manufacture anything shown hereon without permission from THE TECHNICAL MATERIEL CORPORATION to the user. This drawing is loaned for mutual assistance and is subject to recall at any time.



REVISIONS

APPLICATION

QTY	MODEL USED ON	ASSY NO.	LTR	DESCRIPTION	DATE	E.M.N.NO	DRAFT	CHKD	APPD
2	KIT 368		Ø	ORIG RELEASE FOR PROD	3/15/73		Q.		



BRASS INSERT  
TAPPED FOR  
1032 x 3/8 DR.  
FORCE FIT OR  
PINNED.

MODIFY LK108 BY MACHINING OFF  
PAWL & HOUSING. REPLACE THREADED ROD  
WITH THREADED THROUGH INSERT.

LK108 - 5401-484

UNLESS OTHERWISE SPECIFIED DIMENSIONS ARE IN INCHES AND INCLUDE CHEMICALLY APPLIED OR PLATED FINISHES		LOCK, ADJ PAWL		
DECIMALS	FRACTIONS	REQ'D ITEM	PART NUMBER	DESCRIPTION
.X ± .05	1/64	1	LK108	
.XX ± .01	TOLS.	LIST OF MATERIAL		
.XXX ± .005	ANGLES	THE TECHNICAL MATERIEL CORP.		
	0° - 30'	MAMARONECK, NEW YORK		
MATERIAL		KNOB, PANEL		
FINISH		FINAL APPROVAL	DATE	SIZE
		<i>[Signature]</i>	6 MAR 73	A
		MECH. DES.	DATE	CODE IDENT. NO.
		<i>[Signature]</i>	6 MAR 73	82679
		ELECT. DES.	DATE	DWG NO.
		CHECKED	DATE	MP145
		DRAWN	DATE	SCALE
		<i>[Signature]</i>	6 MAR 73	OF
NOTICE TO PERSONS RECEIVING THIS DRAWING		ISSUE		
THE TECHNICAL MATERIEL CORPORATION claims proprietary right in the material disclosed hereon. This drawing is issued in confidence for engineering information only and may not be reproduced or used to manufacture anything shown hereon without permission from THE TECHNICAL MATERIEL CORPORATION to the user. This drawing is loaned for mutual assistance and is subject to recall at any time.		Ø		

REVISIONS

APPLICATION

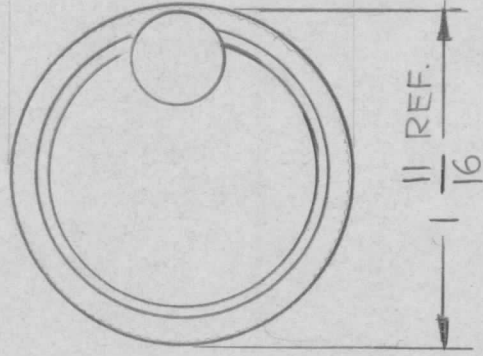
QTY	MODEL USED ON	ASS'Y NO.	LTR	DESCRIPTION	DATE	E.M.N.NO	DRAFT	CHKD	APPD
-----	---------------	-----------	-----	-------------	------	----------	-------	------	------

1 | GPR 110 | BMA516

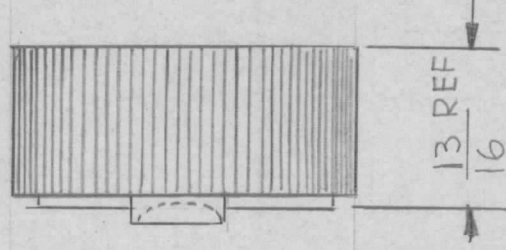
Ø Original Release 1-19-77

GDL

\*



1 11 REF.  
16



13 REF.  
16

REF: KURZ-KASCH INC.

REQ'D	ITEM	PART NUMBER	DESCRIPTION	SYM.		
LIST OF MATERIAL						
FINAL APPROVAL	DB	DATE 11/10/77	<b>THE TECHNICAL MATERIEL CORP.</b> MAMARONECK, NEW YORK  KNOB, TUNING			
MECH. DES.		DATE				
ELECT. DES.		DATE				
CHECKED		DATE				
DRAWN	G. Sedwa	DATE 6-27-74				
NOTICE TO PERSONS RECEIVING THIS DRAWING THE TECHNICAL MATERIEL CORPORATION claims proprietary right in the material disclosed hereon. This drawing is issued in confidence for engineering information only and may not be reproduced or used to manufacture anything shown hereon without permission from THE TECHNICAL MATERIEL CORPORATION to the user. This drawing is loaned for mutual assistance and is subject to recall at any time.			SIZE <b>A</b>	CODE IDENT. NO. <b>82679</b>	DWG NO. <b>MP 146</b>	ISSUE Ø
SCALE 1:1			SHEET	OF		





IF IT IS FOUND DESIRABLE TO CHANGE ANY TOLERANCE OR OTHER DETAIL SPECIFIED ON THIS DRAWING NOTIFY THE PURCHASER PROMPTLY.

# STANDARD DRAWING

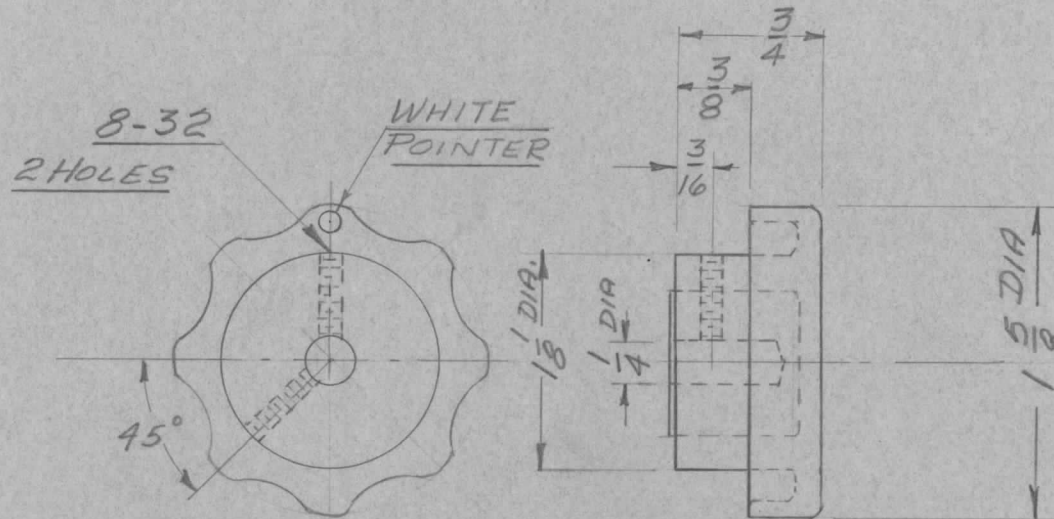
MP-10001

MAXIMUM ALLOWABLE TOLERANCES HAVE BEEN DETERMINED AND DEVIATIONS WILL BE CAUSE FOR REJECTION.  
REMOVE ALL BURRS AND SHARP EDGES

USED ON

MODEL	PROJECT NO.	ASS'Y. NO.	DATE
-------	-------------	------------	------

RF SWITCH A-10066 14/11/55



NOTE:  
 1. EACH KNOB SHALL BE DELIVERED WITH TWO ALLEN HEAD TYPE CADMIUM PLATED CUP POINT SET SCRS. INSTALLED.  
 2. INSERT SHALL BE BRASS.

DIMENSIONS FOR REFERENCE ONLY

REF: I.C.A.

REQ.	ITEM	PART NO.	DESCRIPTION	SYMBOL
			<b>TMC (Canada) LIMITED</b> OTTAWA ONTARIO	
STOCK SIZE			KNOB, INSTRUMENT, FLUTED	
MATERIAL		WEIGHT PER PC.		
TYPE & TEMPER			L. MARION	
HEAT TREAT. SPEC.			DRAWN	ELEC. DES. APP. MECH. DES. APP.
FINISH & SPEC. NO.			CHECKED	FINAL APPROVAL
			MP-10001	

ISSUE	ITEM	CHANGED FROM	DATE	CN. NO.	DRAFTS	CHECKER	ENG. APP.
TOLERANCES			SCALE				
ALL OTHERS	DEC. DIM. ± FRAC. DIM. ± ANGULAR DIM. ±		DRILL, PUNCH, COMMERCIAL STOCK SIZES AND MANUFACTURERS TOLERANCES ARE NOT INCLUDED.				