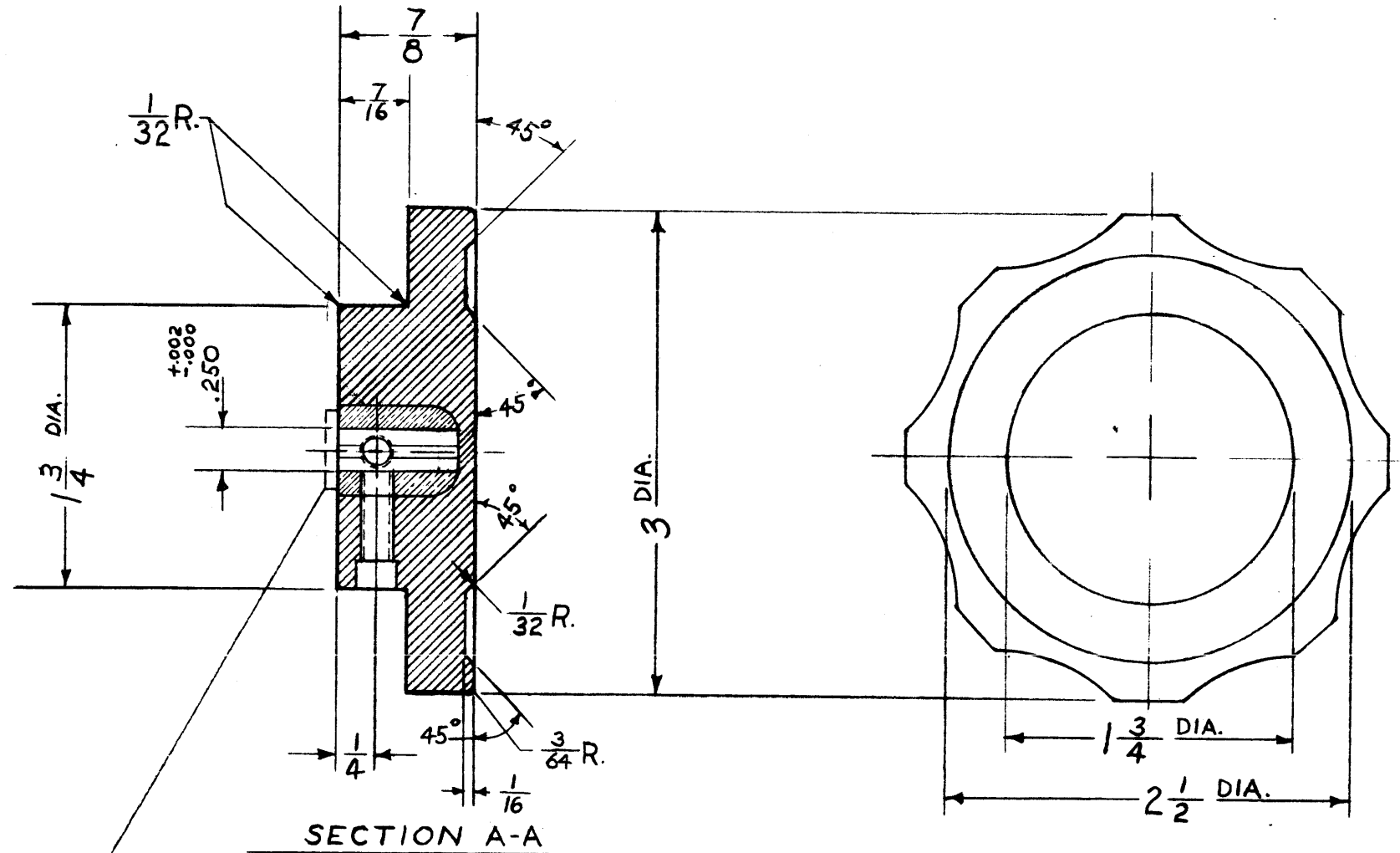
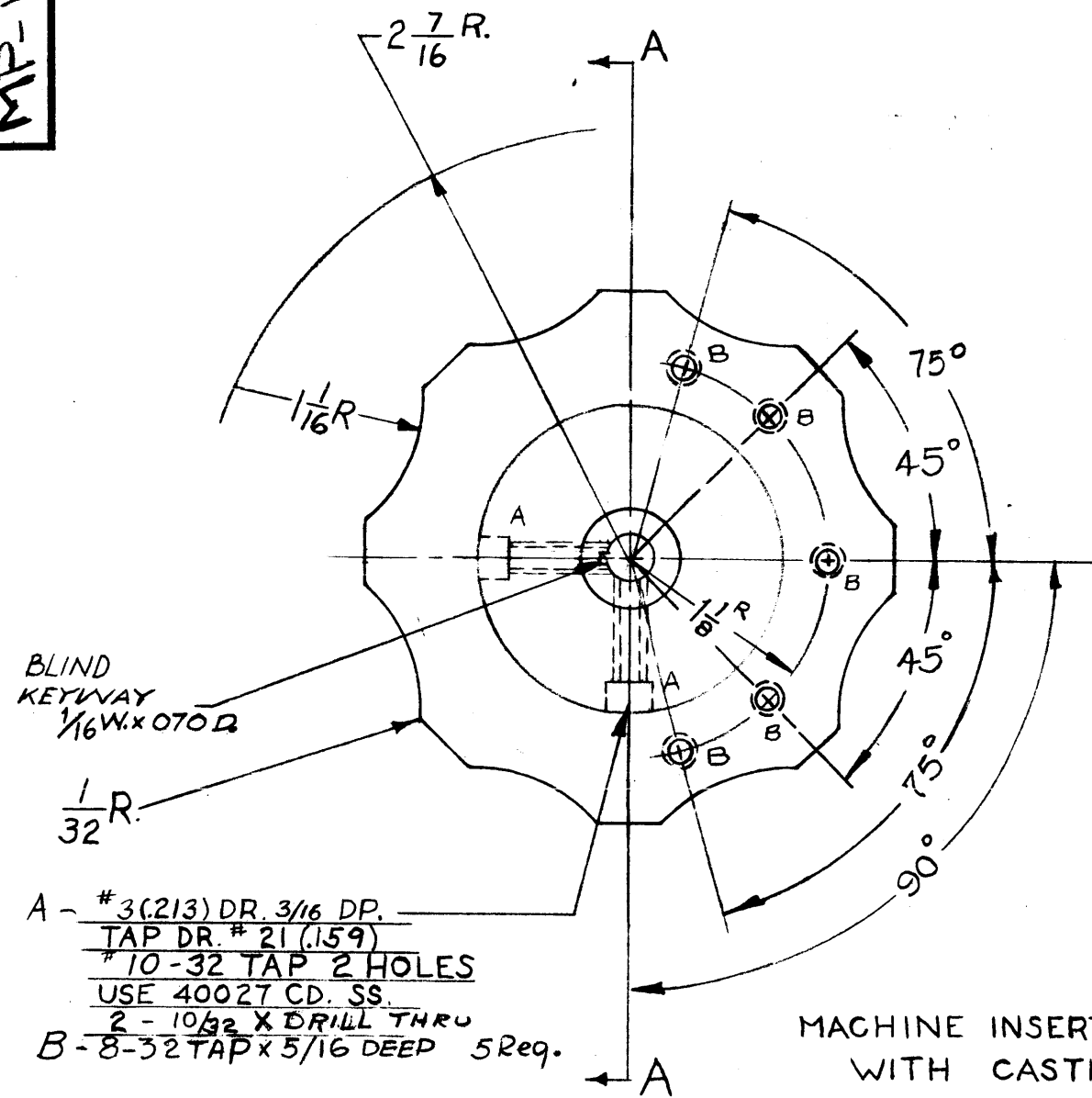


MP-115 C



MACHINE INSERT FLUSH WITH CASTING

SHRINKAGE .008 PER INCH

C	1	2.5" HOLES ADDED. ON HOLE LEGEND B' HOLE CLARIFIED	1-30-63	8124	G-D		
B	1	1/4" SHAFT DIA + KEYWAY WERE DRILLED ALL THE WAY THRU.	4/26/61	4773	DM		
A	3	.250 DIA. HOLES WAS 5/8 DEEP	8-19-60	27A	R.U.		
	2	3" HOLES ADDED					
	1	KEYWAY ADDED					
ISSUE	ITEM	CHANGED FROM	DATE	CH. NO.	DRAFTS	CHECKER	ENG APP.
TOLERANCES			SCALE: S-401-				
DEC. DIM. ± .005			MAXIMUM ALLOWABLE TOLERANCES HAVE BEEN DETERMINED AND ANY DEVIATIONS WILL BE CAUSE FOR REJECTION.				
FRAC. DIM. ± 1/64			REMOVE ALL BURRS AND SHARP EDGES				
AN ULAR DIM. ± 1/2							

REQ. PER UNIT	GPT-40K	PROJECT NO.	ASS'Y. NO.	DATE
				12-16-59
USED ON				

REQ. ITEM	PART NO.	DESCRIPTION	SYMBOL
		THE TECHNICAL MATERIEL CORP. MAMARONECK. NEW YORK	
		STOCK SIZE	
		Molded PHENOLIC	
		MATERIAL	
		KNOB, 3" DIA.	
		TYPE & TEMPER	
		HEAT TREAT. SPEC.	
		BLACK	
		FINISH & SPEC. NO.	
		ELEC. DES. APP.	
		MECH. DES. APP.	
			MP-115 C