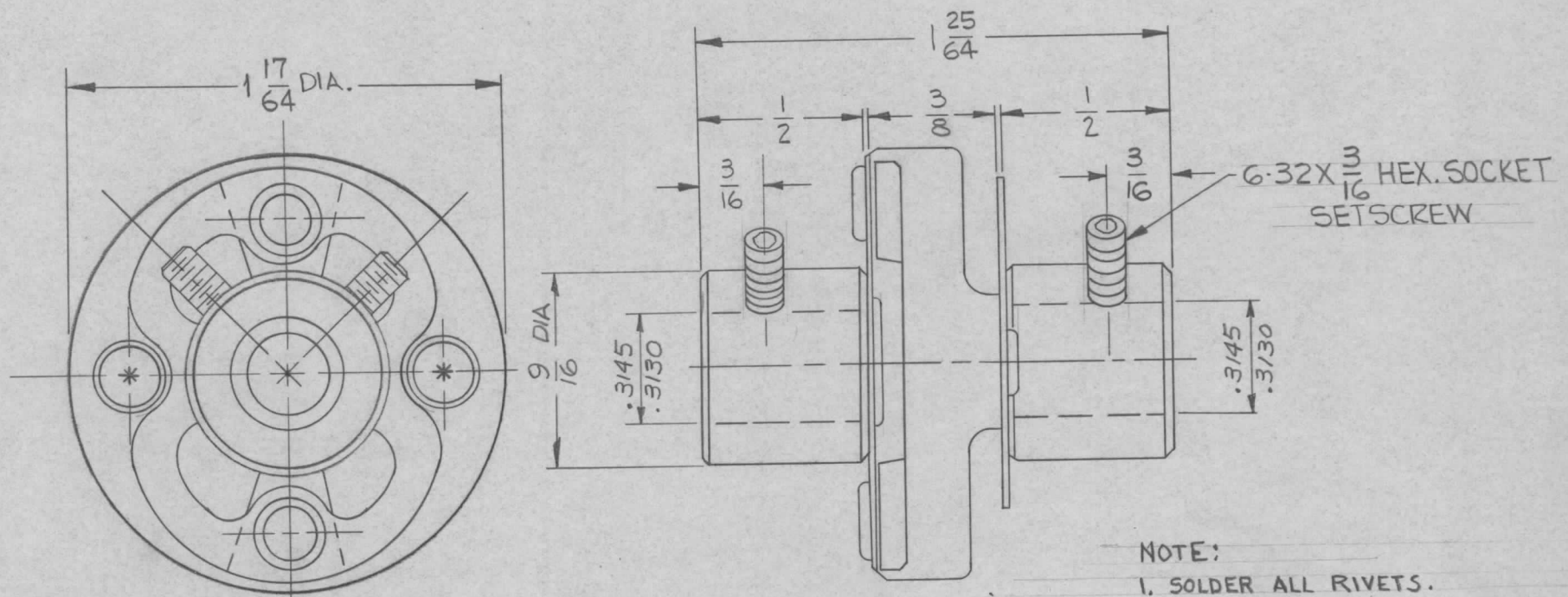


REQ. PER UNIT	USED ON		
	MODEL	ASS'Y. NO.	DATE
1	HFR-2		12-12-63
1	SBG-3		12-12-63

MC-128 A



- NOTE:
1. SOLDER ALL RIVETS.
 2. FILL IN HOLES MARKED * WITH EPOXY AFTER ASSY. (BOTH SIDES)

MATERIAL:
 INSULATION - STEATITE GRADE L4 OR BETTER.
 FLEXIBLE ARMS - PHOSPHOR, BRONZE, SPRING TEMPERED, NICKLE PLATED (.008 THICK).
 HUBS - BRASS, NICKLE PLATED, STAKED TO FLEX. ARMS.
 SET SCREWS - ALLEN HEX: SOCKET TYPE, HARDENED STEEL, CADMIUM PLATED.
 RIVETS - BRASS, NICKLE PLATED.
 FLASH-OVER VOLTAGE: 5000V RMS. APPROX.

REQ.	ITEM	PART NO.	DESCRIPTION	SYMBOL	
			ANGER		
STOCK SIZE			THE TECHNICAL MATERIEL CORP. MAMARONECK, NEW YORK		
SEE NOTES			COUPLING, FLEXIBLE		
MATERIAL					
A	NOTES 1 & 2 ADD.	3122.65 13754 9X	12/26/63	RTE	
SYM	DESCRIPTION	DATE	CH. NO.	DRAFTS	
UNLESS OTHERWISE SPECIFIED DIMENSIONS ARE IN INCHES AND INCLUDE CHEMICALLY APPLIED OR PLATED FINISHES		SCALE	DO NOT SCALE		
DECIMALS .X ± .05 .XX ± .01 .XXX ± .005		TOLERANCES		FRACTIONS ± 1/64 ANGLES ± 0° 30'	CODE
		5401-12(410-19)		FINISH & SPEC. NO.	ANGER
				ELEC. DES. APP.	MECH. DES. APP.
				MC-128 A	