

IF IT IS FOUND DESIRABLE TO CHANGE ANY TOLERANCE OR OTHER DETAIL SPECIFIED ON THIS DRAWING NOTIFY THE PURCHASER PROMPTLY.

MC-119..B

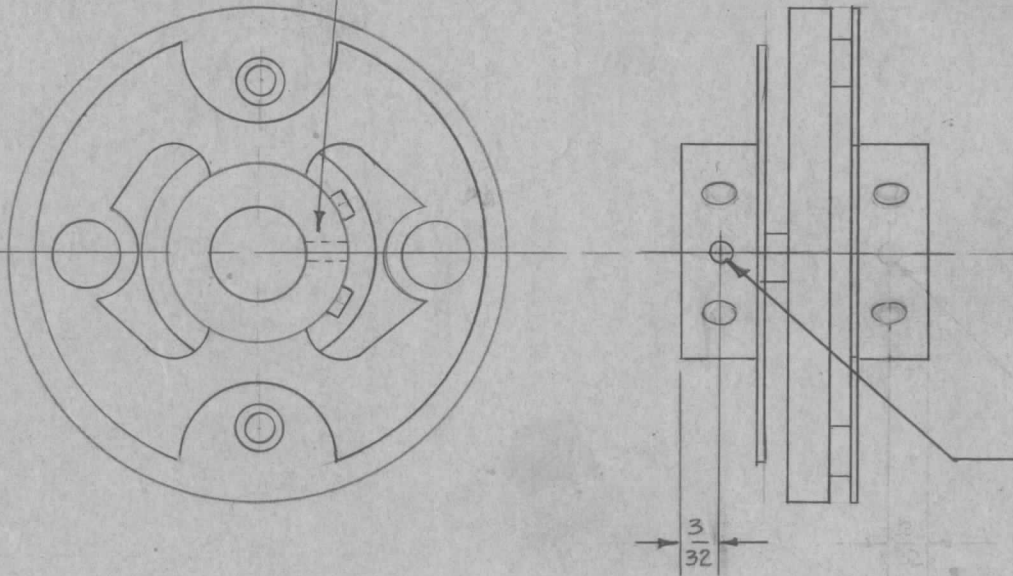
MAXIMUM ALLOWABLE TOLERANCES HAVE BEEN DETERMINED AND DEVIATIONS WILL BE CAUSE FOR REJECTION. REMOVE ALL BURRS AND SHARP EDGES

REQ. PER UNIT

USED ON

REQ. PER UNIT	MODEL	PROJECT NO.	ASS'Y. NO.	DATE
2	TAC-1	132	A-723	1/25/54

NOTE - DRILL PILOT HOLE ONLY THRU 1 SIDE OF COLLAR.



USE MC-104-2

STEP 1 REMOVE EXISTING 4 SET SCREWS AND REPLACE WITH AN-565D-GH3  
STEP 2 - DRILL PILOT HOLE AS SHOWN

NO. 52 (.063) DRILL 1 REQ.

MODIFY MC-104-2

REQ.	ITEM	PART NO.	DESCRIPTION	SYMBOL
	#		THE TECHNICAL MATERIEL CORP. MAMARONECK, NEW YORK	
		STOCK SIZE		
	#	#	COUPLING, MODIFIED	
		MATERIAL	TAC-1	
		WEIGHT PER PC.		
			C.D.D.	WDC
		TYPE & TEMPER	APB	WDC
			DRAWN	ELEC. DES. APP.
			JADe	APB
		HEAT TREAT. SPEC.	CHECKED	FINAL APPROVAL
				MC-119
		FINISH & SPEC. NO.		B

ISSUE	ITEM	CHANGED FROM	DATE	CN. NO.	DRAFTS	CHECKER	ENG. APP.
B	1	PILOT HOLE MOVED	1/15/57	2	16	JADe	WDC
A	1	PILOT HOLE REMOVED		1	C.D.D.	JADe	WDC

TOLERANCES

SCALE

DRILL, PUNCH, COMMERCIAL STOCK SIZES AND MANUFACTURERS TOLERANCES ARE NOT INCLUDED.

ALL OTHERS

DEC. DIM. ±  
FRAC. DIM. ±  
ANGULAR DIM. ±