

IF IT IS FOUND DESIRABLE TO CHANGE ANY TOLERANCE OR OTHER DETAIL SPECIFIED ON THIS DRAWING NOTIFY THE PURCHASER PROMPTLY.

STANDARD DRAWING

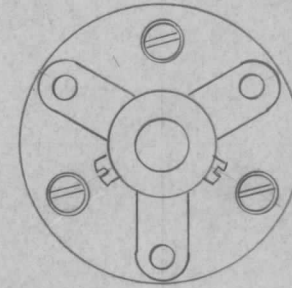
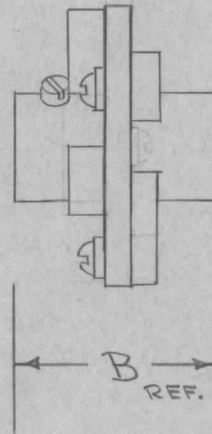
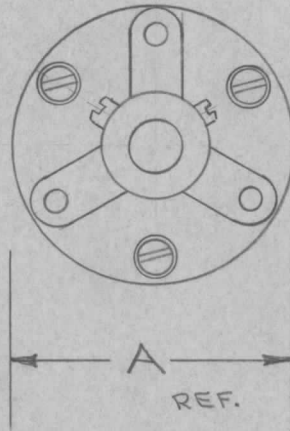
MC-116

MAXIMUM ALLOWABLE TOLERANCES HAVE BEEN DETERMINED AND DEVIATIONS WILL BE CAUSE FOR REJECTION. REMOVE ALL BURRS AND SHARP EDGES

USED ON

MODEL	PROJECT NO.	ASS'Y. NO.	DATE
-------	-------------	------------	------

T.M.C. NO.	CAT. NO.	TYPE	DIMENSIONS		PEAK FLASH-OVER	TO FIT SHAFT DIA.
			A	B		
MC-116-1	PL-5014	CNF	2/4	2/16	12,000V	3/8
MC-116-2	PL-5201	ENF	1 3/8	1 13/32	10,000V	1/4
MC-116-3	PL-5013	FNF	1 3/8	1 5/16	7,500V	1/4



REF. A. D. CARDWELL MFG. CO.

REQ.	ITEM	PART NO.	DESCRIPTION	SYMBOL
		//	THE TECHNICAL MATERIEL CORP. MAMARONECK, NEW YORK	
		STOCK SIZE		
		//	COUPLING, RIGID	
		MATERIAL WEIGHT PER PC.		
		//		
		TYPE & TEMPER	CSD-11-20-53	
		//	DRAWN	ELEC. DES. APP. MECH. DES. APP.
		HEAT TREAT. SPEC.	WOC	WOC
		//	CHECKED	FINAL APPROVAL
		FINISH & SPEC. NO.		MC-116

ISSUE	ITEM	CHANGED FROM	DATE	CN. NO.	DRAFTS	CHECKER	ENG. APP.
-------	------	--------------	------	---------	--------	---------	-----------

TOLERANCES

SCALE //

ALL OTHERS

DEC. DIM. ±
FRAC. DIM. ±
ANGULAR DIM. ±

DRILL, PUNCH, COMMERCIAL STOCK SIZES AND MANUFACTURERS TOLERANCES ARE NOT INCLUDED.