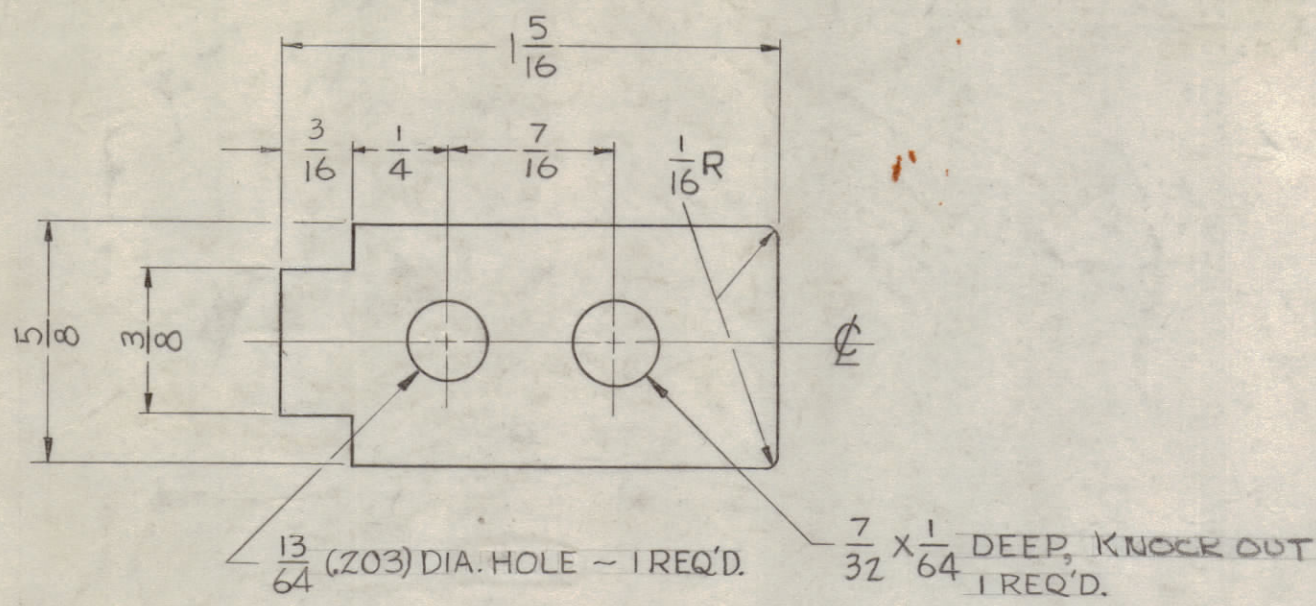
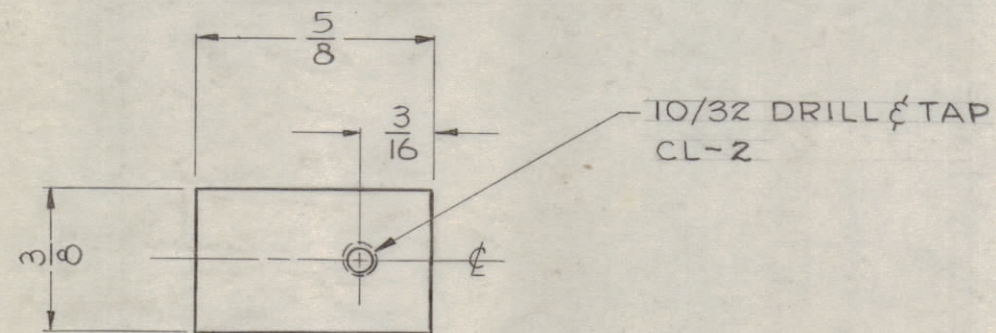


IF IT IS FOUND DESIRABLE TO CHANGE ANY TOLERANCE OR OTHER DETAIL SPECIFIED ON THIS DRAWING NOTIFY THE PURCHASER PROMPTLY.

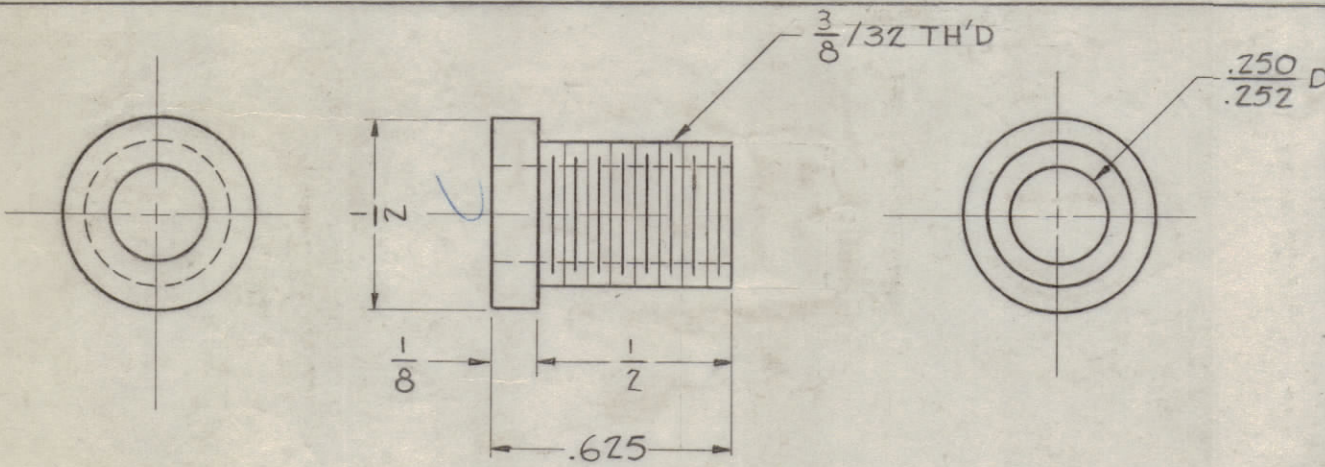
MAXIMUM ALLOWABLE TOLERANCES HAVE BEEN DETERMINED AND DEVIATIONS WILL BE CAUSE FOR REJECTION. REMOVE ALL BURRS AND SHARP EDGES.



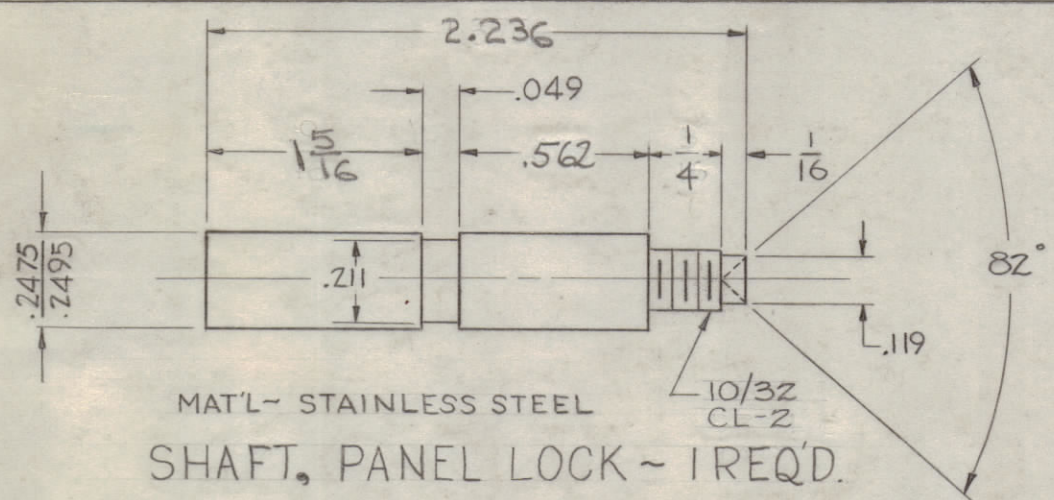
MAT'L - 16 GA. STEEL, COLD ROLLED, FINISH - NICKEL PLATED
PLATE, PRESSURE - 1 REQ'D.



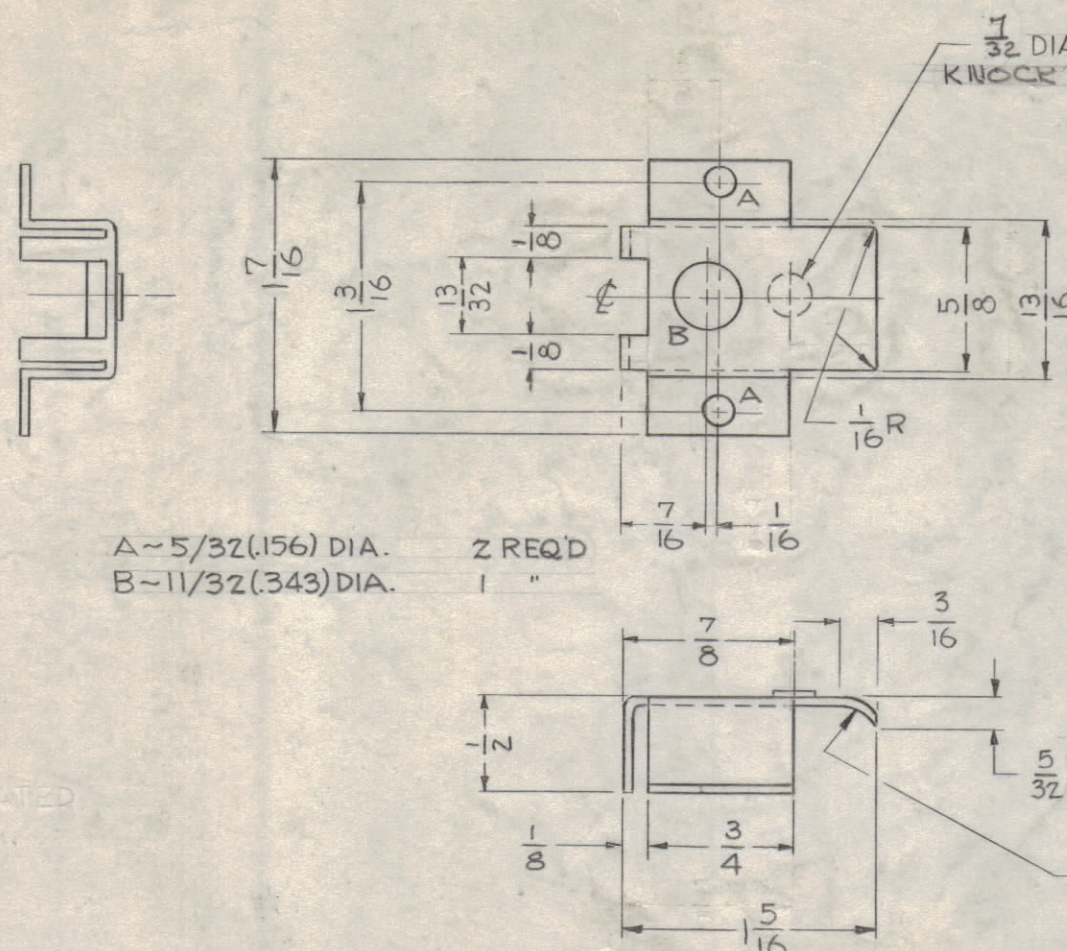
MAT'L - .093 STEEL, COLD ROLLED, FINISH - NICKEL PLATED
PLATE, LOCKING - 1 REQ'D.



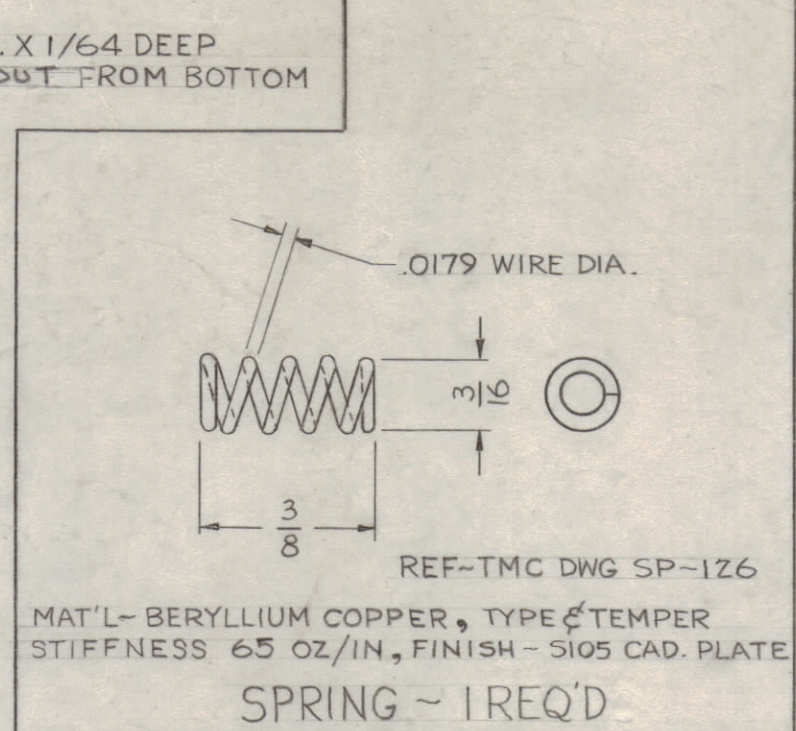
MAT'L - BRASS, 1/2 HARD
BUSHING, PANEL MTG. - 1 REQ'D.



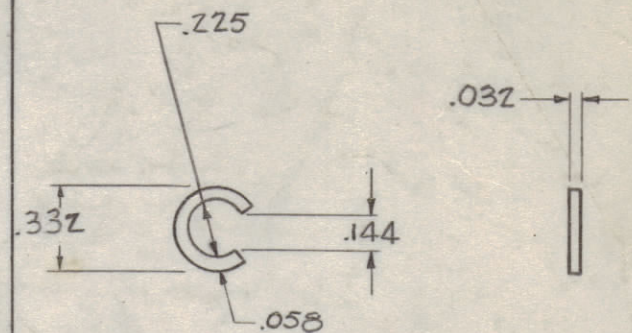
MAT'L - STAINLESS STEEL
SHAFT, PANEL LOCK - 1 REQ'D.



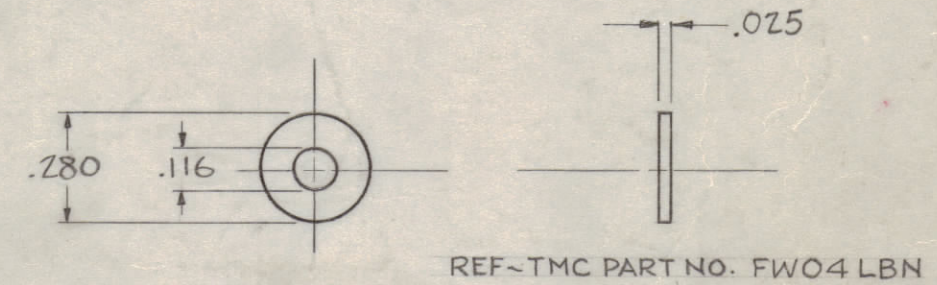
MAT'L - 16 GA. STEEL, COLD ROLLED
LOCKING PLATE, BODY - 1 REQ'D.



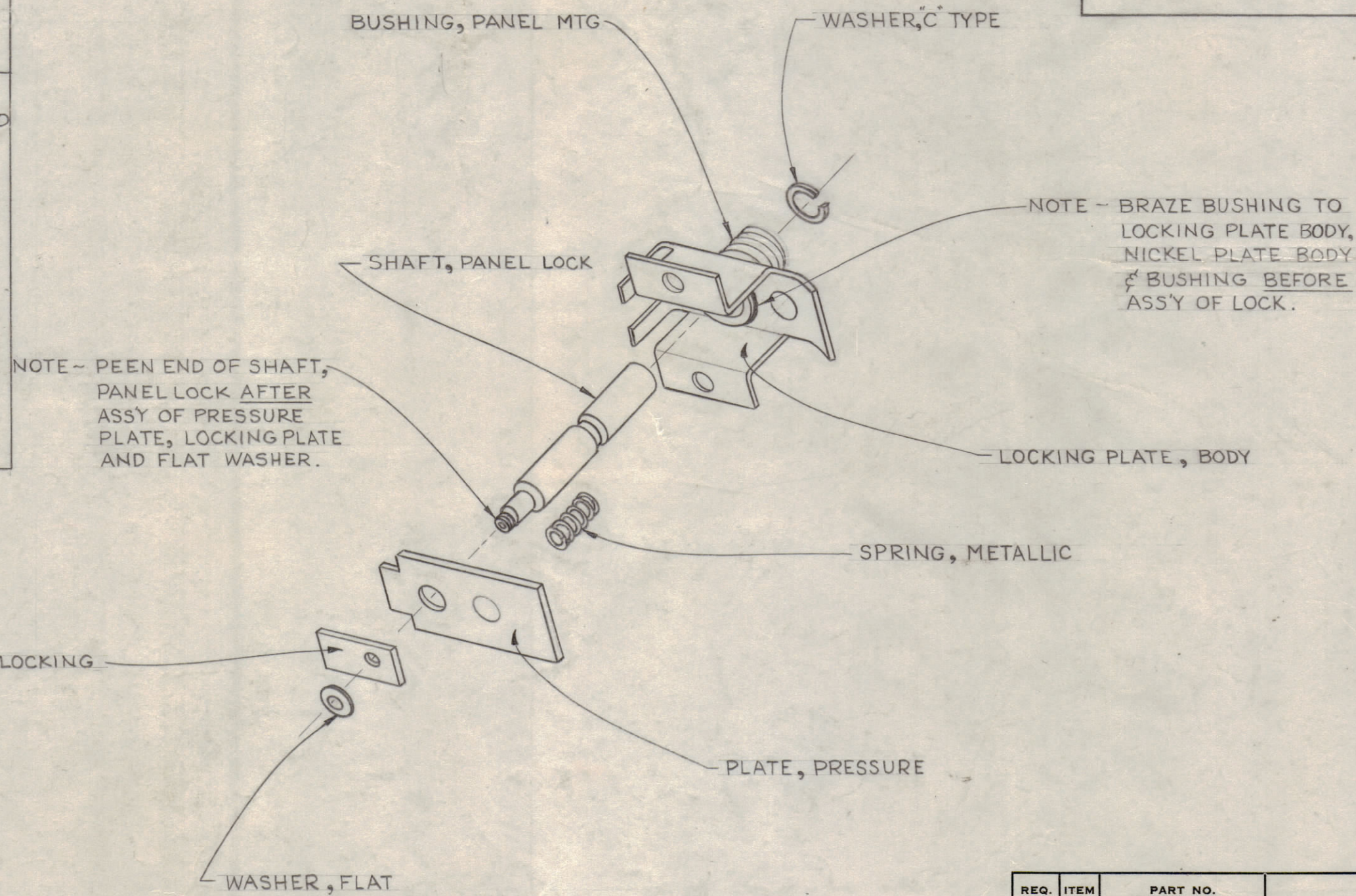
MAT'L - BERYLLIUM COPPER, TYPE 2 TEMPER
 STIFFNESS 65 OZ/IN, FINISH - S105 CAD. PLATE
SPRING - 1 REQ'D.



REF-TMC NO. WA -113
WASHER, C TYPE - 1 REQ'D.



MAT'L - BRASS, FINISH - NICKEL PLATE
WASHER, FLAT - 1 REQ'D.



LK-100 A

3/16 TO 1/4 - .625 TO .562	DATE	CH. NO.	DRAFTS	CHECKER	ENG. APP.
TOLERANCES		SCALE:			
DEC. DIM. ±	DRILL, PUNCH, COMMERCIAL STOCK SIZES AND MANUFACTURERS TOLERANCES ARE NOT INCLUDED.				
FRAC. DIM. ±					
ANGULAR DIM. ±					

2	RTF-2	F/P	12-2-58
REQ. PER UNIT	MODEL	PROJECT NO.	DATE
		ASSY. NO.	
USED ON			

REQ. ITEM	PART NO.	DESCRIPTION	SYMBOL
THE TECHNICAL MATERIEL CORP. MAMARONECK, NEW YORK			
STOCK SIZE			
LOCK, PANEL			
MATERIAL		WEIGHT PER PC.	
TYPE & TEMPER		J.C. BIELE	
DRAWN		ELEC. DES. APP. MECH. DES. APP.	
HEAT TREAT. SPEC.		CHECKED	
FINISH & SPEC. NO.		FINAL APPROVAL	
LK-100 A			