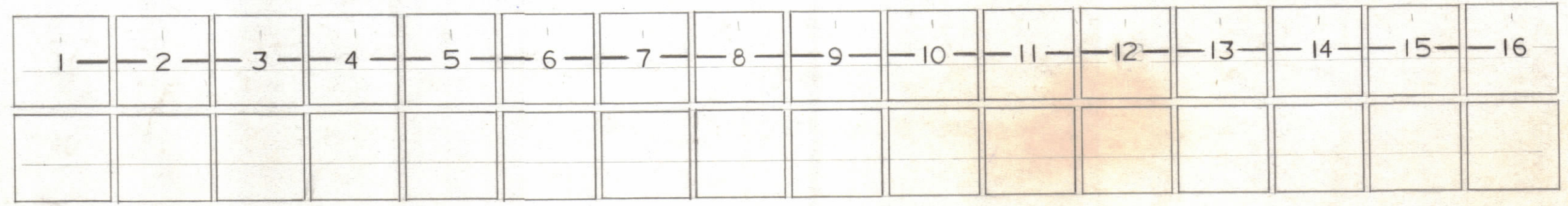
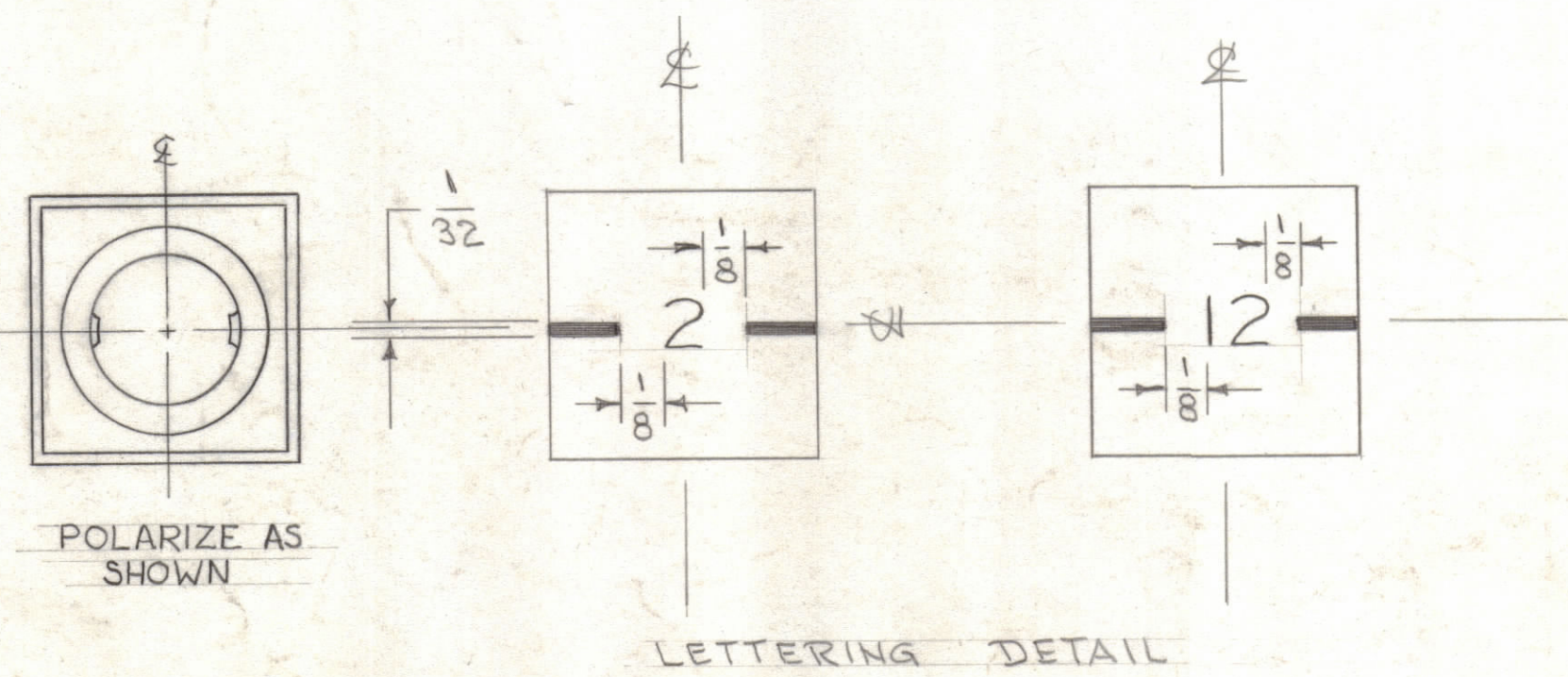


REVISIONS						
ZONE	LTR	DESCRIPTION	DATE	E.M.N.NO	DRAFT	CHKD APPD
X		EXP. RELEASE	6/3/70			KL
Ø		ORIGINAL RELEASE FOR PRODUCTION	6/8/70			W



NUMERALS TO BE 1/8 HIGH BLACK GOTHIC CENTERED ON BUTTONS.

LINES TO BE 1/32 THICK SPACED AS SHOWN ON LETTERING DETAIL. (BLACK)



REFS LICON # 01-911411 QTY 16 EACH SET

QTY. REQ.	ITEM	PART NO.	DESCRIPTION	SYMBOL
LIST OF MATERIAL				
THE TECHNICAL MATERIEL CORP. MAMARONECK, NEW YORK				
LENS SET, IND SW.				
SIZE			CODE IDENT.NO.	DWG NO.
C			82679	LI 8003
SCALE			SHEET	OF
			1	Ø

UNLESS OTHERWISE SPECIFIED DIMENSIONS ARE IN INCHES AND INCLUDE CHEMICALLY APPLIED OR PLATED FINISHES		FINAL APPROVAL <i>Ben Nap</i>	DATE 6-5-70
TOLERANCES ON		MECH. DES.	DATE 2-14-60
DECIMALS	FRACTIONS	ELECT. DES.	DATE
.X ± .05	± 1/64	CHECKED <i>W.J.B.</i>	DATE 6-5-70
.XX ± .01	ANGLES	DRAWN C.D. DEAN	DATE 9-8-67
.XXX ± .005	± 0° -30'		

18	TCRM-1	
QTY / UNIT	MODEL USED ON	ASS'Y NO.
APPLICATION		
CODE		

NOTICE TO PERSONS RECEIVING THIS DRAWING  
THE TECHNICAL MATERIEL CORPORATION claims proprietary right in the material disclosed hereon. This drawing is issued in confidence for engineering information only and may not be reproduced or used to manufacture anything shown hereon without permission from THE TECHNICAL MATERIEL CORPORATION to the user. This drawing is loaned for mutual assistance and is subject to recall at any time.