

4

3

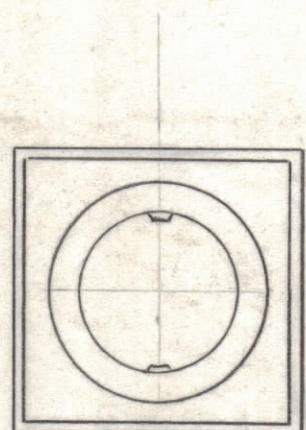
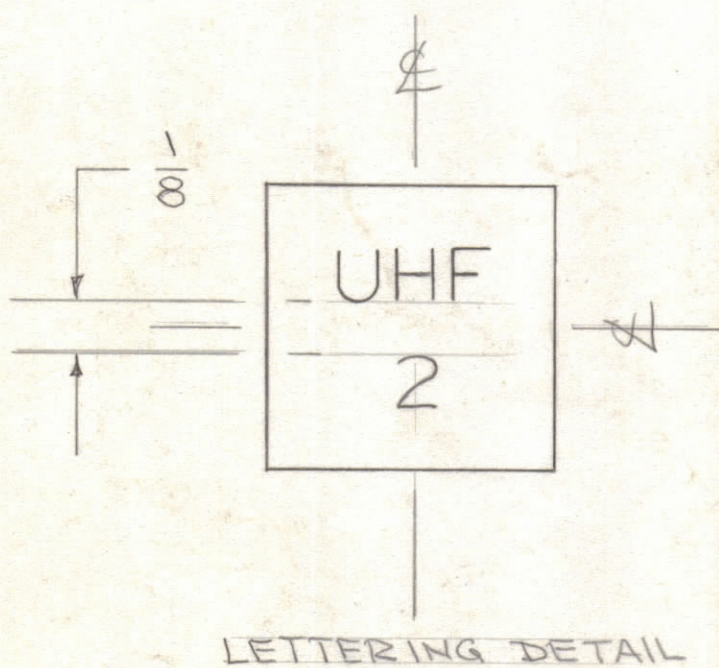
2

1

REVISIONS						
ZONE	LTR	DESCRIPTION	DATE	E.M.N.NO	DRAFT	CHKD APPD
	X	EXP. RELEASE	6/3/70		KLH	
	Ø	ORIGINAL RELEASE FOR PRODUCTION	6/8/70		CU	

UHF	HF	MF	VLf	UHF	VHF	UHF	VHF	UHF	VHF	HF	LSB	USB	DIR	TRA	DVC	
1	1	1	1	1	1	2	2	3	3	1	1	1	1	1		
UHF	HF	MF	VLf	MF/HF	VLf	MF/HF	VLf	MF/HF	VLf	HF	LSB	USB	DIR	TRA		
2	2	2	2	1	1	2	2	3	3	2	2	2	2	2		

LETTERING & NUMERALS TO BE 1/8 HIGH BLACK GOTHIC  
SPACED AS SHOWN IN LETTERING DETAIL



POLARIZE AS SHOWN

1	TCRM-1	
QTY / UNIT	MODEL USED ON	ASS'Y NO.
APPLICATION		
	CODE	

NOTICE TO PERSONS RECEIVING THIS DRAWING  
THE TECHNICAL MATERIEL CORPORATION claims proprietary right in the material disclosed hereon. This drawing is issued in confidence for engineering information only and may not be reproduced or used to manufacture anything shown hereon without permission from THE TECHNICAL MATERIEL CORPORATION to the user. This drawing is loaned for mutual assistance and is subject to recall at any time.

UNLESS OTHERWISE SPECIFIED  
DIMENSIONS ARE IN INCHES  
AND INCLUDE CHEMICALLY APPLIED  
OR PLATED FINISHES

TOLERANCES ON

DECIMALS	FRACTIONS
.X ± .05	± 1/64
.XX ± .01	ANGLES
.XXX ± .005	± 0° -30'

MATERIAL  
FINISH

REF: LICON # 01-911411 QTY 34 ENGRAVE 31

QTY. REQ.	ITEM	PART NO.	DESCRIPTION	SYMBOL
	LIST OF MATERIAL			
	THE TECHNICAL MATERIEL CORP. MAMARONECK, NEW YORK			
	LENS SET, IND. SW.			
	SIZE	CODE IDENT.NO.	DWG NO.	ISSUE
	C	82679	LI8002	Ø
	SCALE		SHEET	OF

FINAL APPROVAL: *Ben Nap* DATE: 6-8-70  
MECH. DES. DATE: 6-14-70  
ELECT. DES. DATE: 6-5-70  
CHECKED: *CPB* DATE: 6-5-70  
DRAWN: C.D. DEAN DATE: 9-8-67

4

3

2

1

118002