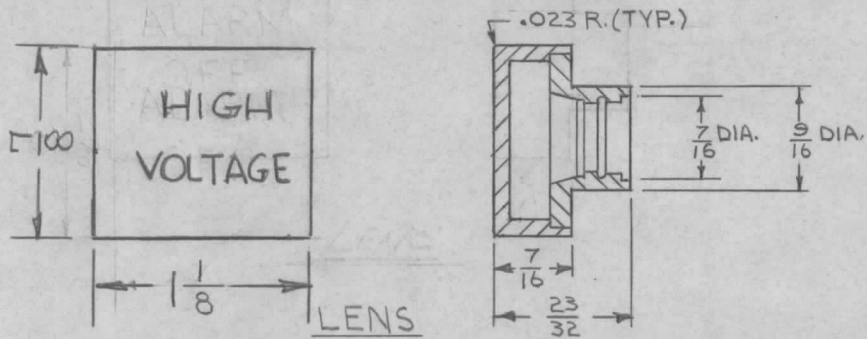


TMC P/N	MFG. P/N	COLOR	MATERIAL	TEMP.
LI114-W	01-95191	WHITE	TENITE	140-160° F
LI114-R	01-900823	RED	"	"
LI114-G	01-900824	GREEN	"	"
LI114-B	01-951914	BLUE	PLEXIGLAS	160-180° F
LI114-A	01-951916	AMBER	"	"



ENGRAVING CODE	
1	HIGH VOLTAGE
2	READY
3	ALARM OFF

LI 114

### SPECIFICATIONS

ILLUMINATION : TRANSLUSCENT SOLID COLORED. COLOR VISIBLE IN UNLIT CONDITION.

MATERIAL : SEE CHART

TEMP. RANGE : SEE CHART

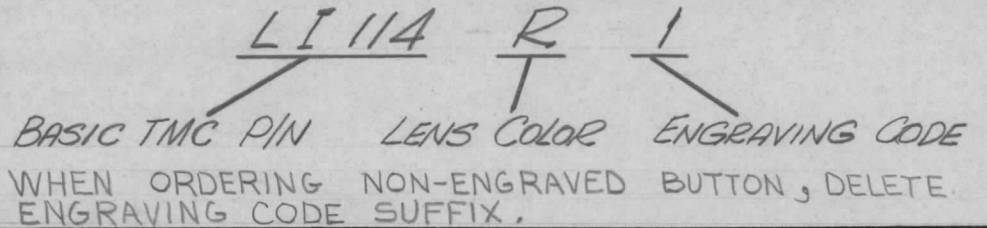
ENGRAVING : 1/8 HIGH GOTHIC, WIDTH OF STROKE .020, BLACK FILL. CHARACTERS MAY BE ENGRAVED OR HOT STAMPED

MAX. CHARACTERS PER LINE : 8

MAX. NUMBER OF LINES : 4

USED WITH : TS184

### TMC PART NO. TO BE IN FOLLOWING FORM:



SYM	DESCRIPTION	DATE	CH. NO.	DRAFTS	CHECKER	ENG. APP.
⊗	ORIGINAL RELEASE FOR PRODUCTION	12/1/66	—	lflb		jle
X3	MFG. PART NOS CHANGED	11/28/66	X3	RE	Joe	
X2	DIM. 1/8 & 7/8 REVERSED	8/29/66	—	Jc	JCB	
X1	ENGRAVING CODE CHART #3 WAS "ALARM OFF"	8/22/66	—	Jc	JCB	M

REQ. UNIT	ITEM	PART NO.	DESCRIPTION	SYMBOL
—	—	—	THE TECHNICAL MATERIEL CORP. MAMARONECK, NEW YORK	
—	—	—	LENS, INDICATOR	
—	—	—		
—	—	—		
—	—	—		
—	—	—		

UNLESS OTHERWISE SPECIFIED DIMENSIONS ARE IN INCHES AND INCLUDE CHEMICALLY APPLIED OR PLATED FINISHES

SCALE *A*

CODE *C*

5401-282  
(01-9519)

LI 114

7-25-66 H.AUSTIN

11/29/66 Joe

11/29/66 JCB

TYPE & TEMPER *A* HEAT TREAT. SPEC. *A* DRAWN *H.AUSTIN* CHECKED *Joe* FINAL APPROVAL *M.M. HAY*

FINISH & SPEC. NO. *A* ELEC. DES. APP. *JCB* MECH. DES. APP. *JCB*