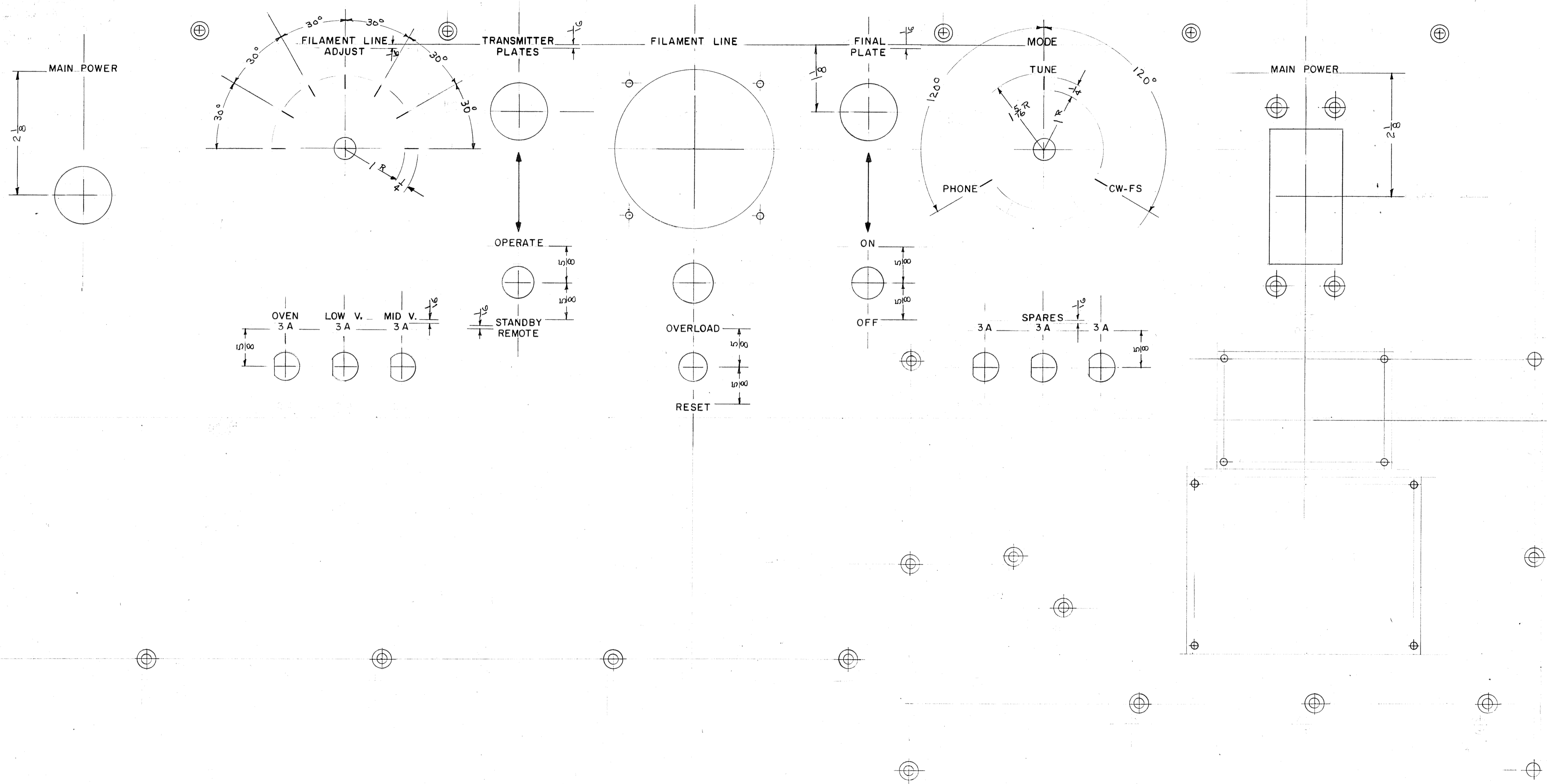


IF IT IS FOUND DESIRABLE TO CHANGE ANY TOLERANCE, OR OTHER DETAIL SPECIFIED ON THIS DRAWING NOTIFY THE PURCHASER PROMPTLY.  
 MAXIMUM ALLOWABLE TOLERANCES HAVE BEEN DETERMINED AND DEVIATIONS WILL BE CAUSE FOR REJECTION. REMOVE ALL BURRS AND SHARP EDGES

31



NOTE:  
 ENGRAVING TO BE GOTHIC, WHITE FILLED  
 LETTER HEIGHT 5/32  
 STROKE DEPTH .010  
 STROKE WIDTH .020

NOTICE TO PERSONS RECEIVING THIS DRAWING  
 THE TECHNICAL MATERIEL CORPORATION claims proprietary right in the material disclosed hereon. This drawing is issued in confidence for engineering information only and may not be reproduced or used to manufacture anything shown hereon without permission from THE TECHNICAL MATERIEL CORPORATION to the user. This drawing is loaned for mutual assistance and is subject to recall at any time.

Property of:  
 THE TECHNICAL MATERIEL CORPORATION  
 MAMARONECK, NEW YORK

ISSUE	ITEM	CHANGED FROM	DATE	CH. NO.	DRAFTS	CHECKER	ENG. APP.
A	1	MODE Added	4/21/54	1		A.J.J.	
TOLERANCES		SCALE:					
ALL	DEC. DIM.	±	DRILL PUNCH, COMMERCIAL STOCK				
OTHERS	FRAC. DIM.	±	SIZES AND MANUFACTURERS				
	ANGULAR DIM.	±	TOLERANCES ARE NOT INCLUDED.				

1	RTP	PROJECT NO.	8/11/55	DATE
REV.	NO.	MODEL	ASSY. NO.	DATE
USED ON				

REF. MS-670

REQ. ITEM	PART NO.	DESCRIPTION	SYMBOL
THE TECHNICAL MATERIEL CORP. MAMARONECK, NEW YORK			
STOCK SIZE			
ENGRAVING, FRONT PANEL			
MATERIAL WEIGHT PER PC			
POWER SUPPLY GPT-750			
TYPE & TEMPER			
DRAWN		ELEC. DES. APP.	
CHECKED		MECH. DES. APP.	
HEAT TREAT. SPEC.			
FINISH & SPEC. NO.			
			LD-235 A

LD-235 A