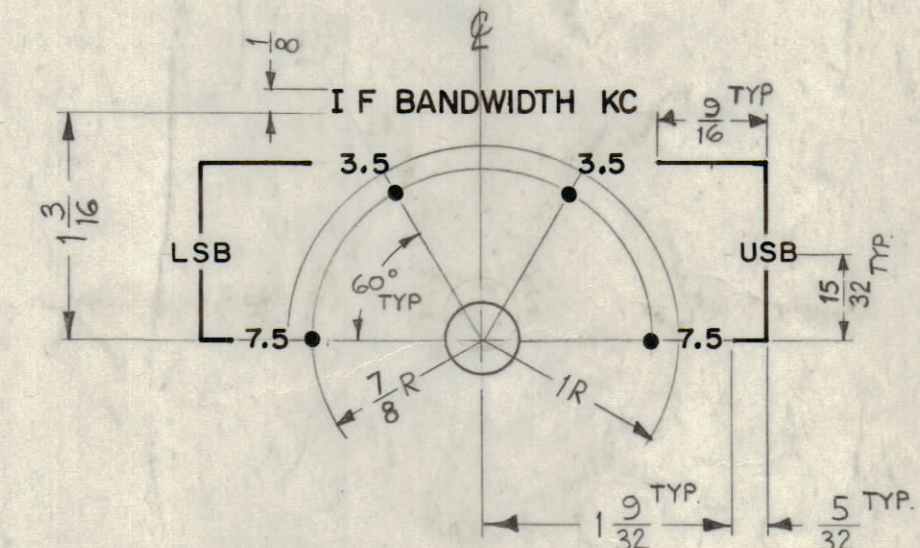
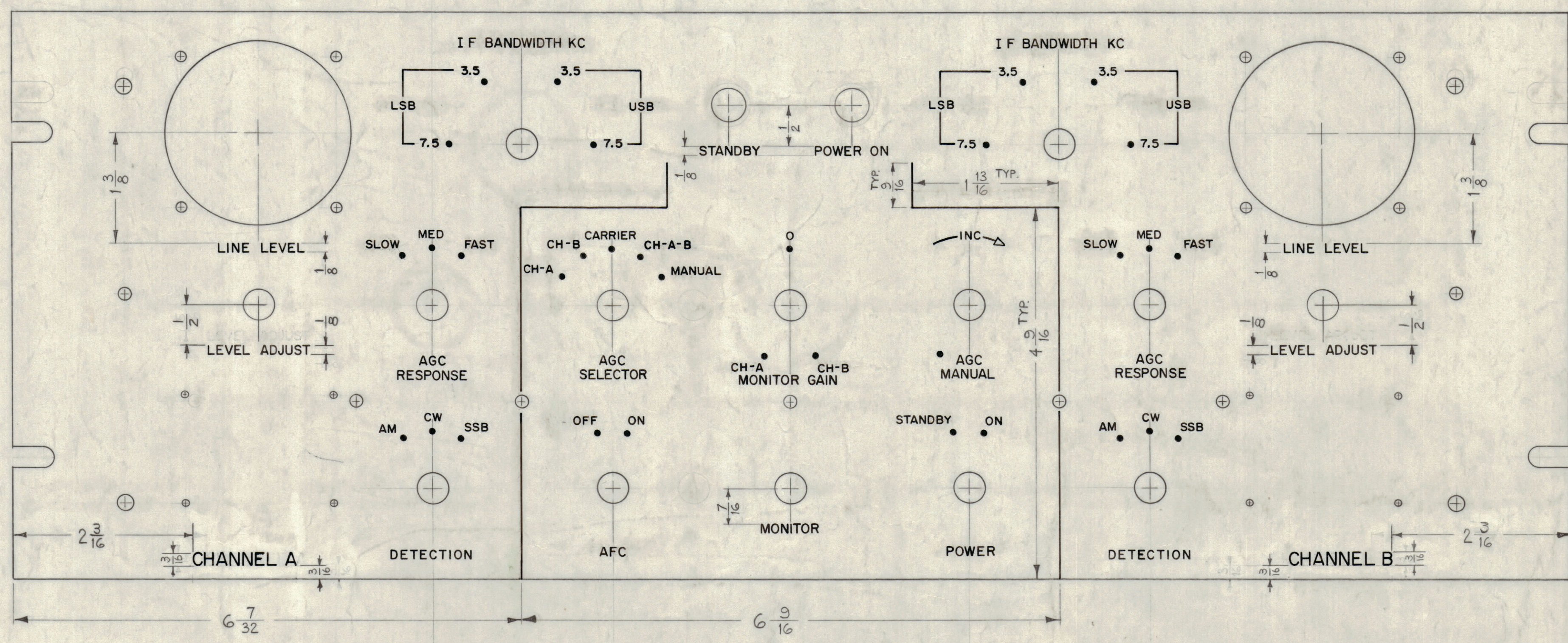
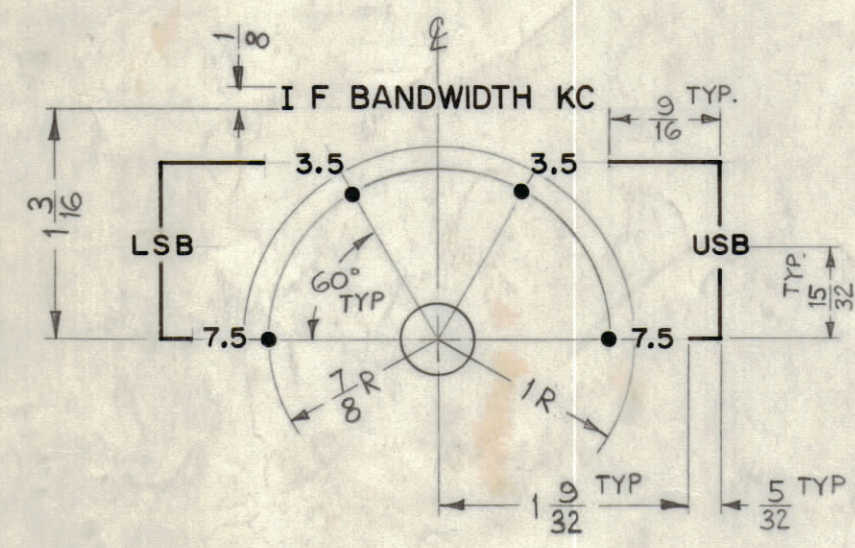
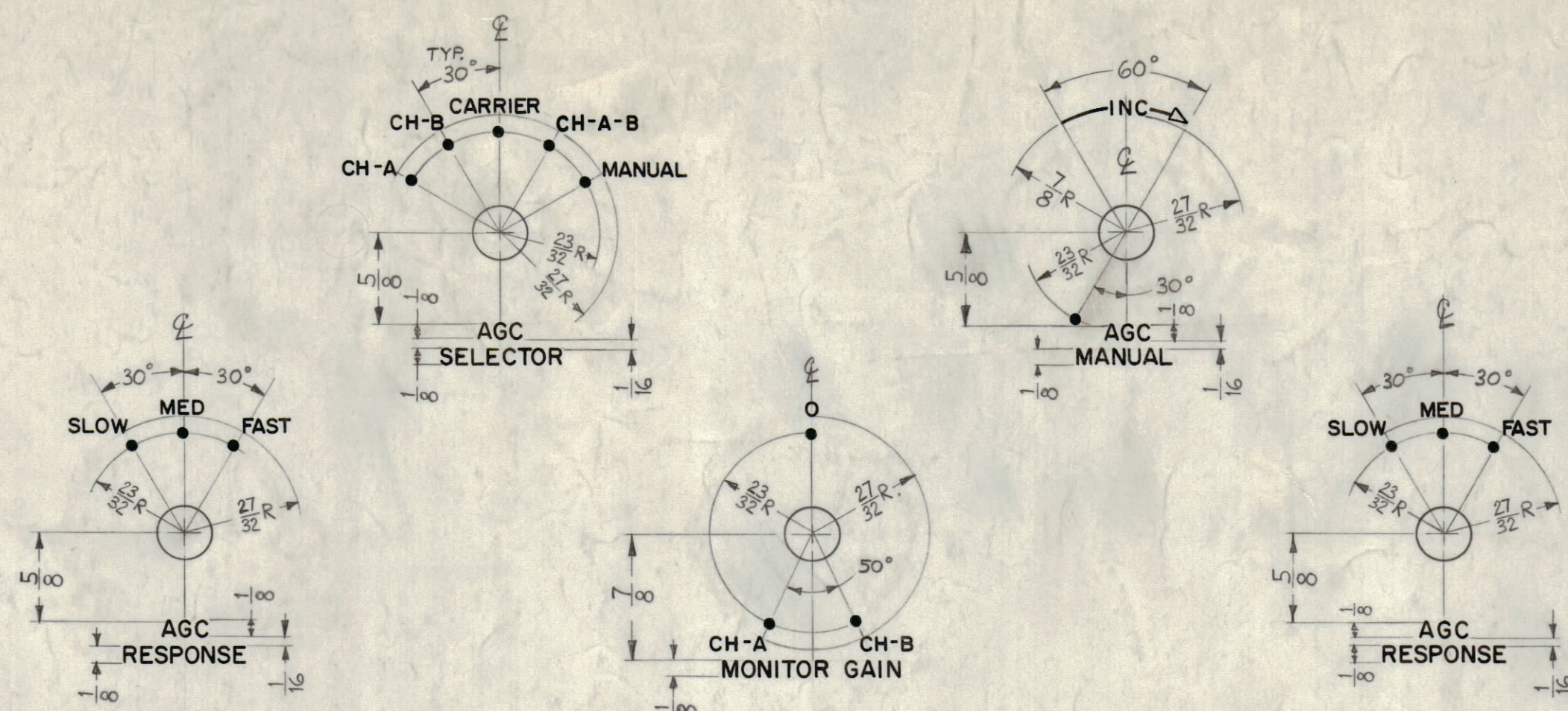


NOTICE TO PERSONS RECEIVING THIS DRAWING

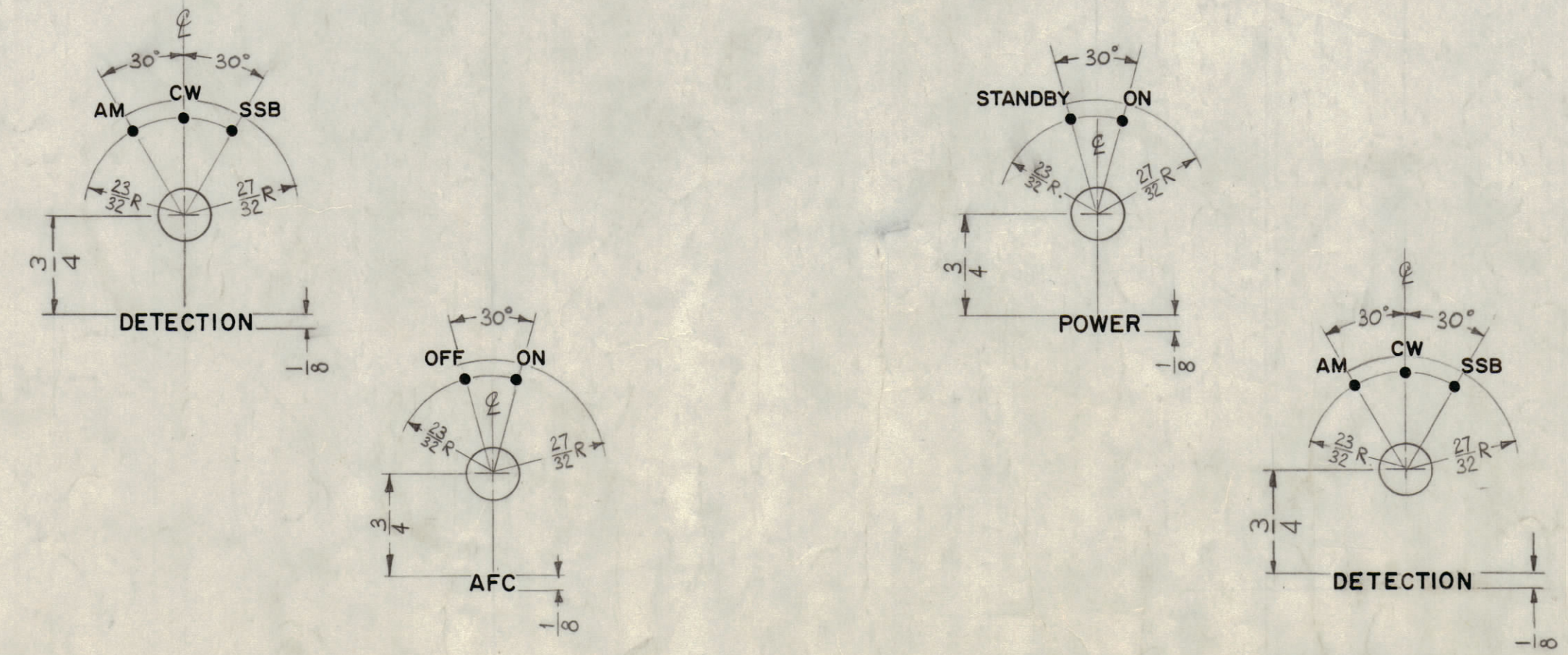
THE TECHNICAL MATERIEL CORPORATION claims proprietary right in the material disclosed hereon. This drawing is to be used in connection with the engineering information only and may not be used for the design or manufacture of anything shown hereon without permission from THE TECHNICAL MATERIEL CORPORATION to the user. This drawing is loaned for mutual assistance and is subject to recall at any time.

Property of:
THE TECHNICAL MATERIEL CORPORATION
MAMARONECK, NEW YORK



- UNLESS OTHERWISE SPECIFIED -
- 1- ALL ENGRAVING TO BE $\frac{3}{32}$ WHITE FILLED GOTHIC.
 - 2- ALL DOTS TO BE WHITE FILLED.
 - 3- ALL LINES TO BE WHITE FILLED.
 - 4- ALL ARROWHEADS $\frac{3}{32} \times \frac{5}{32}$ WHITE OUTLINED FILLED.

LETTER HEIGHT	DEPTH OF STROKE	WIDTH OF STROKE
3/32	.010	.015
1/8	.010	.020
3/16	.010	.025
DOTS	.010	1/16
LINES	.010	.015
ARROWHEADS	.010	



NOTE: LETTERING, REAR OF FRONT PANEL IS DRAWN ON 4 SIZE SHEET (SH. 2 of 2)

REF: MS-2690 (8)

SYM	ZONE	DESCRIPTION	DATE	CH. NO.	DRAFTS	CHECKER	ENG. APP.
D		CH-A/B RELOC. (23/16 WAS 2 7/16)	4-9-64	16593	A.M.		
C		SEE SHEET 2 of 2 REVISION "C"	1-1-63	8155			
B		ENGRAVING LEVEL ADJUST RELOCATED (2 PLACES)	1-15-63	8004			
A		"DETECTION" ADDED BELOW BOTH "AM, CW, SSB"	11-3-61	5818			

UNLESS OTHERWISE SPECIFIED:
DIMENSIONS ARE IN INCHES
TOLERANCES ON FRACTIONS $\pm 1/64$ DECIMALS $\pm .005$ ANGLES $\pm 1/2^\circ$

SCALE
MAXIMUM ALLOWABLE TOLERANCES HAVE BEEN DETERMINED AND ANY DEVIATIONS WILL BE CAUSE FOR REJECTION. REMOVE ALL BURRS & SHARP EDGES

REQ. PER UNIT	MODEL	SECTION	ASSY. NO.	DATE	FINISH & SPEC. NO.	ELI.C. DES. APP.	MECH. DES. APP.	SHEET	OF
1	SBS-1			10-9-61				1	2

THE TECHNICAL MATERIEL CORP. MAMARONECK, NEW YORK
ENGRAVING, FRONT PANEL
DRAWN: [Signature] CHECKED: [Signature] FINAL APPROVAL: [Signature]
LD-989

LD-989