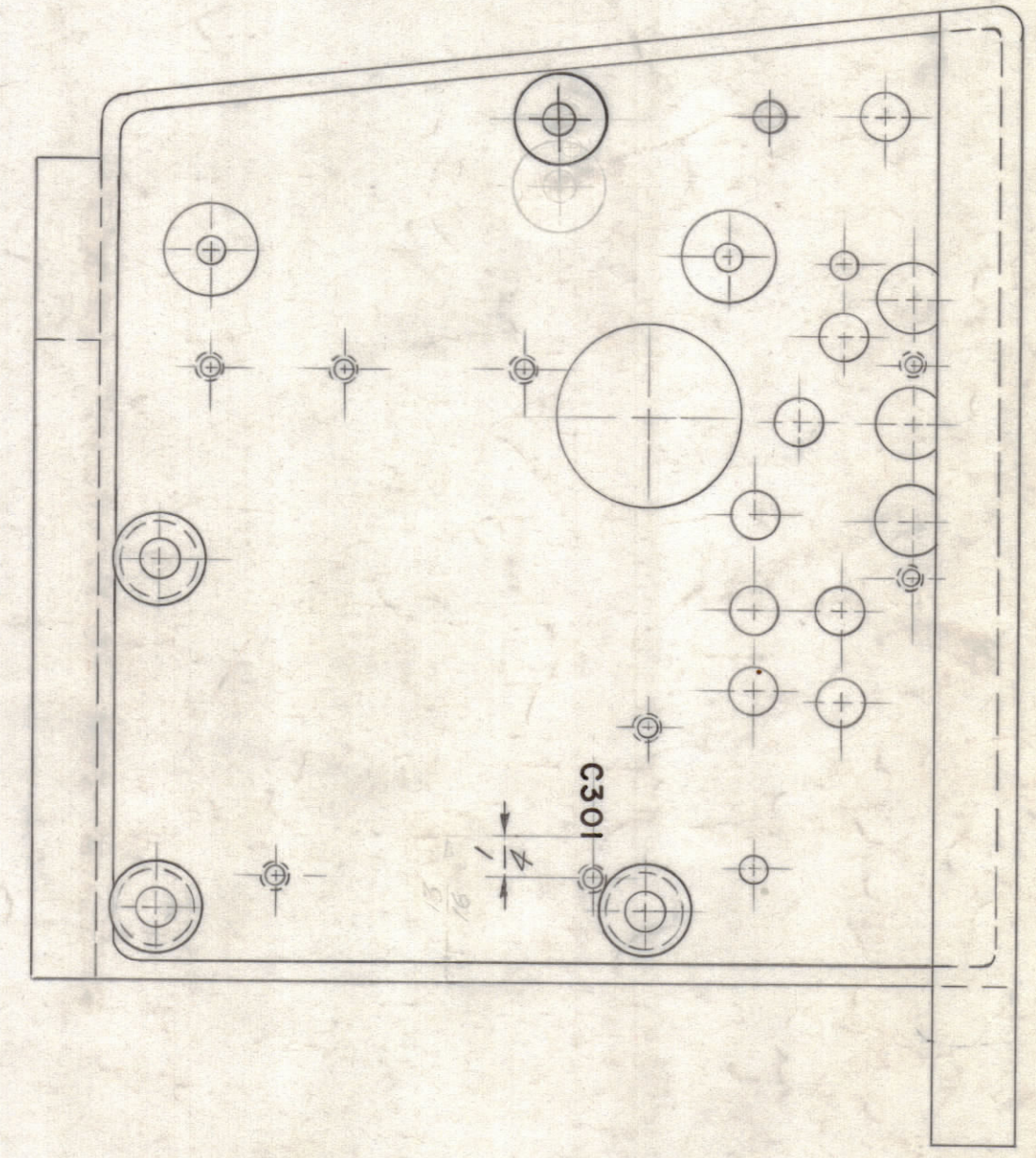
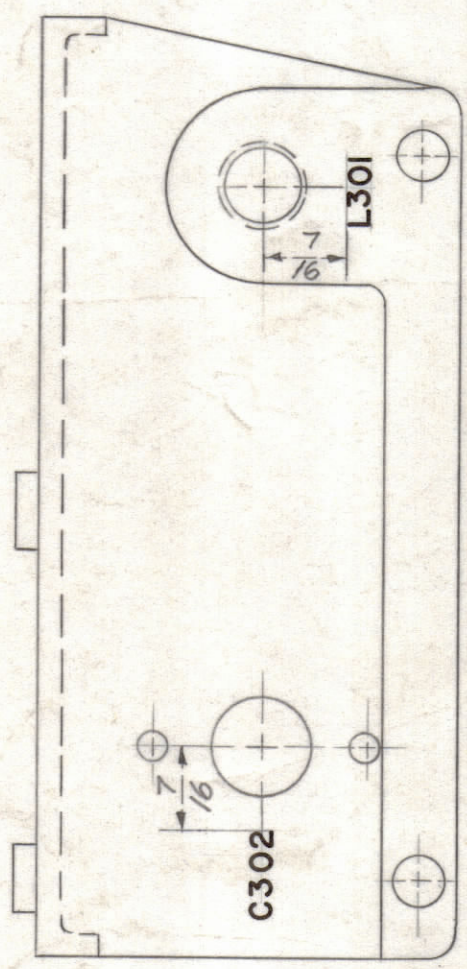
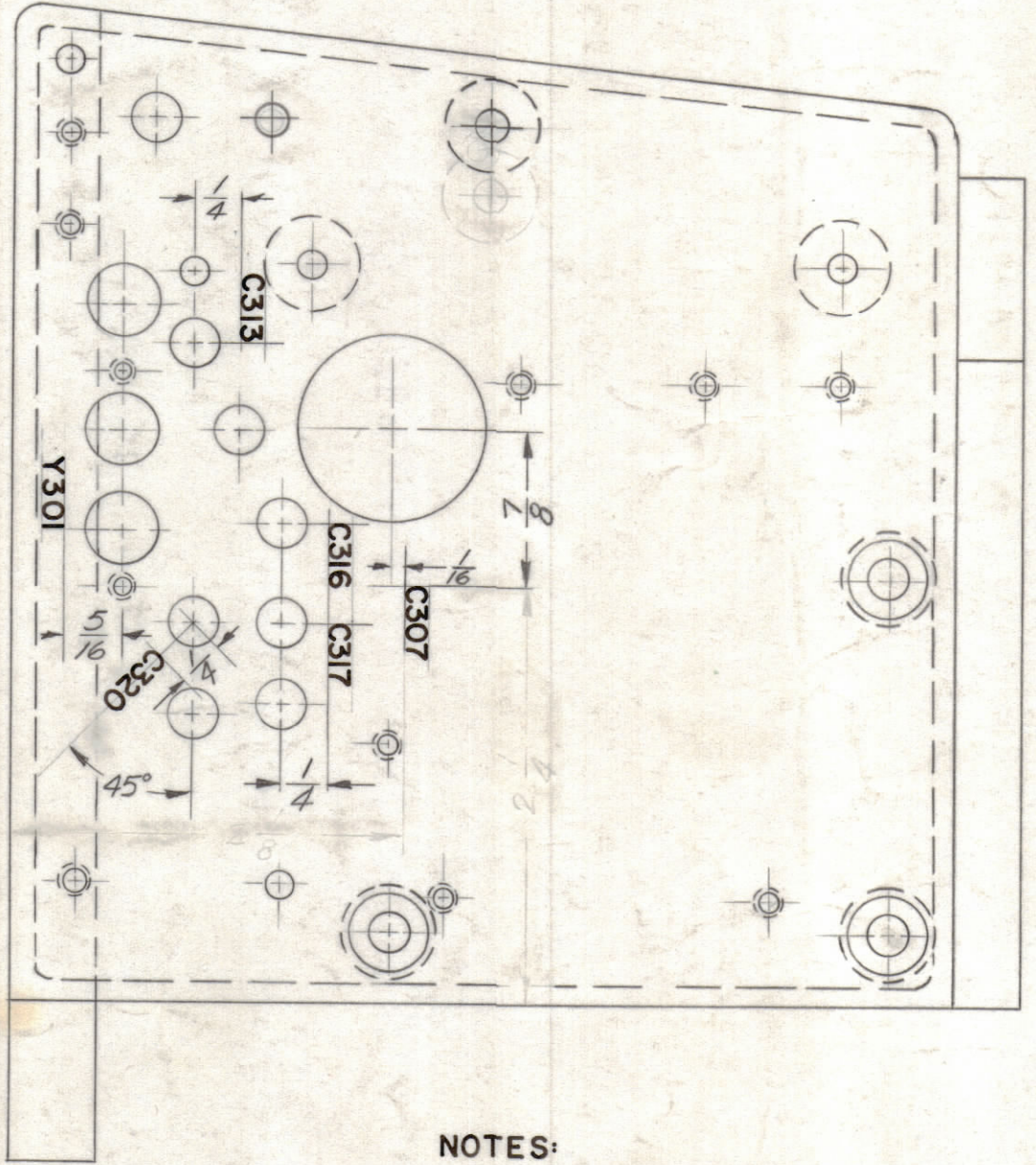
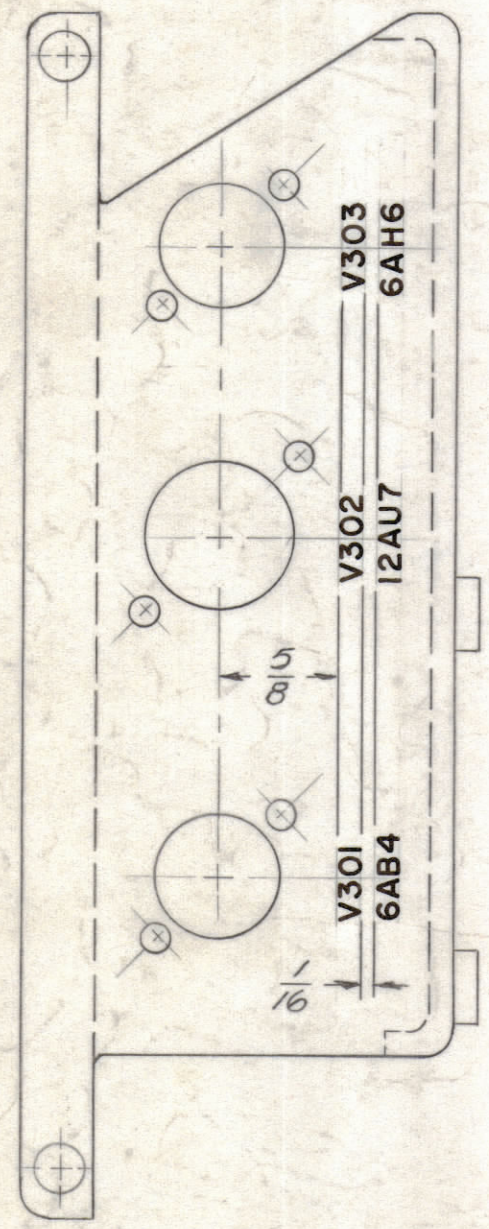
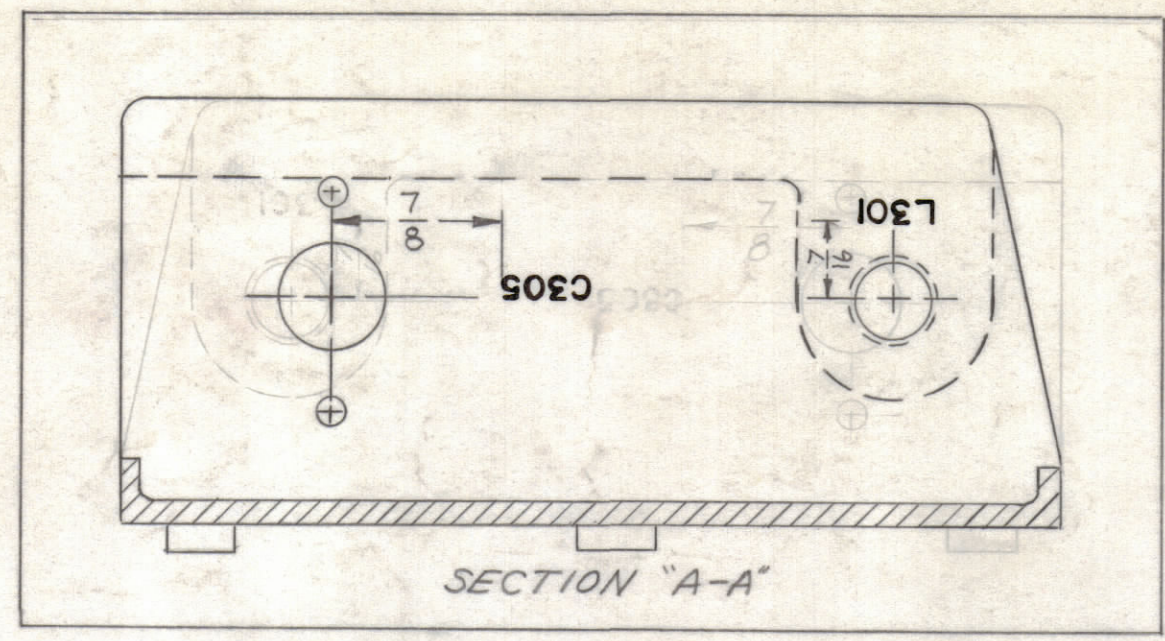
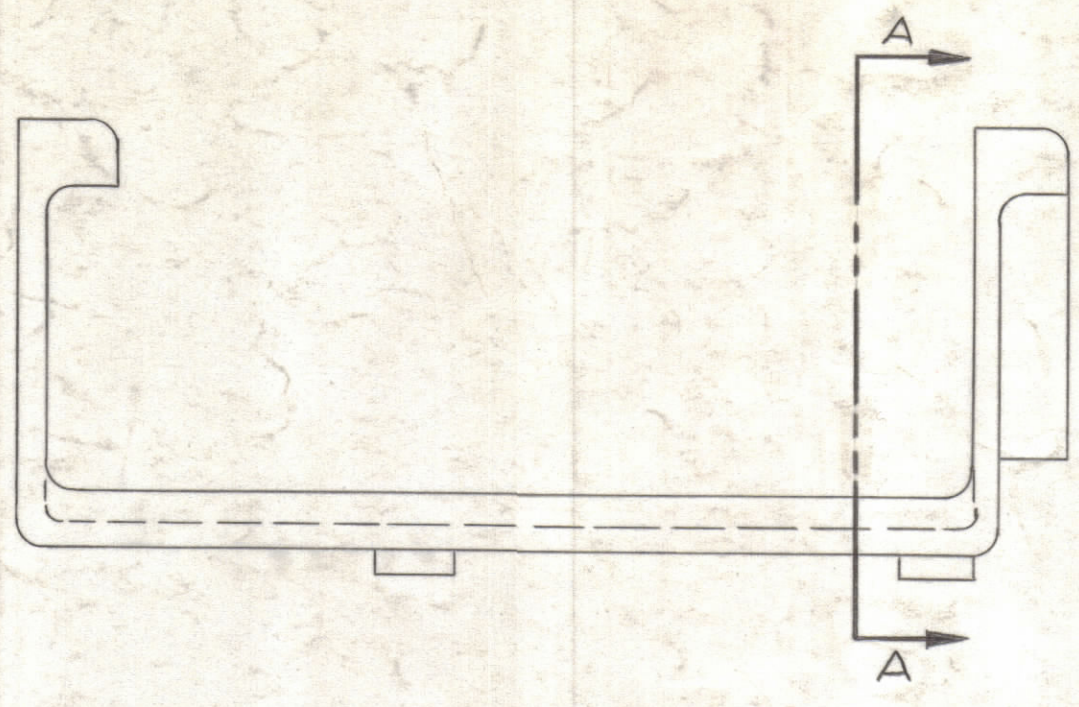


NOTICE TO PERSONS RECEIVING THIS DRAWING

THE TECHNICAL MATERIEL CORPORATION claims proprietary right in the material disclosed hereon. This drawing is issued in confidence for engineering information only and may not be reproduced or used to manufacture any thing shown hereon without permission from THE TECHNICAL MATERIEL CORPORATION to the user. This drawing is loaned for mutual assistance and is subject to recall at any time.

Property of:
THE TECHNICAL MATERIEL CORPORATION
MAMARONECK, NEW YORK



NOTES:

ALL LETTERING TO BE 1/8 HIGH, BLACK GOTHIC, MARKING PROCESS: AS PER TMC SPECIFICATION S-727

UNLESS OTHERWISE SPECIFIED, ALL LETTER GROUPS TO BE CENTERED ON HOLES OR INDICATING LINES.

REF: TMC # PM 619
PM 1335

SYM	ZONE	DESCRIPTION	DATE	CH. NO.	DRAFTS	CHECKER	ENG. APP.
B		ADDED PM 1335 (REF)	3/17/67	CC	RME		
A		SECTION "A-A" REVERSE 180°	2-12-65	13395			

UNLESS OTHERWISE SPECIFIED:
DIMENSIONS ARE IN INCHES
TOLERANCES ON
FRACTIONS ± 1/64 DECIMALS ± .005 ANGLES ± 1/2°

MAXIMUM ALLOWABLE TOLERANCES HAVE BEEN DETERMINED AND ANY DEVIATIONS WILL BE CAUSE FOR REJECTION. REMOVE ALL BURRS & SHARP EDGES

REQ. PER UNIT	MODEL	SECTION	ASS'Y. NO.	DATE
1	CMO-2	AO-	A	9-28-61
1	CMO-1	AO-	A	9-28-61

REQ. ITEM	PART NO.	DESCRIPTION	SYMBOL
		THE TECHNICAL MATERIEL CORP. MAMARONECK, NEW YORK	
		ALUMINUM	
		CHASSIS, OSCILLATOR LETTERING	
		TYPE & TEMPER	
		HEAT TREAT. SPEC.	
		S404 YEL. IRIDITE	
		FINISH & SPEC. NO.	
		ELEC. DES. APP.	
		MECH. DES. APP.	
		SHEET OF	