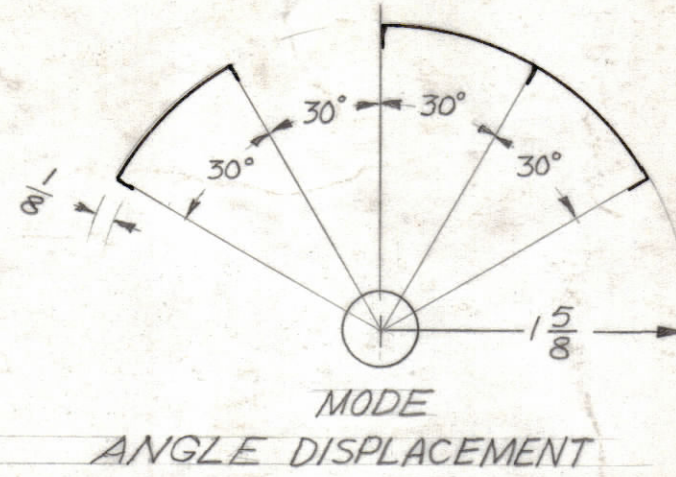
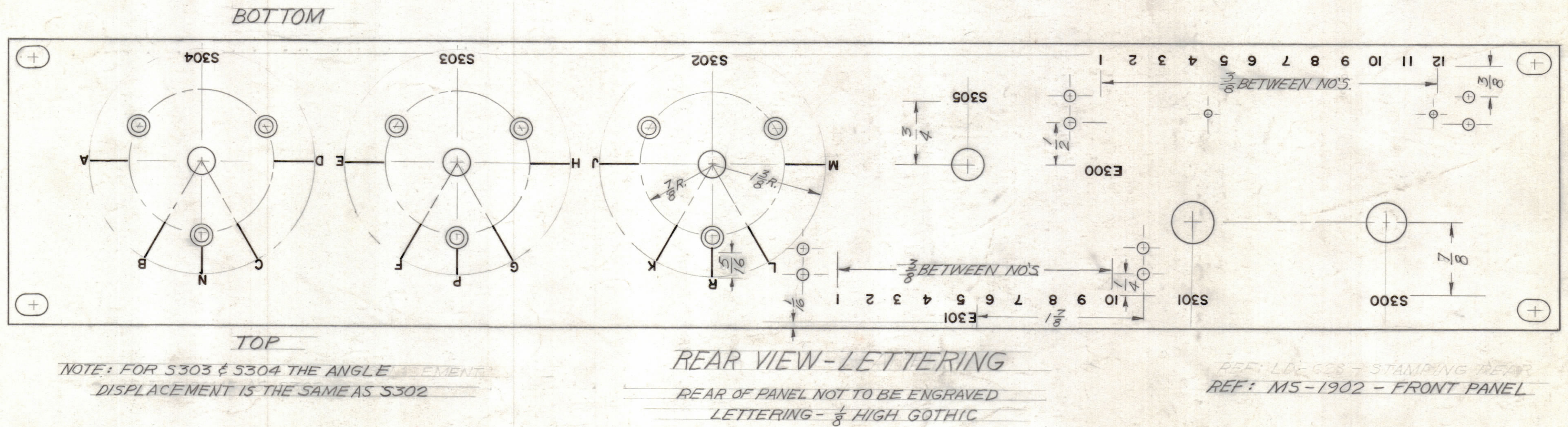
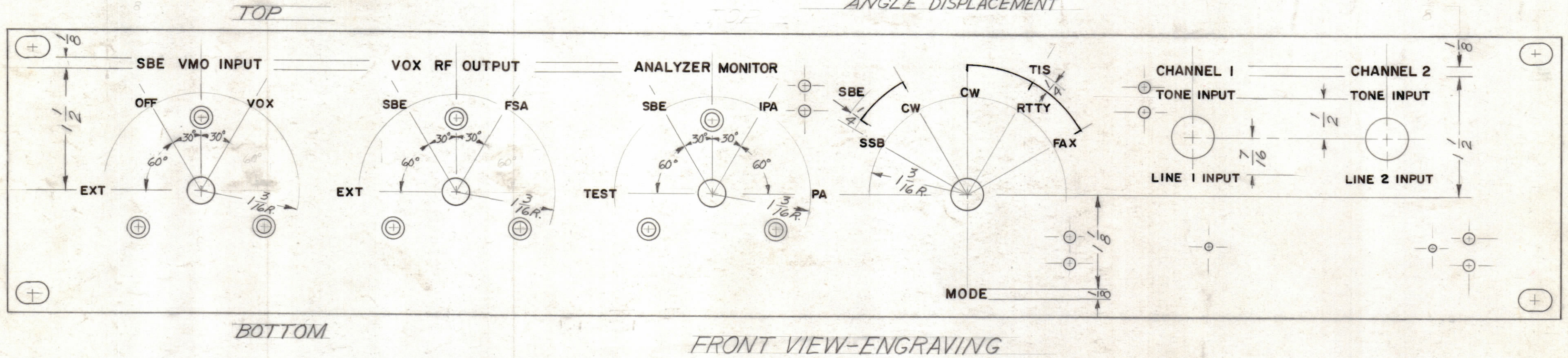


NOTES
 1-ALL LETTERS TO BE 3/32 HIGH UNLESS OTHERWISE SPECIFIED.
 2-ALL ENGRAVING TO BE WHITE FILLED GOTHIC.
 3-ALL LINES TO BE WHITE FILLED.

LETTER HEIGHT	DEPTH OF STROKE	WIDTH OF STROKE
3/32	.010	.015
1/8	.010	.020
SOLID LINES	.010	.015



NOTICE TO PERSONS RECEIVING THIS DRAWING
 THE TECHNICAL MATERIEL CORPORATION claims
 Proprietary right in the material disclosed herein.
 This drawing is issued in confidence for engineering
 information only and may not be re-produced or used
 in manufacture anything shown herein without per-
 mission from THE TECHNICAL MATERIEL CORPORA-
 TION to the user. This drawing is loaned for mutual
 assistance and is subject to recall at any time.
 Property of:
 THE TECHNICAL MATERIEL CORPORATION
 MAMARONECK, NEW YORK



SYM	ZONE	DESCRIPTION	DATE	CH. NO.	DRAFTS	CHECKER	ENG. APP.
UNLESS OTHERWISE SPECIFIED:			SCALE				
DIMENSIONS ARE IN INCHES			MAXIMUM ALLOWABLE TOLERANCES HAVE BEEN DETERMINED AND ANY DEVIATIONS WILL BE CAUSE FOR REJECTION. REMOVE ALL BURRS & SHARP EDGES				
TOLERANCES ON FRACTIONS ± 1/64			DECIMALS ± .005		ANGLES ± 1/2°		

REQ. PER UNIT	MODEL	SECTION	ASS'Y. NO.	DATE
	MCP-3			9-9-61

REQ. ITEM	PART NO.	DESCRIPTION	SYMBOL
STOCK SIZE		THE TECHNICAL MATERIEL CORP. MAMARONECK, NEW YORK	
MATERIAL		ENGRAVING & LETTERING	
TYPE & TEMPER		FRONT PANEL MCP-3	
HEAT TREAT. SPEC.		wh	ab
FINISH & SPEC. NO.		DRAWN	CHECKED
ELEC. DES. APP.		FINAL APPROVAL	
MECH. DES. APP.		LD-968	
SHEET OF		LD-968	