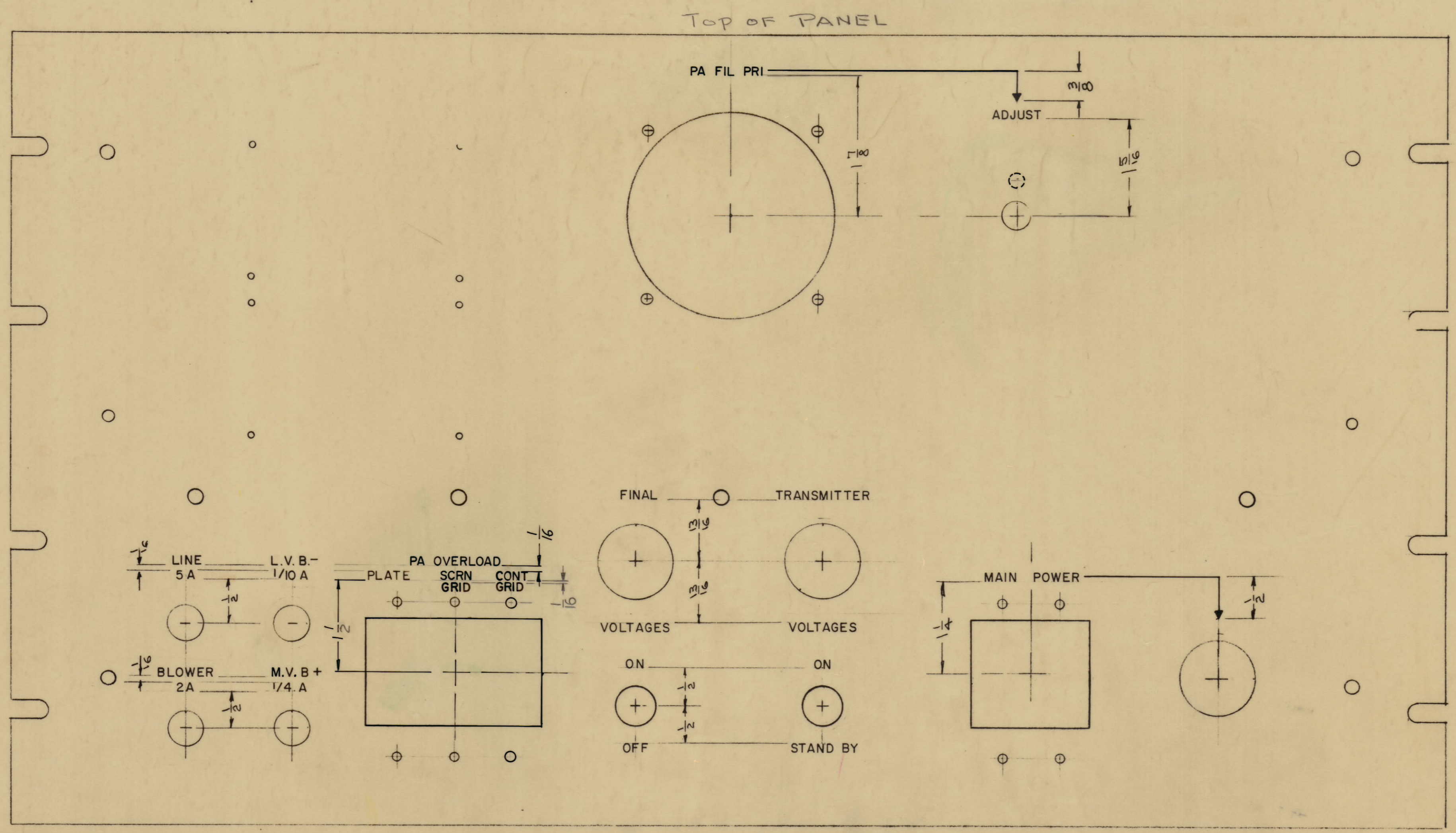


IF IT IS FOUND DESIRABLE TO CHANGE ANY TOLERANCE OR OTHER DETAIL SPECIFIED ON THIS DRAWING NOTIFY THE PURCHASER PROMPTLY.
 MAXIMUM ALLOWABLE TOLERANCES HAVE BEEN DETERMINED AND DEVIATIONS WILL BE CAUSE FOR REJECTION.
 REMOVE ALL BURRS AND SHARP EDGES

NOTICE TO PERSONS RECEIVING THIS DRAWING
 THE TECHNICAL MATERIEL CORPORATION claims proprietary right in the material disclosed hereon. This drawing is issued in confidence for engineering information only and may not be re-produced or used to manufacture anything shown hereon without permission from THE TECHNICAL MATERIEL CORPORATION to the user. This drawing is loaned for individual assistance and is subject to recall at any time.
 Property of:
 THE TECHNICAL MATERIEL CORPORATION
 MAMARONECK, NEW YORK



FRONT VIEW SHOWN

NOTE
 ALL LETTERING 1/8 HIGH GOTHIC, WHITE FILLED.
 ALL ARROWHEADS TO BE 1/8 x 1/8 x 1/8 TRIANGLE, WHITE FILLED.
 ALL LINES WHITE FILLED.

LETTER HEIGHT	DEPTH OF STROKE	WIDTH OF STROKE
1/8	.010	.020
ARROWHEADS	.010	—
SOLID LINES	.010	.015

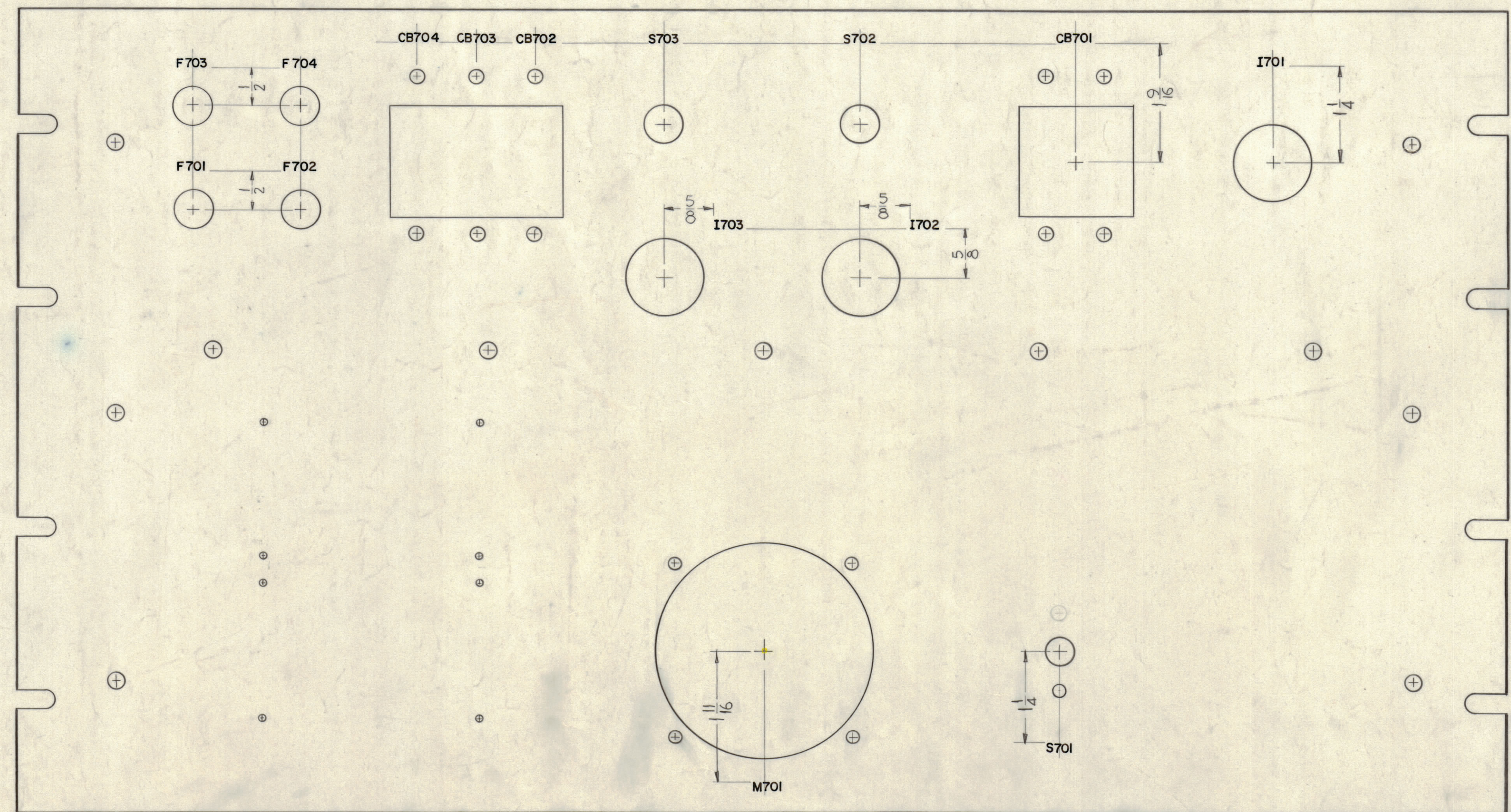
A	1	MADE TO AGREE W/MS2601-C	11-4-61	12865	lsb	rk	rs
ISSUE	ITEM	CHANGED FROM	DATE	CH. NO.	DRAFTS	CHECKER	ENG. APP.
TOLERANCES		SCALE:					
ALL OTHERS	DEC. DIM. ±	DRILL PUNCH COMMERCIAL STOCK SIZES AND MANUFACTURERS TOLERANCES ARE NOT INCLUDED.					
	FRAC. DIM. ±						
	ANGULAR DIM. ±						

1	PS-4A	PAL-1KA		6-1-61
REQ. PER UNIT	MODEL	PROJECT NO.	ASSY. NO.	DATE
USED ON				

REF: MS-2601

REQ. ITEM	PART NO.	DESCRIPTION	SYMBOL
		THE TECHNICAL MATERIEL CORP. MAMARONECK, NEW YORK	
		ENGRAVING, FRONT PANEL	
		PS-4A	
		D.S.M. RK	
		DRWN	ELC. DES. APP.
		CHKD	MCH. DES. APP.
		CONRAD KORN	FINAL APPROVAL
		SHEET 1 OF 2	
		LD-942	A
		FINISH & SPEC. NO.	

LD-942 A



(TOP OF PANEL)
REAR VIEW SHOWN

MARKING PROCESS: AS PER TMC SPECIFICATION S-727

NOTE ~ ALL LETTERING 1/8 HIGH BLACK GOTHIC

NOTICE TO PERSONS RECEIVING THIS DRAWING

THE TECHNICAL MATERIEL CORPORATION claims proprietary right in the material disclosed herein. This drawing is issued in confidence for engineering information only and may not be reproduced or used to manufacture anything shown hereon without permission from THE TECHNICAL MATERIEL CORPORATION to the user. This drawing is loaned for mutual assistance and is subject to recall at any time.

Property of:
THE TECHNICAL MATERIEL CORPORATION
MAMARONECK, NEW YORK

REF: MS-2601

SYM	ZONE	DESCRIPTION	DATE	CH. NO.	DRAFTS	CHECKER	ENG. APP.
A	-	CHANGED TO AGREE WITH MS2601 REV C	11.4.64	12865	JB	W	20
UNLESS OTHERWISE SPECIFIED:			SCALE FULL (DO NOT SCALE)				
DIMENSIONS ARE IN INCHES			MAXIMUM ALLOWABLE TOLERANCES HAVE BEEN DETERMINED AND ANY DEVIATIONS WILL BE CAUSE FOR REJECTION. REMOVE ALL BURRS & SHARP EDGES				
TOLERANCES ON			FRACTIONS ± 1/64 DECIMALS ± .005 ANGLES ± 1/2°				

REQ. PER UNIT	MODEL	SECTION	ASBY. NO.	DATE
1	PS-4A	PAI-1KA		6-5-61

REG. ITEM	PART NO.	DESCRIPTION	SYMBOL
		THE TECHNICAL MATERIEL CORP. MAMARONECK, NEW YORK	
		LETTERING, REAR OF FRONT PANEL	
		PS-4A	
		LD-942	A

LD-942 A