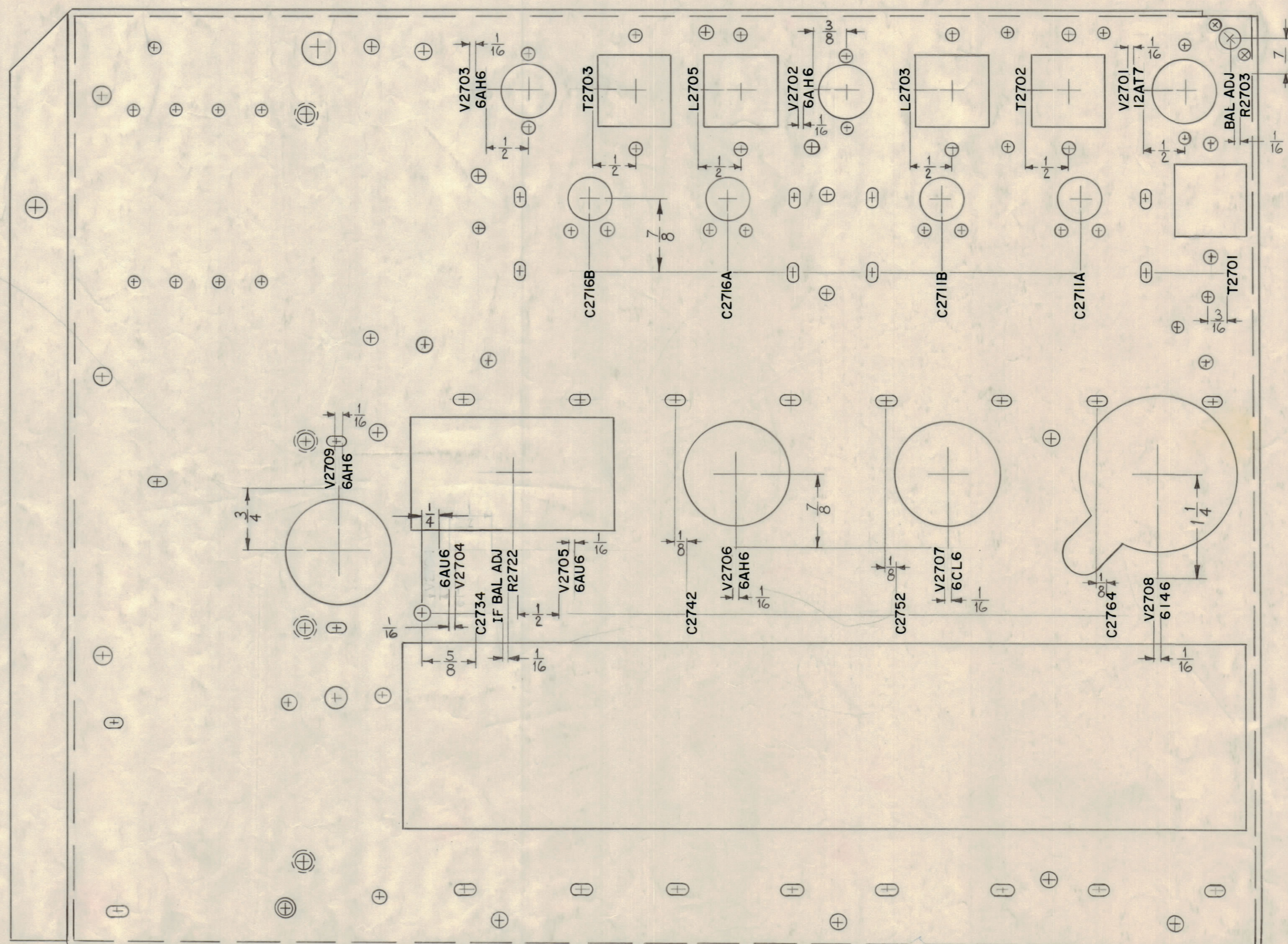
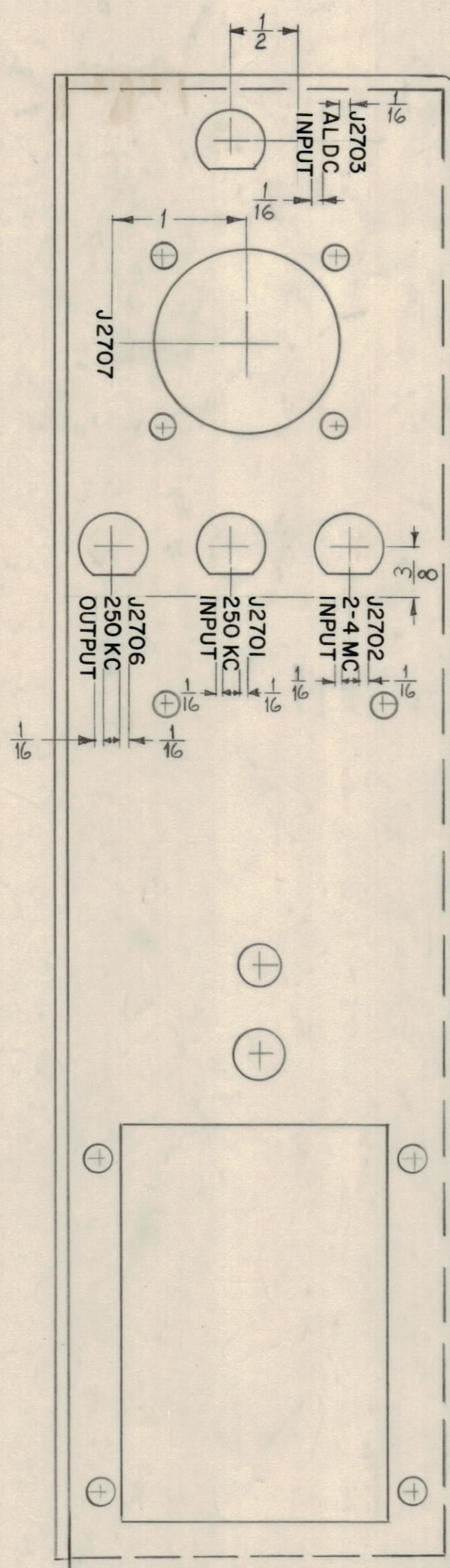


EXTERIOR VIEW SHOWN



ALL LETTERING TO BE 1/8 HIGH BLACK GOTHIC.

MARKING PROCESS: AS PER TMC SPECIFICATION S-727

NOTICE TO PERSONS RECEIVING THIS DRAWING

THE TECHNICAL MATERIEL CORPORATION claims proprietary right in the material disclosed herein. This drawing is issued in confidence for engineering information only and may not be reproduced or used to manufacture anything shown hereon without permission from THE TECHNICAL MATERIEL CORPORATION to the user. This drawing is loaned for mutual assistance and is subject to recall at any time.

Property of:  
THE TECHNICAL MATERIEL CORPORATION  
MAMARONECK, NEW YORK

REF. MS-2593(R)

REQ. ITEM	PART NO.	DESCRIPTION	SYMBOL
STOCK SIZE			
MATERIAL			
TYPE & TEMPER			
HEAT TREAT. SPEC.			
FINISH & SPEC. NO.			
THE TECHNICAL MATERIEL CORP. MAMARONECK, NEW YORK <b>LETTERING, MAIN CHASSIS</b> TOP			
DRAWN		ELEC. DES. APP.	
CHECKED		MECH. DES. APP.	
		FINAL APPROVAL	
		LD-930 B	

REQ. PER UNIT	MODEL	SECTION	ABBY. NO.	DATE
1	CHG 2	MF/RF		5-26-61
USED ON				

ISSUE	ZONE	DESCRIPTION	DATE	CH. NO.	DRAFTS	CHECKER	ENGR. APP.
B	DS	RELOC. DIM. 1/4 FROM HOLE T2708 WAS T2704	12-18-64	13150	H.L.A.		
A	DS	V2704 RELOCATED	1/14/64	11847			

TOLERANCES

SCALE:

MAXIMUM ALLOWABLE TOLERANCES HAVE BEEN DETERMINED AND ANY DEVIATIONS WILL BE CAUSE FOR REJECTION. REMOVE ALL BURRS AND SHARP EDGES

LD-930 B