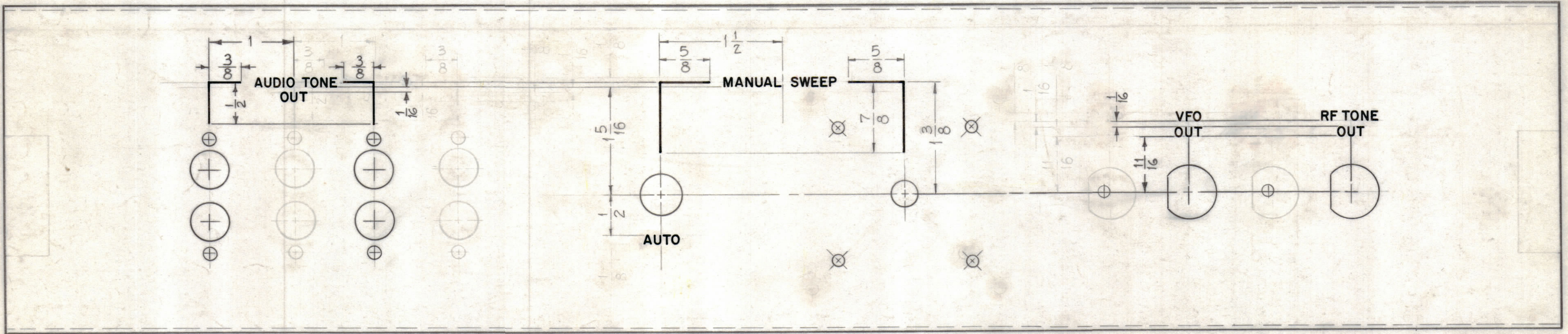


NOT TO BE RECEIVED RECEIVING THIS DRAWING

THE TECHNICAL MATERIEL CORPORATION claims proprietary right in the material disclosed herein. This drawing is issued in confidence for engineering information only and may not be reproduced or used to manufacture anything shown hereon without permission from THE TECHNICAL MATERIEL CORPORATION to the user. This drawing is loaned for mutual assistance and is subject to recall at any time.

Property of:
THE TECHNICAL MATERIEL CORPORATION
MAMARONECK, NEW YORK



FRONT VIEW SHOWN

UNLESS OTHERWISE SPECIFIED:

- 1- ALL LETTER GROUPS AND LINES TO BE CENTERED ON HOLES.
- 2- ALL LINES TO BE WHITE FILLED.
- 3- ALL LETTERING TO BE GOTHIC, 1/8 HIGH, WHITE FILLED.

Height of Letter	Depth of Stroke	Width of Stroke
1/8	.010	.020
LINES	.010	.015

SYM	ZONE	DESCRIPTION	DATE	CH. NO.	DRAFTS	CHECKER	ENG. APP.
B	B-3	REF. MS-2531 ADDED	8-4-61	5398	G.D.L.		S.M.
	A-4	MODEL WAS PTE-3					
	F-3	KNOCKOUTS DELETED					
A	F-2	VFO OUT & RF TONE OUT RELOCATED	3-10-61	4337	M.A.F.	J.C.S.	C.R.P.
	F-6	AUDIO TONE OUT RELOCATED					

UNLESS OTHERWISE SPECIFIED:
DIMENSIONS ARE IN INCHES
TOLERANCES ON
FRACTIONS ± 1/64 DECIMALS ± .005 ANGLES ± 1/2°

SCALE FULL, DO NOT SCALE
MAXIMUM ALLOWABLE TOLERANCES HAVE BEEN DETERMINED AND ANY DEVIATIONS WILL BE CAUSE FOR REJECTION. REMOVE ALL BURRS & SHARP EDGES

REQ. PER UNIT	MODEL	SECTION	ASS'Y. NO.	DATE
	RAK-7B			Z-22-61

REF: MS-2531

REQ. ITEM	PART NO.	DESCRIPTION	SYMBOL
		THE TECHNICAL MATERIEL CORP. MAMARONECK, NEW YORK	
STOCK SIZE		ENCRAVING, CENTER, FRONT PANEL	
MATERIAL			
John C. Biele		A.R.F.	
DRAWN	CHECKED	FINAL APPROVAL	
A.R.F.			LD-894 B
FINISH & SPEC. NO.		ELEC. DES. APP.	MECH. DES. APP.
		SHEET OF	