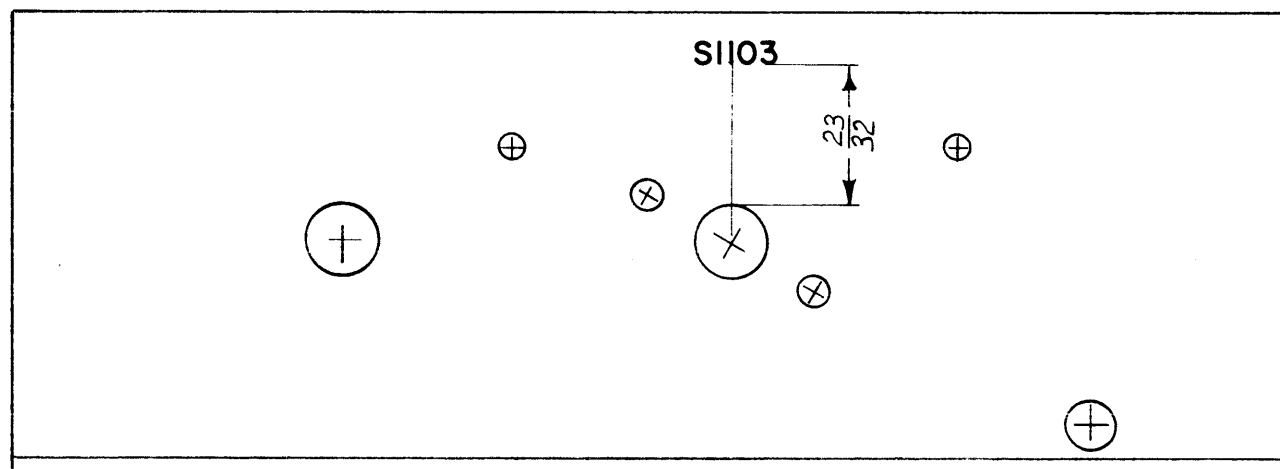
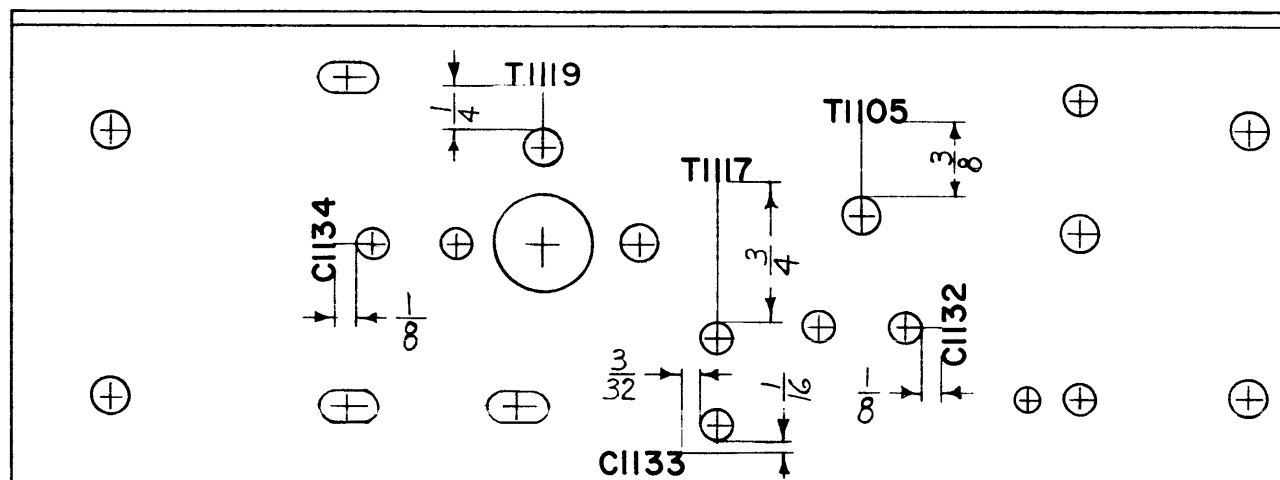
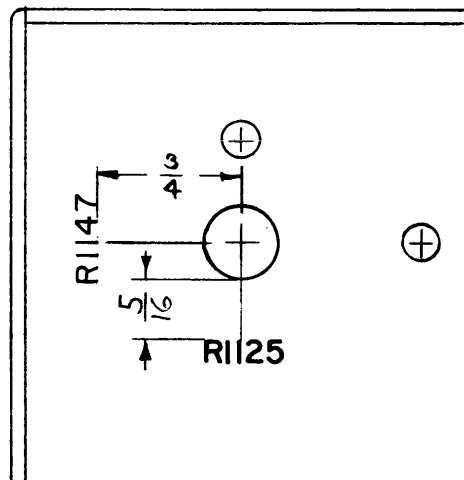


LD-860

A



NOTE TO PERSONS RECEIVING THIS DRAWING

THE TECHNICAL MATERIEL CORPORATION claims proprietary right in the material disclosed hereon. This drawing is issued in confidence for engineering information only and may not be reproduced or used to manufacture anything shown hereon without permission from THE TECHNICAL MATERIEL CORPORATION to the user. This drawing is loaned for mutual assistance and is subject to recall at any time.

Property of:  
**THE TECHNICAL MATERIEL CORPORATION**  
 MAMARONECK, NEW YORK

ALL LETTERING TO BE 1/8 HIGH BLACK

REF: MS-2397 (2)

A	R1147 Added (End view) T1119 was L1127 (TOP VIEW, CENTER)	12-14-60	3730	RU	<i>[Signature]</i>	<i>[Signature]</i>
SYM	DESCRIPTION	DATE	CH. NO.	DRAFTS	CHECKER	ENG. APP.
UNLESS OTHERWISE SPECIFIED: DIMENSIONS ARE IN INCHES TOLERANCES ON FRACTIONS ± 1/64    DECIMALS ± .005    ANGLES ± 1/2°		SCALE: MAXIMUM ALLOWABLE TOLERANCES HAVE BEEN DETERMINED AND ANY DEVIATIONS WILL BE CAUSE FOR REJECTION. REMOVE ALL BURRS AND SHARP EDGES				
1	CHG 1	MF/RF	11-21-60			
REQ. PER UNIT	MODEL	SECTION	ASS'Y. NO.	DATE	USED ON	

REQ.	ITEM	PART NO.	DESCRIPTION		SYMBOL
STOCK SIZE			THE TECHNICAL MATERIEL CORP. MAMARONECK, NEW YORK		
MATERIAL			LETTERING, #4 CHASSIS		
TYPE & TEMPER		HEAT TREAT. SPEC.	DRAWN	CHECKER	FINAL APPROVAL
FINISH & SPEC. NO.		ELEC. DES. APP.	MECH. DES. APP.	LD-860	A