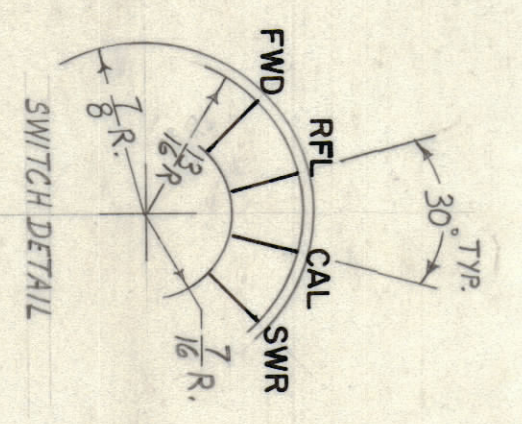
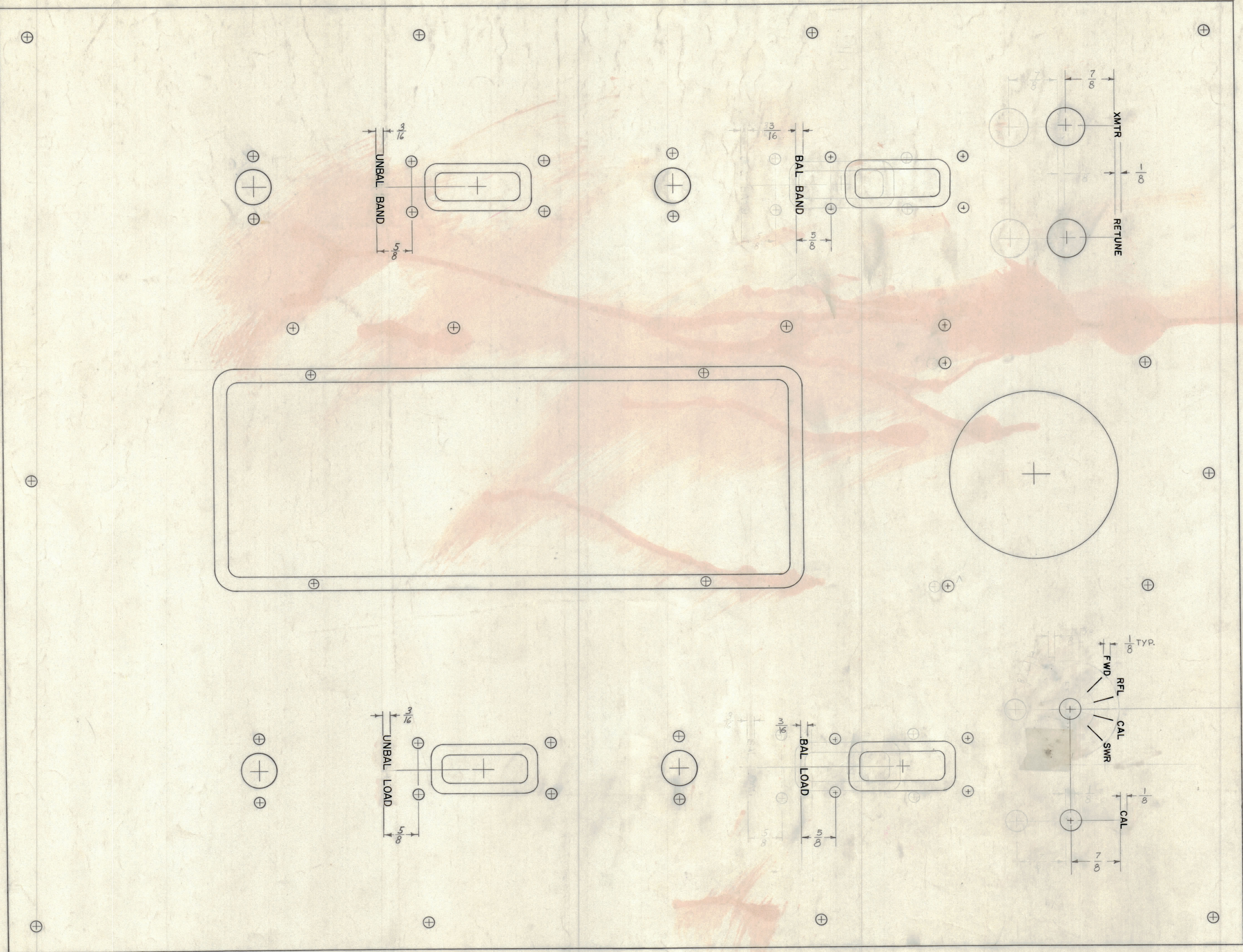


HEIGHT OF LETTER	DEPTH OF STROKE	WIDTH OF STROKE
1/8	.010	.020
3/16	.010	.025
LINES	.010	.015

- 1- ALL LETTERING TO BE WHITE FILLED GOTHIC.
- 2- ALL LINES TO BE WHITE FILLED.
- 3- ALL LETTER GROUPS TO BE CENTERED ON HOLES (OR SLOTS).



**NOTICE TO PERSONS RECEIVING THIS DRAWING**  
 THE TECHNICAL MATERIEL CORPORATION claims proprietary right in the material disclosed herein. This drawing is issued in confidence for engineering information only and may not be reproduced or used to manufacture anything shown hereon without permission from THE TECHNICAL MATERIEL CORPORATION to the user. This drawing is loaned for mutual assistance and is subject to recall at any time.  
 Property of:  
 THE TECHNICAL MATERIEL CORPORATION  
 MAMARONECK, NEW YORK

ISSUE NO.	DESCRIPTION	DATE	CH. NO.	DRAFTS	CHECKER	ENG. APP.
B	see sheet (2)	7-21-61	5292	BOL	RSW	DD
A	See Sheet (1)	4-24-61	-	RL	WSE	DB

TOLERANCES  
 DEC. DIM.  $\pm$   
 FRAC. DIM.  $\pm$   
 ANGULAR DIM.  $\pm$

SCALE:  
 MAXIMUM ALLOWABLE TOLERANCES HAVE BEEN DETERMINED AND ANY DEVIATIONS WILL BE CAUSE FOR REJECTION. REMOVE ALL BURRS AND SHARP EDGES

REQ. PER UNIT	MODEL	SECTION	ASSY. NO.	DATE
1	ACU			9-22-60

REF: MS-2421 (8)

REQ. ITEM	PART NO.	DESCRIPTION	SYMBOL
<b>THE TECHNICAL MATERIEL CORP.</b> MAMARONECK, NEW YORK			
FRONT PANEL, ENGRAVING			
MATERIAL			
TYPE & TEMPER			
HEAT TREAT. SPEC.			
FINISH & SPEC. NO.			

DRAWN: [Signature] ELEC. DES. APP. [Signature] MECH. DES. APP. [Signature]  
 CHECKED: [Signature] FINAL APPROVAL: [Signature]  
 LD-778 B