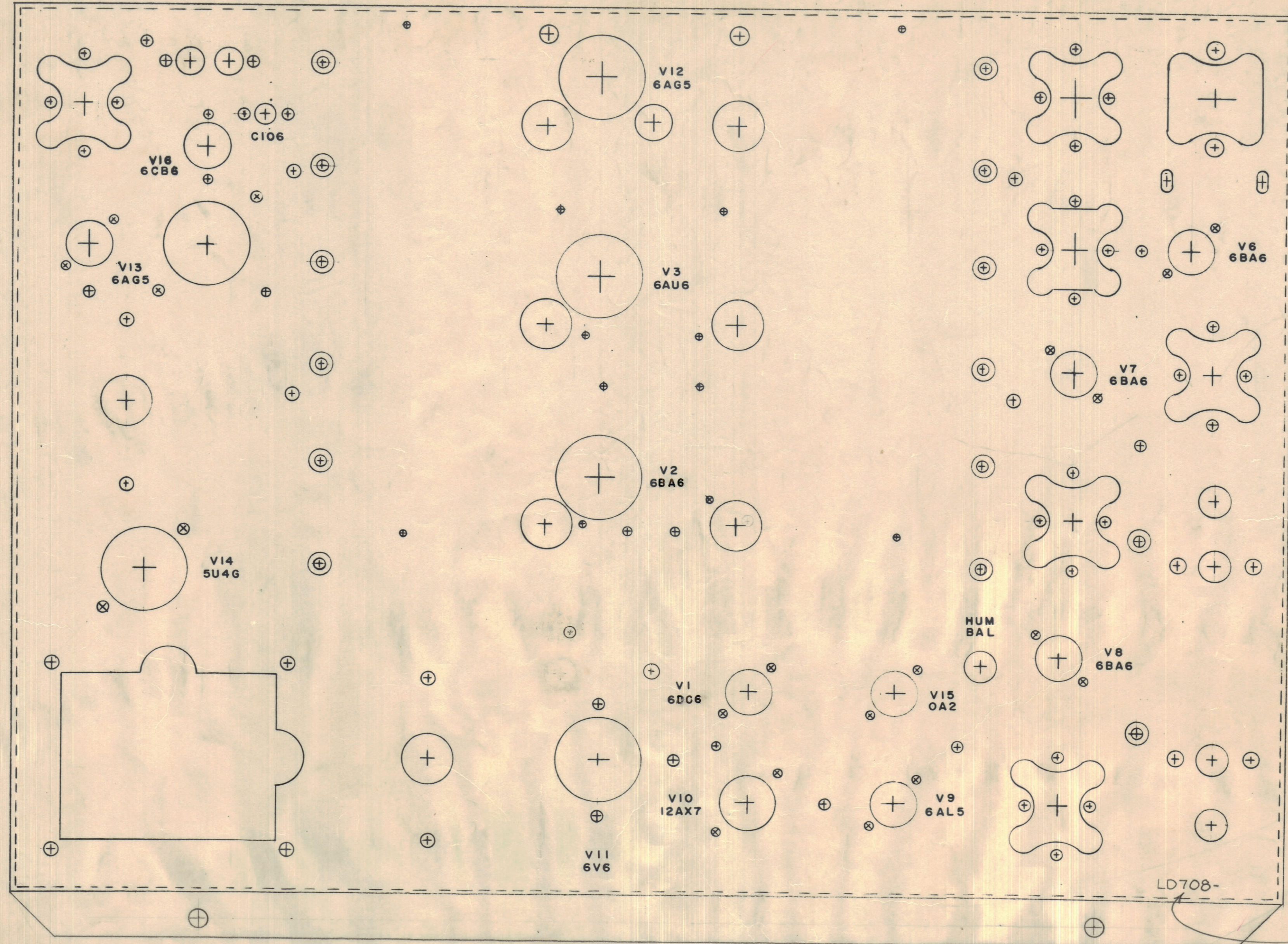


IF IT IS FOUND DESIRABLE TO CHANGE ANY TOLERANCE OR OTHER DETAIL SPECIFIED ON THIS DRAWING NOTIFY THE PURCHASER PROMPTLY.
 MAXIMUM ALLOWABLE TOLERANCES HAVE BEEN DETERMINED AND DEVIATIONS WILL BE CAUSE FOR REJECTION. REMOVE ALL BURRS AND SHARP EDGES

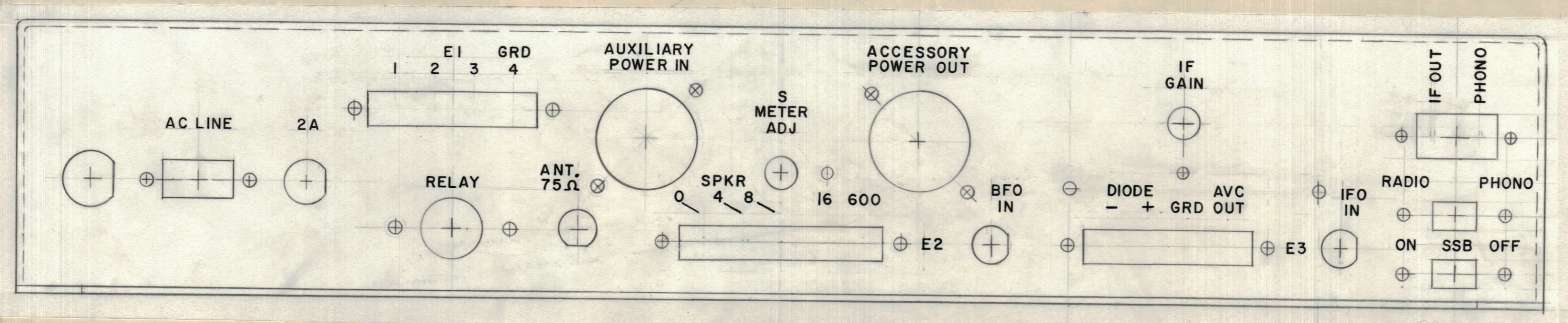
NOTICE TO PERSONS RECEIVING THIS DRAWING
 THE TECHNICAL MATERIEL CORPORATION claims proprietary right in the material disclosed hereon. This drawing is issued in confidence for engineering information only and may not be reproduced or used to manufacture any thing shown hereon without permission from THE TECHNICAL MATERIEL CORPORATION to the user. This drawing is loaned for mutual assistance and is subject to recall at any time.
 Property of:
 THE TECHNICAL MATERIEL CORPORATION
 MAMARONECK, NEW YORK



FRONT
 TOP OF CHASSIS
 REAR

LETTERING TO BE 1/8" HIGH GOTHIC, BLACK
 LOCATED AS SHOWN
 MARKING PROCESS: AS PER T.M.C. SPECIFICATION S-727

MARK T.M.C. PART NO.
 1/8" HIGH GOTHIC
 WITH LATEST REVISION
 LETTER.



TOP
 REAR OF CHASSIS
 BOTTOM

E	REAR VIEW REVISION REV. 5-12-44 16239	WLD	RU
D	ON E1, GRD RELOCATED; ON E2, E3, #E2 RELOCATED; BFO IFO RELOCATED	12-4-42	7900
C	E2 RELOCATED	5-14-62	6701
B	SEE SHEET 2	7-20-61	5303
A	SYMBOLS #E2, #E3, #E4 ADDED		
	E1 WAS ANTENNA 75Ω & 50Ω		
	50Ω ADD IF GAIN		
	START ADD S-METER ADJ		
	DELETE S-METER ADJ		
	6DC6 WAS 6AB4		
	6BA6 WAS 6DC6		

REF: MS-2054

REQ. ITEM	PART NO.	DESCRIPTION	SYMBOL
THE TECHNICAL MATERIEL CORP. MAMARONECK, NEW YORK			
STOCK SIZE			
CHASSIS LETTERING MODEL GPR			
TOP AND REAR OUTSIDE			
TYPE & TEMPER		DRAWN	ELEC. DES. APP. MECH. DES. APP.
HEAT TREAT. SPEC.		CHECKED	FINAL APPROVAL
FINISH & SPEC. NO.		SHEET 2 of 2 LD-708 E	

LD-708 E

