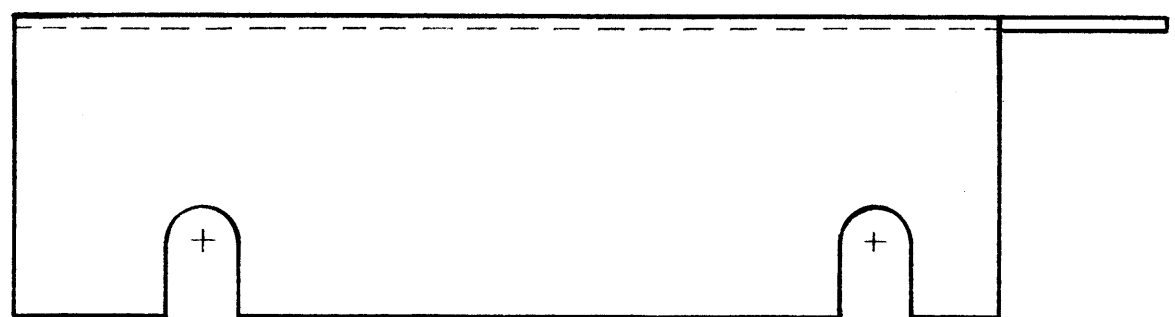
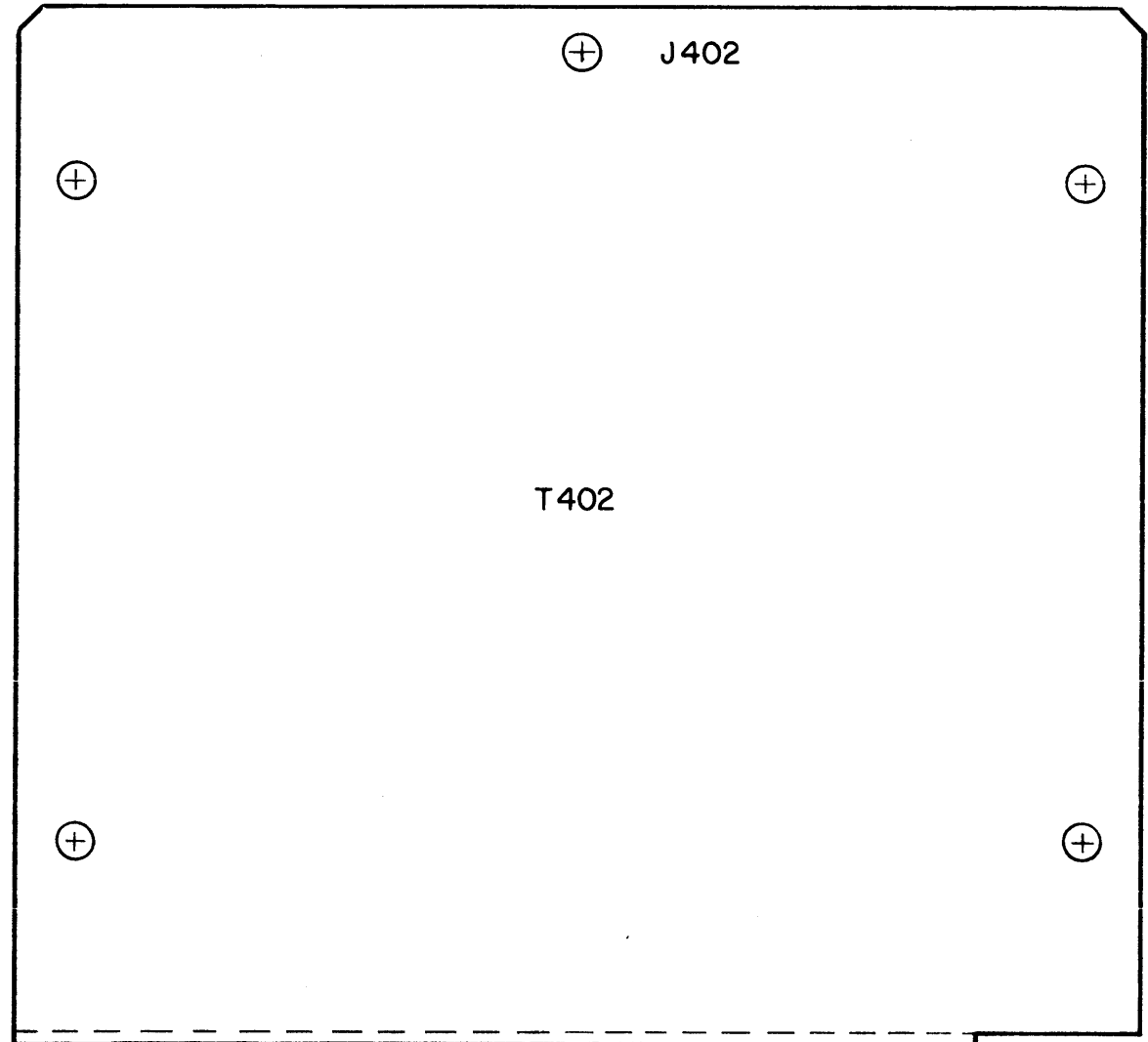


LD-603 A



NOTICE TO PERSONS RECEIVING THIS DRAWING

THE TECHNICAL MATERIEL CORPORATION claims proprietary right in the material disclosed hereon. This drawing is issued in confidence for engineering information only and may not be reproduced or used to manufacture anything shown hereon without permission from THE TECHNICAL MATERIEL CORPORATION to the user. This drawing is loaned for mutual assistance and is subject to recall at any time.

Property of:
THE TECHNICAL MATERIEL CORPORATION
 MAMARONECK, NEW YORK

NOTE ~ ALL LETTERING 1/8 HIGH BLACK GOTHIC.

OBSOLETE: NO LONGER USED
 1-31-61
 W.A.F.

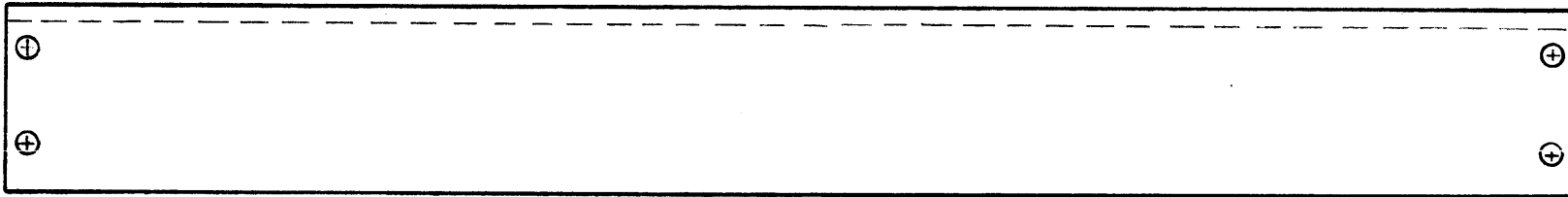
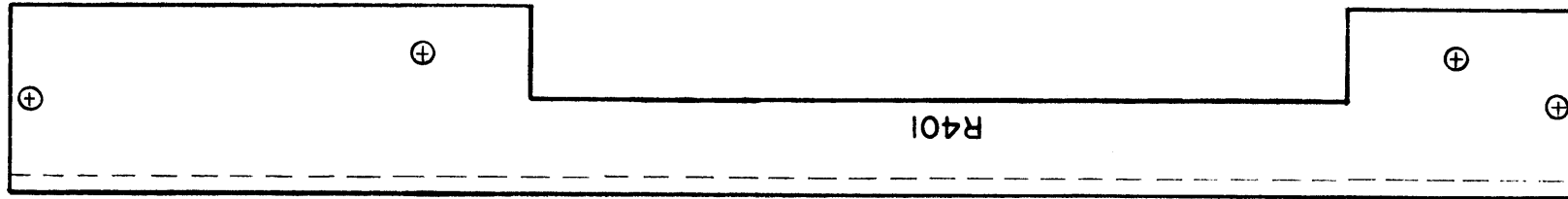
REF ~ TMC DWG NO. ~ MS-1780

DEC. DIM. ±	FRAC. DIM. ±	AN ULAR DIM. ±	MAXIMUM ALLOWABLE TOLERANCES HAVE BEEN DETERMINED AND ANY DEVIATIONS WILL BE CAUSE FOR REJECTION. REMOVE ALL BURRS AND SHARP EDGES				
TOLERANCES			SCALE: FULL (Do not scale)				
ISSUE	ITEM	CHAN ED FROM	DATE	CH. NO.	DRAFTS	CHECKER	ENG. APP.
A	1	DWG MADE OBSOLETE	1-31-61	4037	MAF	OCB	RT

1	PS-5	PAL-1K	7-2-59
REQ. PER UNIT	MODEL	PROJECT NO.	DATE
USED ON			

REQ.	ITEM	PART NO.	DESCRIPTION	YMBOL
			THE TECHNICAL MATERIEL CORP. MAMARONECK, NEW YORK	
STOCK SIZE			LETTERING, COVER	
MATERIAL			CABLE JUNCTION CHASSIS	
TYPE & TEMPER		HEATTREAT. SPEC.	DRAWN	CHECKED
			J.C. Biele	OCB
FINISH & SPEC. NO.		ELEC. DES. APP.	MECH. DES. APP.	
				LD-603 A

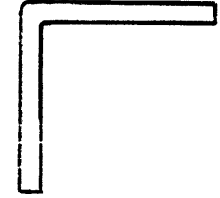
LD-608



NOTICE TO PERSONS RECEIVING THIS DRAWING

THE TECHNICAL MATERIEL CORPORATION claims proprietary right in the material disclosed hereon. This drawing is issued in confidence for engineering information only and may not be reproduced or used to manufacture anything shown hereon without permission from THE TECHNICAL MATERIEL CORPORATION to the user. This drawing is loaned for mutual assistance and is subject to recall at any time.

Property of:
THE TECHNICAL MATERIEL CORPORATION
 MAMARONECK, NEW YORK



NOTE ~ ALL LETTERING 1/8 HIGH BLACK GOTHIC

REF ~ TMC DWG NO. ~ MS-1778

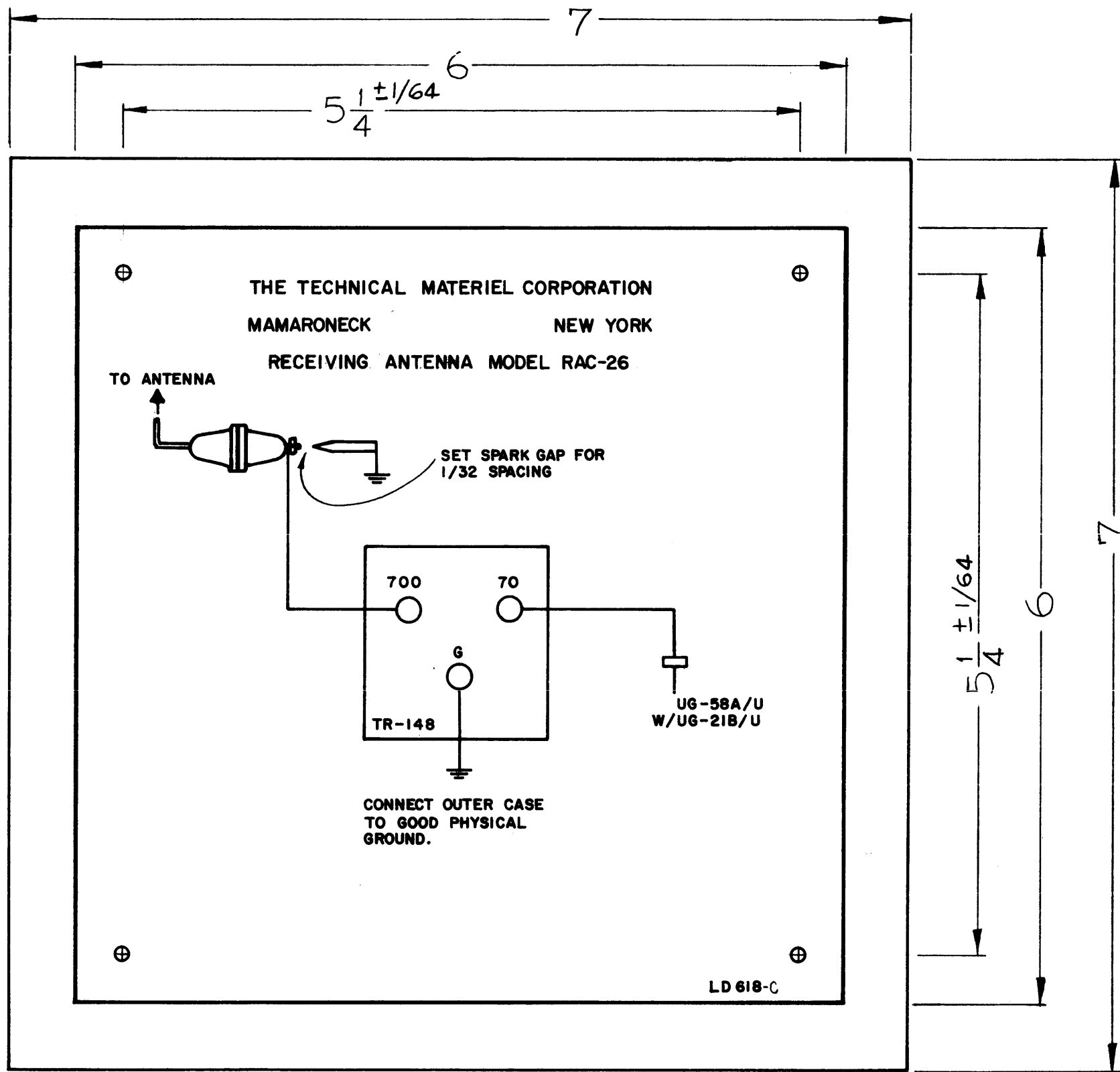
IS USE ITEM	CHAN ED FR M	DATE	CH. NO.	DRAFTS	CHECKER	ENG. APP.
TOLERANCES		SCALE: Full (Do not scale)				
DEC. DIM. ±		MAXIMUM ALLOWABLE TOLERANCES HAVE BEEN DETERMINED AND ANY DEVIATION WILL BE CAUSE FOR REJECTION: REMOVE ALL BURR AND SHARP EDGES				
FRAC. DIM. ±						
ANGULAR DIM. ±						

REQ. PER UNIT	MODEL	PROJECT NO.	ASSY. NO.	DATE
1	PS-5	PAL-1K		7-6-59
USED ON				

REQ. ITEM	PART NO.	DESCRIPTION	SYMBOL
		THE TECHNICAL MATERIEL CORP.	
		MAMARONECK, NEW YORK	
STOCK SIZE		LETTERING,	
		SUPPORT, REAR	
MATERIAL		J.C. Biele	
TYPE & TEMPER	HEATTREAT. SPEC.	DRAWN	CHECKED
FINISH & SPEC. NO.	ELEC. DES. APP.	MECH. DES. APP.	LD-608

LD-618 C

NOTICE TO PERSONS RECEIVING THIS DRAWING
 THE TECHNICAL MATERIEL CORPORATION claims
 proprietary right in the material disclosed hereon.
 This drawing is issued in confidence for engineering
 information only and may not be reproduced or used
 to manufacture anything shown hereon without per-
 mission from THE TECHNICAL MATERIEL CORPORA-
 TION to the user. This drawing is loaned for mutual
 assistance and is subject to recall at any time.
 Property of:
 THE TECHNICAL MATERIEL CORPORATION
 MAMARONECK, NEW YORK



NOTE: ~ ALL HOLES 7/64 (.109) DIA.

NOTE: 1- PRINTED DIRECTLY ON FACE OF PLASTIC.
 2- MATERIAL: POLISHED WHITE OPAQUE VINYL PLASTIC

ISSUE	ITEM	CHAN ED FROM	DATE	CH. NO.	DRAFTS	CHECKER	ENG. APP.
C	2	FINISH DELETED	2-1-63	8168			
	1	MATERIAL CLARIFIED					
B	2	FINISH & NOTE ADDED	7-18-62	6925			
	1	MATL WAS VINYL PLASTIC					
A	1	±1/64 Added to 5/16	4-10-61	4076			

TOLERANCES	SCALE:
DEC. DIM. ± FRAC. DIM. ± ANGULAR DIM. ±	MAXIMUM ALL WABLE TOLERANCE HAVE BEEN DETERMINED AND ANY DEVIATIONS WILL BE CAUSE FOR REJECTION: REMOVED ALL BURRS AND SHARP EDGES

REQ. PER UNIT	MODEL	PROJECT NO.	ASSY. NO.	DATE
1	RAC-26			9-14-59
USED ON				

REQ. ITEM	PART NO.	DESCRIPTION	SYMBOL
	.015	THE TECHNICAL MATERIEL CORP. MAMARONECK, NEW YORK	
	SEE NOTE #2	SCHMATIC, DIAGRAM	
		RAC-26	
		J.C. Biele	
		DRAWN	CHECKED
		FINAL APPROVAL	
		LD-618 C	
		ELEC. DES. APP.	MECH. DE . APP.

LD 623

1

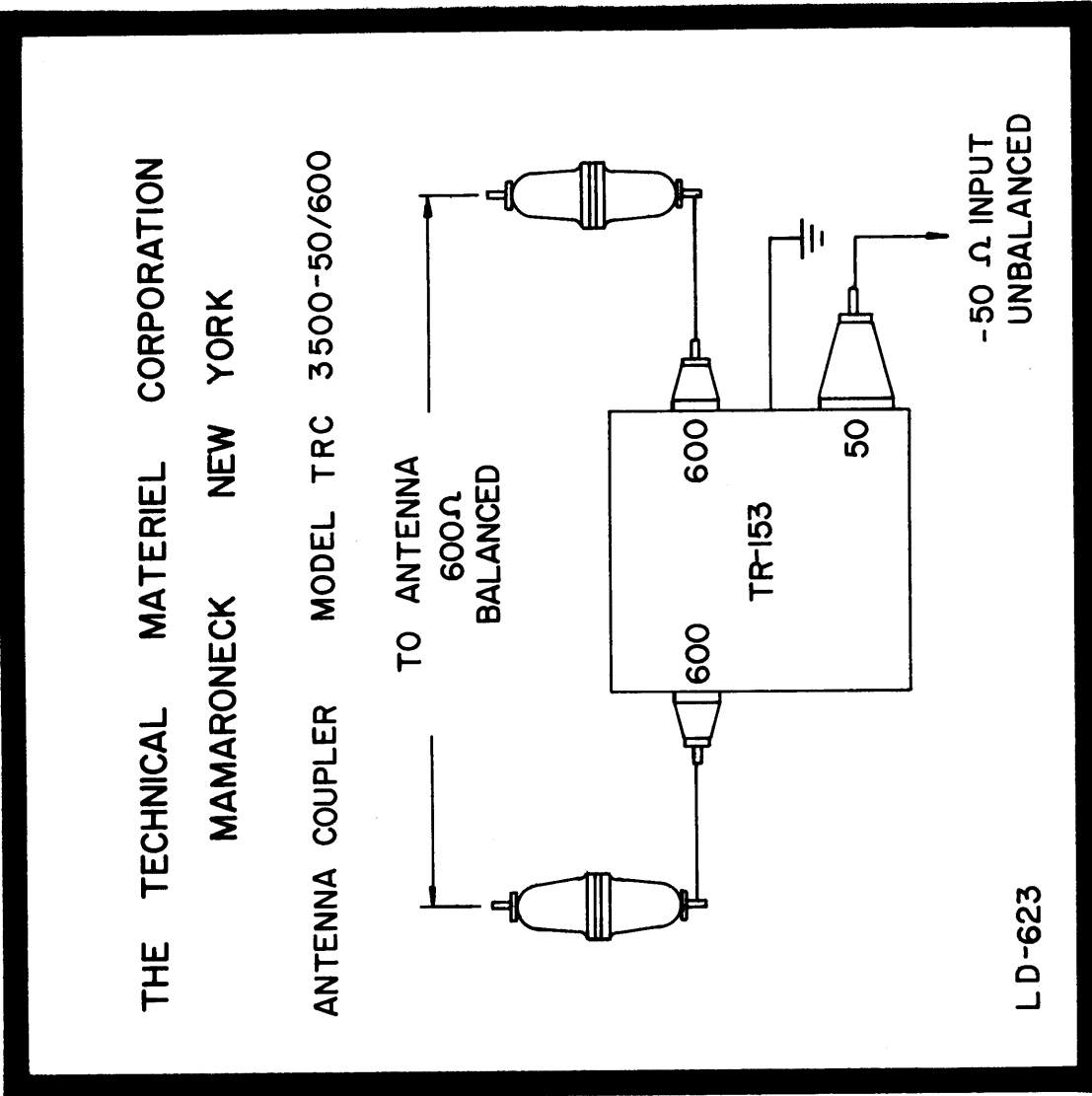
2

3

4

5

REVISIONS				
ZONE	LTR	DESCRIPTION	DATE	E.M.N.NO
	E	REDRAWN	7-1-70	19953



THE TECHNICAL MATERIEL CORPORATION
MAMARONECK NEW YORK

ANTENNA COUPLER MODEL TRC 3500-50/600

LD-623

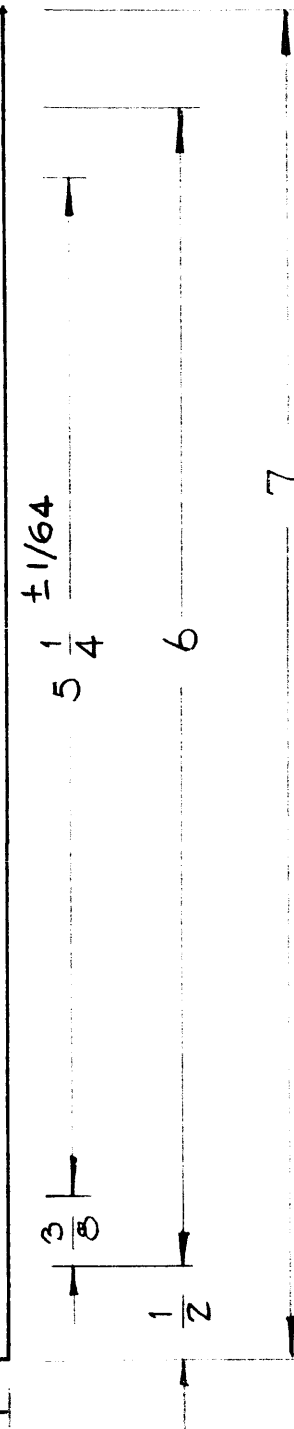
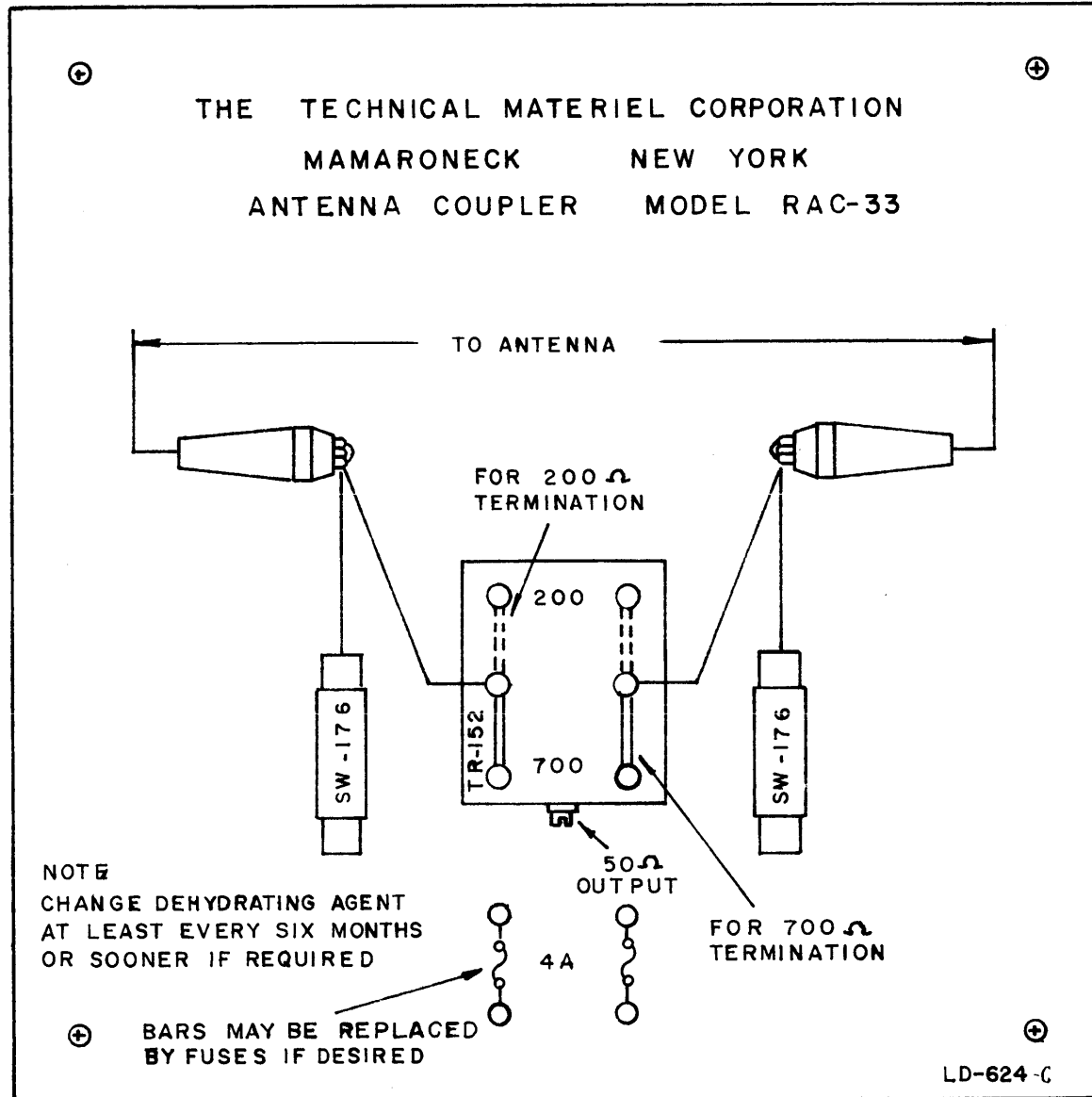
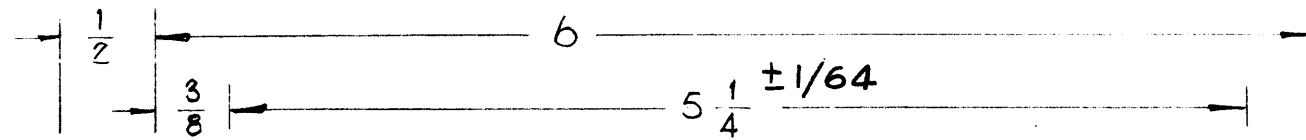
- NOTE:
1. ALL LETTERING AND ARTWORK TO BE BLACK ON ALUMINUM BACKGROUND, WITH ADHESIVE BACKING
 2. REPRODUCTION METHOD: AS PER TMC SPEC S1222.

REQ'D ITEM	PART NUMBER	DESCRIPTION	SYM.
LIST OF MATERIAL			
THE TECHNICAL MATERIEL CORP. MAMARONECK, NEW YORK			
DIAGRAM SCHEMATIC			
TRC 3500/50			
SIZE	CODE IDENT. NO.	DWG NO.	ISSUE
B	82679	LD 623	E
SCALE	SHEET		OF
	1		1

UNLESS OTHERWISE SPECIFIED DIMENSIONS ARE IN INCHES AND INCLUDE CHEMICALLY APPLIED OR PLATED FINISHES	DATE
DECIMALS	DATE
.X ± .05	DATE
.XX ± .01	DATE
.XXX ± .005	DATE
FRACTIONS	DATE
1/64	DATE
ANGLES	DATE
0°-30'	DATE
MATERIAL	DATE
SEE NOTE	DATE
FINISH	DATE
SEE NOTE	DATE

QTY / UNIT	MODEL USED ON	ASS'Y NO.
1	TRC 3500/50	
APPLICATION		
CODE		
<p>NOTICE TO PERSONS RECEIVING THIS DRAWING</p> <p>THE TECHNICAL MATERIEL CORPORATION claims proprietary right in the material disclosed hereon. This drawing is issued in confidence for engineering information only and may not be reproduced or used to manufacture anything shown hereon without permission from THE TECHNICAL MATERIEL CORPORATION to the user. This drawing is loaned for mutual assistance and is subject to recall at any time.</p>		

LD-624 C



NOTE:
4 Holes Req'd.
7/64 (.109) Dia.

NOTE:
1- PRINTED DIRECTLY ON FACE OF PLASTIC.
2- MATERIAL:
POLISHED WHITE OPAQUE VINYL PLASTIC

NOTICE TO PERSONS RECEIVING THIS DRAWING

THE TECHNICAL MATERIEL CORPORATION claims proprietary right in the material disclosed hereon. This drawing is issued in confidence for engineering information only and may not be reproduced or used to manufacture anything shown hereon without permission from THE TECHNICAL MATERIEL CORPORATION to the user. This drawing is loaned for mutual assistance and is subject to recall at any time.

Property of:

THE TECHNICAL MATERIEL CORPORATION
MAMARONECK, NEW YORK

ISSUE	ITEM	CHANGED FROM	DATE	CH. NO.	DRAFTS	CHECKER	ENG. APP.
C	2	FINISH DELETED	2-1-63	8168		Jule	
	1	MATERIAL CLARIFIED					
B	2	FINISH & NOTE ADDED	7-18-62	6925		J.P.S.	
	1	MATL WAS VINYL PLASTIC					
A	1	±1/64 Added to 5/4	2-10-61	4076		ED	

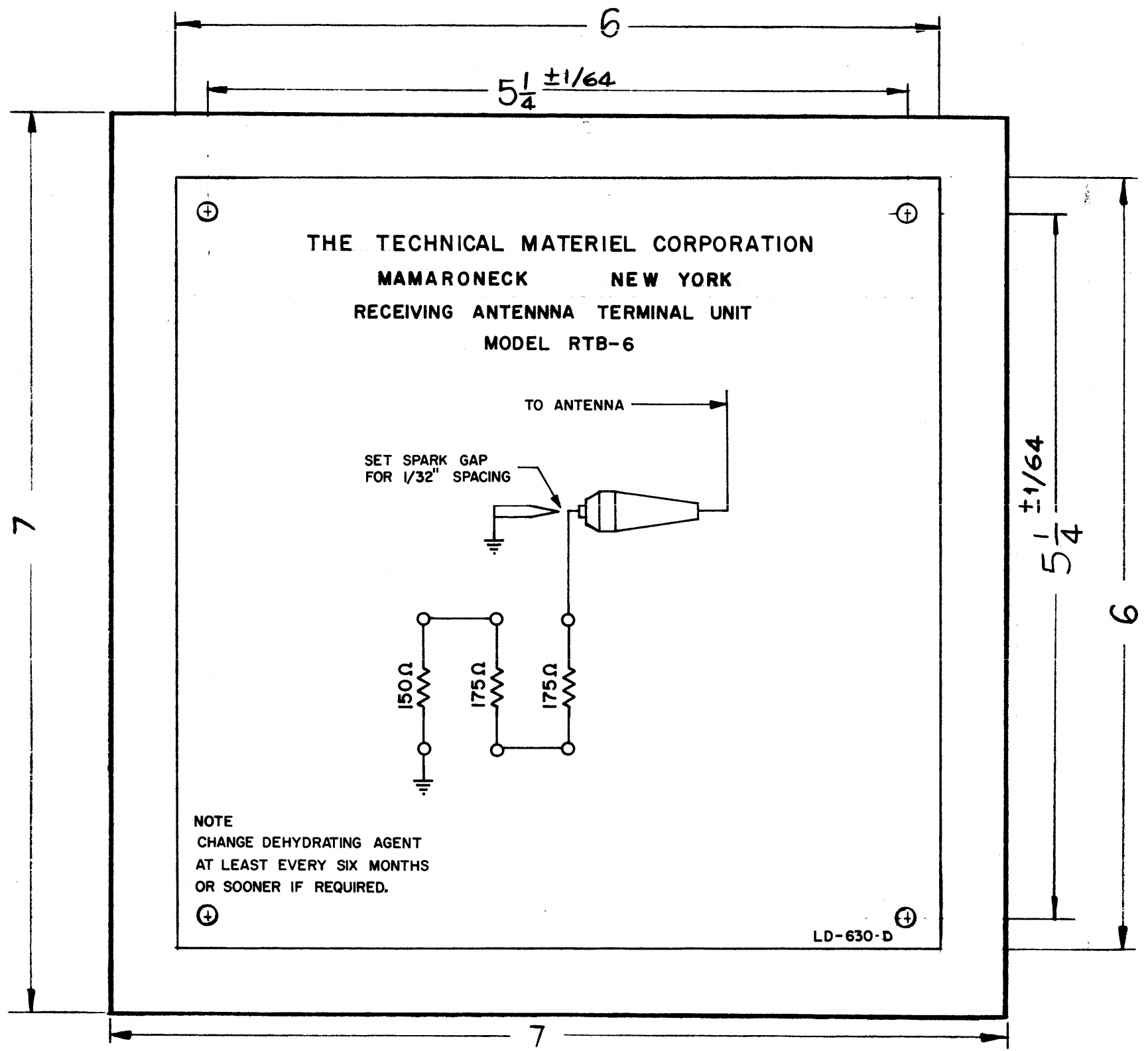
TOLERANCES: DEC. DIM. ±, FRAC. DIM. ±, ANGULAR DIM. ±
 SCALE: MAXIMUM ALLOWABLE TOLERANCES HAVE BEEN DETERMINED AND ANY DEVIATIONS WILL BE CAUSE FOR REJECTION. REMOVE ALL BURRS AND SHARP EDGES

1	RAC-33			10-7-59
REQ. PER UNIT	MODEL	PROJECT NO.	ASS'Y. NO.	DATE

USED ON

REQ. ITEM	PART NO.	DESCRIPTION	SYMBOL
	.015	THE TECHNICAL MATERIEL CORP. MAMARONECK, NEW YORK	
	SEE NOTE # 2	SCHMATIC DIAGRAM	
	MATERIAL	MODEL RAC-33	
		D. Mancuso	
		Jule	
		Chp	
		DRAWN	CHECKED
			FINAL APPROVAL
			LD-624
			C

LD-630 D



NOTE
CHANGE DEHYDRATING AGENT
AT LEAST EVERY SIX MONTHS
OR SOONER IF REQUIRED.

HOLE S
1/8 DIA. 4 REQ'D.

NOTE:
1- PRINTED DIRECTLY ON FACE OF
PLASTIC.
2- MATERIAL:
POLISHED WHITE OPAQUE VINYL
PLASTIC.

NOTICE TO PERSONS RECEIVING THIS DRAWING
THE TECHNICAL MATERIEL CORPORATION claims
proprietary right in the material disclosed hereon.
This drawing is issued in confidence for engineering
information only and may not be reproduced or used
to manufacture anything shown hereon without per-
mission from THE TECHNICAL MATERIEL CORPORA-
TION to the user. This drawing is loaned for mutual
assistance and is subject to recall at any time.

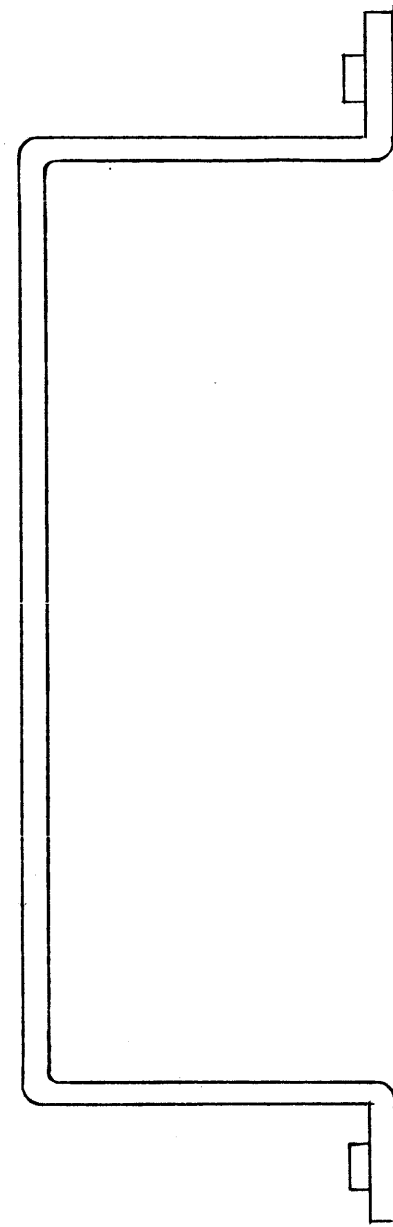
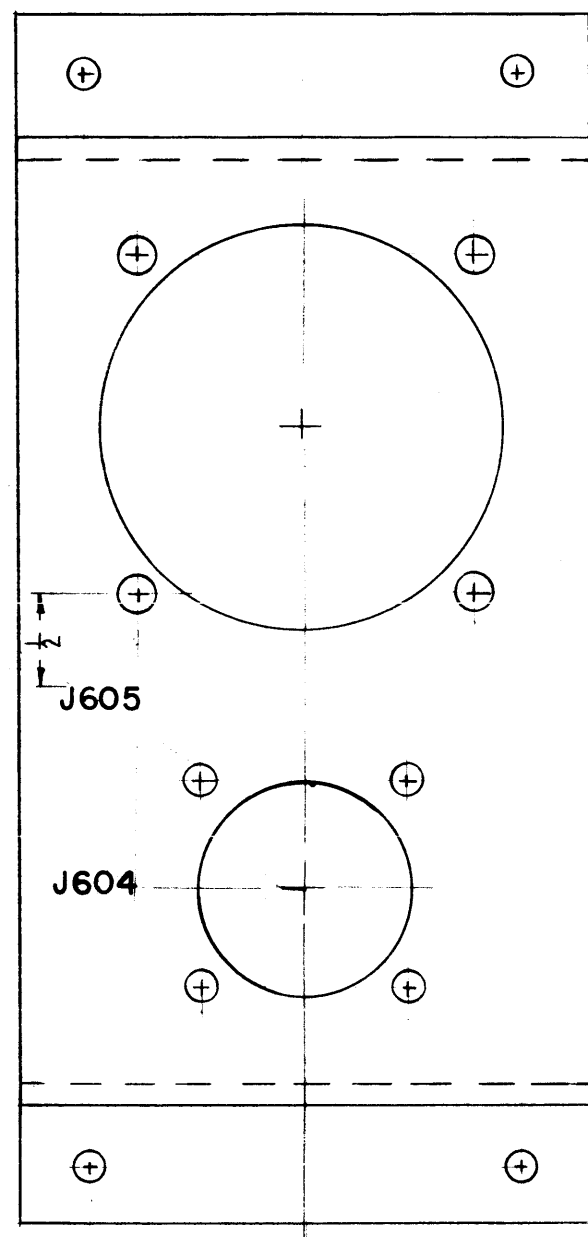
Property of:
THE TECHNICAL MATERIEL CORPORATION
MAMARONECK, NEW YORK

DEC. DIM. ±	MAXIMUM ALLOWABLE TOLERANCES HAVE BEEN DETERMINED AND ANY DEVIATIONS WILL BE CAUSE FOR REJECTION. REMOVE ALL BURRS AND SHARP EDGES
FRAC. DIM. ±	
ANGULAR DIM. ±	

REQ. PER UNIT	RTB-6	E-3070	5-24-63
	MODEL	PROJECT NO.	DATE
USED ON			

REQ. ITEM	PART NO.	DESCRIPTION	SYMBOL
	.015	THE TECHNICAL MATERIEL CORP.	
	STOCK SIZE	MAMARONECK, NEW YORK	
	SEE NOTE #2	SCHEMATIC DIAGRAM	
	MATERIAL	RTB-6	
TYPE & TEMPER	HEAT TREAT. SPEC.	DRAWN	CHECKED
FINISH & SPEC. NO.		ELEC. DES. APP.	MECH. DES. APP.

LD-631 B



ALL LETTERING 1/8" BLACK GOTHIC.

NOTICE TO PERSONS RECEIVING THIS DRAWING

THE TECHNICAL MATERIEL CORPORATION claims proprietary right in the material disclosed hereon. This drawing is issued in confidence for engineering information only and may not be reproduced or used to manufacture anything shown hereon without permission from THE TECHNICAL MATERIEL CORPORATION to the user. This drawing is loaned for mutual assistance and is subject to recall at any time.

Property of:
THE TECHNICAL MATERIEL CORPORATION
 MAMARONECK, NEW YORK

REF: MS-1872

ISSUE	ITEM	CHANGED FROM	DATE	CH. NO.	DRAFTS	CHECKER	ENG. APP.
B	1	SIDE LIPS DELETED	7-12-61	5226	G.D.L	M.H.F.	RK
A	2	J605 WAS J504	12-8-60	3683	RU	JCB	[Signature]
	1	J604 WAS J506					

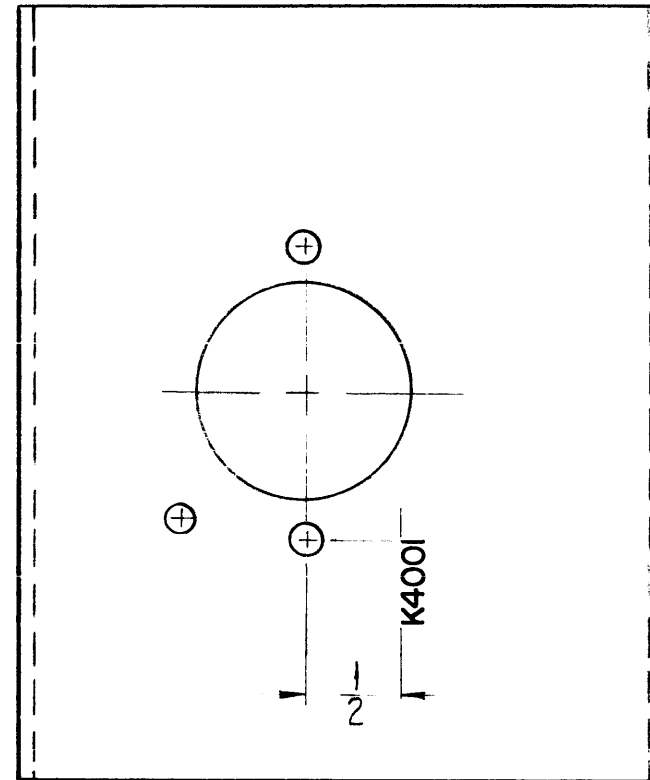
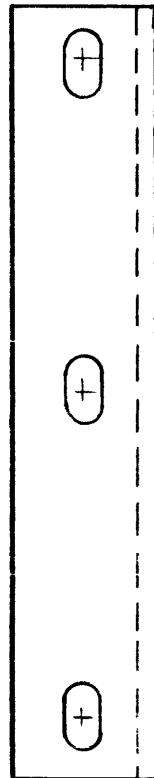
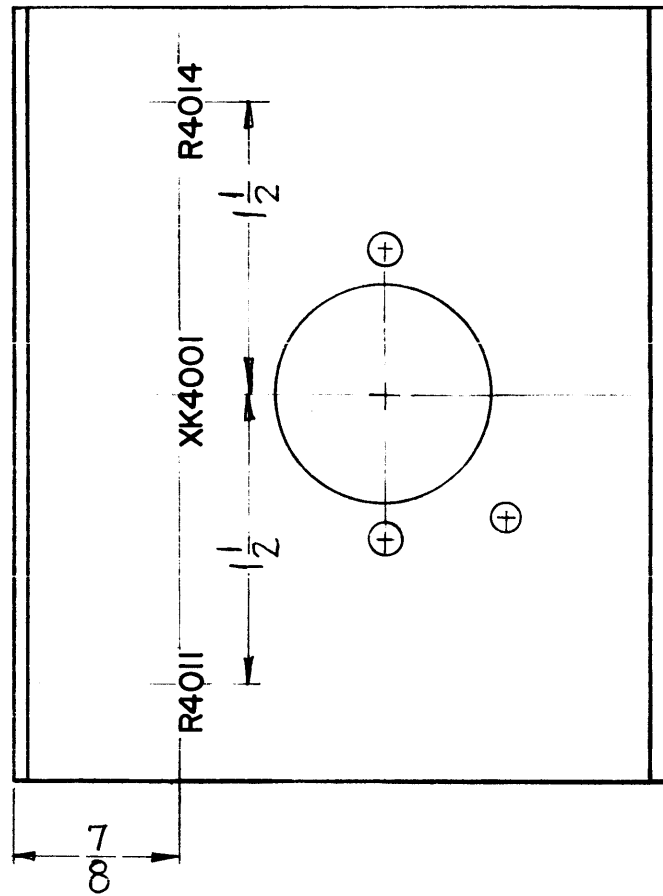
TOLERANCES		SCALE:	
DEC. DIM. ±	MAXIMUM ALLOWABLE TOLERANCES HAVE BEEN DETERMINED AND ANY DEVIATIONS WILL BE CAUSE FOR REJECTION. REMOVE ALL BURRS AND SHARP EDGES		
FRAC. DIM. ±			
ANGULAR DIM. ±			

REQ. PER UNIT	MODEL	PROJECT NO.	ASS'Y. NO.	DATE
1	RAK-9			10-14-59
USED ON				

REQ. ITEM	PART NO.	DESCRIPTION	SYMBOL
X		THE TECHNICAL MATERIEL CORP. MAMARONECK, NEW YORK	
X		LETTERING, RACK CONNECTOR BRACKET	
X		STOCK SIZE	
X		MATERIAL	
X		TYPE & TEMPER	
X		HEAT TREAT. SPEC.	
X		FINISH & SPEC. NO.	
		DRAWN	
		CHECKED	
		FINAL APPROVAL	
		ELEC. DES. APP.	
		MECH. DES. APP.	

LD-631 B

LD-638



NOTICE TO PERSONS RECEIVING THIS DRAWING

THE TECHNICAL MATERIEL CORPORATION retains proprietary right in the material disclosed herein. This drawing is issued in confidence for use as information only and may not be reproduced or used to manufacture anything shown hereon without permission from THE TECHNICAL MATERIEL CORPORATION to the user. This drawing is loaned for technical assistance and is subject to recall at any time.

Property of:

THE TECHNICAL MATERIEL CORPORATION
MAMARONECK, NEW YORK

NOTE ~ ALL LETTERING 1/8 HIGH BLACK GOTHIC.

MARKING PROCESS: AS PER T M C SPECIFICATION S-727

REF. MS-1911(2)

SYM	DESCRIPTION	DATE	CH. NO.	DRAFTS	CHECKER	ENG. APP.
UNLESS OTHERWISE SPECIFIED:		SCALE: <i>1-1</i>				
DIMENSIONS ARE IN INCHES		MAXIMUM ALLOWABLE TOLERANCES HAVE BEEN DETERMINED AND ANY DEVIATIONS WILL BE CAUSE FOR REJECTION.				
TOLERANCES ON FRACTIONS ± 1/64 DECIMALS ± .005 ANGLES ± 1/2°		REMOVE ALL BURRS AND SHARP EDGES				

REQ. PER UNIT	MODEL	SECTION	ASS'Y. NO.	DATE
1	AK-100			6-1-61
1	ISK			6-1-61
USED ON				

REQ.	ITEM	PART NO.	DESCRIPTION		SYMBOL
			THE TECHNICAL MATERIEL CORP. MAMARONECK, NEW YORK		
STOCK SIZE			LETTERING, BRACKET, RELAY		
MATERIAL					
			DRAWN <i>DD Mann</i>	CHECKER <i>JDe</i>	FINAL APPROVAL <i>[Signature]</i>
			TYPE & TEMPER	HEAT TREAT. SPEC.	
			FINISH & SPEC. NO.	ELEC. DES. APP.	MECH. DES. APP.
					LD-638

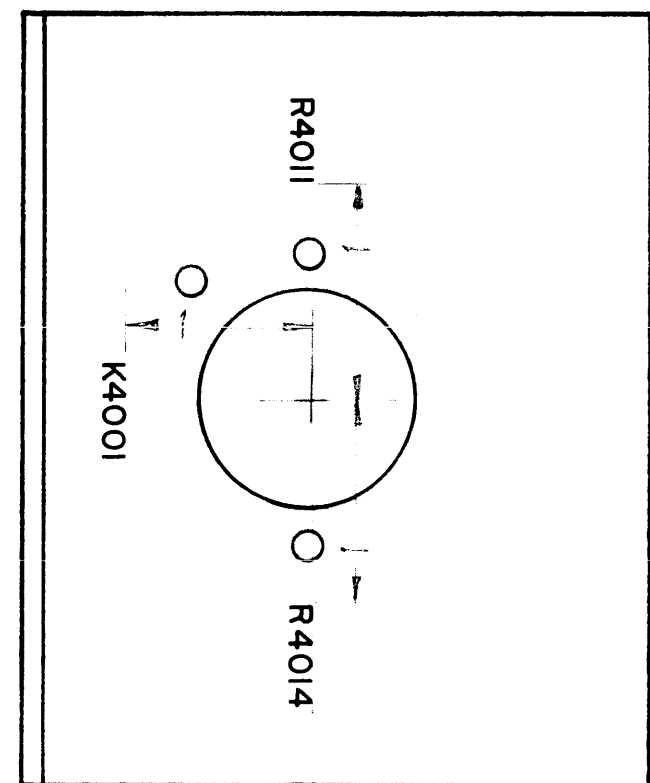
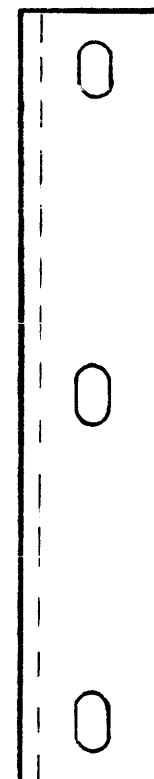
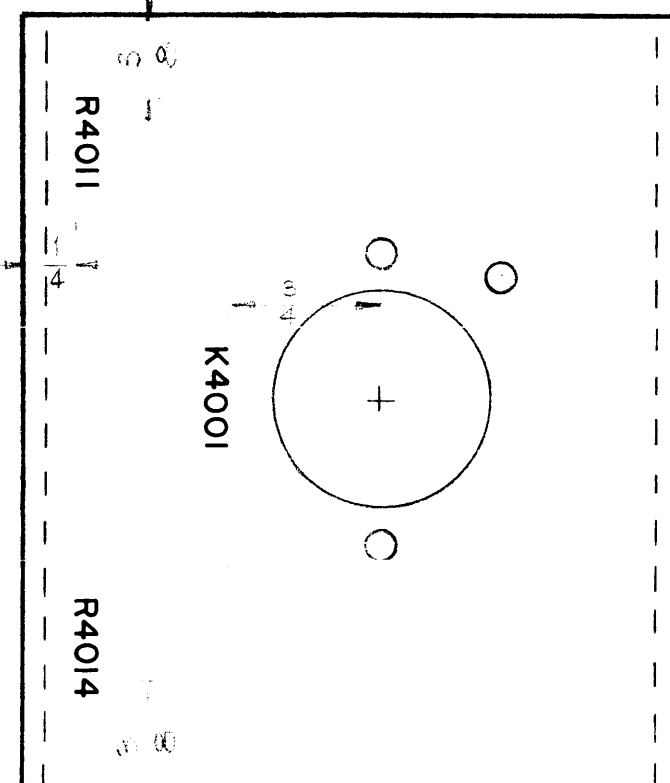
Note —
All stamping 1/8
high Black Gothic.

NOTICE TO PERSONS RECEIVING THIS DRAWING

THE TECHNICAL MATERIEL CORPORATION claims
proprietary right in the material disclosed hereon.
This drawing is issued in confidence for engineering
information only and may not be reproduced or used
to manufacture anything shown hereon without per-
mission from THE TECHNICAL MATERIEL CORPORA-
TION to the user. This drawing is loaned for mutual
assistance and is subject to recall at any time.

Property of:

THE TECHNICAL MATERIEL CORPORATION
MAMARONECK, NEW YORK



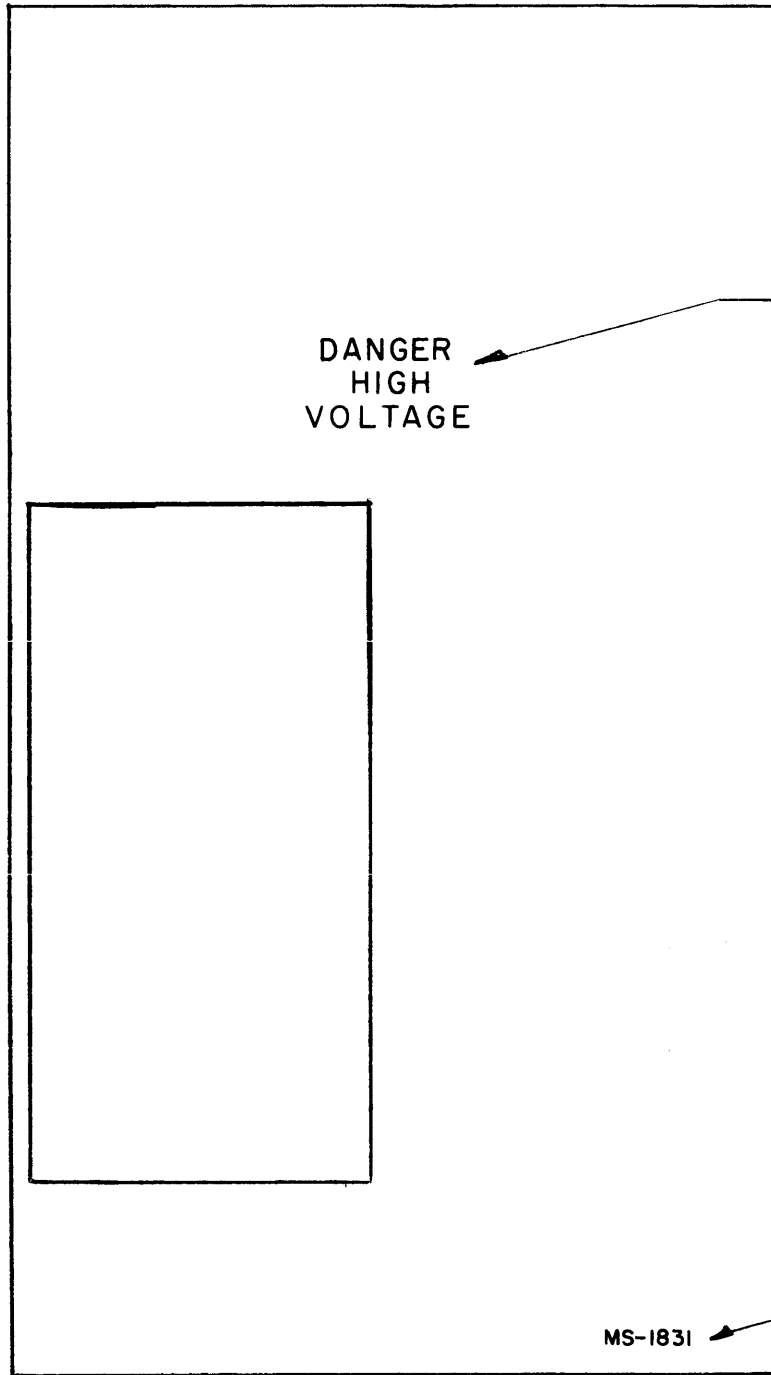
ISSUE	ITEM	CHANGED FROM	DATE	CH. NO.	DRAFTS	CHECKER	ENG. APP.
TOLERANCES			SCALE:				
DEC. DIM. ±			MAXIMUM ALLOWABLE TOLERANCES HAVE				
FRAC. DIM. ±			BEEN DETERMINED AND ANY DEVIATIONS				
ANGULAR DIM. ±			WILL BE CAUSE FOR REJECTION.				
			REMOVE ALL BURRS AND SHARP EDGES				

1	AK-190			11-17-59
REQ. PER UNIT	MODEL	PROJECT NO.	ASS'Y. NO.	DATE
USED ON				

REQ. ITEM	PART NO.	DESCRIPTION	SYMBOL
		THE TECHNICAL MATERIEL CORP. MAMARONECK, NEW YORK	
		BRACKET, RELAY (STAMPING)	
		<div style="display: flex; justify-content: space-between;"> W. M. </div>	
		TYPE & TEMPER	HEAT TREAT. SPEC.
		DRAWN	CHECKED
		FINAL APPROVAL	
		LD-642	
		FINISH & SPEC. NO.	ELEC. DES. APP. MECH. DES. APP.

LD-654

TOP



Stamp in RED
Use Rubber Stamp
No: LD-585

MARKING PROCESS: AS PER T M C SPECIFICATION S-727

NOTICE TO PERSONS RECEIVING THIS DRAWING

THE TECHNICAL MATERIEL CORPORATION claims proprietary right in the material disclosed hereon. This drawing is issued in confidence for engineering information only and may not be reproduced or used to manufacture anything shown hereon without permission from THE TECHNICAL MATERIEL CORPORATION to the user. This drawing is loaned for mutual assistance and is subject to recall at any time.

Property of:
THE TECHNICAL MATERIEL CORPORATION
MAMARONECK, NEW YORK

1/8 high Black Gothic

REF: MS-1831 (8)

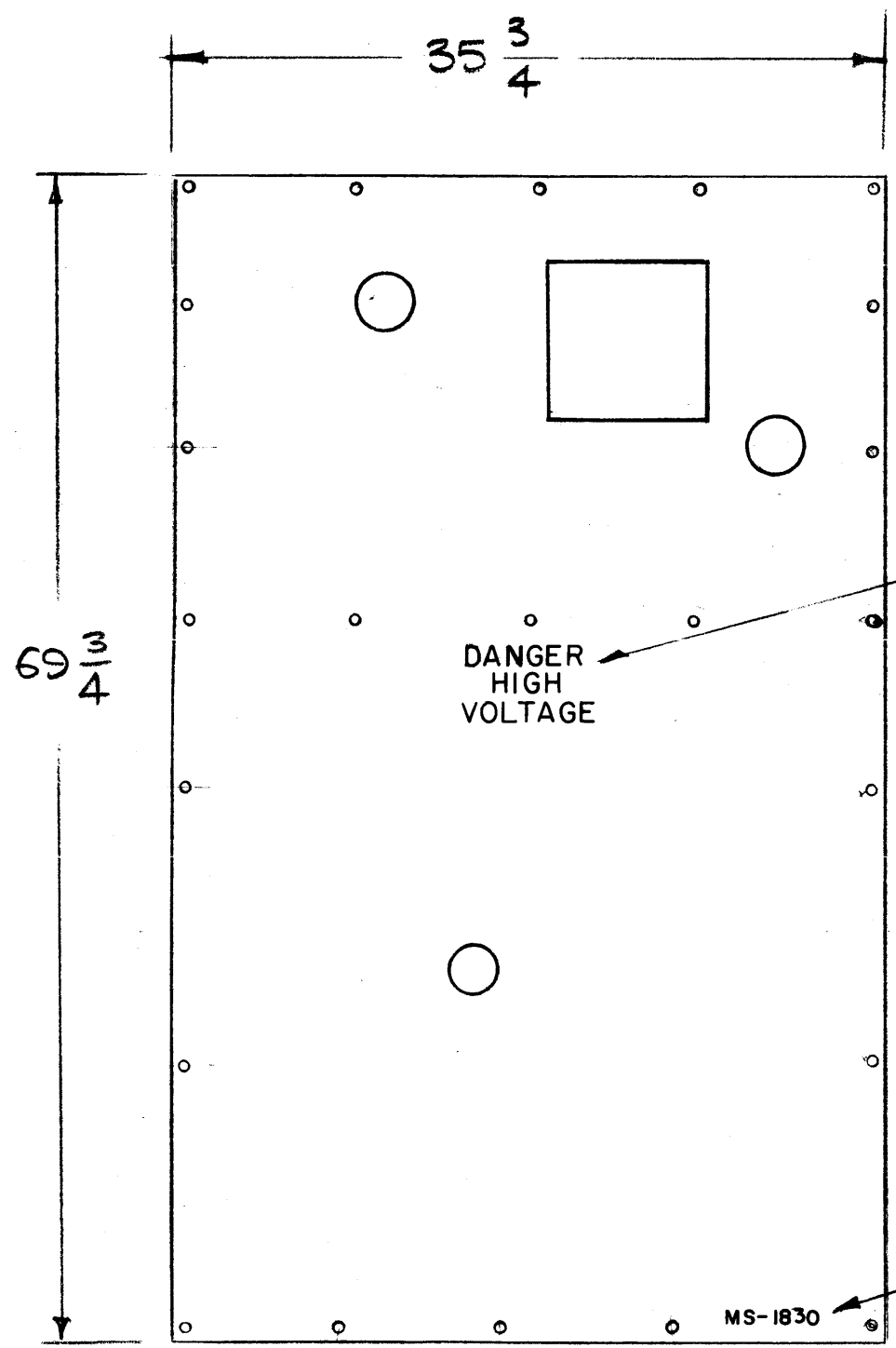
ISSUE	ITEM	CHANGED FROM	DATE	CH. NO.	DRAFTS	CHECKER	ENG. APP.
TOLERANCES			SCALE:				
DEC. DIM. ±			MAXIMUM ALLOWABLE TOLERANCES HAVE BEEN DETERMINED AND ANY DEVIATIONS WILL BE CAUSE FOR REJECTION. REMOVE ALL BURRS AND SHARP EDGES				
FRAC. DIM. ±							
ANGULAR DIM. ±							

1	GPT-10K	Aux. Frame	12-18-59
REQ. PER UNIT	MODEL	PROJECT NO.	ASS'Y. NO.
USED ON			

REQ. ITEM	PART NO.	DESCRIPTION	SYMBOL
		THE TECHNICAL MATERIEL CORP. MAMARONECK, NEW YORK	
STOCK SIZE		LETTERING, SHIELD, LEFT SIDE (Aux Frame)	
MATERIAL			
TYPE & TEMPER		HEAT TREAT. SPEC.	
DRAWN		CHECKED	FINAL APPROVAL
FINISH & SPEC. NO.		ELEC. DES. APP.	MECH. DES. APP.

LD-654

LD-655



Stamp in Red
Use LD-585,
Rubber Stamp

MARKING PROCESS: AS PER TMC SPECIFICATION S-727

NOTICE TO PERSONS RECEIVING THIS DRAWING

THE TECHNICAL MATERIEL CORPORATION claims proprietary right in the material disclosed hereon. This drawing is issued in confidence for engineering information only and may not be reproduced or used to manufacture anything shown hereon without permission from THE TECHNICAL MATERIEL CORPORATION to the user. This drawing is loaned for mutual assistance and is subject to recall at any time.

Property of:
THE TECHNICAL MATERIEL CORPORATION
MAMARONECK, NEW YORK

1/8 high Black Gothic

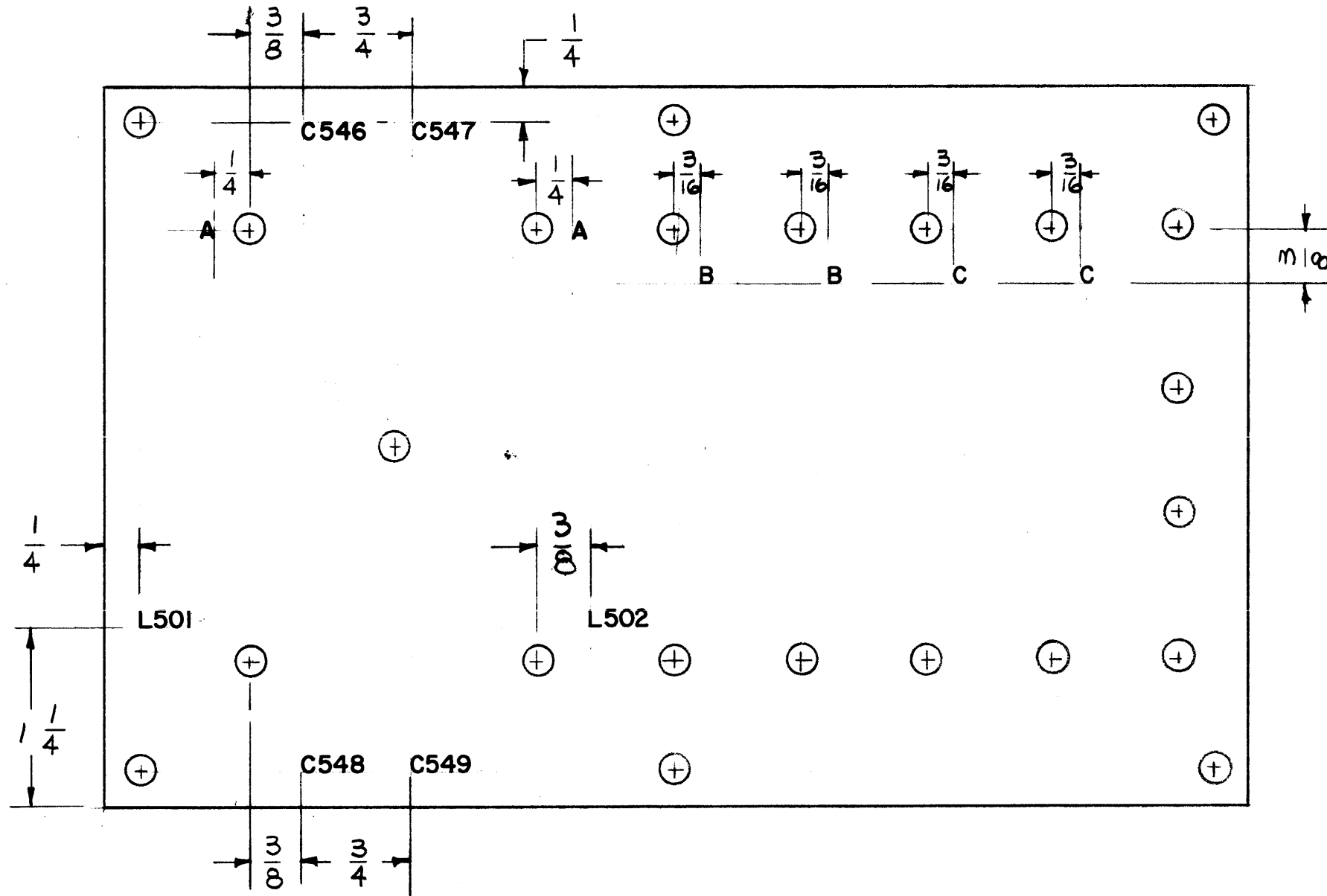
Ref: (8) MS-1830

ISSUE ITEM	CHAN ED FR M	DATE	CH. NO.	DRAFTS	CHECKER	ENG. APP.			
TOLERANCE		SCALE: NONE							
DEC. DIM. ±		MAXIMUM ALLOWABLE TOLERANCES HAVE BEEN DETERMINED AND ANY DEVIATIONS WILL BE CAUSE FOR REJECTION. REMOVE ALL BURRS AND SHARP EDGES							
FRAC. DIM. ±									
ANGULAR DIM. ±									

1	GPT-10K	MAIN FRAME	12-18-59
REQ. PER UNIT	MODEL	PROJECT NO.	ASSY. NO.
USED ON			

REQ. ITEM	PART NO.	DESCRIPTION	SYMBOL
		THE TECHNICAL MATERIEL CORP. MAMARONECK, NEW YORK	
STOCK SIZE		LETTERING, SHIELD, RIGHT	
MATERIAL		SIDE MAIN FRAME	
		DA-Mam 12-18-59 16	
TYPE & TEMPER	HEATTREAT. SPEC.	DRAWN	CHECKED
FINISH & SPEC. NO.	ELEC. DES. APP	MECH. DES. APP	LD-655

LD-658



NOTICE TO PERSONS RECEIVING THIS DRAWING

THE TECHNICAL MATERIEL CORPORATION claims proprietary right in the material disclosed hereon. This drawing is issued in confidence for engineering information only and may not be reproduced or used to manufacture anything shown hereon without permission from THE TECHNICAL MATERIEL CORPORATION to the user. This drawing is loaned for mutual assistance and is subject to recall at any time.

Property of:

THE TECHNICAL MATERIEL CORPORATION
MAMARONECK, NEW YORK

NOTE:

ALL LETTERING TO BE 1/8" BLACK GOTHIC.

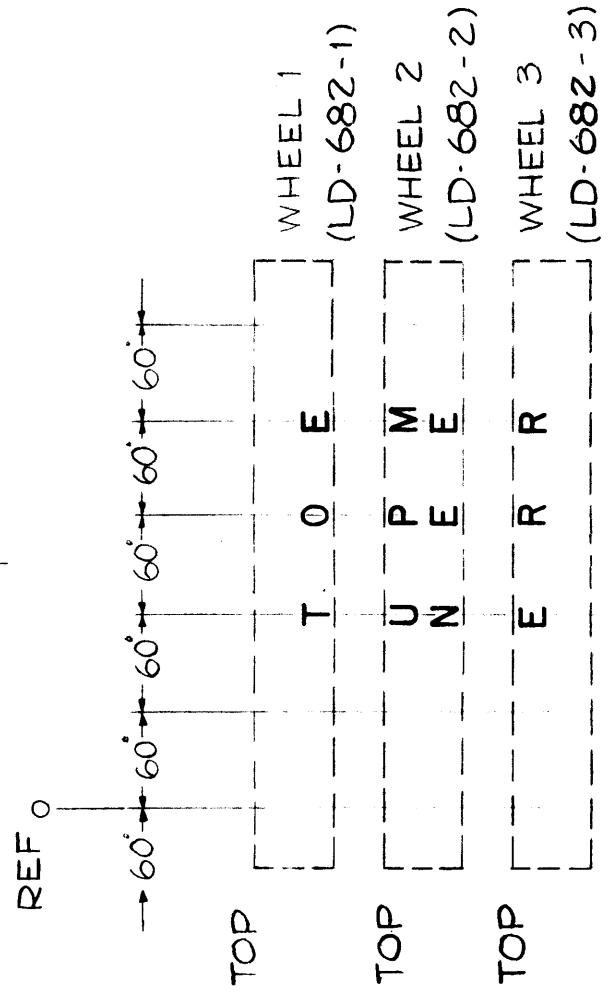
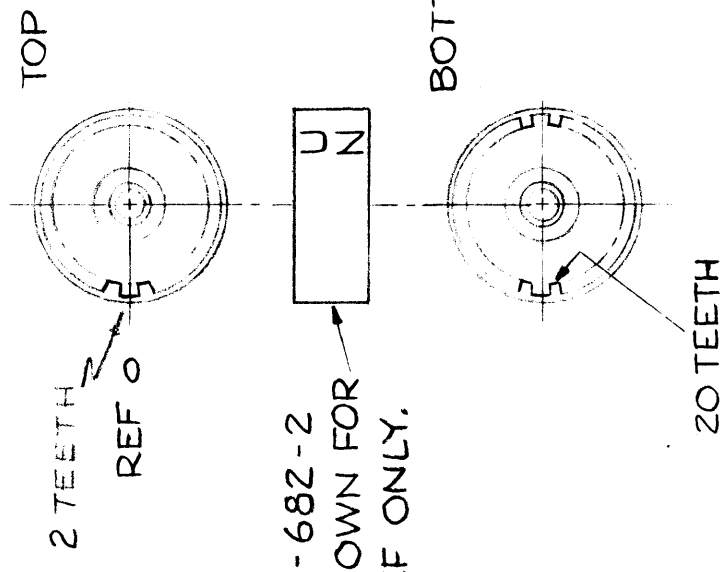
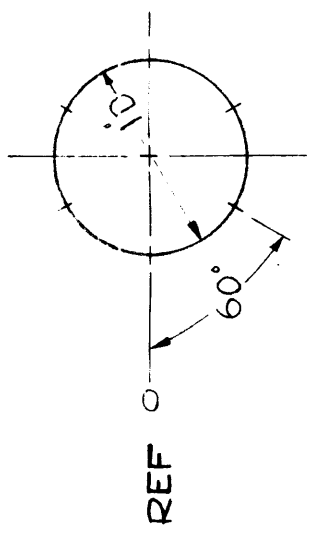
REF: PX-495 (2)

ISSUE	ITEM	CHANGED FROM	DATE	CH. NO.	DRAFTS	CHECKER	ENG. APP.
TOLERANCES			SCALE:				
DEC. DIM. ±			MAXIMUM ALLOWABLE TOLERANCES HAVE BEEN DETERMINED AND ANY DEVIATIONS WILL BE CAUSE FOR REJECTION:				
FRAC. DIM. ±			REMOVE ALL BURRS AND SHARP EDGES				
ANGULAR DIM. ±							

REQ. PER UNIT	MODEL	PROJECT NO.	ASSY. NO.	DATE
1	RAK-9			12-22-59
USED ON				

REQ.	ITEM	PART NO.	DESCRIPTION	SYMBOL
THE TECHNICAL MATERIEL CORP. MAMARONECK, NEW YORK				
STOCK SIZE				
MATERIAL			LETTERING, POWER INPUT TERMINAL BOARD	
TYPE & TEMPER			DRAWN: P.A. CHECKED: [Signature] FINAL APPROVAL: [Signature]	
HEAT TREAT. SPEC.			ELEC. DE. APP. MGR. DES. APP.	
FINISH & SPEC. NO.			LD-658	

LD 682 B



WHEEL LETTERING DETAILS

LD-682-2 SHOWN FOR REF ONLY.

NOTES ~
 LETTERS ~ 14 POINT BLACK GOTHIC.
 BACKGROUND ~ WHITE
 SPACING ~ SINGLE LETTERS CENTERED ON 60° E.

NOTICE TO PERSONS RECEIVING THIS DRAWING
 THE TECHNICAL MATERIEL CORPORATION claims proprietary right in the material disclosed hereon. This drawing is issued in confidence for engineering information only and may not be reproduced or used to manufacture anything shown hereon without permission from THE TECHNICAL MATERIEL CORPORATION to the user. This drawing is loaned for mutual assistance and is subject to recall at any time.

Property of:
 THE TECHNICAL MATERIEL CORPORATION
 MAMARONECK, NEW YORK

FOR TMC USE ~
 USE BLANK WHEELS OF CY106 AFTER
 DISASSEMBLING AS PER STEPS 1 & 2
 OF TMC DWG A 3116-6

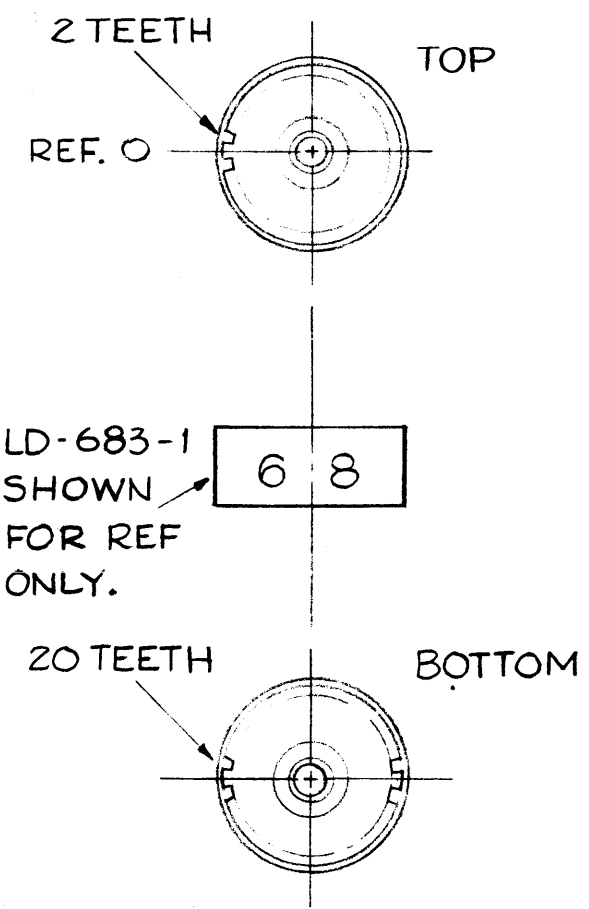
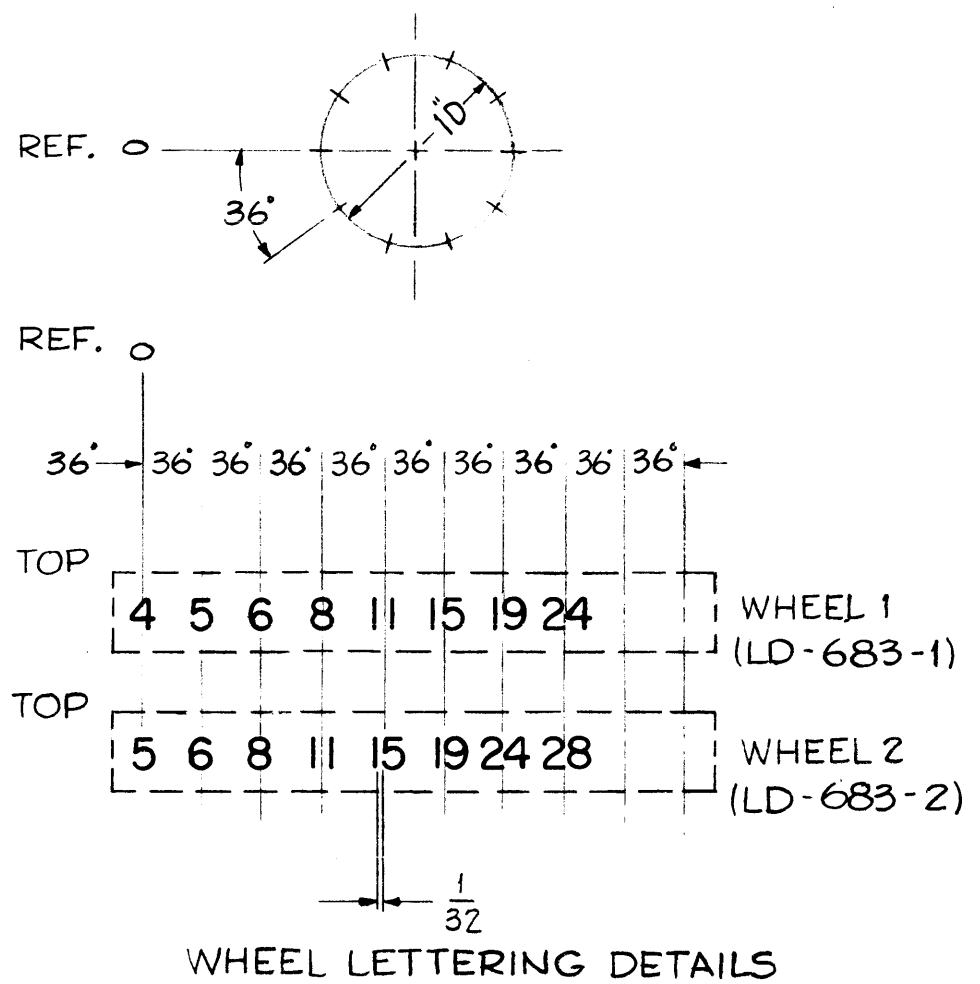
ISSUE ITEM	CHANGED FROM	DATE	CH. NO.	DRAFTS	CHECKER	ENG. APP.
B	DELE. SUPERSEDED NOTE REF. NOTE DWG NO. WAS A1821(4).	1-19-67	17696	RME	<i>[Signature]</i>	
A	SUPERSEDED NOTE ADDED	5-15-63	8971	<i>[Signature]</i>	<i>[Signature]</i>	

TOLERANCES
 DEC. DIM. ±
 FRAC. DIM. ±
 ANGULAR DIM. ±

SCALE:
 MAXIMUM ALLOWABLE TOLERANCES HAVE BEEN DETERMINED AND ANY DEVIATIONS WILL BE CAUSE FOR REJECTION.
 REMOVE ALL BURRS AND SHARP EDGES

REQ. ITEM	PART NO.	DESCRIPTION	SYMBOL
		THE TECHNICAL MATERIEL CORP. MAMARONECK, NEW YORK	
		LETTERING, WHEELS, AC108	
		ASSY	
		J.C. Biele	
		DRAWN	
		CHECKED	
		FINAL APPROVAL	
		LD 682 B	

LD-683 A



NOTES ~

- 1 ~ FIGURES ~ 18 POINT ALTERNATE BLACK GOTHIC NO. 2.
- 2 ~ BACKGROUND ~ WHITE
- 3 ~ SPACING ~ DOUBLE FIGURES 1/32 APART, SINGLE FIGURES CENTERED ON 36° Q.
- 4 ~ USE DWG LD-617 FOR 3RD WHEEL.

"NO LONGER USED"
 REPLACED BY LD-978 ON 2-28 MC 40K XMTRS, BUT MAY BE USED FOR SPARE PARTS ON 4-28MC XMTRS.

NOTICE TO PERSONS RECEIVING THIS DRAWING

THE TECHNICAL MATERIEL CORPORATION claims proprietary right in the material disclosed hereon. This drawing is issued in confidence for engineering information only and may not be reproduced or used to manufacture anything shown hereon without permission from THE TECHNICAL MATERIEL CORPORATION to the user. This drawing is loaned for mutual assistance and is subject to recall at any time.

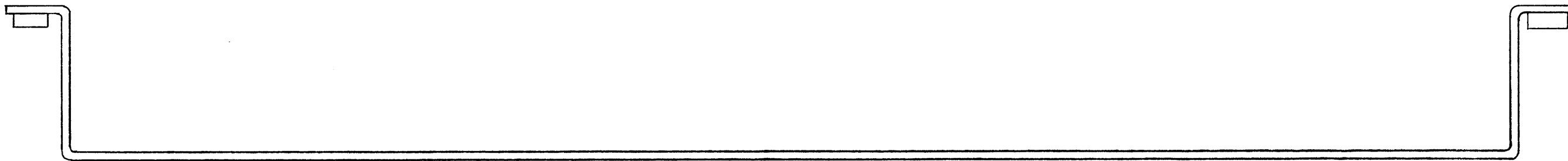
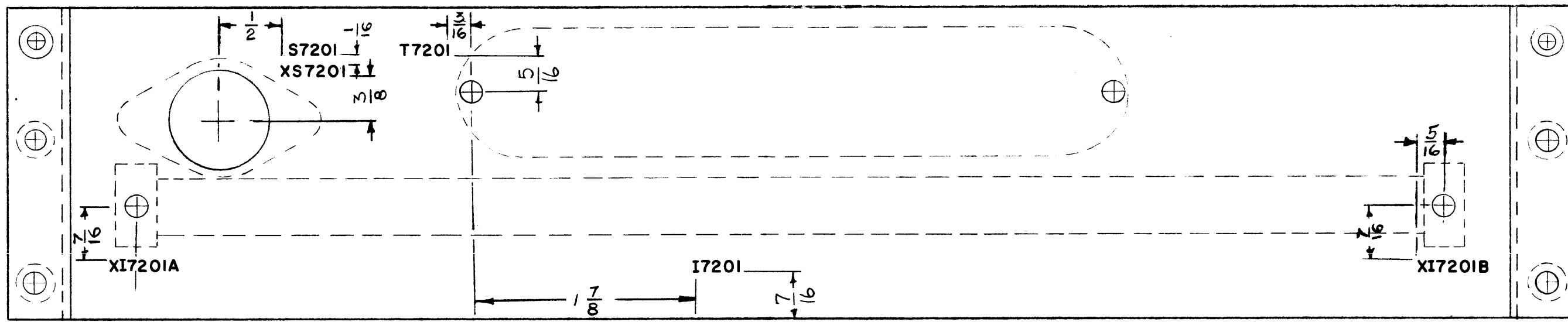
Property of:
 THE TECHNICAL MATERIEL CORPORATION
 MAMARONECK, NEW YORK

FOR TMC USE ~
 USE BLANK WHEEL OF CY 106 AFTER DISASSEMBLING AS PER STEPS 1 & 2 OF TMC DWG A-1820(4)

ISSUE	ITEM	CHANGED FROM	DATE	CH. NO.	DRAFTS	CHECKER	ENG. APP.
A	1	"NO LONGER USED" NOTE ADDED	11/6/61	5848	Jm	Qa	Qa
TOLERANCES			SCALE:				
DEC. DIM. ±			MAXIMUM ALLOWABLE TOLERANCES HAVE BEEN DETERMINED AND ANY DEVIATIONS WILL BE CAUSE FOR REJECTION. REMOVE ALL BURRS AND SHARP EDGES				
FRAC. DIM. ±							
ANGULAR DIM. ±							

1	AX 209	GPT 40K	AC 109,	1 ~ 22 ~ 60
REQ. PER UNIT	MODEL	PROJECT NO.	ASS'Y. NO.	DATE
USED ON				

REQ. ITEM	PART NO.	DESCRIPTION	SYMBOL
		THE TECHNICAL MATERIEL CORP. MAMARONECK, NEW YORK	
STOCK SIZE		LETTERING, WHEELS, AC 109	
MATERIAL		ASS'Y	
		J.C. Biele	JR
TYPE & TEMPER	HEAT TREAT. SPEC.	DRAWN	CHECKED
FINISH & SPEC. NO.		ELEC. DES. APP.	MECH. DES. APP.
		LD-683 A	



MARKING PROCESS : AS PER TMC SPEC. S-727
 ALL LETTERING 1/8 HIGH BLACK GOTHIC.

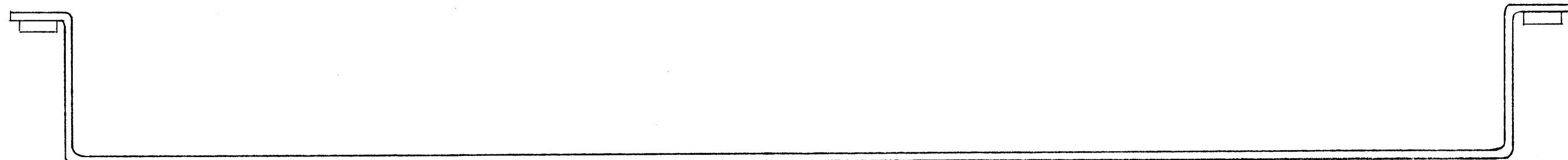
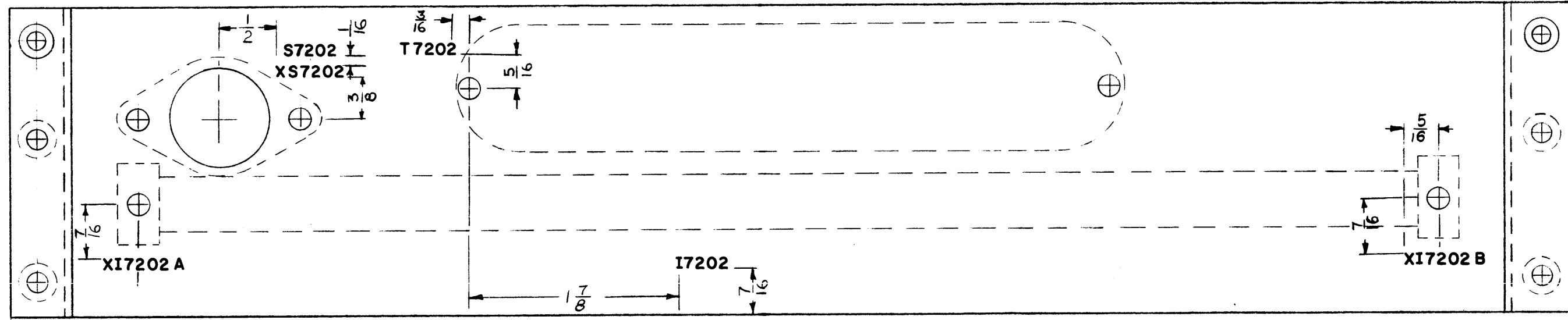
REF-4MS-1553

A	DIM TO ALL LETTERS ADDED		8-3-65	14553	D.V.V.	J.C.B.	
ISSUE	ITEM	CHANGED FROM	DATE	CH. NO.	DRAFTS	CHECKER	ENG. APP.
TOLERANCES			SCALE:				
DEC. DIM. ±			MAXIMUM ALLOWABLE TOLERANCES HAVE BEEN DETERMINED AND ANY DEVIATIONS WILL BE CAUSE FOR REJECTION. REMOVE ALL BURRS AND SHARP EDGES				
FRAC. DIM. ± 1/64							
ANGULAR DIM. ±							

1	AM-109	GPT-40K	1-27-60
REQ. PER UNIT	MODEL	PROJECT NO.	ASS'Y. NO.
USED ON			

REQ. ITEM	PART NO.	DESCRIPTION	SYMBOL
STOCK SIZE		THE TECHNICAL MATERIEL CORP. MAMARONECK, NEW YORK	
MATERIAL		LETTERING, METER LIGHT CHASSIS, LEFT SIDE	
		417	J.C.B.
TYPE & TEMPER	HEAT TREAT. SPEC.	DRAWN	CHECKED
FINISH & SPEC. NO.		FINAL APPROVAL	
		LD-688 A	
		ELEC. DES. APP.	MECH. DES. APP.

LD-689 A



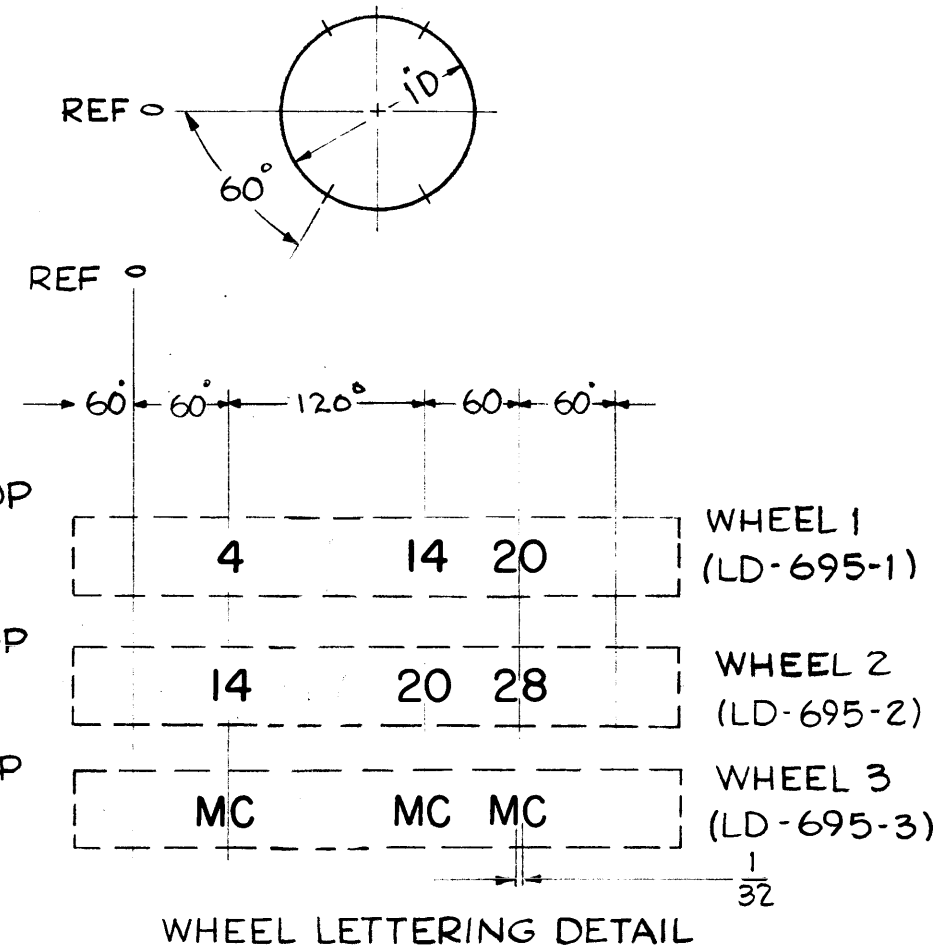
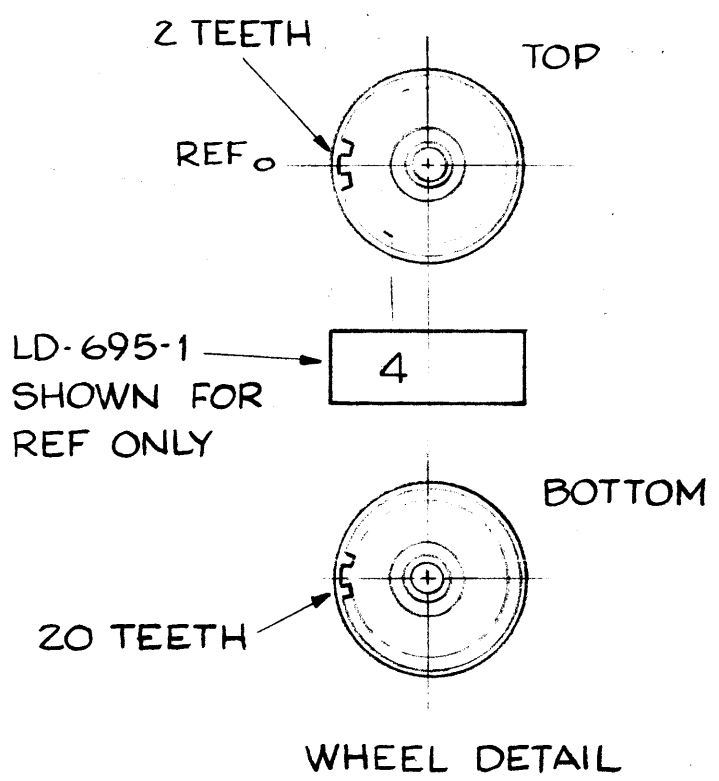
MARKING PROCESS: AS PER TMC SPEC S-727
 ALL LETTERING 1/8 HIGH BLACK GOTHIC.

REF-MS-1553 (4)

A	DIM. TO ALL LETTERS ADDED		8-3-65	14555	A.V.	<i>[Signature]</i>	<i>[Signature]</i>
ISSUE	ITEM	CHANGED FROM	DATE	CH. NO.	DRAFTS	CHECKER	ENG. APP.
TOLERANCES			SCALE:				
DEC. DIM. ±			MAXIMUM ALLOWABLE TOLERANCES HAVE BEEN DETERMINED AND ANY DEVIATIONS WILL BE CAUSE FOR REJECTION. REMOVE ALL BURRS AND SHARP EDGES				
FRAC. DIM. ± 1/64							
ANGULAR DIM. ±							

1	AM-109	GPT-40K	1-27-60
REQ. PER UNIT	MODEL	PROJECT NO.	ASS'Y. NO.
USED ON			

REQ. ITEM	PART NO.	DESCRIPTION	SYMBOL
STOCK SIZE		THE TECHNICAL MATERIEL CORP. MAMARONECK, NEW YORK	
MATERIAL		LETTERING, METER LIGHT CHASSIS, RIGHT SIDE	
TYPE & TEMPER	HEAT TREAT. SPEC.	DRAWN <i>[Signature]</i>	CHECKED <i>[Signature]</i>
FINISH & SPEC. NO.		FINAL APPROVAL <i>[Signature]</i>	
BLOC. DES. APP.		MECH. DES. APP.	
		LD-689 A	



NOTES ~
 1~ FIGURES ~ 18 POINT ALTERNATE BLACK GOTHIC NO. 2
 2~ BACKGROUND ~ WHITE
 3~ SPACING ~ DOUBLE FIGURES 1/32 APART, SINGLE FIGURES CENTERED.

NOTICE TO PERSONS RECEIVING THIS DRAWING
 THE TECHNICAL MATERIEL CORPORATION claims proprietary right in the material disclosed hereon. This drawing is issued in confidence for engineering information only and may not be reproduced or used to manufacture anything shown hereon without permission from THE TECHNICAL MATERIEL CORPORATION to the user. This drawing is loaned for mutual assistance and is subject to recall at any time.

Property of:
 THE TECHNICAL MATERIEL CORPORATION
 MAMARONECK, NEW YORK

FOR TMC USE ~
 USE BLANK WHEEL OF CY106 AFTER DISASSEMBLING AS PER STEPS 1 & 2 OF TMC DWG A-1825(4)

A	Lettering REVISED ON LD-695-1, 2, 3	4/6/60	2010	JR	JR	JB	
ISSUE ITEM	CHANGED FROM	DATE	CH. NO.	DRAFTS	CHECKER	ENG. APP.	
TOLERANCES		SCALE:					
DEC. DIM. ±		MAXIMUM ALLOWABLE TOLERANCES HAVE BEEN DETERMINED AND ANY DEVIATIONS WILL BE CAUSE FOR REJECTION. REMOVE ALL BURRS AND SHARP EDGES					
FRAC. DIM. ±							
ANGULAR DIM. ±							

1	GPT-40K	AT-101		2-4-60
REQ. PER UNIT	MODEL	PROJECT NO.	ASS'Y. NO.	DATE
USED ON				

REQ. ITEM	PART NO.	DESCRIPTION	SYMBOL
		THE TECHNICAL MATERIEL CORP. MAMARONECK, NEW YORK	
STOCK SIZE		LETTERING, WHEELS, AC 110	
MATERIAL		ASS'Y	
	J.C. Biele		JB
TYPE & TEMPER	HEAT TREAT. SPEC.	DRAWN	CHECKED
FINISH & SPEC. NO.		ELEC. DES. APP.	MECH. DES. APP.

LD-695 A