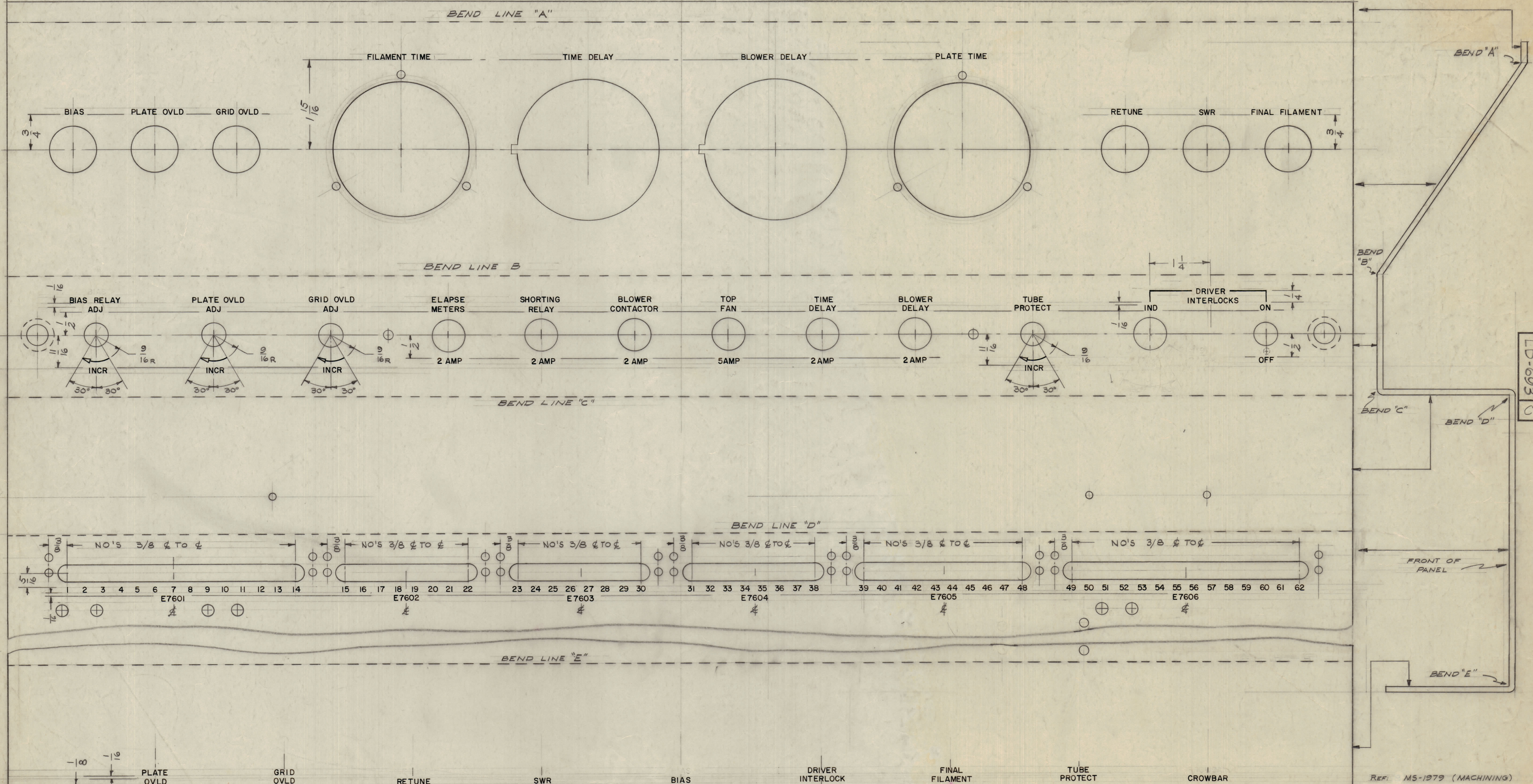


IF IT IS FOUND DESIRABLE TO CHANGE ANY TOLERANCE OR OTHER DETAIL SPECIFIED ON THIS DRAWING NOTIFY THE PURCHASER PROMPTLY.  
 MAXIMUM ALLOWABLE TOLERANCES HAVE BEEN DETERMINED AND DEVIATIONS WILL BE CAUSE FOR REJECTION. REMOVE ALL BURRS AND SHARP EDGES



C	ADD SHT 1 OF 2 TO #	96-72	20869	GE	ES	ES
B	ADDED (6) C HOLES	3-8-60	WJ	WJ	DB	
A	DRV INTLOCK MOVED	2/11/60	+	CP	WJ	DB
ISSUE	CHANGED FROM	DATE	CN. NO.	DRAFTER	CHECKER	ENG. APP.
TOLERANCES		SCALE:				
ALL OTHERS	DEC. DIM. ±	DRILL PUNCH COMMERCIAL STOCK				
	FRAC. DIM. ±	SIZES AND MANUFACTURERS				
	ANGULAR DIM. ±	TOLERANCES ARE NOT INCLUDED.				

ALL ENGRAVING TO BE WHITE FILLED  
 ALL LETTERS TO BE 1/8 HIGH GOTHIC  
 DEPTH OF STROKE      WIDTH OF STROKE  
 LETTERING              .010                      .020  
 LINEWORK              .010                      .015  
 ARROWHEADS          .010                      (APPROX. SIZE SHOWN)

FRONT VIEW SHOWN  
 NOTE: PANEL IS SHOWN IN A "FLATTENED VIEW"  
 TO CLEARLY SHOW ALL LETTERING.

1	AR-116	GPT-40K		21160
REQ PER UNIT	MODEL	PROJECT NO.	ASSY. NO.	DATE
	USED ON			

REQ. ITEM	PART NO.	DESCRIPTION	SYMBOL
		THE TECHNICAL MATERIEL CORP. MAMARONECK, NEW YORK	
		ENGRAVING, FRONT PANEL	
		AR-116 RELAY PANEL	
		10/11/60 DRAWN	
		16 ELEC. DES. APP.	
		DB MECH. DES. APP.	
		CHECKED	FINAL APPROVAL
		SHEET 1 OF 2	LD-693 C

LD-693 C

REF: MS-1979 (MACHINING)