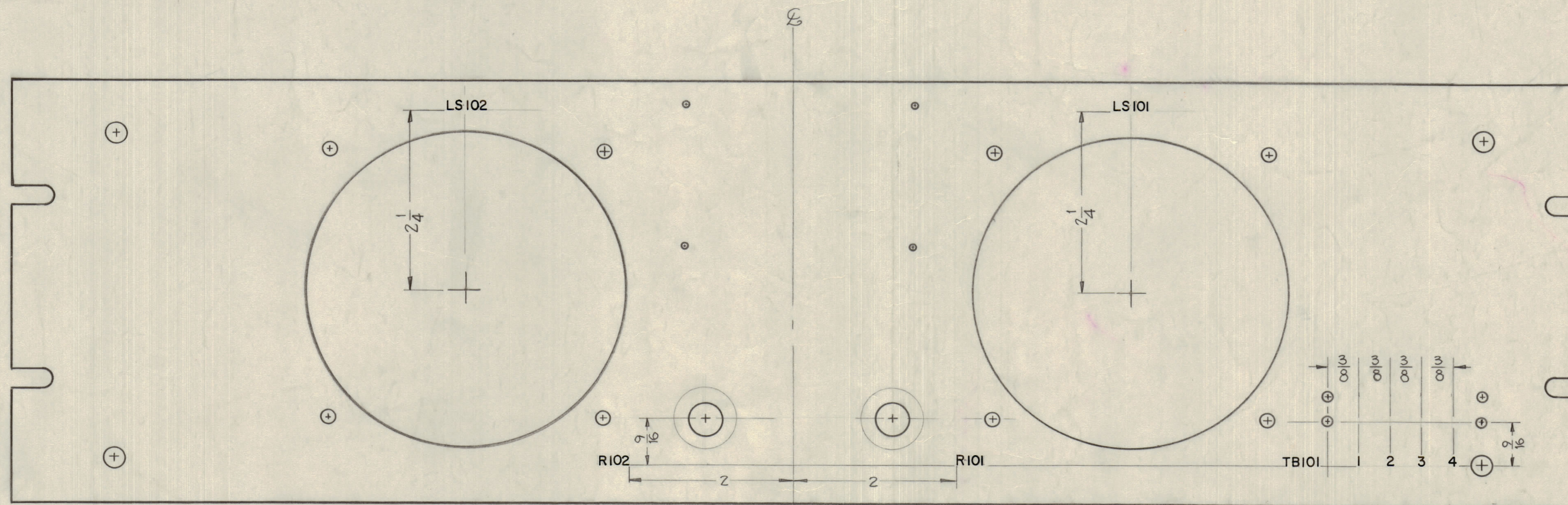


IF IT IS FOUND DESIRABLE TO CHANGE ANY TOLERANCE OR OTHER DETAIL SPECIFIED ON THIS DRAWING NOTIFY THE PURCHASER PROMPTLY.
 MAXIMUM ALLOWABLE TOLERANCES HAVE BEEN DETERMINED AND DEVIATIONS WILL BE CAUSE FOR REJECTION. REMOVE ALL BURRS AND SHARP EDGES

NOTICE TO PERSONS RECEIVING THIS DRAWING

THE TECHNICAL MATERIEL CORPORATION claims proprietary right in the material disclosed hereon. This drawing is issued in confidence for engineering information only and may not be reproduced or used to manufacture any thing shown hereon without permission from THE TECHNICAL MATERIEL CORPORATION to the user. This drawing is loaned for mutual assistance and is subject to recall at any time.

Property of:
 THE TECHNICAL MATERIEL CORPORATION
 MAMARONECK, NEW YORK



REAR VIEW SHOWN

MARKING PROCESS: AS PER TMC SPECIFICATION S-727
 ALL LETTERING 1/8 HIGH BLACK GOTHIC

LD-681
 A

REF MS-1963

6	LSP-11 ADDED TO MODEL CHART				
5	REVISION WAS R101				
4	QWS NO WAS LD-681	4-25-60	8880		
3	DELETED REF LD-681				
2	RI01, RI02 WERE R-101, R-102				
1	LS102, LS101 WERE LS-102, LS-101				

REV	CHANGED FROM	DATE	CN. NO.	DRAFTS	CHECKER	ENG. APP.
1						

TOLERANCES
 DEC. DIM. ±
 FRAC. DIM. ±
 ANGULAR DIM. ±

SCALE:
 DRILL PUNCH, COMMERCIAL STOCK
 SIZES AND MANUFACTURERS
 TOLERANCES ARE NOT INCLUDED.

1	LSP-11				
1	LSP-7			1-23-60	
REQ PER UNIT	MODEL	PROJECT NO.	ASSY. NO.	DATE	

REQ. ITEM	PART NO.	DESCRIPTION	SYMBOL
		THE TECHNICAL MATERIEL CORP. MAMARONECK, NEW YORK	
		LETTER, FRONT PANEL (REAR)	
		MATERIAL WEIGHT PER PC	
		TYPE & TEMPER	
		HEAT TREAT. SPEC.	
		FINISH & SPEC. NO.	

LD-681
 A
 SHEET 2 OF 2 SHEETS