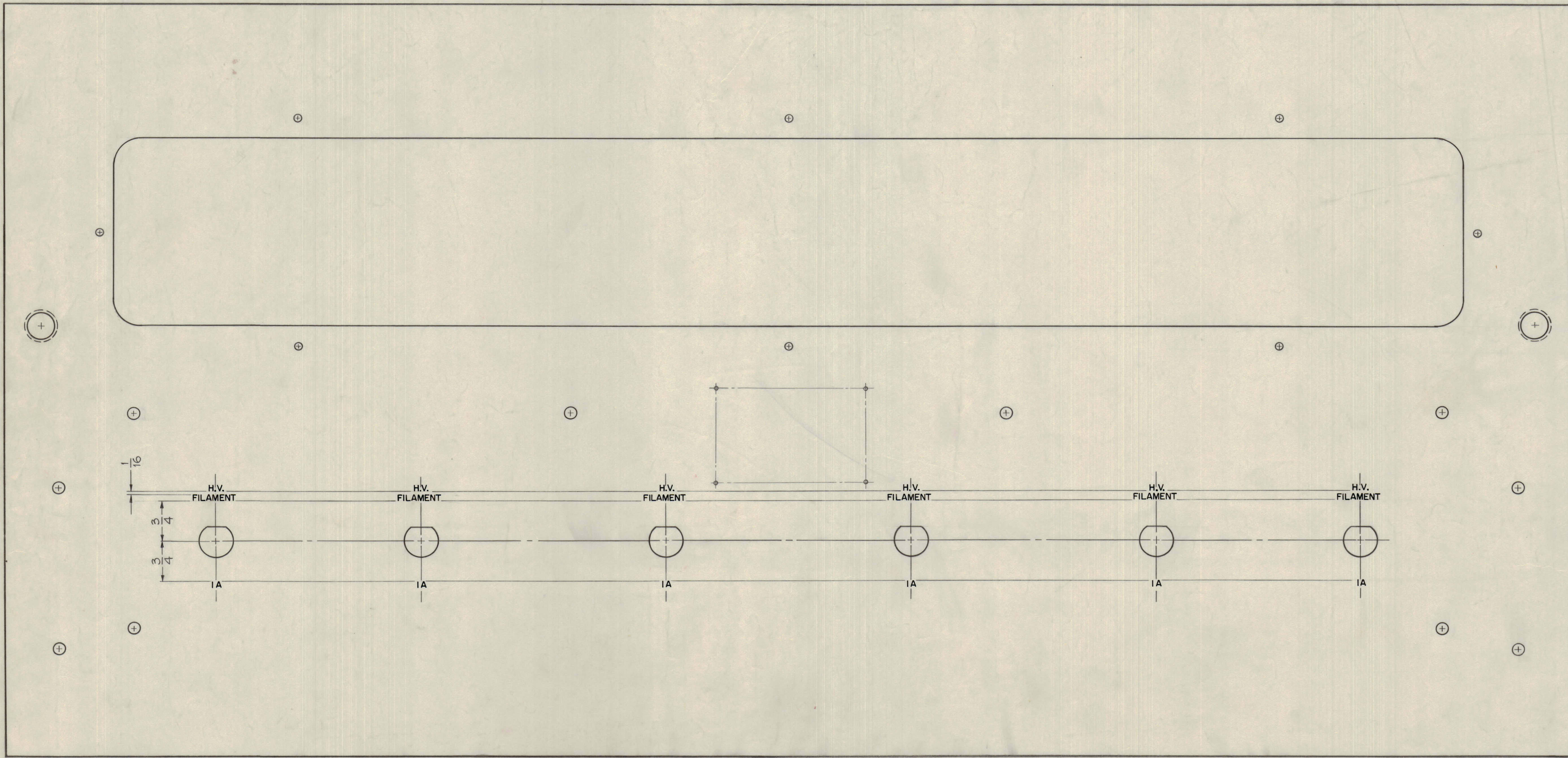


IF IT IS FOUND DESIRABLE TO CHANGE ANY TOLERANCE OR OTHER DETAIL SPECIFIED ON THIS DRAWING NOTIFY THE PURCHASER PROMPTLY.
 MAXIMUM ALLOWABLE TOLERANCES HAVE BEEN DETERMINED AND DEVIATIONS WILL BE CAUSE FOR REJECTION. REMOVE ALL BURRS AND SHARP EDGES

NOTICE TO PERSONS RECEIVING THIS DRAWING
 THE TECHNICAL MATERIEL CORPORATION claims property right in the material disclosed hereon. This drawing is issued in confidence for engineering information only and may not be reproduced or used to manufacture any electrical apparatus without the written permission of THE TECHNICAL MATERIEL CORPORATION. This drawing is issued for technical assistance and is subject to recall at any time.
 Property of:
 THE TECHNICAL MATERIEL CORPORATION
 MAMARONECK, NEW YORK

LD-662 B



FRONT VIEW OF PANEL

NOTES ~
 1~ ALL LETTER GROUPS TO BE CENTERED ON HOLES.
 2~ ENGRAVING TO BE GOTHIC, WHITE FILLED SIZES AS SHOWN BELOW

LETTER HEIGHT	DEPTH OF STROKE	WIDTH OF STROKE
1/8	.010	.020

REF ~ MS-1933 (PANEL, FRONT)

B	2	REF. NOTE LD663, DELE. MARKING WAS ENGRAVING ON TITLE BLOCK: SR. IOP2 ADD.	5.14.64	11392	WB	@	
A	1	(4) HOLES ADDED SEEMS-1933-0"	11.28.62	7740			
ISSUE	ITEM	CHANGED FROM	DATE	CN. NO.	DRAFTS	CHECKER	ENG. APP.
TOLERANCES		SCALE:					
ALL OTHERS	DEC. DIM. ±	DRILL, PUNCH, COMMERCIAL STOCK SIZES AND MANUFACTURERS TOLERANCES ARE NOT INCLUDED.					
	FRAC. DIM. ±						
	ANGULAR DIM. ±						

REQ. PER UNIT	MODEL	PROJECT NO.	ASSY. NO.	DATE
	AP-105	GPT-40K		1-9-60
USED ON				

REQ. ITEM	PART NO.	DESCRIPTION	SYMBOL
THE TECHNICAL MATERIEL CORP. MAMARONECK, NEW YORK			
MARKING, FRONT PANEL			
MARKING METHOD, ENGRAVING (HIGH VOLTAGE RECTIFIER)			
John C. Biele		DR	R27
DRAWN		ELEC. DES. APP.	MECH. DES. APP.
CHECKED		FINAL APPROVAL	
Sheet 1 of 2		LD-662 B	