

IF IT IS FOUND DESIRABLE TO CHANGE ANY TOLERANCE OR OTHER DETAIL SPECIFIED ON THIS DRAWING NOTIFY THE PURCHASER PROMPTLY.

MAXIMUM ALLOWABLE TOLERANCES HAVE BEEN DETERMINED AND DEVIATIONS WILL BE CAUSE FOR REJECTION. REMOVE ALL BURRS AND SHARP EDGES.

NOTES:

- 1-ALL LETTERS TO BE 3/32 HIGH, UNLESS OTHERWISE SPECIFIED
- 2-ALL ENGRAVING TO BE WHITE FILLED GOTHIC
- 3-ALL LINES TO BE WHITE FILLED

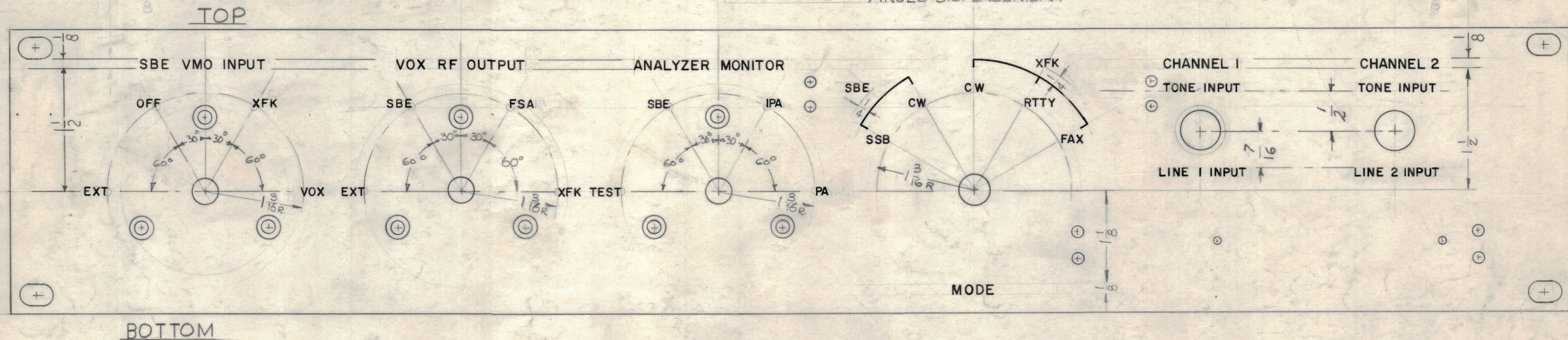
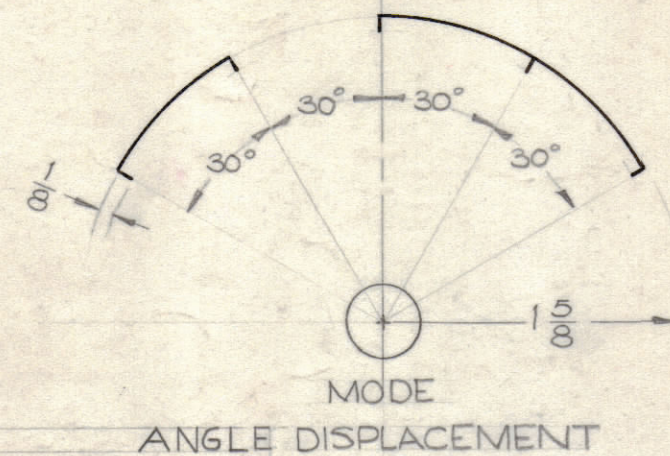
LETTER HEIGHT	DEPTH OF STROKE	WIDTH OF STROKE
3/32	.010	.015
1/8	.010	.020
SOLID LINES	.010	.015

NOTICE TO PERSONS RECEIVING THIS DRAWING

THE TECHNICAL MATERIEL CORPORATION claims proprietary right in the material disclosed herein. This drawing is issued in confidence for engineering information only and may not be reproduced or used to manufacture anything shown hereon without permission from THE TECHNICAL MATERIEL CORPORATION to the user. This drawing is loaned for mutual assistance and is subject to recall at any time.

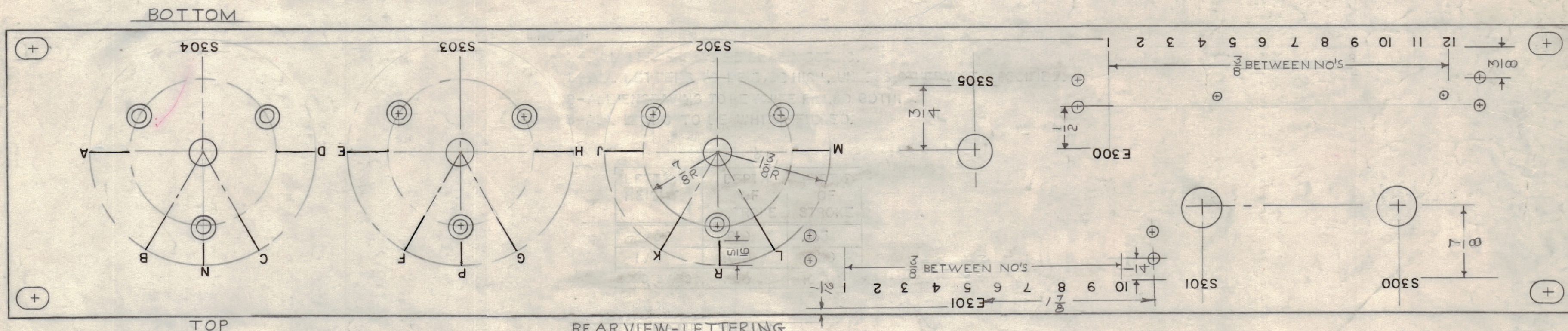
Property of:

THE TECHNICAL MATERIEL CORPORATION
MAMARONECK, NEW YORK



FRONT VIEW-ENGRAVING

LD-629 A



REAR VIEW-LETTERING

NOTE: FOR S303 & S304 THE ANGLE DISPLACEMENT IS THE SAME AS S302

REAR OF PANEL NOT TO BE ENGRAVED
LETTERING-1/8 HIGH GOTHIC

MARKING PROCESS: AS PER TMC SPECIFICATION S-727.

REF- LD-629 - SET REAR PANEL
REF- MS-1902 - FRONT PANEL

REQ. ITEM	PART NO.	DESCRIPTION	SYMBOL
		THE TECHNICAL MATERIEL CORP. MAMARONECK, NEW YORK	
		ENGRAVING & LETTERING	
		FRONT PANEL	
		DRAWN	ELEC. DES. APP. MECH. DES. APP.
		CHECKED	FINAL APPROVAL
			LD-629 A

ISSUE	ITEM	CHANGED FROM	DATE	CH. NO.	DRAFTS	CHECKER	ENG. APP.
A		REAR VIEW ADDED	9/8/61	5536	E.H.	DB	LS

REQ. PER UNIT	MODEL	PROJECT NO.	ASSY. NO.	DATE
1	MCP-2			10-15-59