

IF IT IS FOUND DESIRABLE TO CHANGE ANY TOLERANCE OR OTHER DETAIL SPECIFIED ON THIS DRAWING NOTIFY THE PURCHASER PROMPTLY.

MAXIMUM ALLOWABLE TOLERANCES HAVE BEEN DETERMINED AND DEVIATIONS WILL BE CAUSE FOR REJECTION. REMOVE ALL BURRS AND SHARP EDGES

NOTICE TO PERSONS RECEIVING THIS DRAWING

THE TECHNICAL MATERIEL CORPORATION claims proprietary right in the material disclosed hereon. This drawing is issued in confidence for engineering information only and may not be reproduced or used to manufacture anything shown hereon without permission from THE TECHNICAL MATERIEL CORPORATION to the user. This drawing is loaned for mutual assistance and is subject to recall at any time.

Property of:

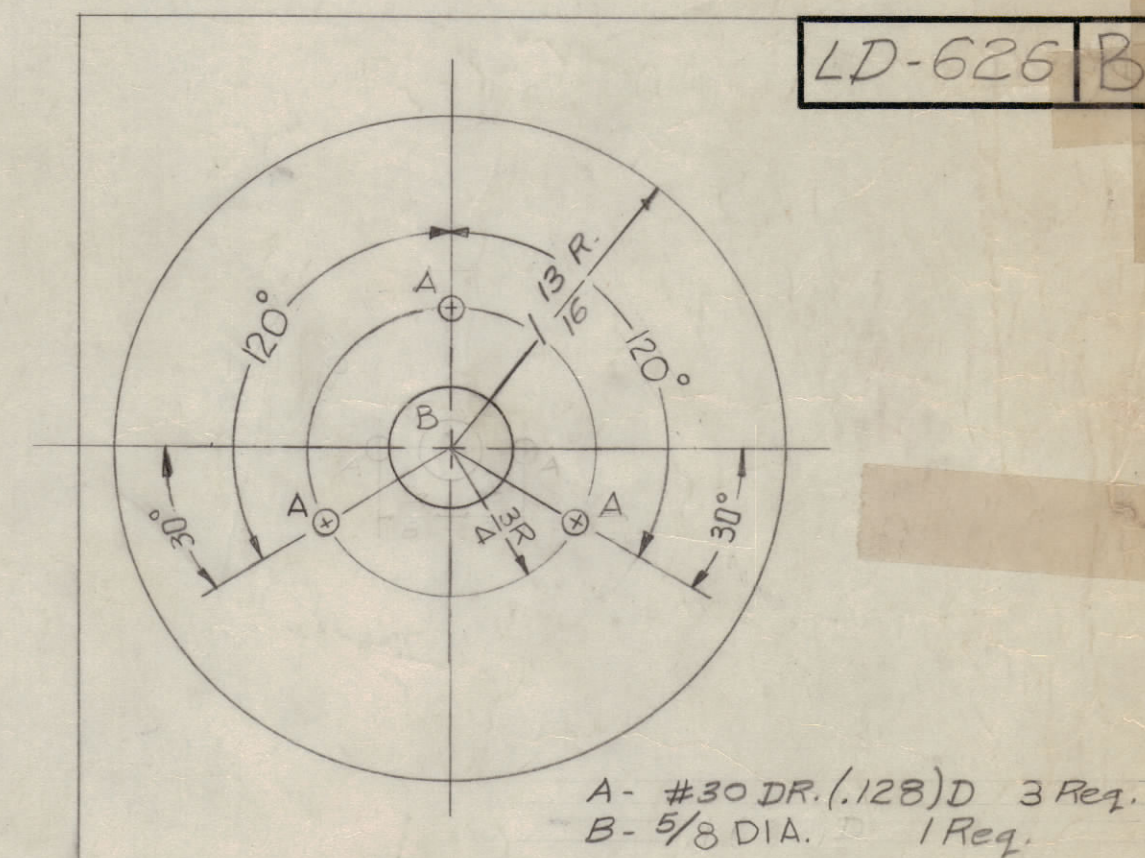
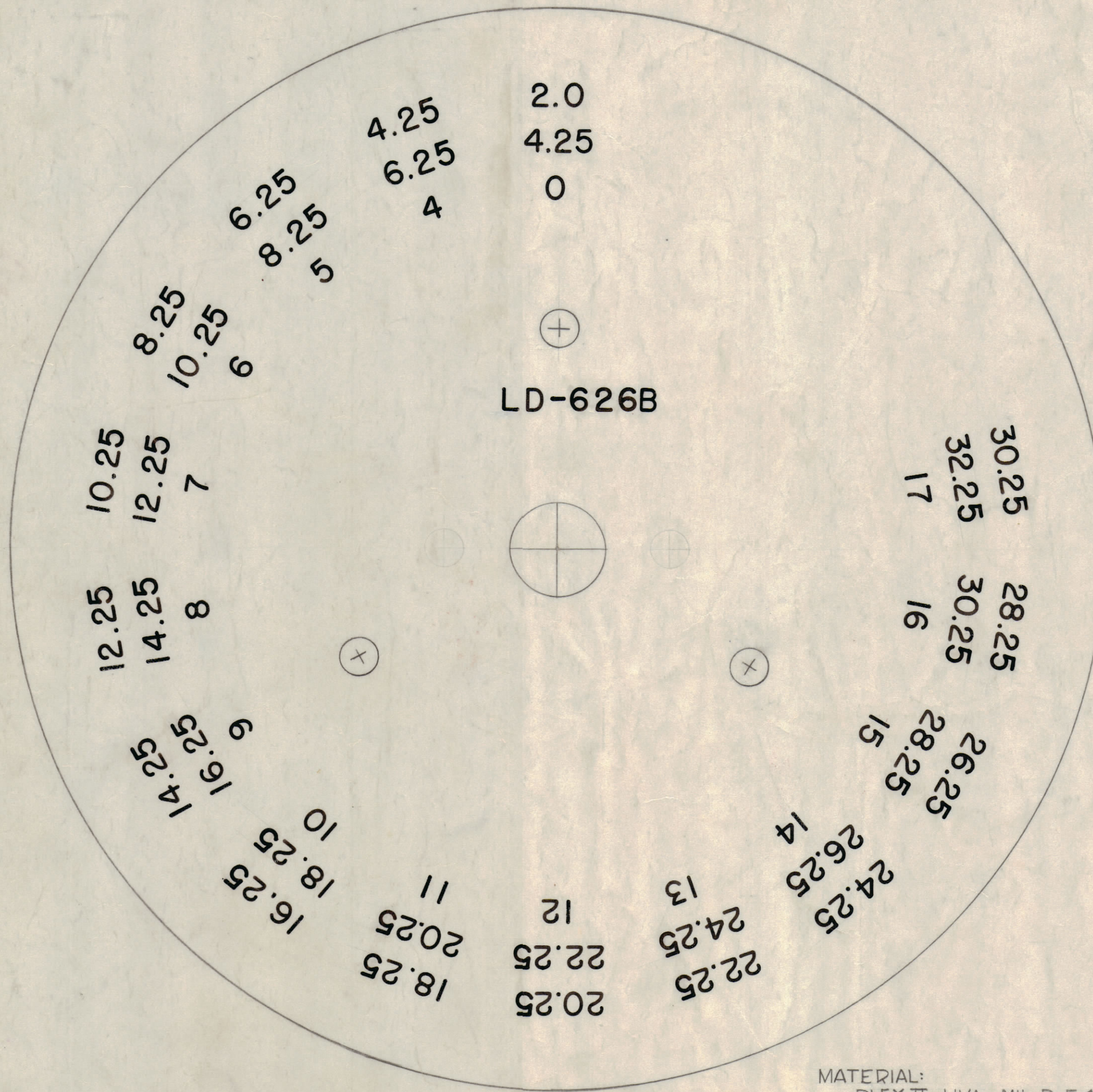
THE TECHNICAL MATERIEL CORPORATION
MAMARONECK, NEW YORK

SPECIAL NOTES-

Drawing Scale 3 times Normal Size ($3\frac{5}{8}$ " D).
Reduction must be done accurately and w/o distortion.

Dial Calibration Circles Must be concentric to dial blank center. Outermost circle must be kept within .005"

Dial Machining to be made from Detail Below.



MACHINING

MATERIAL:
PLEX II UVA MIL-D-5425
PRINT:
BLACK NO'S. ON WHITE BACKGROUND

B	2	MATERIAL WAS VINYL	3-5-62	6472	EE	EE	EE
	1	(B) WAS 5/16 DIA. REVISION LETTER CLARIFIED					
	3	MATERIAL & PRINT NOTES ADDED					
A	2	2 (A) HOLES RELOCATED ON 3/4 R	1-10-62	6168	EE	EE	EE
	1	(A) HOLE ADDED					
ISSUE	ITEM	CHANGED FROM	DATE	CN. NO.	DRAFTS	CHECKER	ENG. APP.
		TOLERANCES	SCALE: 3X	#240(3)			
ALL OTHERS	DEC. DIM. ± FRAC. DIM. ± ANGULAR DIM. ±	DRILL, PUNCH, COMMERCIAL STOCK SIZES AND MANUFACTURERS TOLERANCES ARE NOT INCLUDED.					

1	SBE-3	AO-101	A-1809	8-22-57
REQ. PER UNIT	MODEL	PROJECT NO.	ASS'Y. NO.	DATE
USED ON				

REQ. ITEM	PART NO.	DESCRIPTION	SYMBOL
	.064 THK.	THE TECHNICAL MATERIEL CORP.	
	STOCK SIZE	MAMARONECK, NEW YORK	
SEE NOTE		LETTERING, HF XTAL DIAL	
MATERIAL	WEIGHT PER PC.	(SBE-3)	
SEE NOTE			
TYPE & TEMPER	16/10/59	RWB	
HEAT TREAT. SPEC.	White Translucent		
FINISH & SPEC. NO.			

LD-626 B