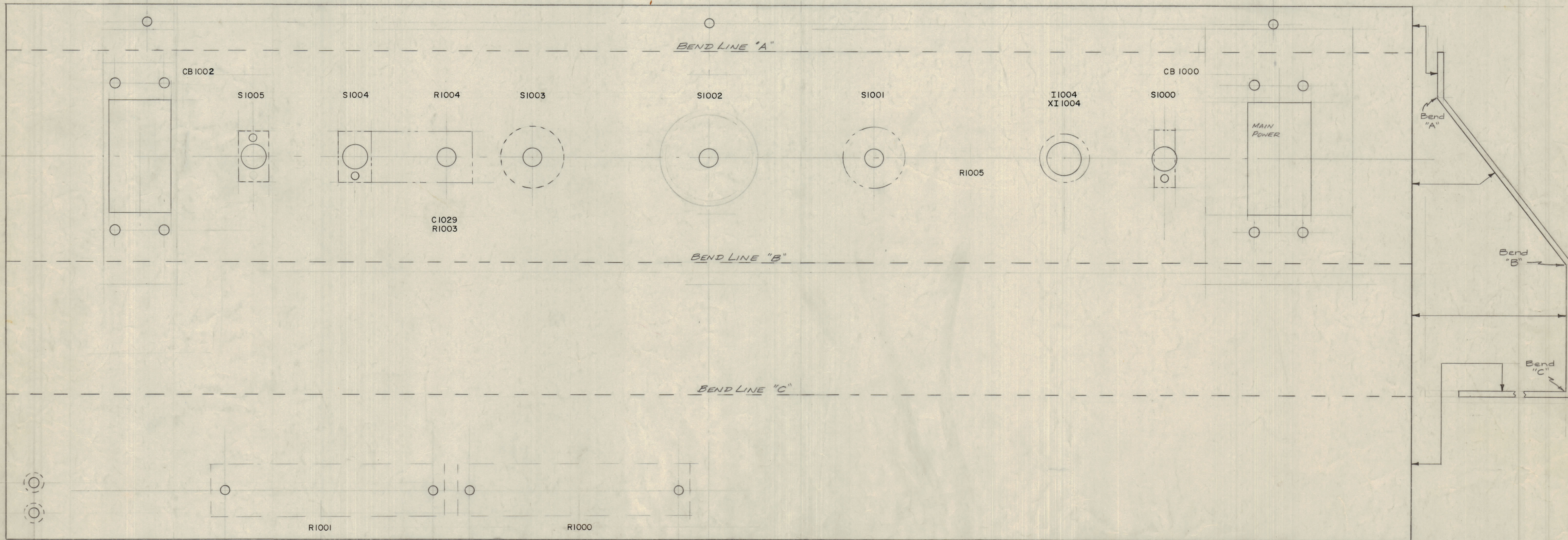


IF IT IS FOUND DESIRABLE TO CHANGE ANY TOLERANCE OR OTHER DETAIL SPECIFIED ON THIS DRAWING NOTIFY THE PURCHASER PROMPTLY.  
 MAXIMUM ALLOWABLE TOLERANCES HAVE BEEN DETERMINED AND DEVIATIONS WILL BE CAUSE FOR REJECTION. REMOVE ALL BURRS AND SHARP EDGES.

NOTICE TO PERSONS RECEIVING THIS DRAWING

THE TECHNICAL MATERIEL CORPORATION claims proprietary right in the material disclosed hereon. This drawing is issued in confidence for engineering information only and may not be reproduced or used to manufacture any thing shown hereon without permission from THE TECHNICAL MATERIEL CORPORATION to the user. This drawing is loaned for mutual assistance and is subject to recall at any time.

Property of:  
 THE TECHNICAL MATERIEL CORPORATION  
 MAMARONECK, NEW YORK



REAR VIEW OF PANEL

NOTE: PANEL IS SHOWN IN A 'FLATTENED' VIEW TO CLEARLY SHOW ALL LETTERING.

MARKING PROCESS: AS PER THE SPEC 3-727  
 ALL LETTERING 1/8 HIGH BLACK GOTHIC.

LD-499 (ENGR., FRONT)  
 REF. MS-1485 (ROLL)

REQ. ITEM	PART NO.	DESCRIPTION	SYMBOL
THE TECHNICAL MATERIEL CORP. MAMARONECK, NEW YORK			
STOCK SIZE			
LETTERING, MAIN CONTROL PANEL			
MATERIAL WEIGHT PER PC.			
REAR AX-113			
TYPE & TEMPER			
DRAWN		ELEC. DES. APP.	MECH. DES. APP.

ISSUE	ITEM	CHANGED FROM	DATE	CN. NO.	DRAFTS	CHECKER	ENG. APP.
1	1	CB1002 symbol was CB1001 R1001 symbol DELETED	11-10-4	5858	GDL	[Signature]	[Signature]