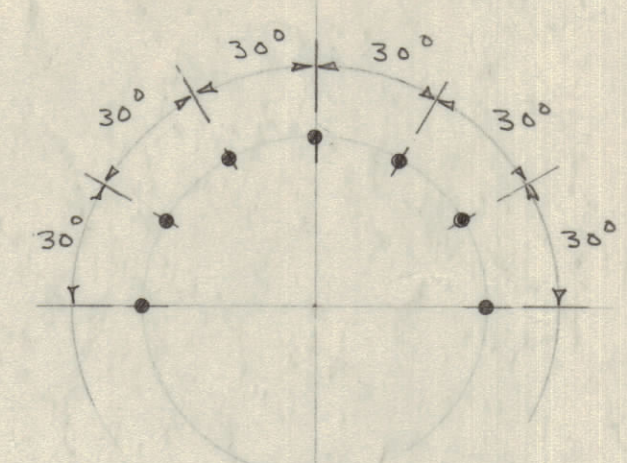
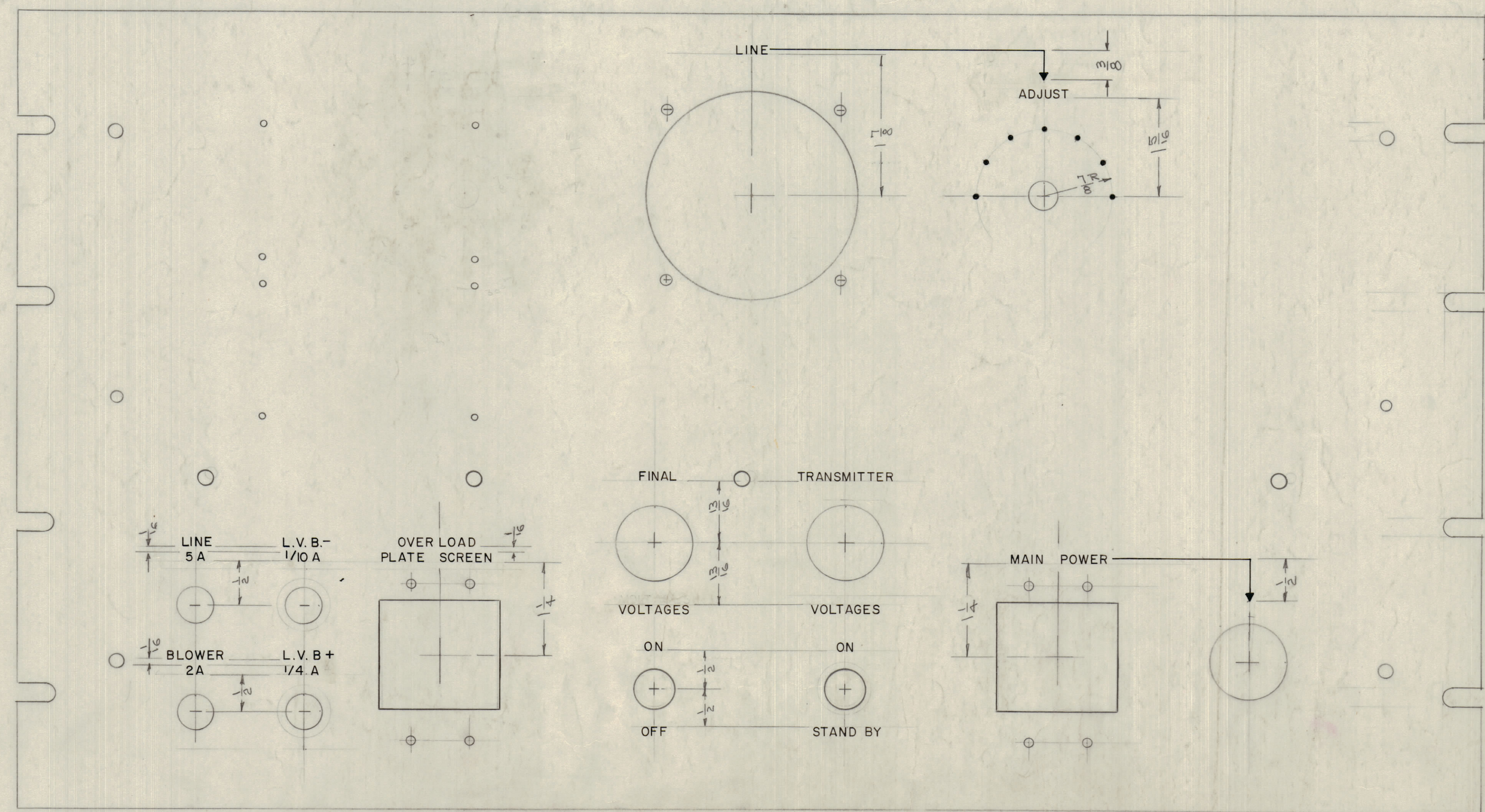


IF IT IS FOUND DESIRABLE TO CHANGE ANY TOLERANCE OR OTHER DETAIL SPECIFIED ON THIS DRAWING NOTIFY THE PURCHASER PROMPTLY.
 MAXIMUM ALLOWABLE TOLERANCES HAVE BEEN DETERMINED AND DEVIATIONS WILL BE CAUSE FOR REJECTION. REMOVE ALL BURRS AND SHARP EDGES

NOTICE TO PERSONS RECEIVING THIS DRAWING
 THE TECHNICAL MATERIEL CORPORATION claims proprietary right in the material disclosed herein. This drawing is issued in confidence for engineering information only and may not be reproduced or used to manufacture anything shown herein without permission from THE TECHNICAL MATERIEL CORPORATION to the user. This drawing is loaned for mutual assistance and is subject to recall at any time.
 Property of:
 THE TECHNICAL MATERIEL CORPORATION
 MAMARONECK, NEW YORK



LINE ADJUST
 ANGLE DISPLACEMENT



NOTE
 ALL DOTS TO BE 1/16 DIA. WHITE FILLED.
 ALL LETTERING 1/8 HIGH GOTHIC, WHITE FILLED.
 ALL ARROWHEADS TO BE 1/8 x 1/8 TRIANGLE, WHITE FILLED.
 ALL LINES WHITE FILLED.

LETTER HEIGHT	DEPTH OF STROKE	WIDTH OF STROKE
1/8	.010	.020
DOTS	.010	—
ARROWHEADS	.010	—
SOLID LINES	.010	.015

5	Arrow added	6/16/59	J. C. B.		
4	Line from line Adj deleted				
3	Filament Adj. deleted				
2	Blower 2A was Blower 1A				
1	Line 5A was Line 3A				

REQ. ITEM	PART NO.	DESCRIPTION	SYMBOL
THE TECHNICAL MATERIEL CORP. MAMARONECK, NEW YORK			
ENGRAVING, FRONT PANEL			
PS-4/PAL-1K			
DRAWN		ELEC. DES. APP.	
CHECKED		MECH. DES. APP.	
HEAT TREAT. SPEC.		FINAL APPROVAL	
FINISH & SPEC. NO.		LD-519 A	

1	PS-4	PAL-1K		
REQ PER UNIT	MODEL	PROJECT NO.	ASSY. NO.	DATE
USED ON				

LD 519 A