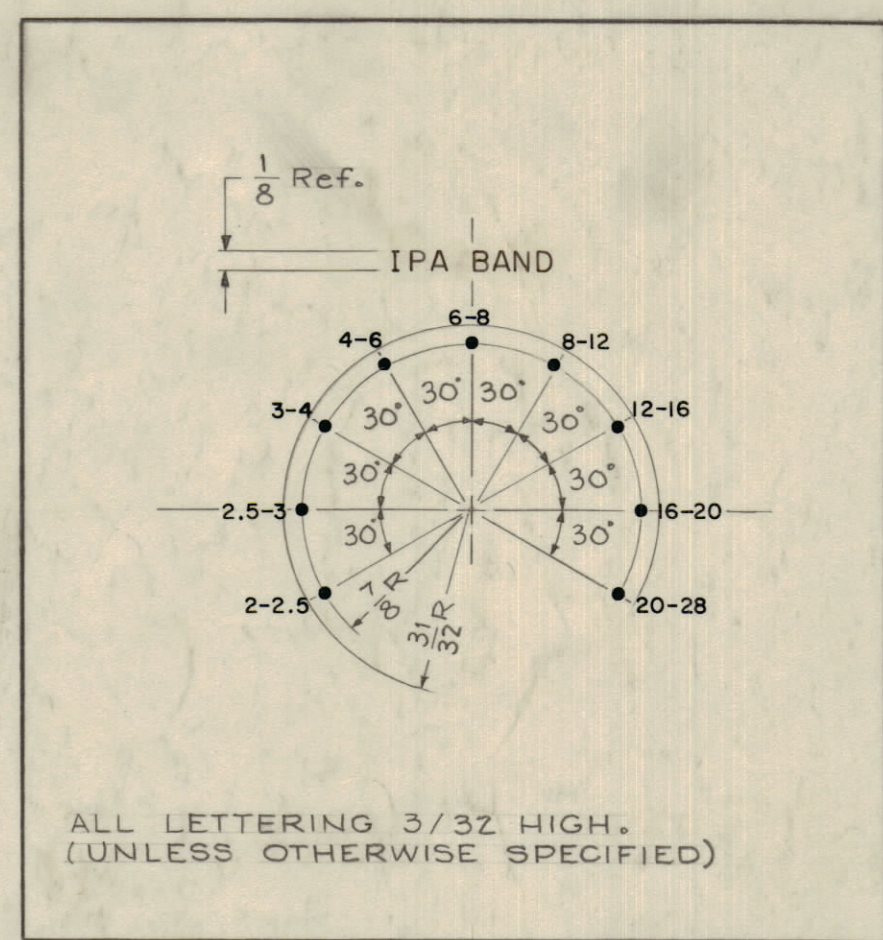
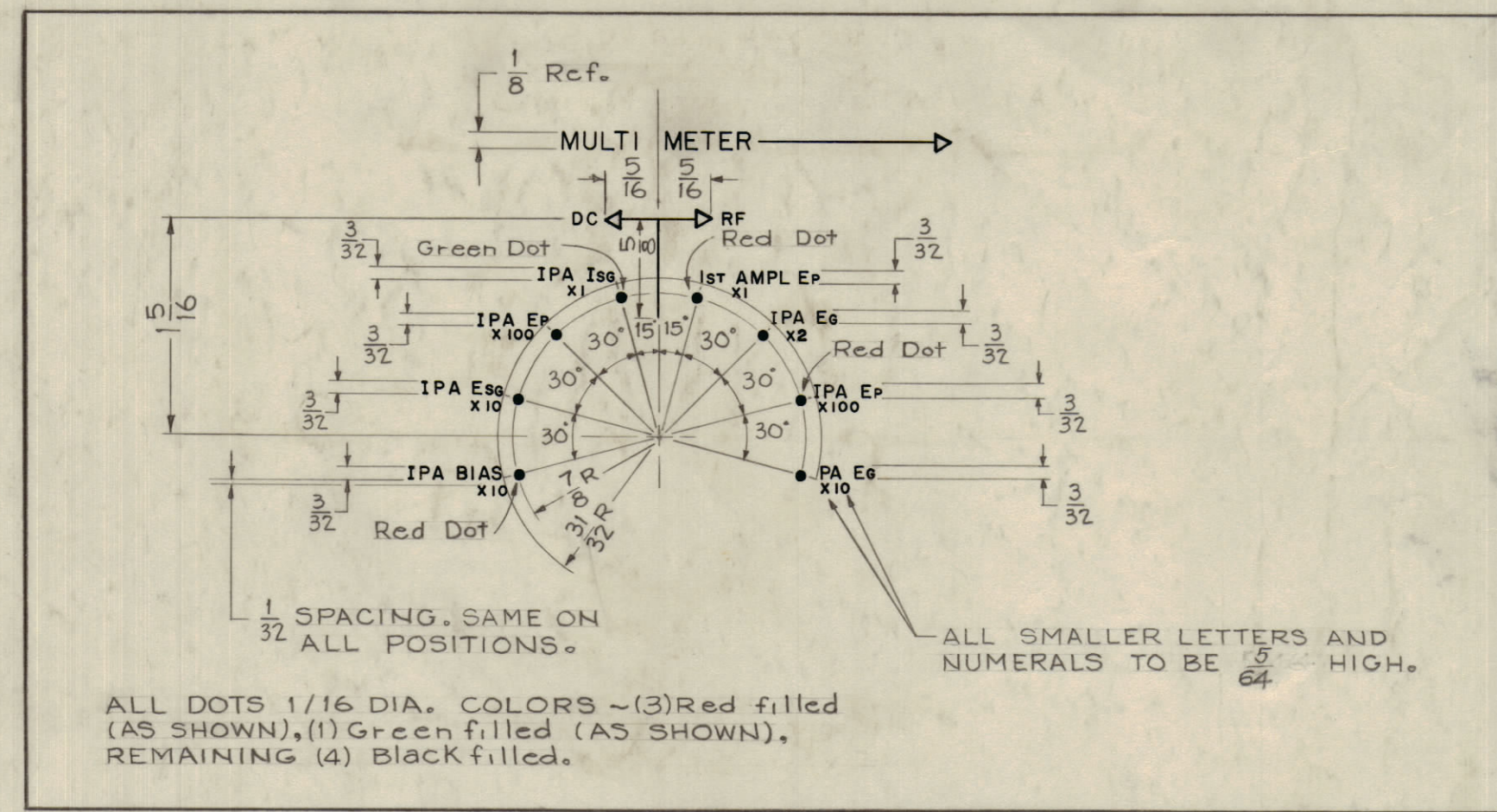


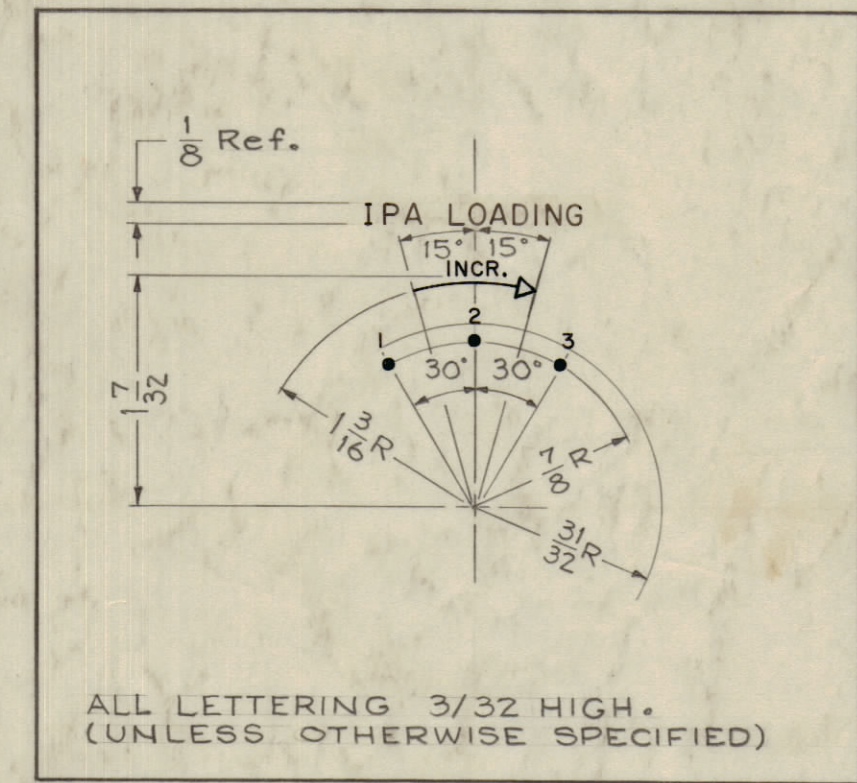
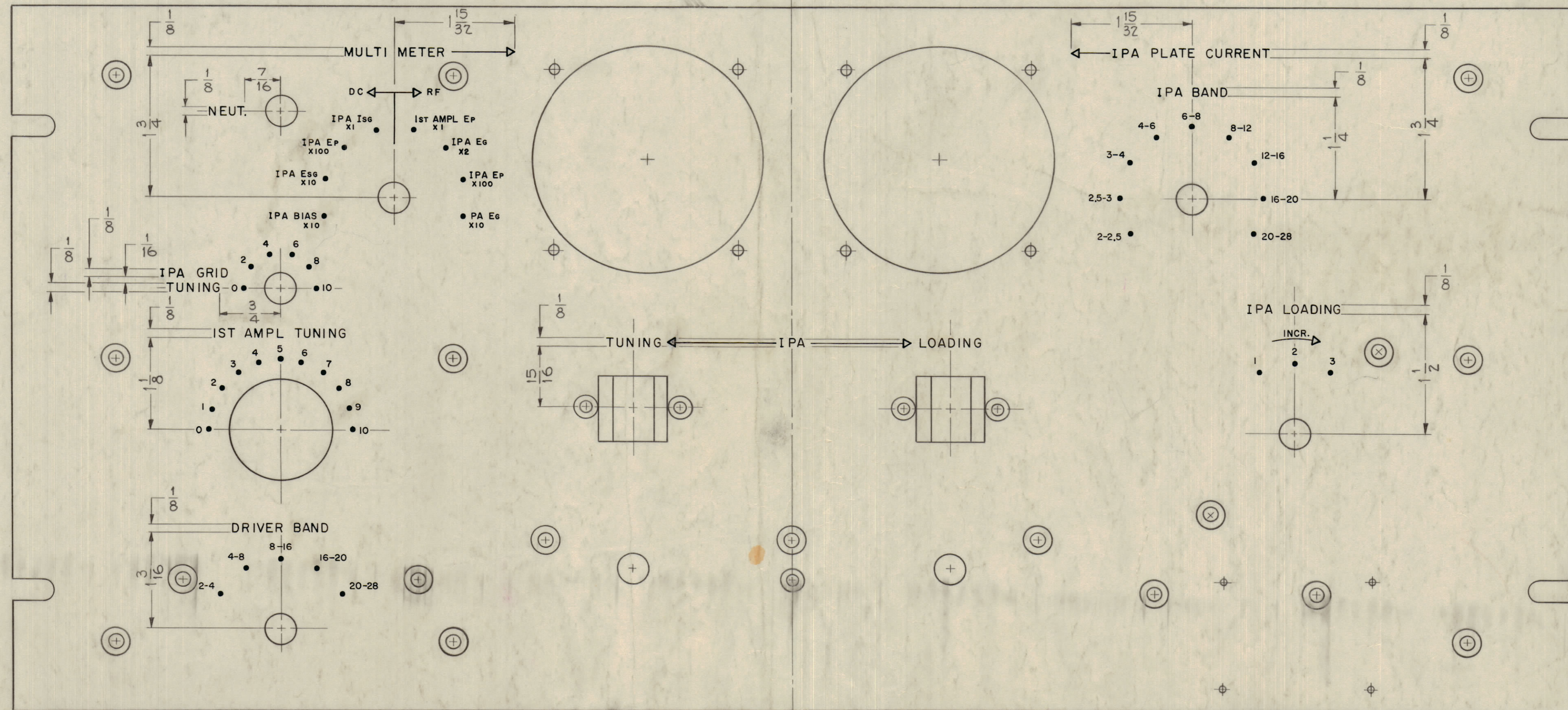
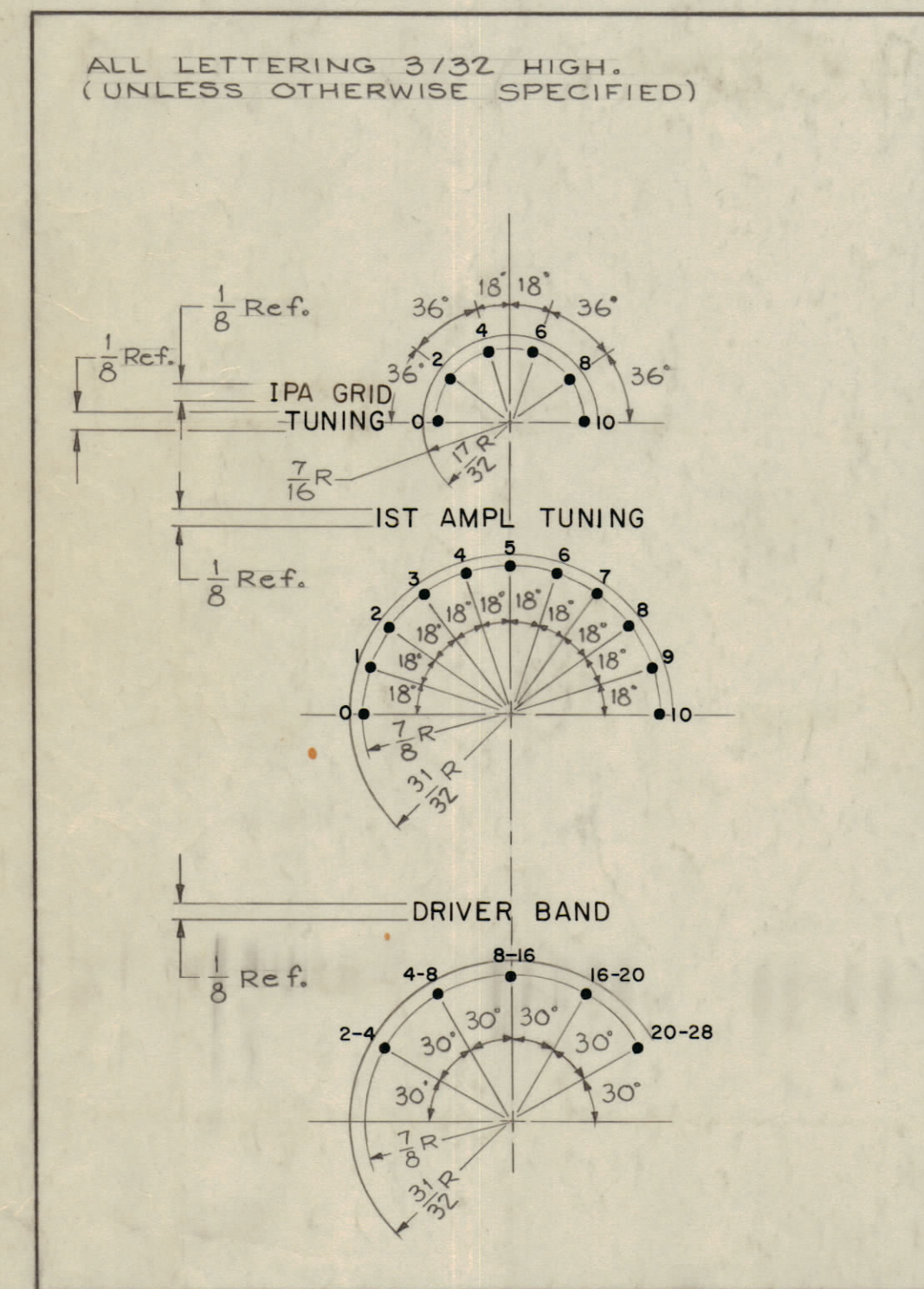
IF IT IS FOUND DESIRABLE TO CHANGE ANY TOLERANCE OR OTHER DETAIL SPECIFIED ON THIS DRAWING NOTIFY THE PURCHASER PROMPTLY.
 MAXIMUM ALLOWABLE TOLERANCES HAVE BEEN DETERMINED AND DEVIATIONS WILL BE CAUSE FOR REJECTION. REMOVE ALL BURRS AND SHARP EDGES



NOTICE TO PERSONS RECEIVING THIS DRAWING

THE TECHNICAL MATERIEL CORPORATION claims proprietary right in the material disclosed herein. This drawing is issued in confidence for engineering information only and may not be reproduced or used to manufacture any kind shown herein without permission from THE TECHNICAL MATERIEL CORPORATION. If the user of this drawing is loaned for mutual assistance and is subject to recall at any time.

Property of:
 THE TECHNICAL MATERIEL CORPORATION
 MAMARONECK, NEW YORK



NOTES -
 1~ ALL DOTS TO BE 1/16 DIA., WHITE FILLED, UNLESS OTHERWISE SPECIFIED.
 2~ ALL LETTERING TO BE WHITE FILLED.
 3~ ALL ARROWHEADS TO BE 1/8 X 1/8 X 1/8 TRIANGLE, WHITE OUTLINED. →
 4~ ALL LINES TO BE WHITE FILLED.

LETTER HEIGHT	DEPTH OF STROKE	WIDTH OF STROKE
5/64	.010-.012	.012-.015
3/32	.010	.015
1/8	.010	.020
DOTS	.010	—
ARROWHEADS	.010	—
SOLID LINES	.010	.015

ISSUE ITEM	CHANGED FROM	DATE	CN. NO. DRAFTS	CHECKER	ENG. APP.
C 1	LETTERING WAS 1/8 HIGH ON MULTI METER DETAIL	4/22/59	11284	AM	@ QP
B 2	ON MULTI METER DETAIL (IPA Ep) WAS (IPA Is)	5-28-59	6823	V.R.R.	J.W.
A 1	SEE SHEET	12-8-51	6043	AB	J.P.

TOLERANCES		SCALE:
ALL DEC. DIM. ±	FRAC. DIM. ±	DRILL PUNCH, COMMERCIAL STOCK SIZES AND MANUFACTURERS' TOLERANCES ARE NOT INCLUDED.
OTHERS	ANGULAR DIM. ±	

REF - TMC DWG NO. MS-1426 (8)

REQ. ITEM	PART NO.	DESCRIPTION	SYMBOL
		THE TECHNICAL MATERIEL CORP. MAMARONECK, NEW YORK	
		ENGRAVING, FRONT PANEL	
		RFC-1	
		JOHN C. BIELE	
		DRAWN	
		ELEC. DES. APP.	
		MECH. DES. APP.	
		CHECKED	
		HEAT TREAT. SPEC.	
		FINISH & SPEC. NO.	

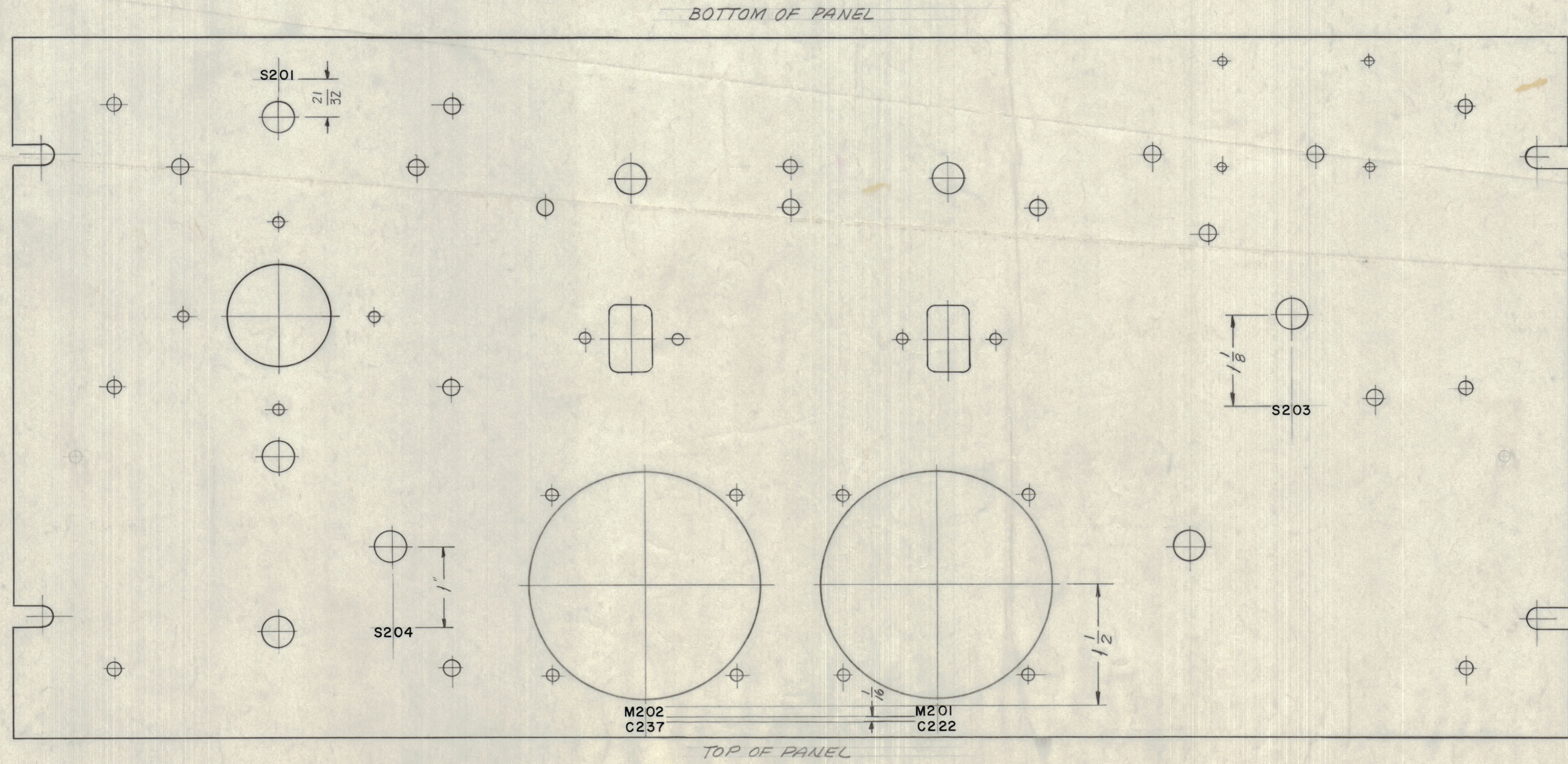
REQ. PER UNIT	MODEL	PROJECT NO.	ABBY. NO.	DATE
1	RFC-1	P/O GPT-10K		3-6-59
		USED ON		

LD-518 C
 SHEET 1 OF 2

NOTICE TO PERSONS RECEIVING THIS DRAWING

THE TECHNICAL MATERIEL CORPORATION claims proprietary right in the material disclosed hereon. This drawing is issued in confidence for engineering information only and may not be reproduced or used to manufacture anything shown hereon without permission from THE TECHNICAL MATERIEL CORPORATION to the user. This drawing is loaned for mutual assistance and is subject to recall at any time.

Property of:
THE TECHNICAL MATERIEL CORPORATION
MAMARONECK, NEW YORK



MARKING PROCESS: AS PER TMC SPEC. S-727
LETTERING TO BE 1/8 HIGH BLACK, GOTHIC

LD-518 C



REF.: MS-1426 (8)

SYM	ZONE	DESCRIPTION	DATE	CH. NO.	DRAFTS	CHECKER	ENG. APP.
C	1	SEE SHEET 1	4-22-64	11284	A.M.		
B	-	SEE SHEET 1	6-28-61	6873	V.R.R.		
A	-	SHEET 2 ADDED	12-8-61	6873	2A		

UNLESS OTHERWISE SPECIFIED:
DIMENSIONS ARE IN INCHES
TOLERANCES ON FRACTIONS ± 1/64 DECIMALS ± .005 ANGLES ± 1/2°

MAXIMUM ALLOWABLE TOLERANCES HAVE BEEN DETERMINED AND ANY DEVIATIONS WILL BE CAUSE FOR REJECTION. REMOVE ALL BURRS & SHARP EDGES

REQ. PER UNIT	MODEL	SECTION	ASS'Y. NO.	DATE
1	RFC-1			12-8-61

USED ON

REQ. ITEM	PART NO.	DESCRIPTION	SYMBOL
		THE TECHNICAL MATERIEL CORP. MAMARONECK, NEW YORK	
		LETTERING, FRONT PANEL, REAR	
		MATERIAL	
		TYPE & TEMPER	
		HEAT TREAT. SPEC.	
		FINISH & SPEC. NO.	

DRAWN: RB, RUZZO, SFM
CHECKED: RK
FINAL APPROVAL: LD-518 C
ELEC. DES. APP. MECH. DES. APP. SHEET 2 OF 2